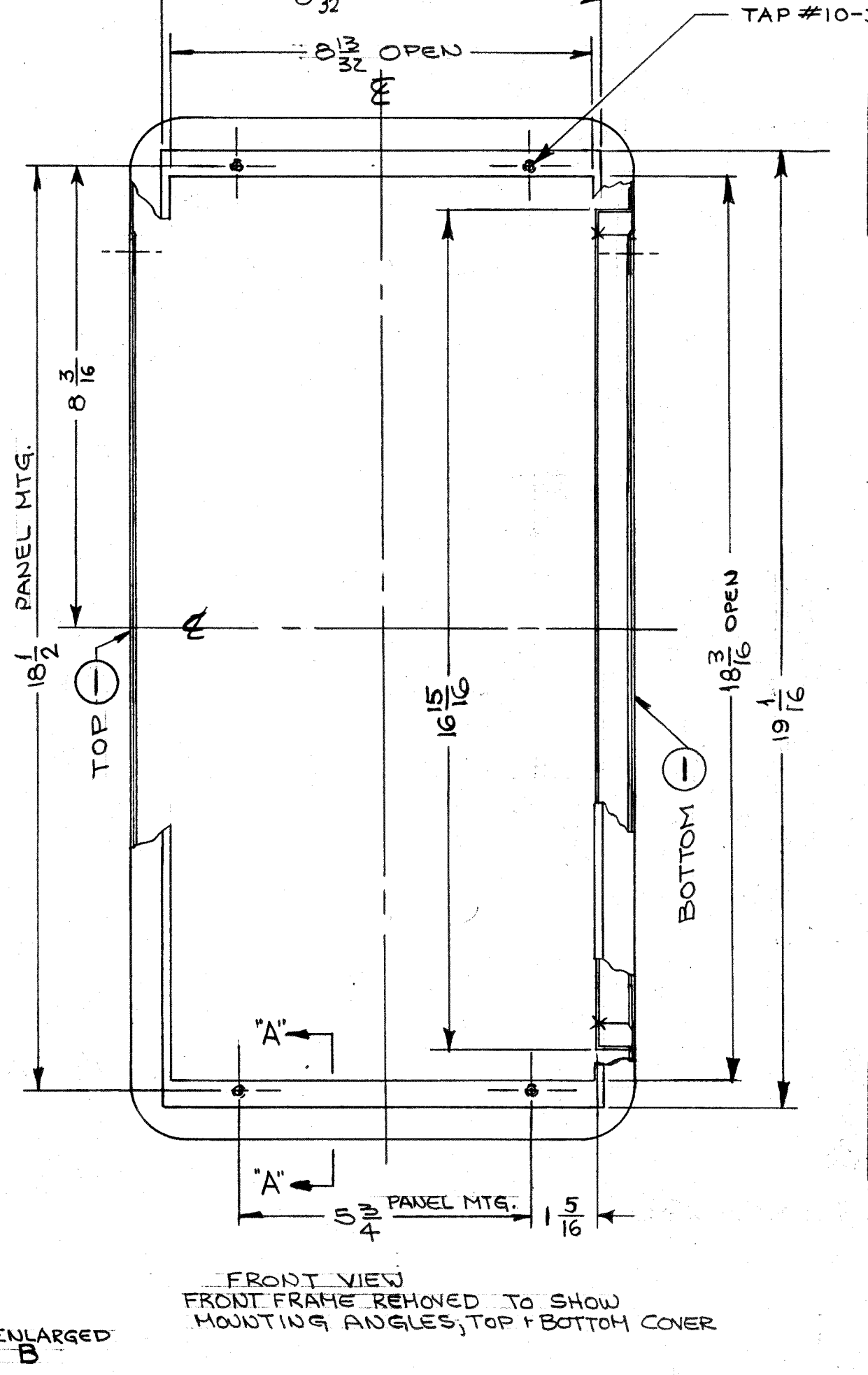
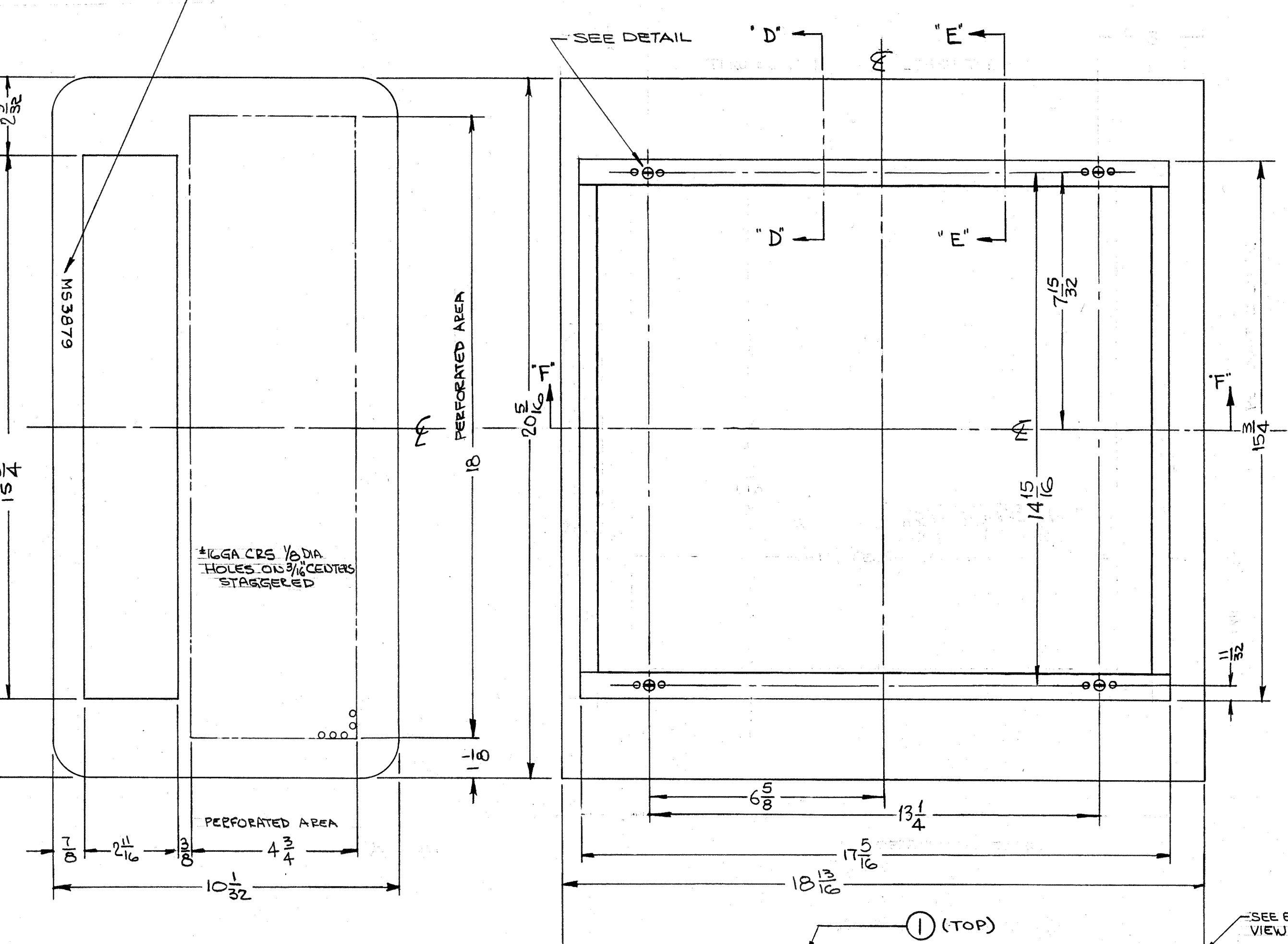
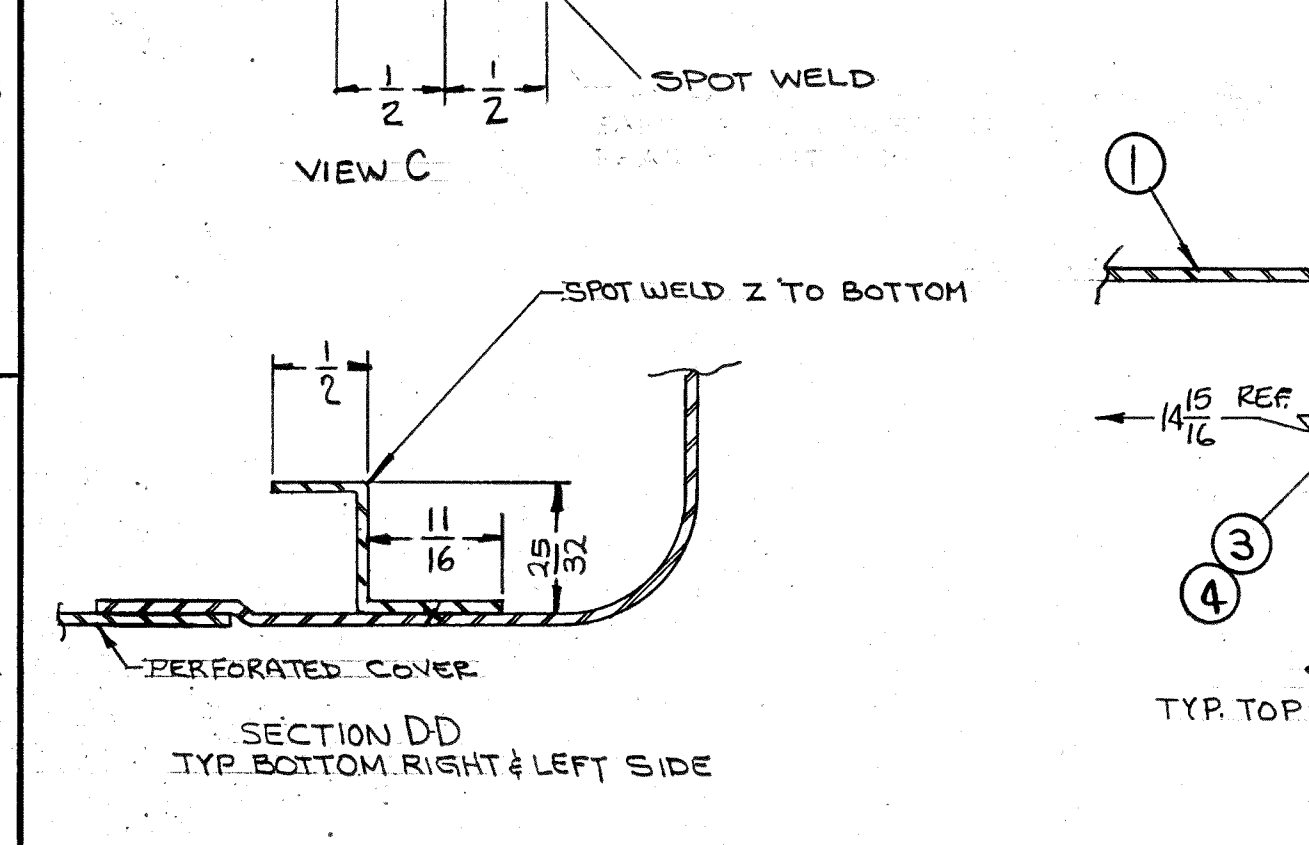
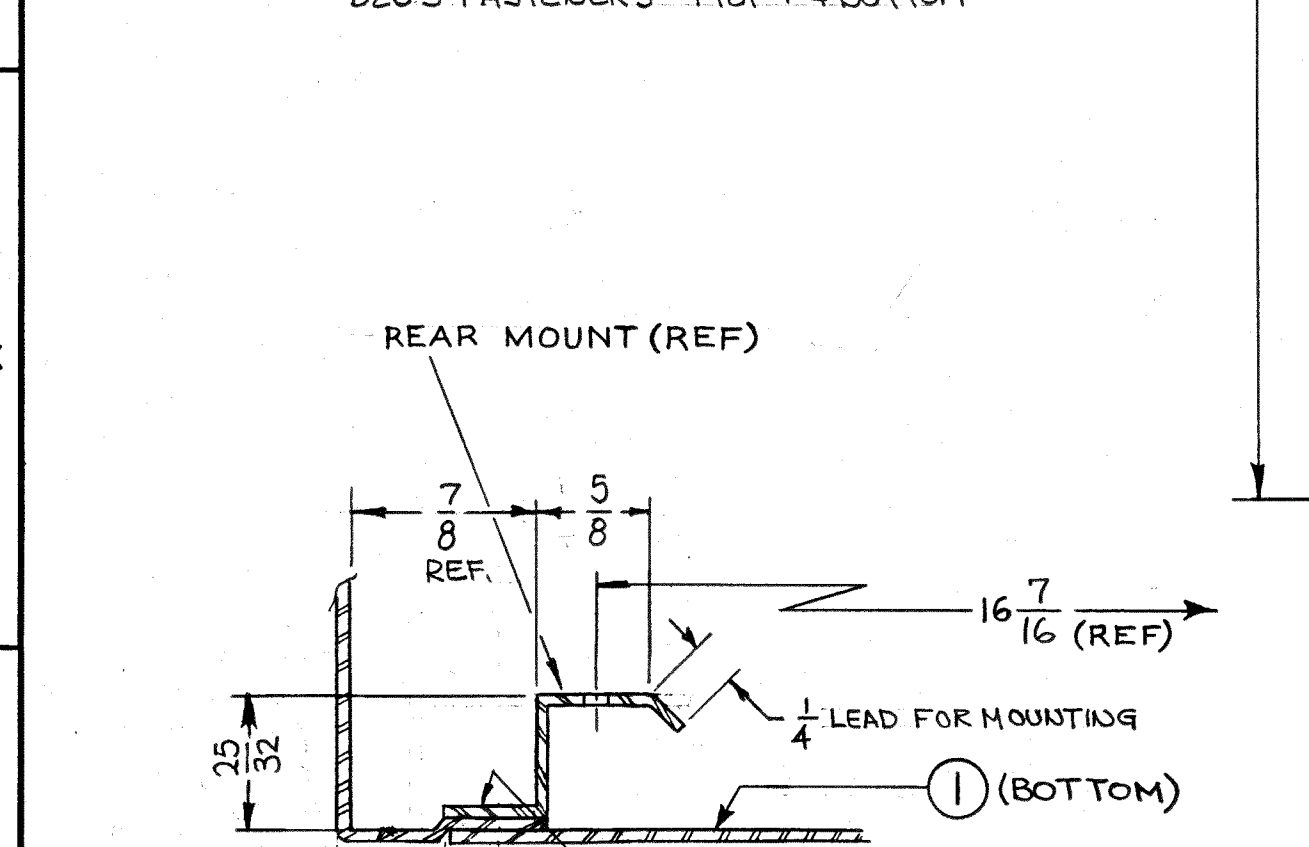
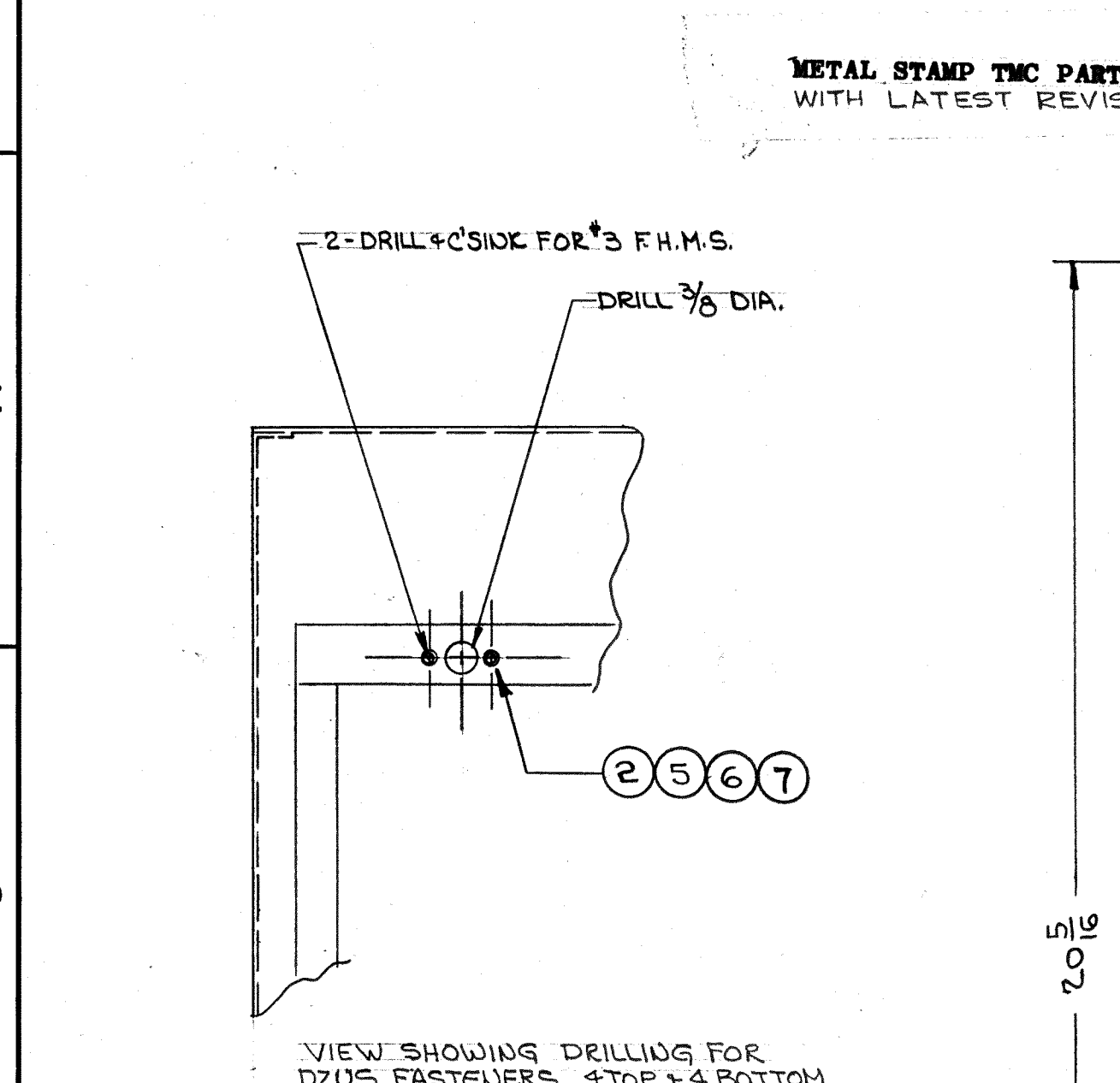


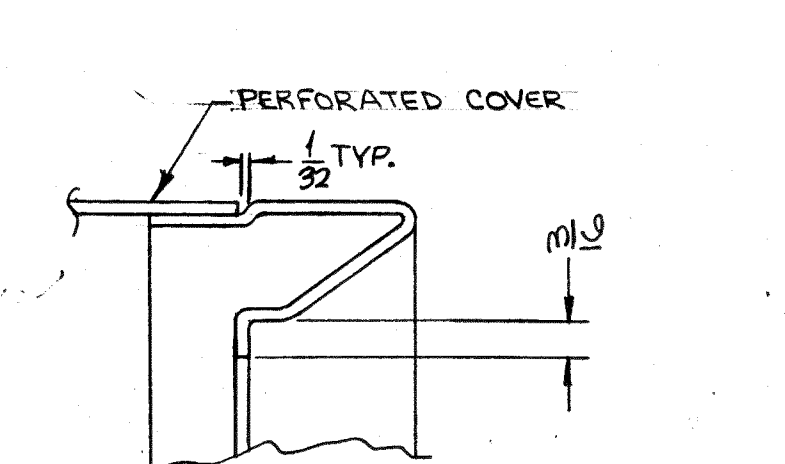
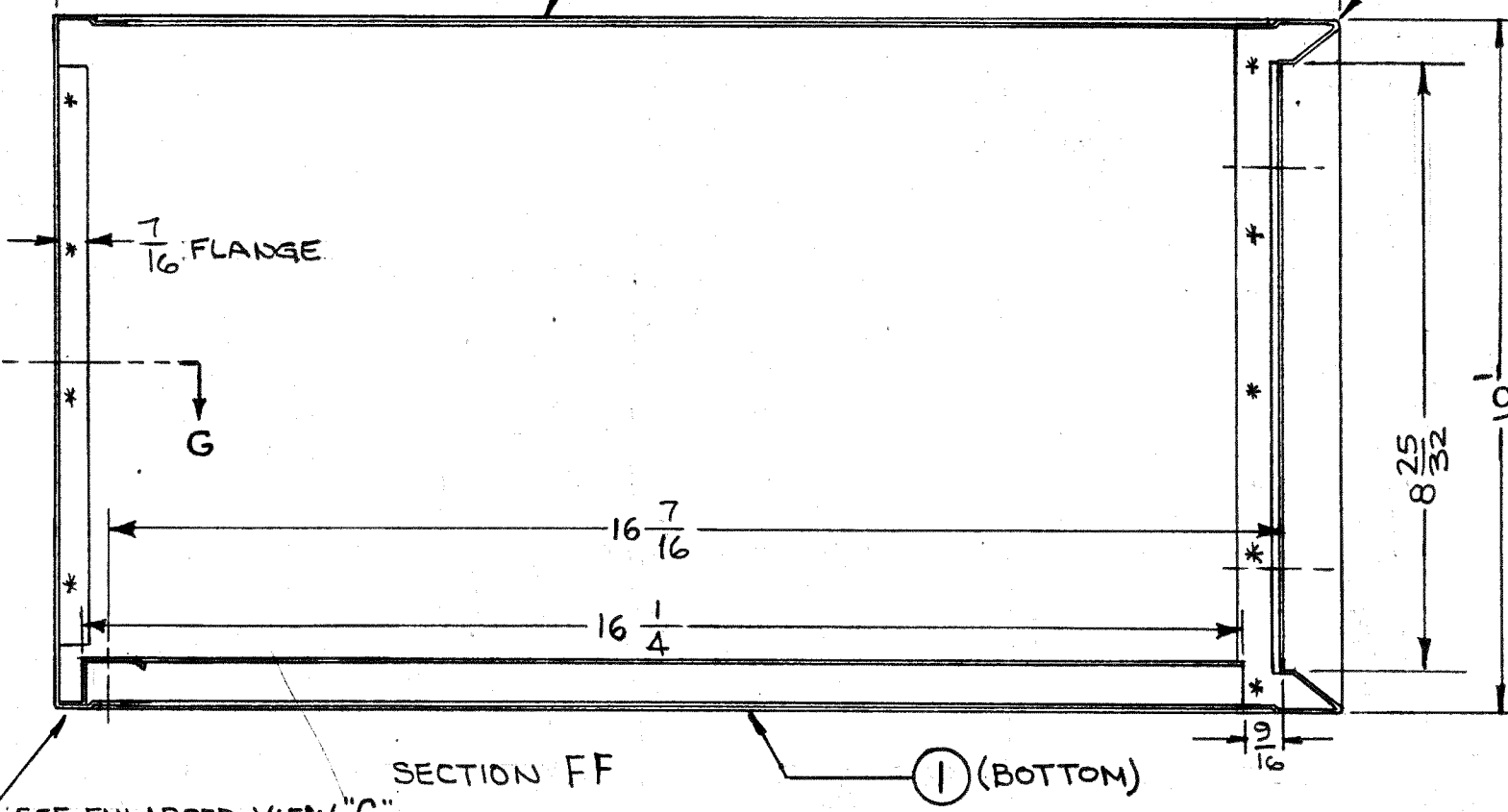
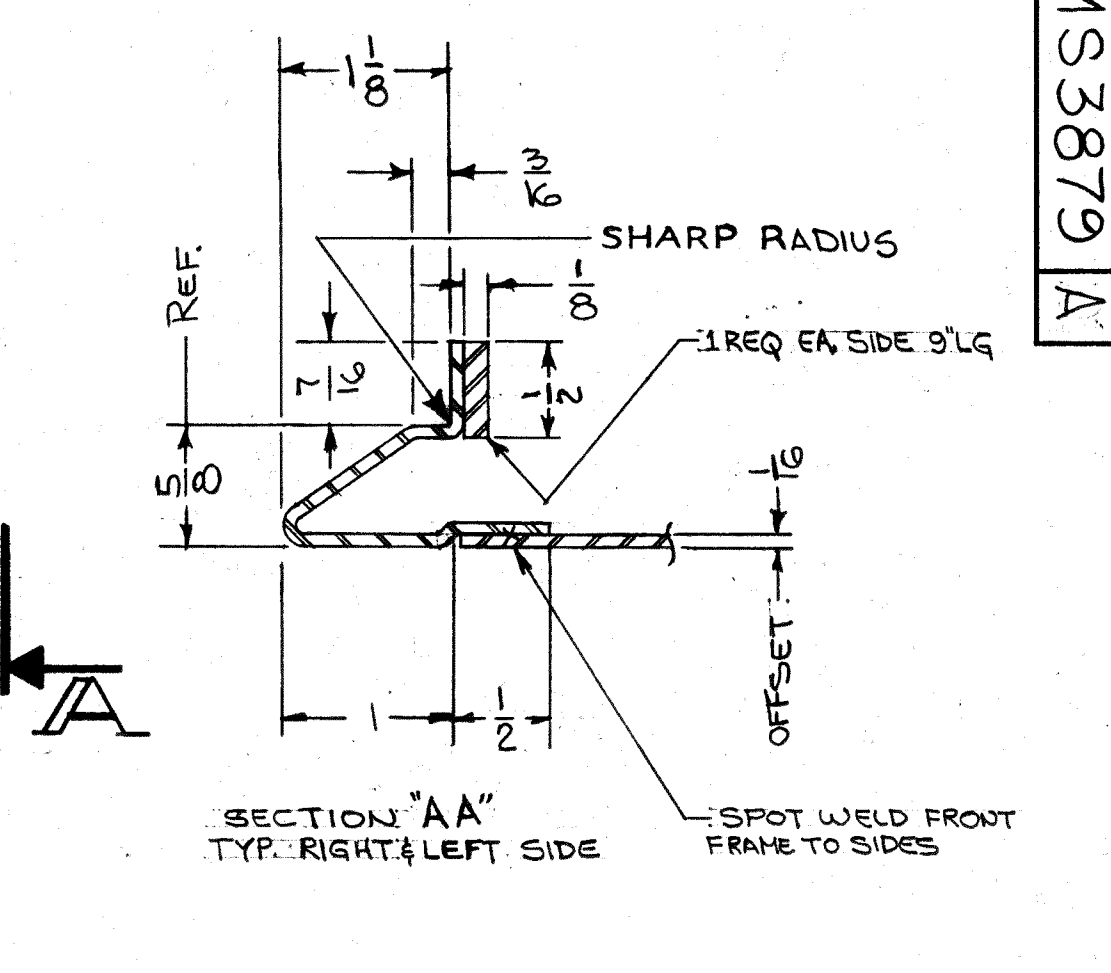
REVISIONS											
ZONE	SYM	DESCRIPTION	DATE	E.M.N. NO.	DRAFT	CHKD	APPD				
X1		REAR MTG & SIDE MTGS EXTENDED HOLES ON REAR MTG ADDED	8-10-64	X1	MP						
X2		ITEMS (1) THRU (3) AND VIEW 'A-A' ADDED CALL-OUTS & DIMENSIONAL UPDATES	8-18-64	X2							
O		ORIGINAL RELEASE FOR PRODUCTION COVER & ALT. CONSTRUCTION DETAILS ADDED REAR MOUNT DETAIL REV. DIM 19 1/2 WAS 19 1/4, 18 3/4 WAS 18 1/2, 18 5/8 WAS 18 3/8, 16 1/8 WAS 16 1/8 17 1/8 WAS 16 3/4, 20 3/8 WAS 20 1/2	9-18-64								

ALTERNATE CONSTRUCTION OF SECTION G-G.
 SPOTWELD REAR SUPPORT TO SIDE SUPPORTS.
 SECTION G-G
 HOLE DIMENSIONS OF REAR PANEL

1 PERFORATED COVER MAT'L - 16 GA. CRS ONE TOP & ONE BOTTOM REQ.



- NOTES
- SEAM WELD AND GRIND SMOOTH WHERE REQUIRED.
 - SPOT WELD ALL JOINING PARTS SECURELY.
 - USE MATERIAL THICKNESS FOR MAX. RADIUS ON ALL BENDS UNLESS OTHERWISE NOTED.
 - ALL ANGULAR BENDS 90° UNLESS NOTED.
 - REMOVE ALL BURRS AND SHARP EDGES.
 - FINISH: 5520-BLUE-GRAY TEXTURED VINYL PAINT, OR CUSTOMER SPECIFICATIONS.
 - ONE TOP COVER & ONE BOTTOM COVER TO BE SUPPLIED BY MANUFACTURER.



VIEW B: NOTE: ALL DIM. SAME AS SECT. AA EXCEPT AS NOTED

REQ'D.	ITEM	PART NUMBER	DESCRIPTION	SYMBOL
	16	7	NTH0348BNG	NUT, HEX.
	16	6	LW503MRN	WASHER, LOCK
	16	5	SCFP0348BNG	SCREW, MACHINE
	B	4	F5110-1	STUD, SLOTTED HEAD
	B	3	F5109-1	RING, STUD RETAINING
	B	2	F5102-1	SPRING, TYPE 'S'
X	1		SEE NOTE #7	COVER, TOP & BOTTOM

GELLMAN		LIST OF MATERIAL	
MATERIAL	TITLE	THE TECHNICAL MATERIAL CORP. MAMARONECK, NEW YORK	
#16 (059) GA CRS 4AS NOTED	CABINET, GPR-92		
FINISH	AS NOTED		

QTY./UNIT	SCALE	MODEL USED ON	CODE	ASBY. NO.
NONE	NONE	S-401-184	A	J. SCHIFFER

DRAWN	DATE	FINAL APPROVAL	DATE
J. SCHIFFER	3-17-64	R.L.C.	

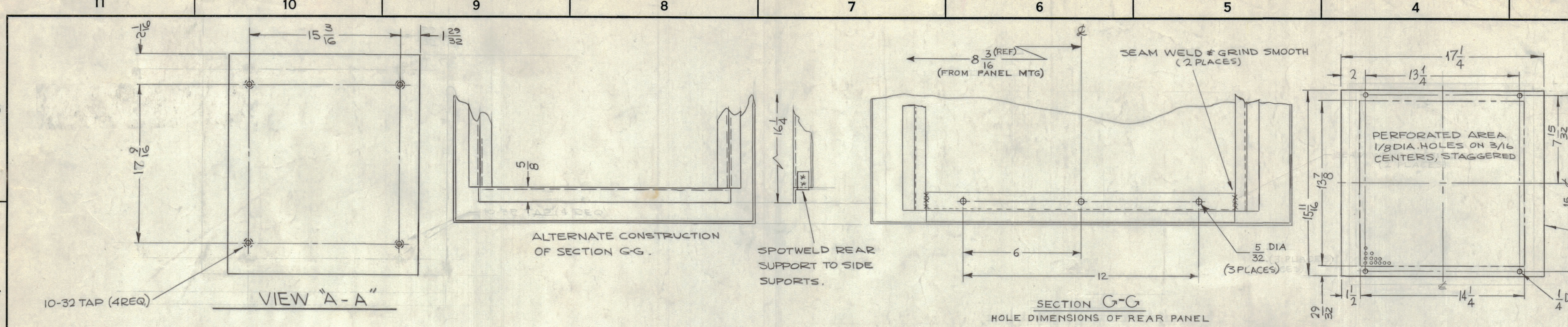
UNLESS OTHERWISE SPECIFIED DIMENSIONS ARE IN INCHES AND INCLUDE CHEMICALLY APPLIED OR PLATED FINISHES

DECIMALS: X ± .005, XX ± .01, XXX ± .005

FRACTIONS: ± 1/64 ANGLES: ± 0° 30'

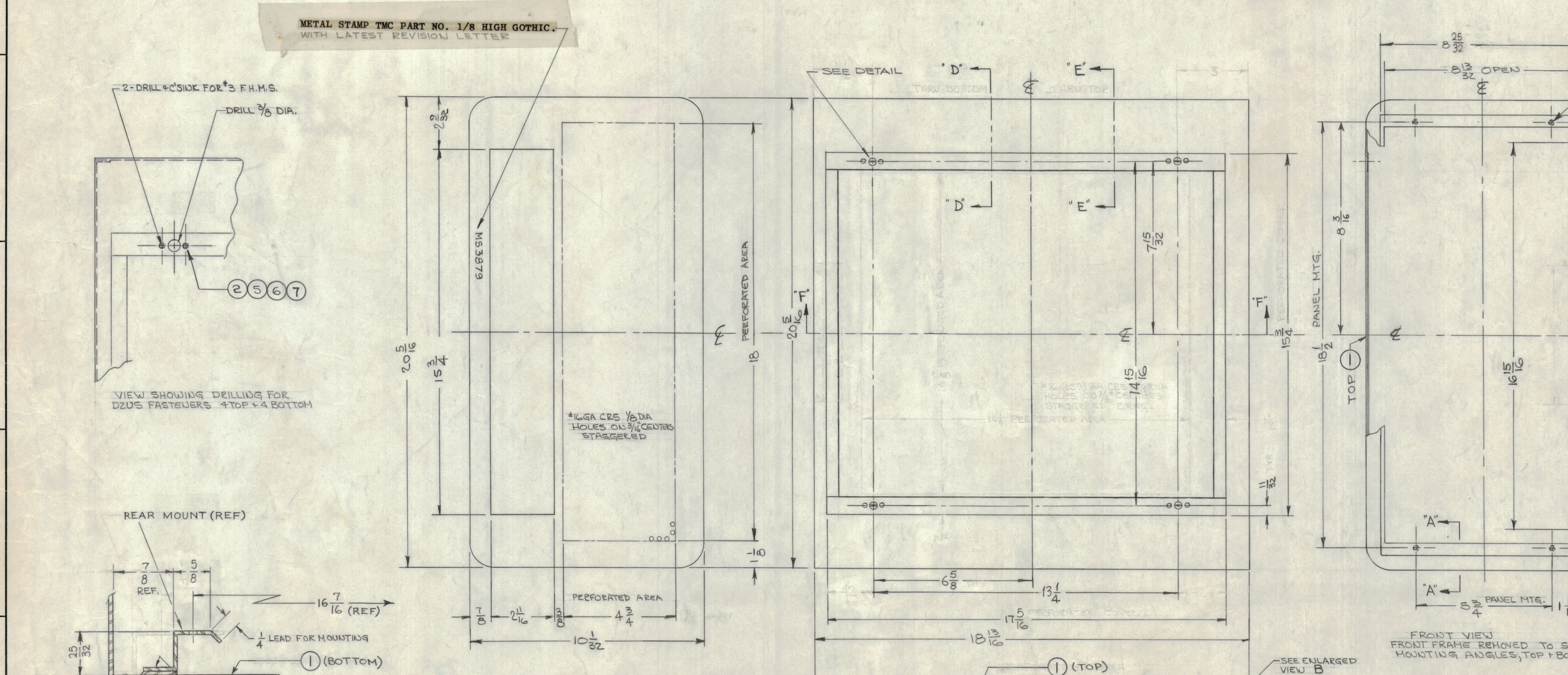
TOLERANCES: ± 1/64 ANGLES: ± 0° 30'

DATE: MS 3879 A

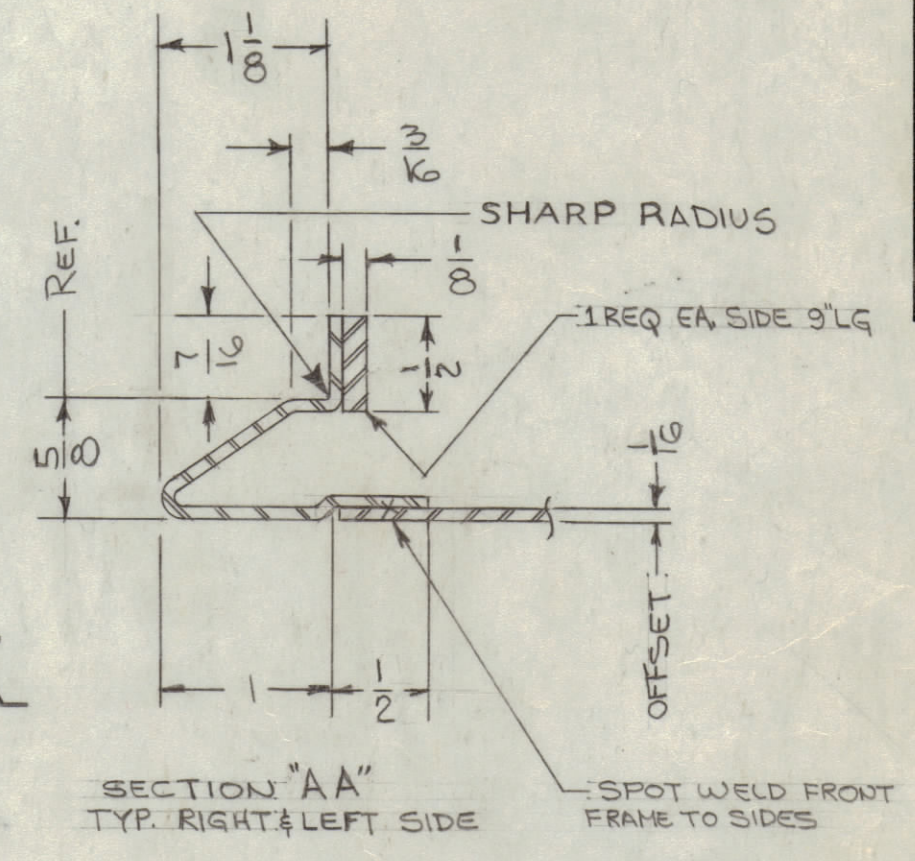
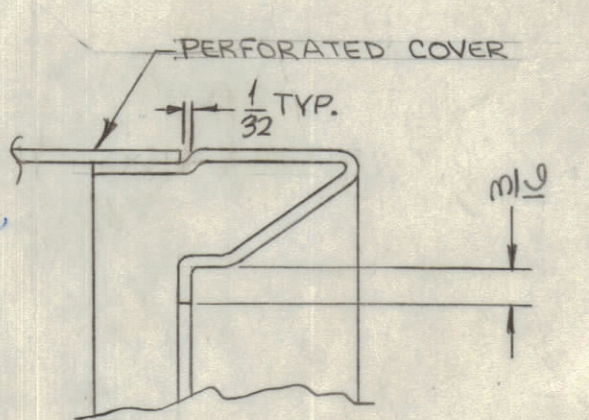
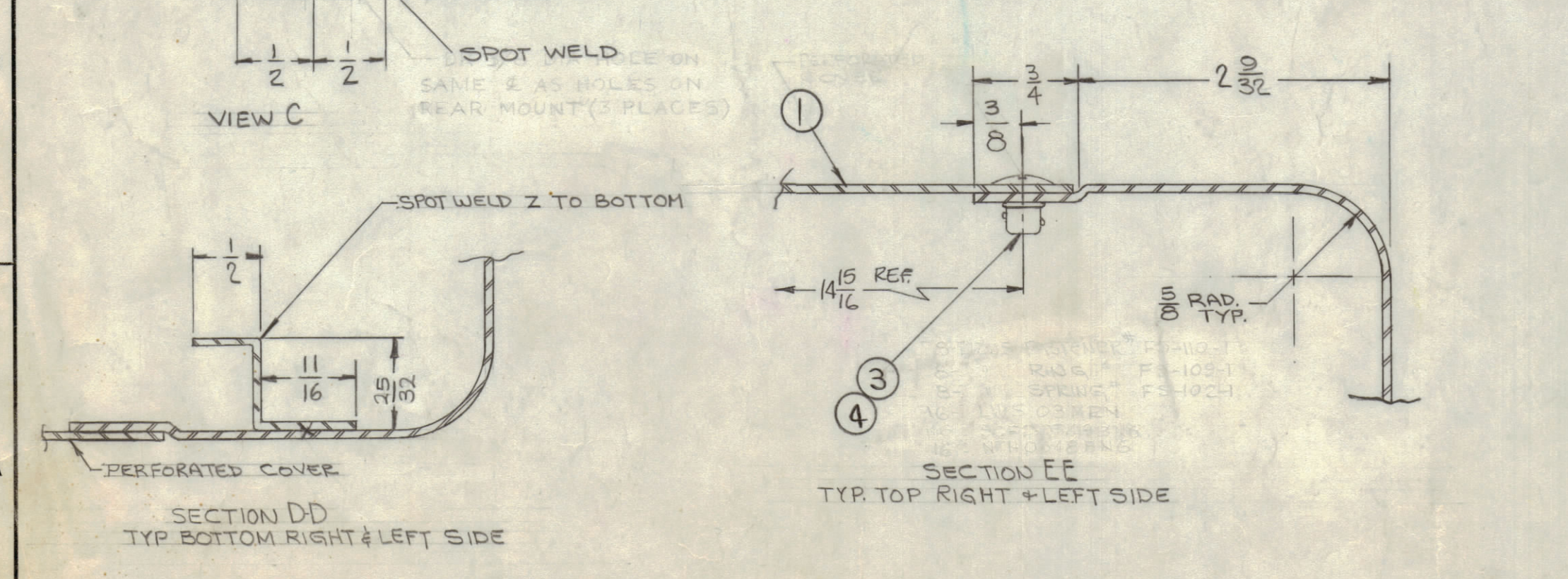


REVISIONS						
ZONE	SYM	DESCRIPTION	DATE	E.M.N. NO.	DRAFT	CHKD
X1		REAR MTG & SIDE MTGS EXTENDED HOLES ON REAR MTG, ADDED	8-10-64	X1	NP	
X2		ITEMS (1) THRU (7), AND VIEW "A-A" ADDED CALLOUTS & PICTORIAL UPDATED	8-18-64	X2	SRG	
A		ORIGINAL RELEASE FOR PRODUCTION COVER & ALT CONSTRUCTION DETAILS ADDED, REAR MOUNT DETAIL REV DIM 15 1/16 WAS 19 1/32, 18 3/16 WAS 18 1/8, 25 3/32 WAS 25 3/8, 25 1/16 WAS 16 3/8, 17 3/16 WAS 16 3/16, 25 3/32 WAS 49 6/64	9-18-64	12365	SRG	

METAL STAMP TMC PART NO. 1/8 HIGH GOTHIC, WITH LATEST REVISION LETTER



- NOTES**
- 1- SEAM WELD AND GRIND SMOOTH WHERE REQUIRED.
 - 2- SPOT WELD ALL JOINING PARTS SECURELY.
 - 3- USE MATERIAL THICKNESS FOR MAX. RADIUS ON ALL BENDS UNLESS OTHERWISE NOTED.
 - 4- ALL ANGULAR BENDS 90° UNLESS NOTED.
 - 5- REMOVE ALL BURS AND SHARP EDGES.
 - 6- FINISH: 5520-BLUE-GRAY TEXTURED VINYL PAINT, OR CUSTOMER SPECIFICATIONS, TO BE SUPPLIED BY MANUFACTURER.



QTY./UNIT	MODEL USED ON	ASSY. NO.	DESCRIPTION	SYMBOL
16	7	NTH0348BG	NUT, HEX.	
16	6	LW303MRN	WASHER, LOCK	
16	5	SCFP0348BG	SCREW, MACHINE	
8	4	FS10-1	STUD, SLOTTED HEAD	
8	3	FS109-1	RING, STUD RETAINING	
8	2	FS102-1	SPRING, TYPE "S"	
X	1	SEE NOTE #7	COVER, TOP & BOTTOM	

LIST OF MATERIAL

GELLMAN MATERIAL #16 (059) GA CRS 4-AS NOTED

THE TECHNICAL MATERIEL CORP. MAMARONECK, NEW YORK

FINISH: AS NOTED

TITLE: CABINET, GPR-92

DRAWN: 3-21-64 J. SCHIFFER	DATE: 3-21-64	FINAL APPROVAL: [Signature]	DATE: []
CHECKED: [Signature]	DATE: 3-17-64		
ELECTRICAL: [Signature]	DATE: []		
MECH. DES.: [Signature]	DATE: []		

UNLESS OTHERWISE SPECIFIED DIMENSIONS ARE IN INCHES AND INCLUDE CHEMICALLY APPLIED OR PLATED FINISHES

DECIMALS: ± .05
FRACTIONS: ± 1/64
ANGLES: ± 5' 30"

THE CONTENTS OF THIS DRAWING ARE THE EXCLUSIVE PROPERTY OF THE TECHNICAL MATERIEL CORP. ITS UNAUTHORIZED USE OR REPRODUCTION IN WHOLE OR IN PART IS STRICTLY FORBIDDEN.

SCALE: NONE CODE: A S-401-184 J. SCHIFFER

STOCK NO. 4407

MS 3879 A