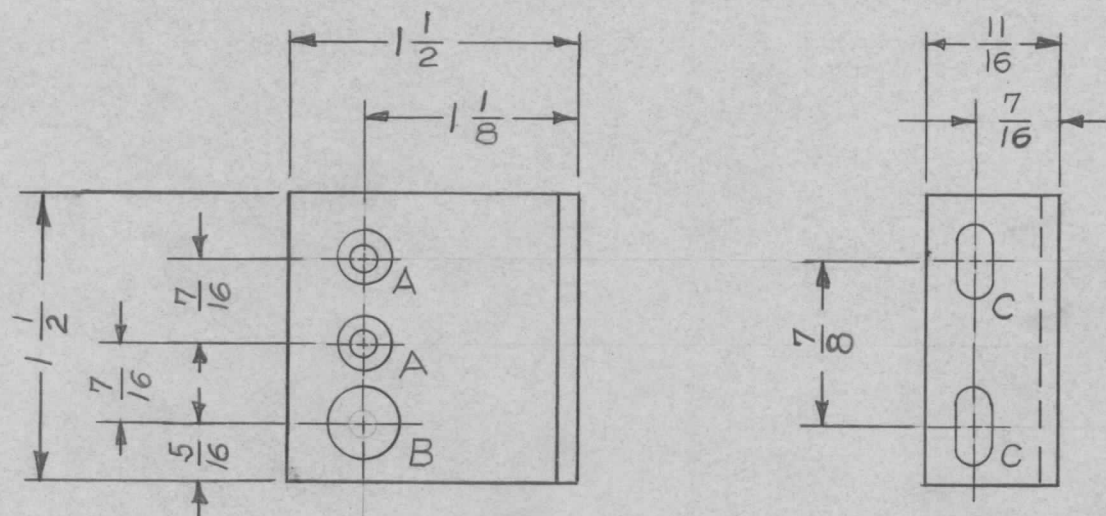


TMC PART NO.	DESCRIPTION	REQ. PER UNIT	USED ON			MS3868 Ø
			MODEL	ASS'Y. NO.	DATE	
MS3868-1	AS SHOWN (LEFT HAND)	1	200K	AX 394	6-23-64	
MS3868-2	OPPOSITE (RIGHT HAND)					



HOLE LEGEND		
HOLE	DIAMETER	REQD
A	.144 DIA.-CSK 82°.284	2
B	3/8 DIA.	1
C	3/16 x 3/8 SLOT	2

UNLESS OTHERWISE SPECIFIED
 1. USE MATERIAL THICKNESS ON ALL BENDS FOR MAX RADIUS
 2. REMOVE ALL BURRS AND SHARP EDGES, BENDS 90°
 3. ALL ANGULAR BENDS 90°

SYM	DESCRIPTION	DATE	CH. NO.	DRAFTS	CHECKER	ENG. APP.	REQ. ITEM	PART NO.	BUDETTI	DESCRIPTION	SYMBOL	
Ø	ORIGINAL RELEASE FOR PRODUCTION	7/1/64	Ø	A.M.				.090 THK.		THE TECHNICAL MATERIEL CORP. MAMARONECK. NEW YORK		
X	EXPERIMENTAL RELEASE	6-23-64	X	A.M.	@			ALUMINUM		BRACKET, ANGLE SWITCH MOUNTING		
	UNLESS OTHERWISE SPECIFIED DIMENSIONS ARE IN INCHES AND INCLUDE CHEMICALLY APPLIED OR PLATED FINISHES	SCALE	1:1					5052-H32	—	A. MARINO	@	
DECIMALS .X ± .05 .XX ± .01 .XXX ± .005	TOLERANCES	FRACTIONS ± 1/64 ANGLES ± 0° 30'	CODE A					TYPE & TEMPER 5404-IRIDITE 14-2 AL-COAT	HEAT TREAT. SPEC.	DRAWN @	CHECKED @	FINAL APPROVAL MS3868 Ø
							FINISH & SPEC. NO.	ELEC. DES. APP.	MECH. DES. APP.			