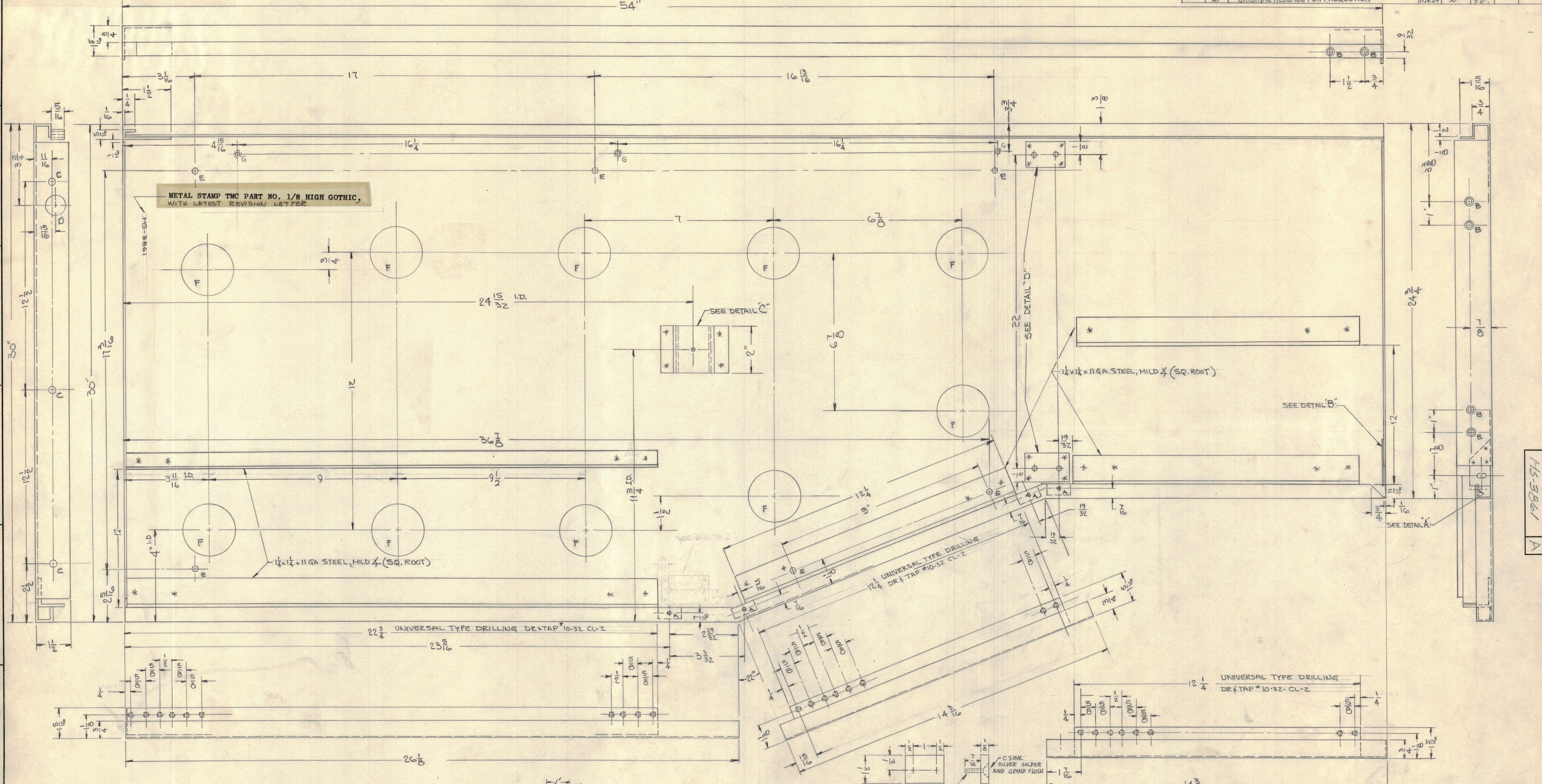


REVISIONS							REVISIONS						
ZONE	SYM	DESCRIPTION	DATE	E.M.N. NO.	DRAWN	CHKD	DATE	E.M.N. NO.	DRAFT	CHKD	APPD		
F-11	A	ON PKG. D" HOLE LOC. DIM. 3 3/4 WAS 3 1/2.	10/2/64	112511	RFE	CA							
	X	EXPER. RELEASE											
	XI	D" DETAIL ADDED											
	XII	ORIGINAL RELEASE FOR PRODUCTION	2/26/64										



METAL STAMP TMC PART NO. 1/8 HIGH GOTHIC,
WITH LATEST REVISION LETTER

1/2 x 1/2 x 11 GA. STEEL, MILD (SQ. ROOT)

1/2 x 1/2 x 11 GA. STEEL, MILD (SQ. ROOT)

HOLE LEGEND		
A - DR. TAP FOR #8-32	4 REQ	
B - C'SINK FOR #8-32 FHMS.	6 REQ	
C - 1/4 (250) DIA.	3 REQ	
D - 7/8 (875) DIA.	1 REQ	
E - 13/64 (202) DIA.	6 REQ	
F - 2 1/4 DIA.	10 REQ	
G - C SINK FOR #6-32 FHMS	3 REQ	

NOTE
* SPOT WELD ALL JOINING PIECES SECURELY

UNLESS OTHERWISE SPECIFIED:

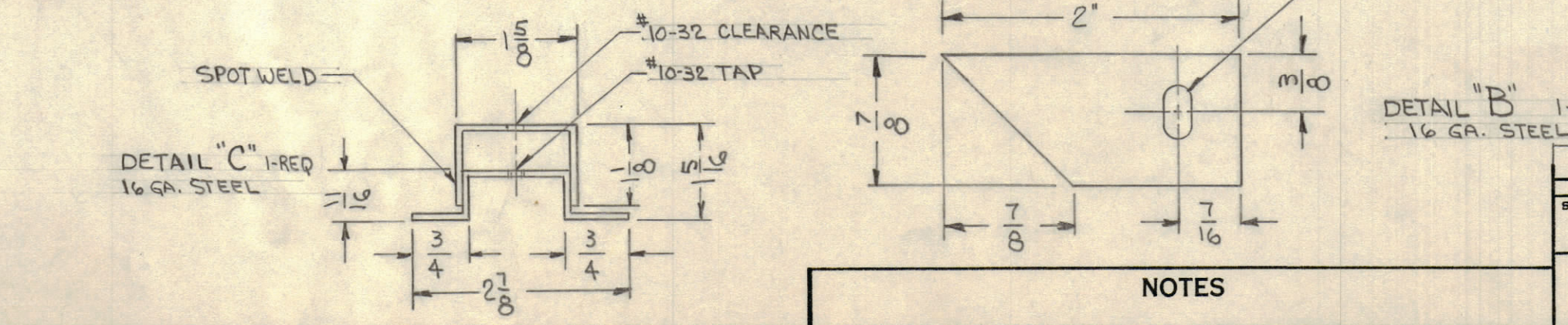
- USE MATERIAL THICKNESS FOR MAXIMUM RADIUS ON ALL BENDS.
- ALL ANGULAR BENDS 90°.
- REMOVE ALL BURRS AND SHARP EDGES.

DETAIL 'A' 4 REQ
1/16 GA. STEEL

DETAIL 'C' 1-REQ
1/16 GA. STEEL

DETAIL 'D' 2 REQ
1/16 GA. STEEL

DETAIL 'B' 1-REQ
1/16 GA. STEEL



NOTES

REQ'D.	ITEM	PART NUMBER	DESCRIPTION	SYMBOL
	STURMER LIST OF MATERIAL			
	MATERIAL		THE TECHNICAL MATERIEL CORP.	
	16 GA. STEEL		MAMARONECK, NEW YORK	
	FINISH		TITLE	
			PANEL, RIGHT, INSIDE	
	QTY./UNIT	MODEL USED ON	DRAWN	DATE
	1	CODE A	SCHIFFER	9-29-64
	SCALE		CHECKED	DATE
	DONE			DATE
THE CONTENTS OF THIS DRAWING ARE THE EXCLUSIVE PROPERTY OF THE TECHNICAL MATERIEL CORP. ITS UNAUTHORIZED USE OR REPRODUCTION IN WHOLE OR IN PART IS STRICTLY FORBIDDEN.			DATE	DATE
			7-24-64	MS-3861 A

MS-3861 A