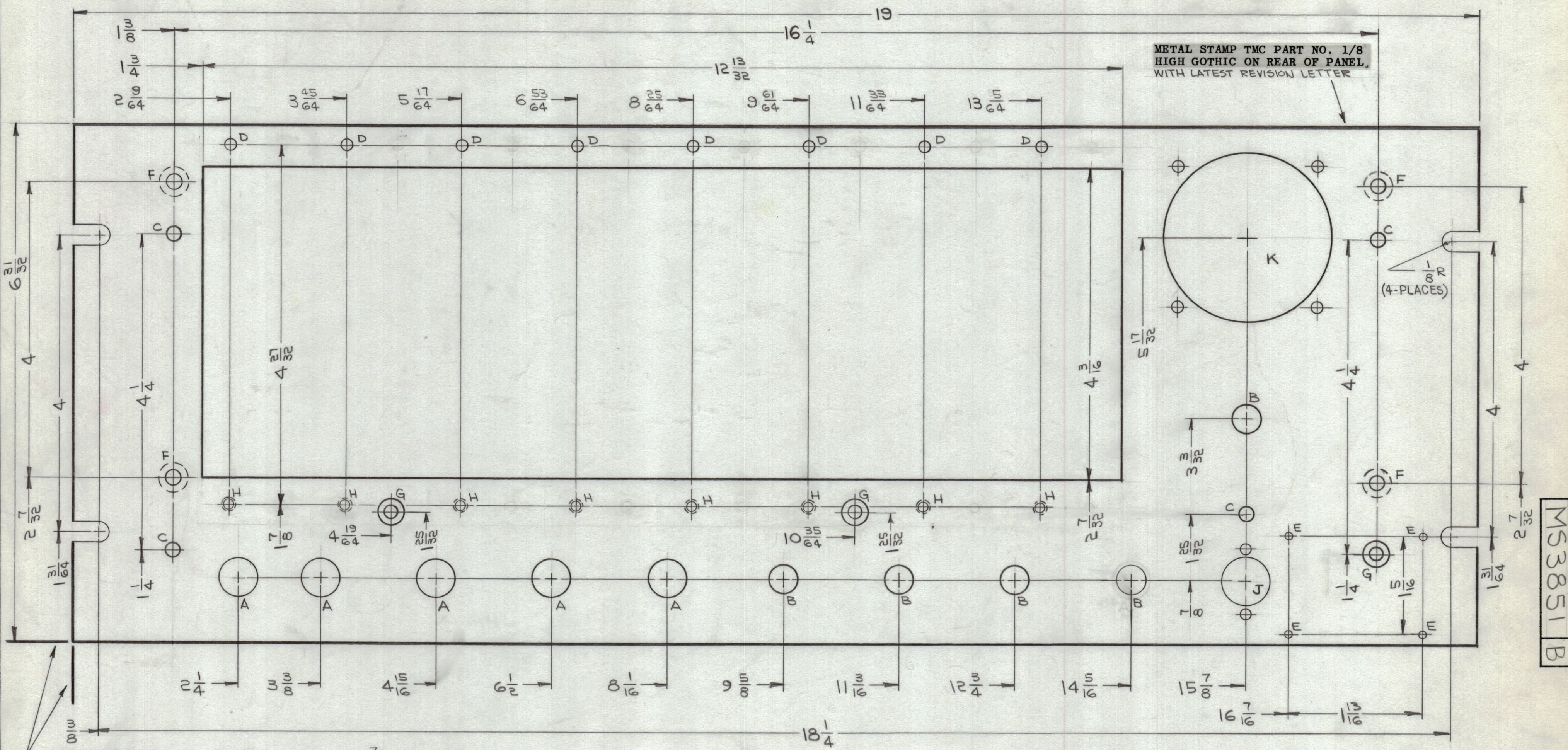
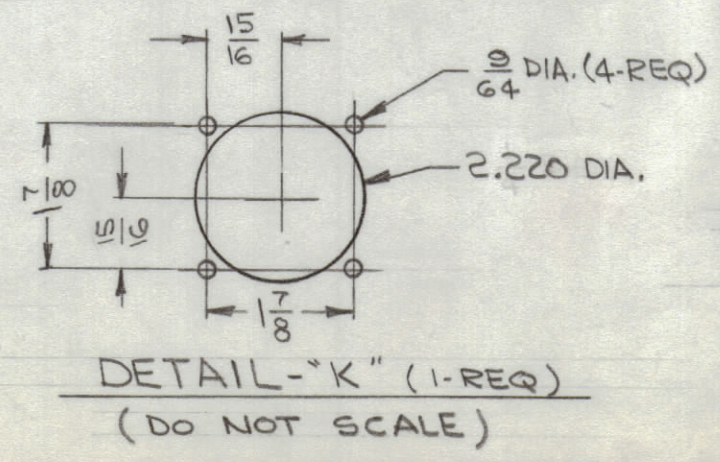
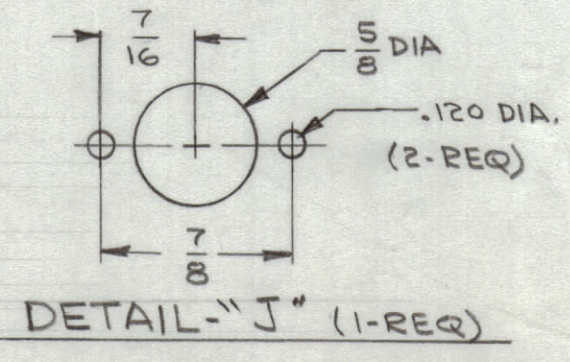


REVISIONS						
ZONE	SYM	DESCRIPTION	DATE	E.M.N. NO.	DRAFT	CHKD APPD
#	X	EXPER. RELEASE	8-13-64	X		
	Ø	ORIGINAL RELEASE FOR PRODUCTION	9-17-64	Ø		
	A	CLERICAL CHANGE	9-30-64			
B6	B	DET. "K", 2.220 DIA. HOLE WAS 2 Y4 DIA.	2-10-65	13420		



HOLE	DESCRIPTION	REQ.
A	1/2 DIA.	5
B	3/8 DIA.	5
C	3/16 DIA.	4
D	.136 DIA.	8
E	.070 DIA.	4
F	.196 DIA. HOLE, C'SINK 82° TO .390 DIA. ON REAR	4
G	.169 DIA. HOLE, C'SINK 82° TO .337 DIA.	3
H	SEE DETAIL	8
J	SEE DETAIL	1
K	SEE DETAIL	1

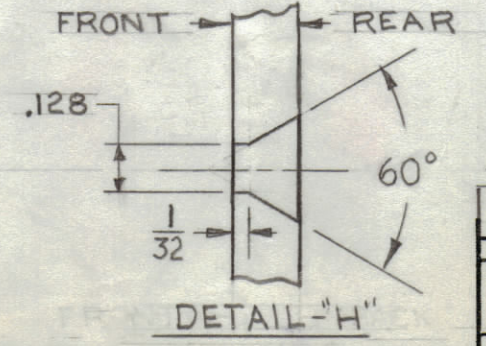


MACHINING:

- MILL ALL EDGES.
- HOLES MUST BE DRILLED, UNLESS OTHERWISE SPECIFIED.
- LATERAL BOW OF PANEL MUST BE KEPT TO .031 TOLERANCE.
- PANEL MUST BE FREE OF ALL MACHINING MARKS, GOUGES AND SCRATCHES. IF NECESSARY, SAND FRONT OF PANEL WITH NO. 120 GRIT SANDPAPER.

FINISH NOTES:

- S404 - IRIDITE 14-2 AL-COAT.
- S114 - ZINC CHROMATE PRIMER) FRONT AND
- S115 - SMOOTH GRAY ENAMEL) EDGES ONLY



NOTES

REF: LD1561 (4) 2 SHEETS

REQ'D.	ITEM	PART NUMBER	DESCRIPTION	SYMBOL
T. AALTONEN LIST OF MATERIAL				
MATERIAL		3/16, ALUMINUM 2024-T3		
FINISH		SEE NOTES		
THE TECHNICAL MATERIEL CORP.		MAMARONECK, NEW YORK		
TITLE		PANEL, FRONT		
DRAWN	DATE	FINAL APPROVAL	DATE	
CHECKED	DATE			
ELECT. DES.	DATE	MS3851		B
MECH. DES.	DATE	SHEET		REV. LTR.

QTY./UNIT	MODEL USED ON	ASS'Y. NO.
1	SME-1	
SCALE	CODE	
1:1	A	

THE CONTENTS OF THIS DRAWING ARE THE EXCLUSIVE PROPERTY OF THE TECHNICAL MATERIEL CORP. ITS UNAUTHORIZED USE OR REPRODUCTION IN WHOLE OR IN PART IS STRICTLY FORBIDDEN.

MS3851 B