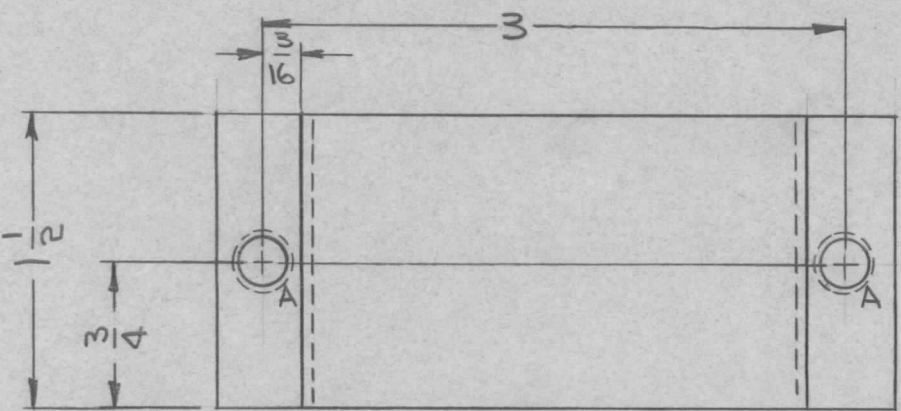
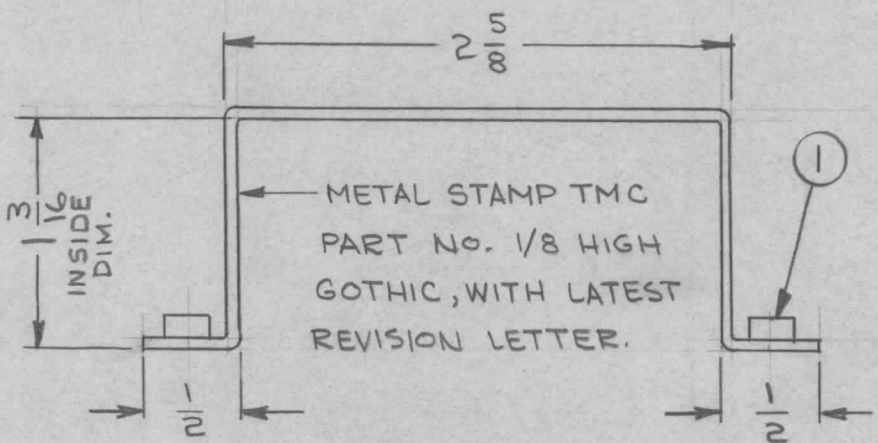


REQ. PER UNIT	USED ON			MS3846 ∅
	MODEL	ASS'Y. NO.	DATE	
1	RAK-31A	A3666	6-5-64	
1	RAK-31C	A3666	6-5-64	



HOLE
A - .221" - .224" DIA. 2 REQ.

- UNLESS OTHERWISE SPECIFIED:
1. USE MATERIAL THICKNESS FOR MAXIMUM RADIUS ON ALL BENDS.
 2. ALL ANGULAR BENDS 90°.
 3. REMOVE ALL BURRS AND SHARP EDGES.
 4. MOUNT INSERTS AFTER FINISHING.



2	1	NT129-832-4	NUT, ROUND, SWAGE TYPE			A
∅	ORIGINAL RELEASE FOR PRODUCTION		6/16/64	∅	A.M.	
XI	ITEM WAS NT129-1032-4 A HOLE WAS .250-.253 DIA. 1 3/16 DIM RELOCATED		6/15/64	XI	A.M.	
X	EXPER. RELEASE		6-5-64	1		
SYM	DESCRIPTION	DATE	CH. NO.	DRAFTS	CHECKER	ENG. APP.
UNLESS OTHERWISE SPECIFIED DIMENSIONS ARE IN INCHES AND INCLUDE CHEMICALLY APPLIED OR PLATED FINISHES		SCALE		1:1		
DECIMALS .X ± .05 .XX ± .01 .XXX ± .005	TOLERANCES	FRACTIONS ± 1/64 ANGLES ± 0° 30'	CODE A			
.064 THK STOCK SIZE		THE TECHNICAL MATERIEL CORP. MAMARONECK. NEW YORK				
ALUMINUM		BRACKET, MOUNTING, CAPACITOR				
5052-H32						
TYPE & TEMPER	HEAT TREAT. SPEC.	DRAWN	CHECKED	FINAL APPROVAL		
S404 YELLOW IRIDITE		6-16-64		MS3846 ∅		
FINISH & SPEC. NO.		ELEC. DES. APP.	MECH. DES. APP.			