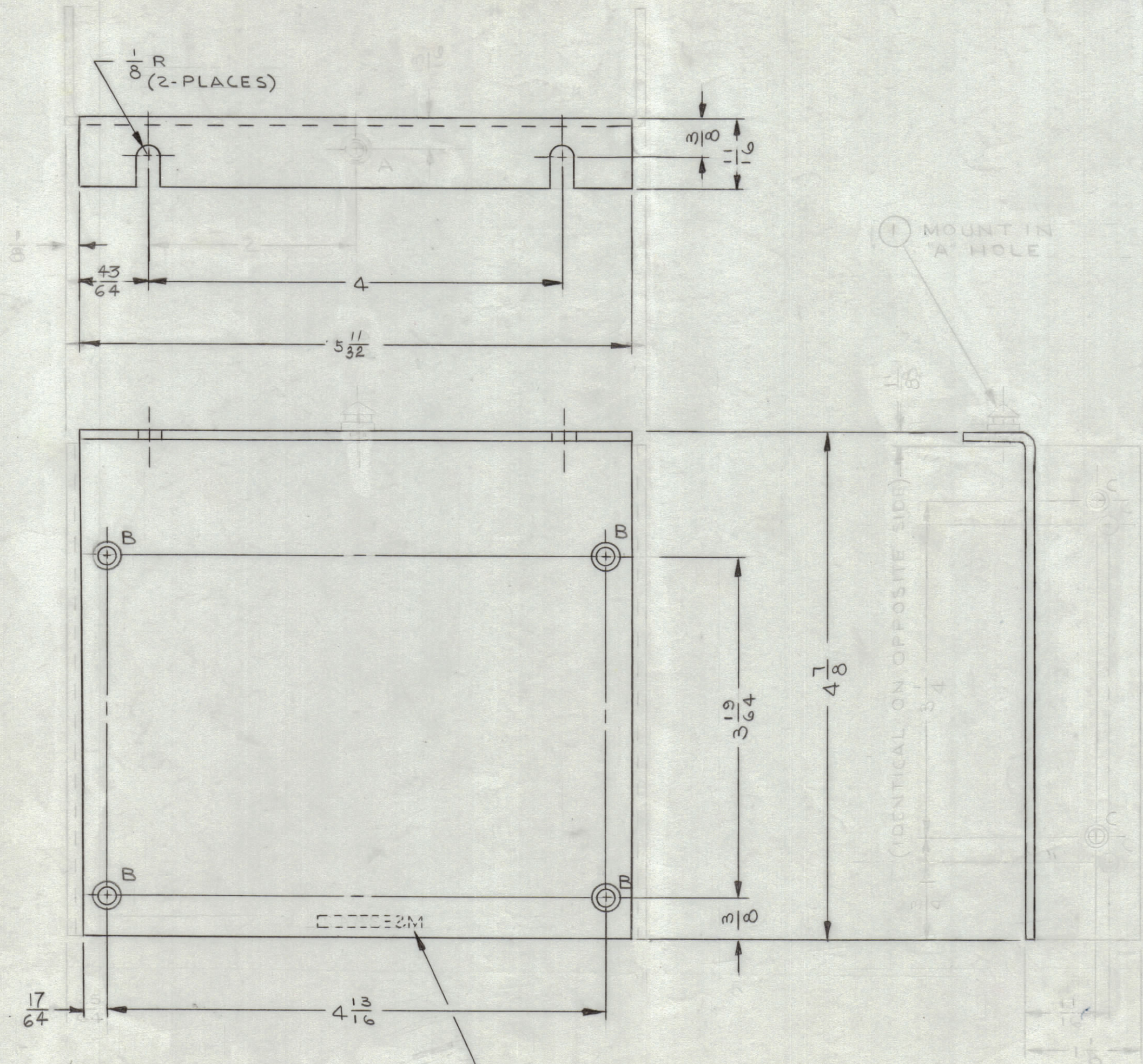


REVISIONS							
ZONE	SYM	DESCRIPTION	DATE	E.M.N. NO.	DRAFT	CHKD	APPD
	X	EXPERIMENTAL RELEASE	6/4/64		JL		WJ
	X1	RELOCATED "C" HOLES; "C" HOLES WERE 13/64 DIA; ADDED C'SINK TO "A" HOLE.	7/10/64		JL		WJ
	X2	"B" HOLES WERE 3/16 DIA; "C" HOLES WERE 13/64 DIA.	8/24/64		JL		W.J.
	X3	RTMU-1 QTY/UNIT WAS (2); RTPA-1 WAS RTPP-1	1/5/64		JL	J.M.	W.J.
	Ø	ORIGINAL RELEASE FOR PRODUCTION	1/19/65	Ø	@	J.M.	
	A	DELETE IT. 1 FS121-4, 1" HOLE & 4 "C" HOLES, C/O, 2, 3/8 LIPS. 5 1/32 WAS 5 7/32, 43/64 WAS 5/64, 1/4 WAS 1/8	1/23/65	14519	K.V.	JCB	DEE



HOLE LEGEND		
HOLE	DESCRIPTION	REQ'D
A	Ø 1/8 (4 HOLES) DR 8°	1
C	C'SINK 82° X .230 DIA	1
B	.169 DIA & C'SINK 82° X .337 DIA	4
	Ø 1/4 DIA & C'SINK 82° X .284 DIA	1

- UNLESS OTHERWISE SPECIFIED:
1. USE MATERIAL THICKNESS FOR MAXIMUM RADIUS ON ALL BENDS.
 2. ALL ANGULAR BENDS 90°.
 3. REMOVE ALL BURRS AND SHARP EDGES.
 4. MOUNT INSERTS AFTER FINISHING.

NOTES

QTY./UNIT	MODEL USED ON	ASS'Y. NO.
4	RTMU-1	A3907, A3908
2	RTPA-1	A3684

THE CONTENTS OF THIS DRAWING ARE THE EXCLUSIVE PROPERTY OF THE TECHNICAL MATERIEL CORP. ITS UNAUTHORIZED USE OR REPRODUCTION IN WHOLE OR IN PART IS STRICTLY FORBIDDEN.

REQ'D.	ITEM	PART NUMBER	DESCRIPTION	SYMBOL
F. E. EATON LIST OF MATERIAL				
MATERIAL		THE TECHNICAL MATERIEL CORP. MAMARONECK, NEW YORK		
.081 THK ALUMINUM 5052-H32		TITLE		
FINISH		PLATE, END-P.C. CARD BIN		
YELLOW IRIDITE PER S404		DRAWN		
UNLESS OTHERWISE SPECIFIED DIMENSIONS ARE IN INCHES AND INCLUDE CHEMICALLY APPLIED OR PLATED FINISHES		J. LESHINSKI		
DECIMALS		DATE		
.X ± .05		6/1/64		
.XX ± .01		DATE		
.XXX ± .005		1-18-65		
FRACTIONS		FINAL APPROVAL		
± 1/64		R		
ANGLES		DATE		
± 0° 30'		1/18/65		
TOLERANCES		MS 3842 A		
ELECT. DES.		DATE		
MECH. DES.		DATE		
W. JORDAN		1/18/65		
SHEET		REV. LTR.		

MS 3842 A