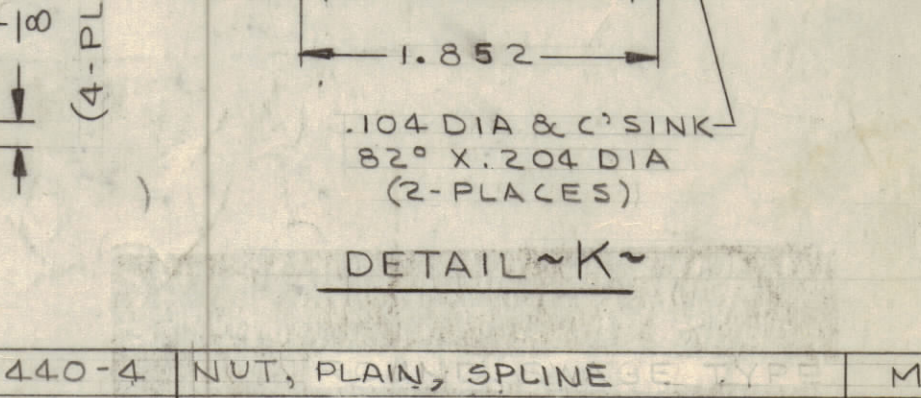
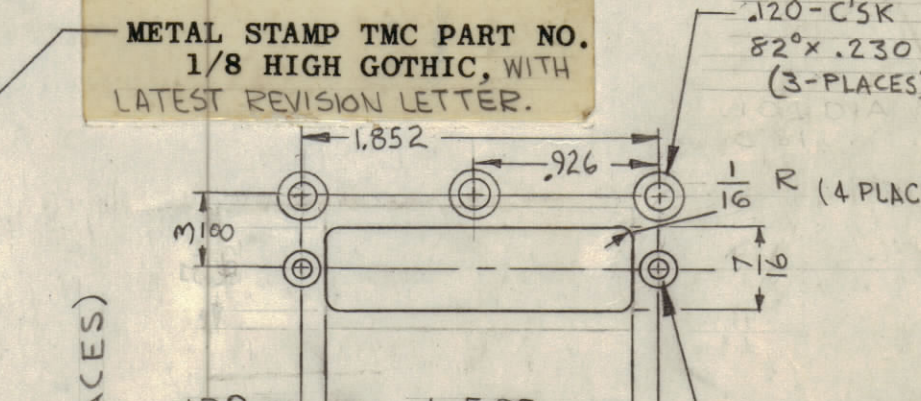
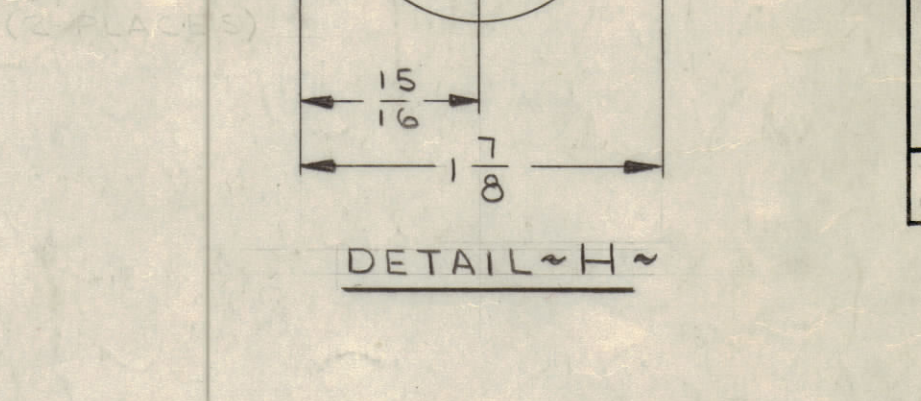
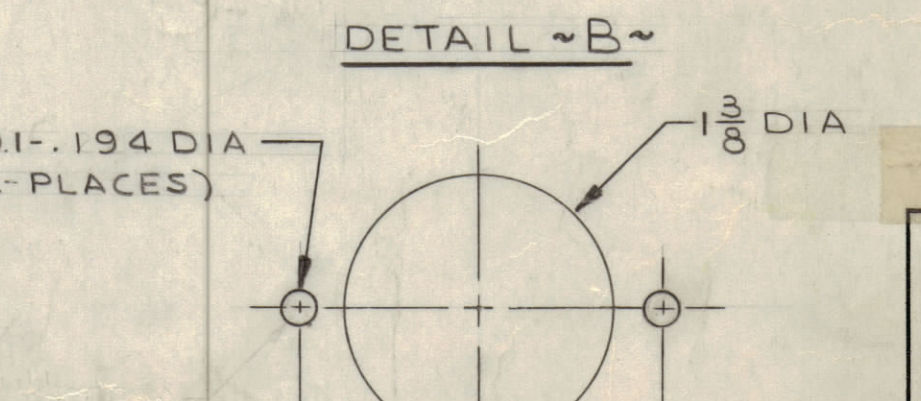
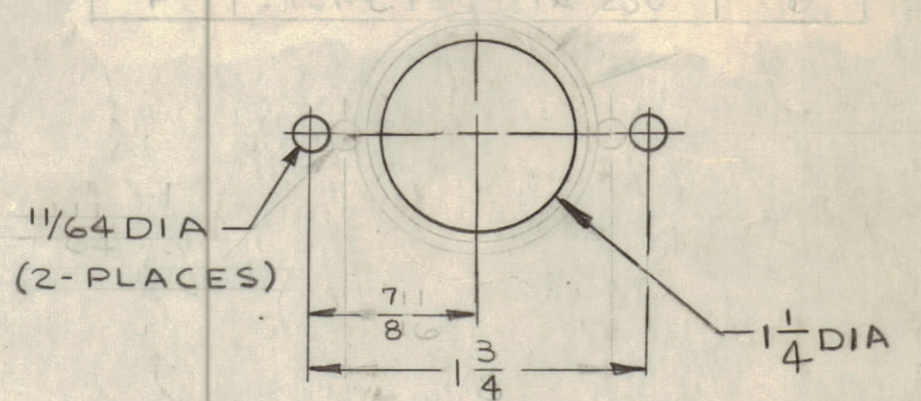


REVISIONS							
ZONE	SYM	DESCRIPTION	DATE	E.M.N. NO.	DRAFT	CHKD	APPD
	X	EXPERIMENTAL RELEASE	5/25/64	X	JL		WJ
	X1	COMPLETELY REVISED	6/17/64	X1	JL		WJ
	X2	"A" HOLE & ITEM-QTY WAS 20; RELOCATED "B" HOLE; ADDED "L" & "M" HOLES & ITEM 3.	6/23/64	X2	JL		WJ
	Y3	(B) 4 (K) DETAILS REDESIGNED; (6) "E" HOLES RELOCATED (3); "K" DETAILS RELOCATED	8/19/64	X3	SRG		WJ
CB	X4	5 3/8 DIM WAS 7 1/8; "N" HOLES WERE "C"; "C" HOLE QTY WAS 5.	9/25/64	X4	JL	J.M.	WJ
	X5	7 1/2 DIM WAS 7 3/4	10-1-64	X5	SRG		WJ
A7,8	X6	ADDED "A" HOLES; "A" HOLE QTY WAS 26	11/5/64	X6	JL	J.M.	WJ
D7, B9	X7	"C" HOLE QTY WAS (3); "N" HOLE QTY WAS (2)	12/8/64	X7	JL	J.M.	WJ
C10	X8	2 1/16 DIM. WAS 1 1/16	12/9/64	X8	JL	J.M.	WJ
		ORIGINAL RELEASE FOR PRODUCTION	2-10-65				
BCD9	A	3 "A" DIA. HOLES ADD. TO "K" DETAIL.	3-5-65	13501			

HOLE	DESCRIPTION	REQ'D
A	.221-.224 DIA	27
B	SEE DETAIL	1
C	11/64 DIA	5
D	CUTOUT 3/8 X 7/8	1
E	13/64 DIA	12
F	CUTOUT 1 X 2 1/4	2
G	3/16 DIA	10
H	SEE DETAIL	2
J	1 3/8 DIA	1
K	SEE DETAIL	2
L	9/64 DIA	4
M	.161-.164 DIA	2
N	.144 DIA & C'SINK 82° X .234 DIA	4



- UNLESS OTHERWISE SPECIFIED:
1. USE MATERIAL THICKNESS FOR MAXIMUM RADIUS ON ALL BENDS.
  2. ALL ANGULAR BENDS 90°.
  3. REMOVE ALL BURRS AND SHARP EDGES.
  4. MOUNT INSERTS AFTER FINISHING.

NOTES

1	RTTD-1	A3703
QTY/UNIT	MODEL USED ON	ASSY. NO.
SCALE	CODE	
1:1	A	

REQ'D	ITEM	PART NUMBER	DESCRIPTION	SYMBOL
2	3	NT 129-440-4	NUT, PLAIN, SPLINE GE TYPE	M
4	2	NT 129-632-4	NUT, PLAIN, SPLINE GE TYPE	H
27	1	NT 129-832-4	NUT, PLAIN, SPLINE GE TYPE	A

REF: LD 1618

F. E. EATON		LIST OF MATERIAL	
MATERIAL		THE TECHNICAL MATERIEL CORP.	
.081 THK ALUMINUM		MAMARONECK, NEW YORK	
5052-H32		MAMARONECK, NEW YORK	
FINISH		TITLE	
YELLOW IRIDITE PER S404		CHASSIS, ELECTRICAL-MAIN	

DRAWN	J. W. SHINSKI	DATE	5/25/64	FINAL APPROVAL		DATE	
CHECKED	SRG	DATE	3/16/65				
SELECT. DES.	W. JORDAN	DATE	2/19/65				
DECIMALS	X ± .05	FRACTIONS	± 1/64				
	XX ± .01	ANGLES	± 0° 30'				
	XXX ± .005	TOLERANCES	± 0° 30'				

MS 3839 A

MS 3839 A