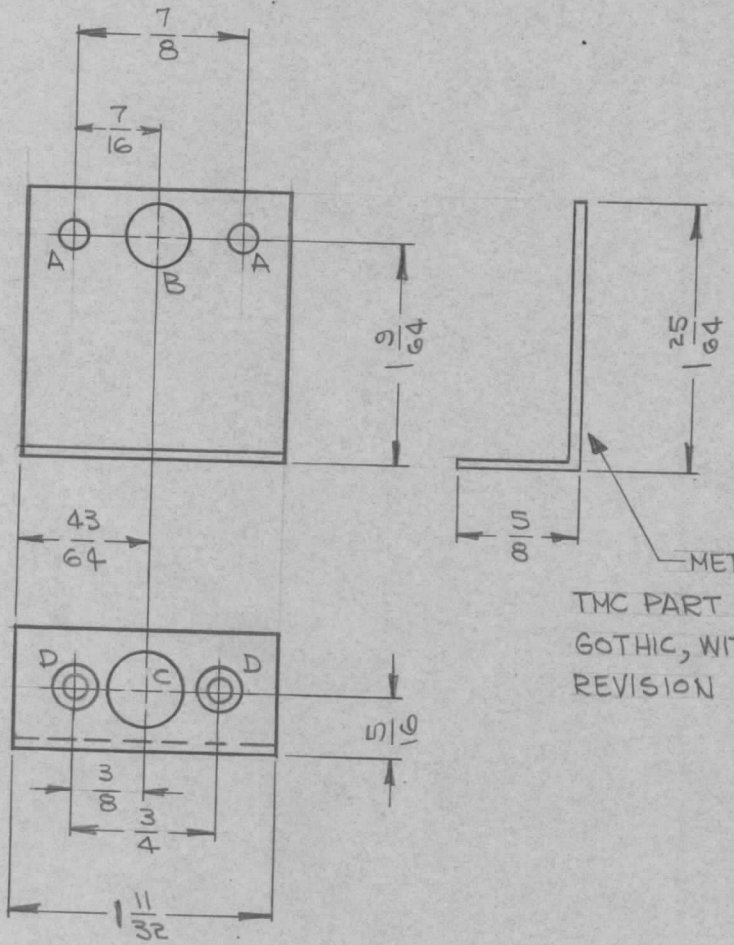


REQ. PER UNIT	USED ON			MS3836 Ø
	MODEL	ASS'Y. NO.	DATE	
1	PFCB-1		9-21-64	



METAL STAMP
TMC PART NO. 1/8 HIGH
GOTHIC, WITH LATEST
REVISION LETTER.

HOLE	DESCRIPTION	REQ.
A	9/64 DIA.	2
B	5/16 DIA.	1
C	3/8 DIA.	1
D	.104 DIA, C'SINK 82° TO .204 DIA.	2

- UNLESS OTHERWISE SPECIFIED:
1. USE MATERIAL THICKNESS FOR MAXIMUM RADIUS ON ALL BENDS
 2. ALL ANGULAR BENDS 90 DEGREES
 3. REMOVE ALL BURRS AND SHARP EDGES

						REQ. ITEM	PART NO.	GELLMAN	DESCRIPTION	SYMBOL	
Ø	ORIGINAL RELEASE FOR PRODUCTION	9-25-64	Ø	2.5.			.064		THE TECHNICAL MATERIEL CORP. MAMARONECK, NEW YORK		
X	EXPER. RELEASE	9-21-64	X	<i>[Signature]</i>			ALUMINUM		BRACKET, MOUNTING COVER		
SYM	DESCRIPTION	DATE	CH. NO.	DRAFTS	CHECKER	ENG. APP.	MATERIAL		BOTTOM COVER		
UNLESS OTHERWISE SPECIFIED DIMENSIONS ARE IN INCHES AND INCLUDE CHEMICALLY APPLIED OR PLATED FINISHES		SCALE		1:1			5052-H32	<i>[Signature]</i>	<i>[Signature]</i>	<i>[Signature]</i>	
DECIMALS .X ± .05 .XX ± .01 .XXX ± .005	TOLERANCES	FRACTIONS ± 1/64 ANGLES ± 0° 30'	CODE	A			TYPE & TEMPER	HEAT TREAT. SPEC.	DRAWN	CHECKED	FINAL APPROVAL
							5404 YELLOW IRIDITE		<i>[Signature]</i>		MS3836 Ø
							FINISH & SPEC. NO.	ELEC. DES. APP.	MECH. DES. APP.		