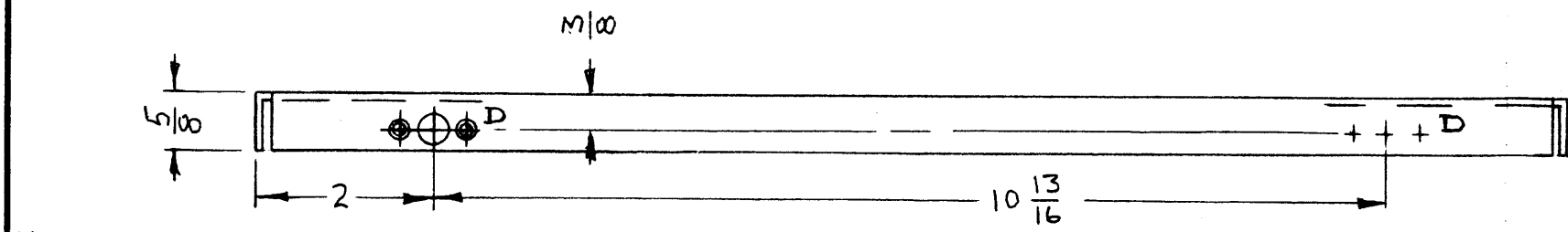


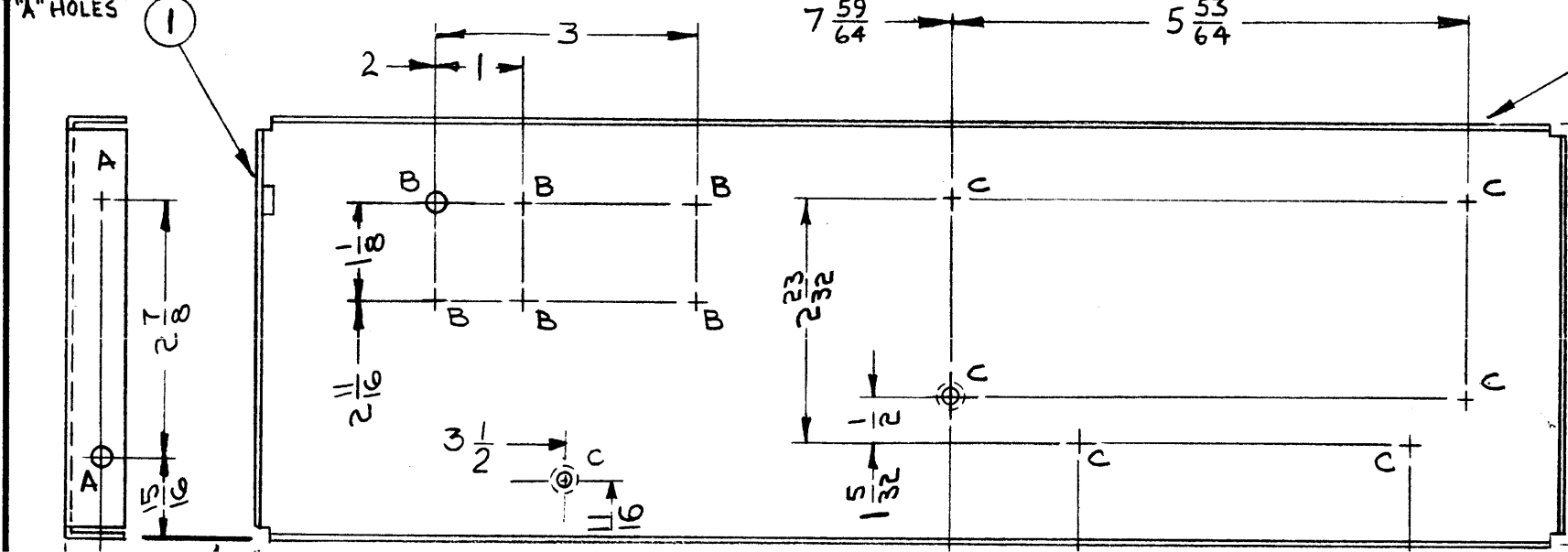
B

REVISIONS

SYM	DESCRIPTION	DATE	E.M.N. NO.	DRAFT	CHKD	APPD
X	REDRAWN & REDESIGNED	9-16-64	X			
Ø	ORIGINAL RELEASE FOR PRODUCTION	9-25-64	Ø	9.2.		
A	"D" DETAIL DELE. FR. BOTTOM VIEW (1 PL.) TOP VIEW ADD.	2-12-65	13415	9.2.		
B	1" C HOLE ADDED	10/25/65	15014	ZVN		

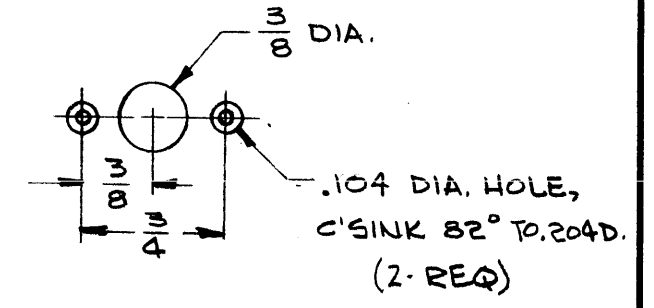
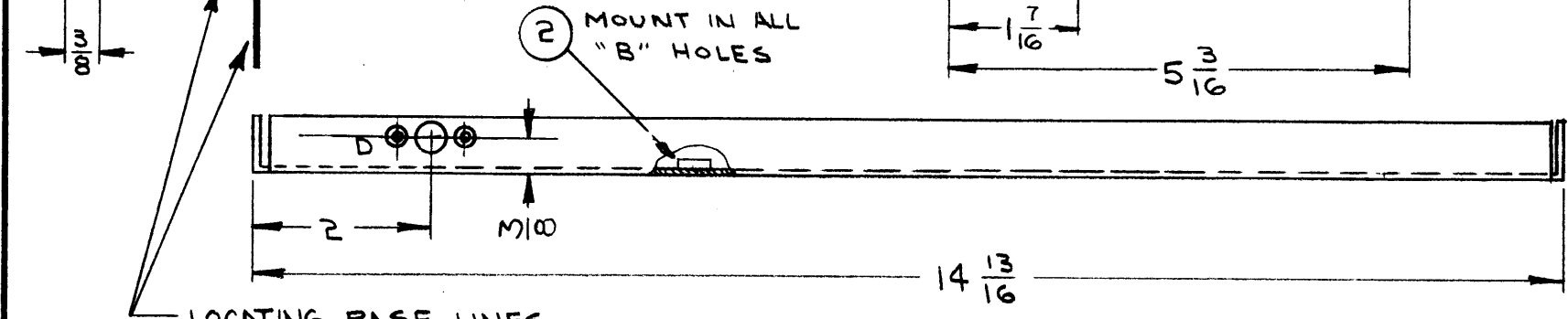


MOUNT IN ALL "A" HOLES



METAL STAMP TMC PART NO. 1/8 HIGH GOTHIC, WITH LATEST REVISION LETTER.

HOLE	DESCRIPTION	REQ
A	.221-.224 DIA.	4
B	.250-.253 DIA.	6
C	.144 DIA. HOLE, C'SINK 82° TO .284 DIA	7
D	SEE DETAIL	3



'D'-DETAIL

LOCATING BASE LINES

UNLESS OTHERWISE SPECIFIED:

1. USE MATERIAL THICKNESS FOR MAXIMUM RADIUS ON ALL BENDS
2. ALL ANGULAR BENDS 90 DEGREES
3. REMOVE ALL BURRS AND SHARP EDGES
4. MOUNT INSERTS AFTER FINISHING

NOTES

1	PFCB-1	
QTY./UNIT	MODEL USED ON	ASS'Y. NO.
SCALE 1:2	CODE A	

THE CONTENTS OF THIS DRAWING ARE THE EXCLUSIVE PROPERTY OF THE TECHNICAL MATERIEL CORP. ITS UNAUTHORIZED USE OR REPRODUCTION IN WHOLE OR IN PART IS STRICTLY FORBIDDEN.

REQ'D.	ITEM	PART NUMBER	DESCRIPTION	SYMBOL
6	2	NT129-1032-4	NUT, PLAIN SPLINE	B
4	1	NT129-832-4	NUT, PLAIN SPLINE	A

GELLMAN LIST OF MATERIAL

MATERIAL	7081 ALUMINUM 5052-H32		
FINISH	5404-YELLOW IRIDITE		
THE TECHNICAL MATERIEL CORP. MAMARONECK, NEW YORK		TITLE	
		PLATE, SIDE-LEFT	
UNLESS OTHERWISE SPECIFIED DIMENSIONS ARE IN INCHES AND INCLUDE CHEMICALLY APPLIED OR PLATED FINISHES	DRAWN	DATE	FINAL APPROVAL
	<i>G. Leman</i>	9-16-64	<i>[Signature]</i>
	CHECKED	DATE	
	<i>[Signature]</i>	9-25-64	
DECIMALS .X ± .05 .XX ± .01 .XXX ± .005	FRACTIONS ± 1/64 ANGLES ± 0° 30'	ELECT. DES.	DATE
TOLERANCES		<i>[Signature]</i>	
		MECH. DES.	DATE
		<i>[Signature]</i>	
SHEET			REV. LTR.
MS3832			B