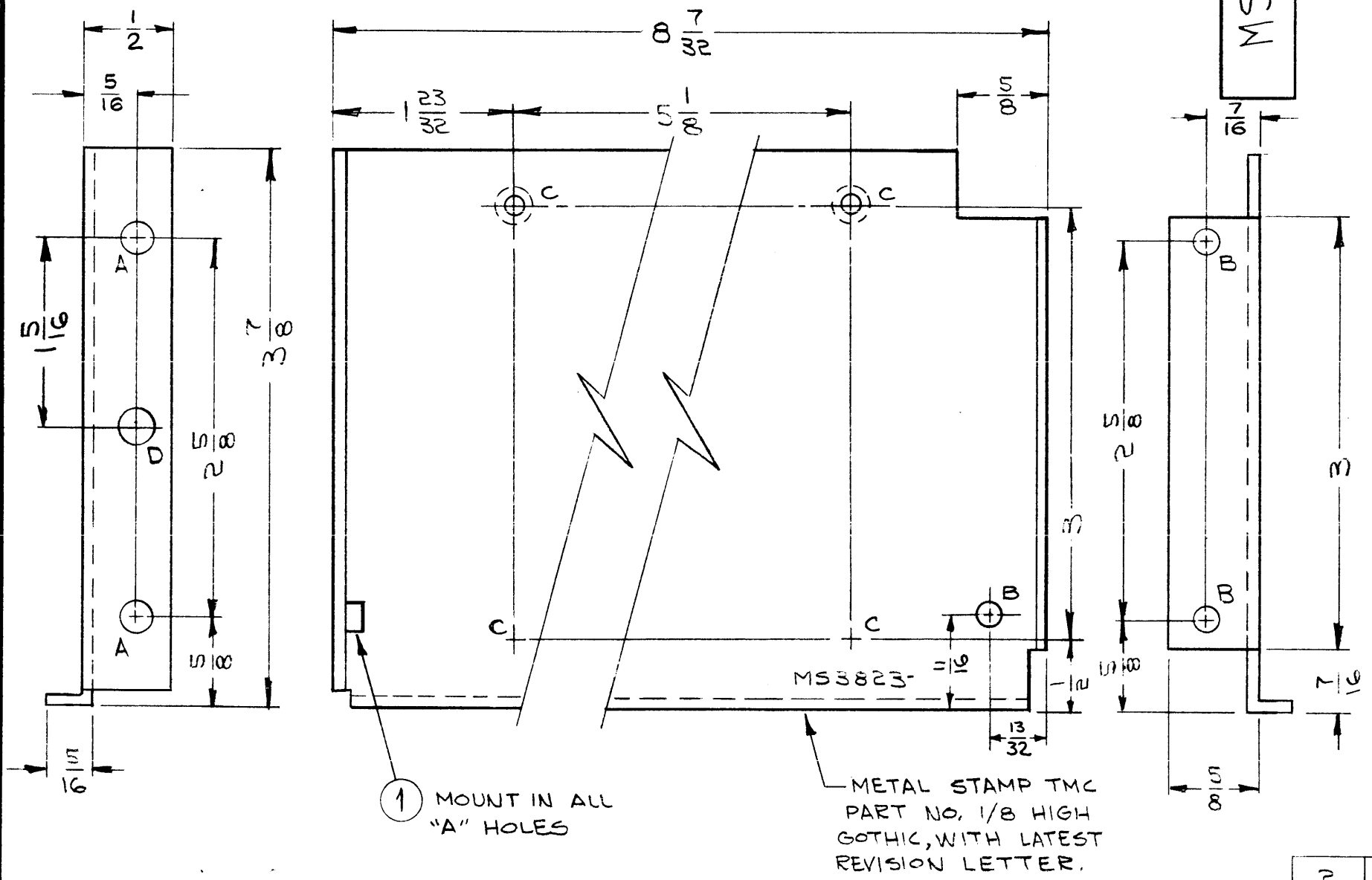


MS3823 B

REVISIONS					
SYM	DESCRIPTION	DATE	E.M.N. NO.	DRAFT	CHKD APPD
X1	REDRAWN & REDESIGNED	9-18-64	X1	<i>[Signature]</i>	
X2	5/8 NOTCH ADDED; 5/16 LIP WAS 1/4	9-21-64	X2	<i>[Signature]</i>	<i>[Signature]</i>
X3	(3) "C" HOLES ADDED	9-23-64	X3	<i>[Signature]</i>	
Ø	ORIGINAL RELEASE FOR PRODUCTION	9-25-64	Ø	<i>[Signature]</i>	
A	ON "B" HOLE ADDED, DIMS. UPDATED	10-9-64	12604	<i>[Signature]</i>	<i>[Signature]</i>
B	(1) "D" HOLE ADDED (LEFT LIP)	2-1-65	13342	<i>[Signature]</i>	<i>[Signature]</i>



HOLE	DESCRIPTION	REQ.
A	.191-.194 DIA	2
B	11/64 DIA	3
C	.120 DIA, C'SINK 82° TO .230 DIA. ON REAR	4
D	1/4 DIA.	1

- UNLESS OTHERWISE SPECIFIED:
1. USE MATERIAL THICKNESS FOR MAXIMUM RADIUS ON ALL BENDS
 2. ALL ANGULAR BENDS 90 DEGREES
 3. REMOVE ALL BURRS AND SHARP EDGES
 4. MOUNT INSERTS AFTER FINISHING

NOTES

METAL STAMP TMC
PART NO. 1/8 HIGH
GOTHIC, WITH LATEST
REVISION LETTER.

2	1	NT129-632-4	NUT, PLAIN SPLINE	A
REQ'D.	ITEM	PART NUMBER	DESCRIPTION	SYMBOL

GELLMAN LIST OF MATERIAL

MATERIAL	.081 ALUMINUM 5052-H32	THE TECHNICAL MATERIEL CORP. MAMARONECK, NEW YORK
FINISH	5404-YELLOW IRIDITE	TITLE PLATE, DOPPLER RIGHT SIDE

1	PFCB-1	
Q'TY./UNIT	MODEL USED ON	ASS'Y. NO.
SCALE	CODE	
1:1	A	

THE CONTENTS OF THIS DRAWING ARE THE EXCLUSIVE PROPERTY OF THE TECHNICAL MATERIEL CORP. ITS UNAUTHORIZED USE OR REPRODUCTION IN WHOLE OR IN PART IS STRICTLY FORBIDDEN.

UNLESS OTHERWISE SPECIFIED DIMENSIONS ARE IN INCHES AND INCLUDE CHEMICALLY APPLIED OR PLATED FINISHES		DRAWN <i>[Signature]</i>	DATE 9-18-64	FINAL APPROVAL <i>[Signature]</i>	DATE
DECIMALS .X ± .05 .XX ± .01 .XXX ± .005		CHECKED <i>[Signature]</i>	DATE 9-25-64	MS3823 B	
FRACTIONS ± 1/64 ANGLES ± 0° 30'		ELECT. DES. <i>[Signature]</i>	DATE	SHEET	
TOLERANCES		MECH. DES.	DATE	REV. LTR.	