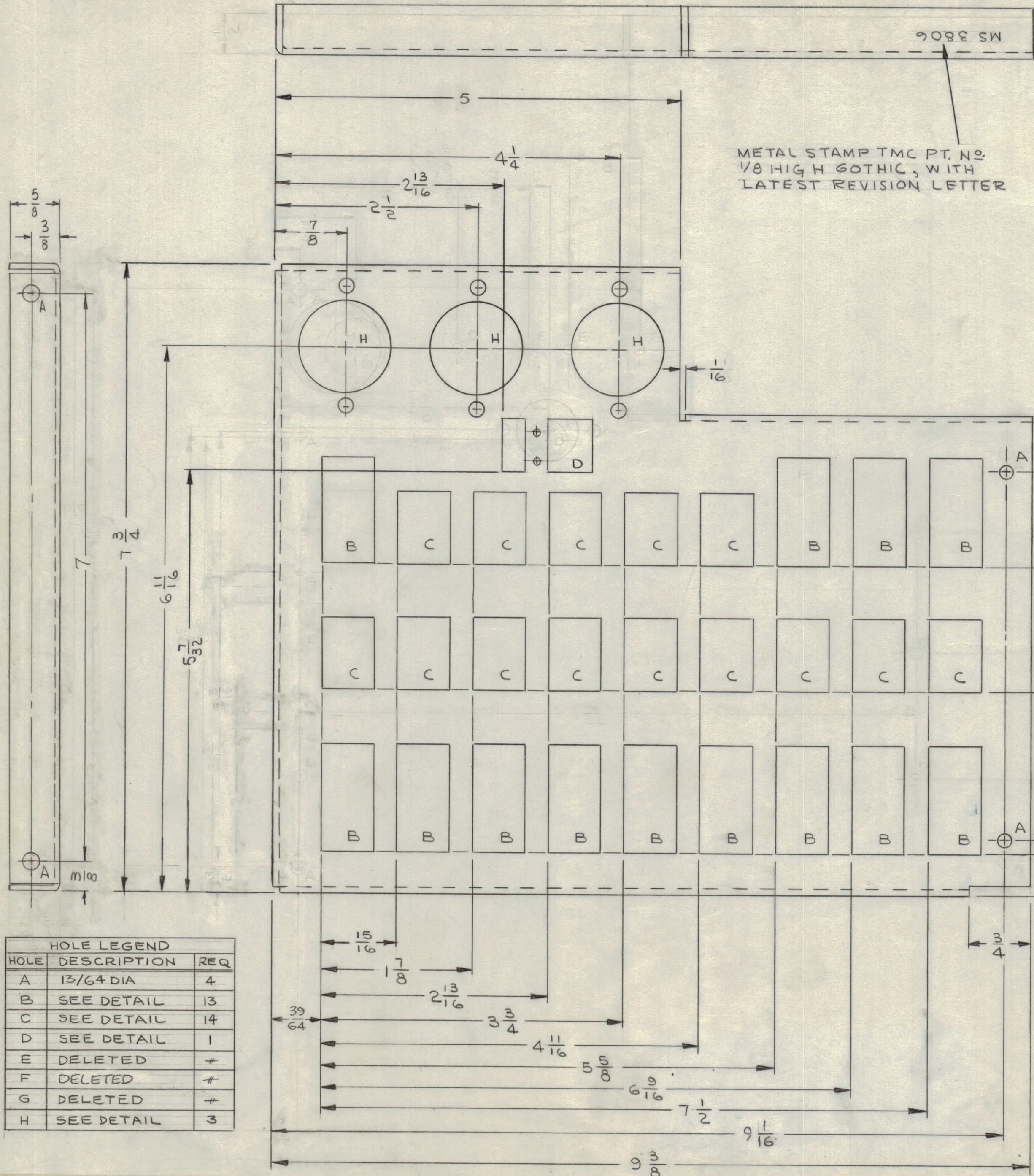
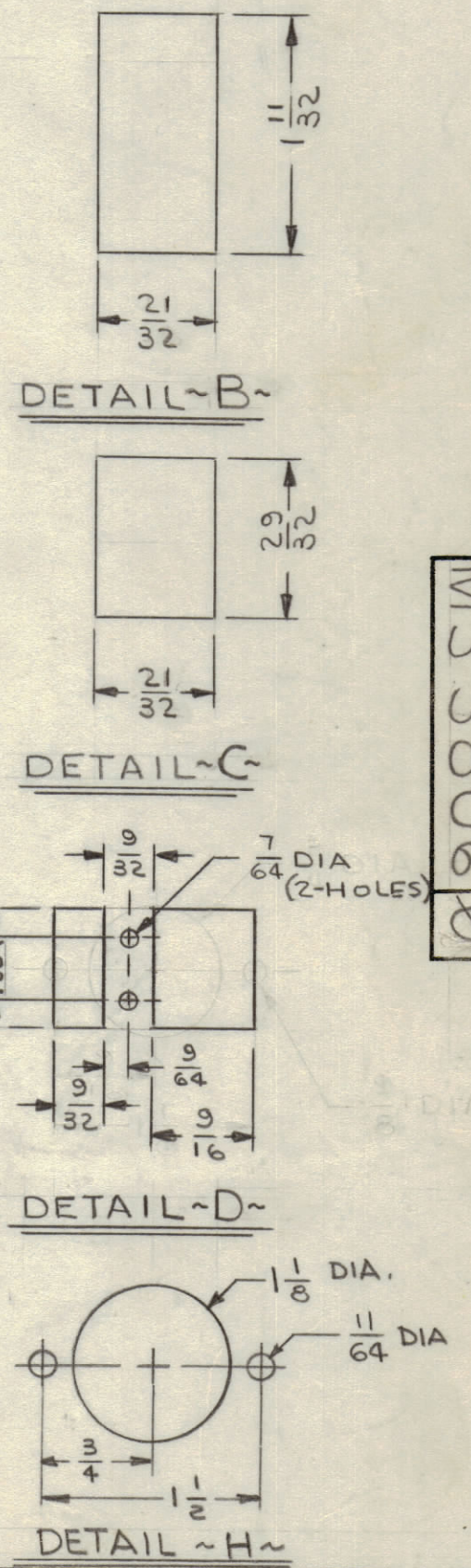


REVISIONS						
ZONE	SYM	DESCRIPTION	DATE	E.M.N. NO.	DRAFT	CHKD APPD
	X	EXPERIMENTAL RELEASE	5/13/64	X	JL	
	X1	ADDED "D", "E" & "F" HOLES; "C" REQ'D WAS 15.	6/8/64	X1	JL	W.J.
EG	X2	ADDED "B" & "C" CUTOUT	6/17/64	X2	JL	W.J.
	X3	ADDED "G" HOLES	6/29/64	X3	JL	JM
X	X4	(3) "H" HOLES ADDED, (4) "E" HOLES 9/64 DIA DELETED (1) "B" HOLE RELOCATED; DIM 3-3/16 ADDED	8-18-64	X4	JL	W.J.
	X5	RELOCATED (2) "A" HOLES; REVISED ALL FLANGES; 5 9/8 WAS 5 3/4; 6 1/16 WAS 6 3/4.	9/25/64	X5	JL	JM W.J.
DG, EG, FG, CG	X6	LIP ADDED, 2 "A" HOLES DELETED.	10-1-64	X6	SRG	J.M.
F5	X7	REVISED "D" DETAIL	12/1/64	X7	JL	J.M. W.J.
	Ø	ORIGINAL RELEASE FOR PRODUCTION	2-10-65	Ø	JL	J.M.



HOLE LEGEND		
HOLE	DESCRIPTION	REQ
A	13/64 DIA	4
B	SEE DETAIL	13
C	SEE DETAIL	14
D	SEE DETAIL	1
E	DELETED	#
F	DELETED	#
G	DELETED	#
H	SEE DETAIL	3



- UNLESS OTHERWISE SPECIFIED:
1. USE MATERIAL THICKNESS FOR MAXIMUM RADIUS ON ALL BENDS
  2. ALL ANGULAR BENDS 90 DEGREES
  3. REMOVE ALL BURRS AND SHARP EDGES
  4. MOUNT INSERTS AFTER FINISHING

NOTES

1	RTTD-1	A3704
Q'TY./UNIT	MODEL USED ON	ASS'Y. NO.
SCALE 1:1	CODE A	
THE CONTENTS OF THIS DRAWING ARE THE EXCLUSIVE PROPERTY OF THE TECHNICAL MATERIEL CORP. ITS UNAUTHORIZED USE OR REPRODUCTION IN WHOLE OR IN PART IS STRICTLY FORBIDDEN.		

REF: LD1616

REQ'D.	ITEM	PART NUMBER	DESCRIPTION	SYMBOL
F. E. EATON LIST OF MATERIAL				
MATERIAL		THE TECHNICAL MATERIEL CORP.		
.081 THK ALUMINUM		MAMARONECK, NEW YORK		
5052-H32		TITLE		
FINISH		PLATE, MOUNTING, RELAY		
YELLOW IRIDITE PER S404		DRAWN		
		J. LESHINSKI		
		DATE		
		5/13/64		
		CHECKED		
		DATE		
		2/9/65		
		ELECT. DES.		
		DATE		
		2/9/65		
		MECH. DES.		
		DATE		
		2/8/65		
		SHEET		
		MS 3806		
		REV. LTR.		

MS 3806