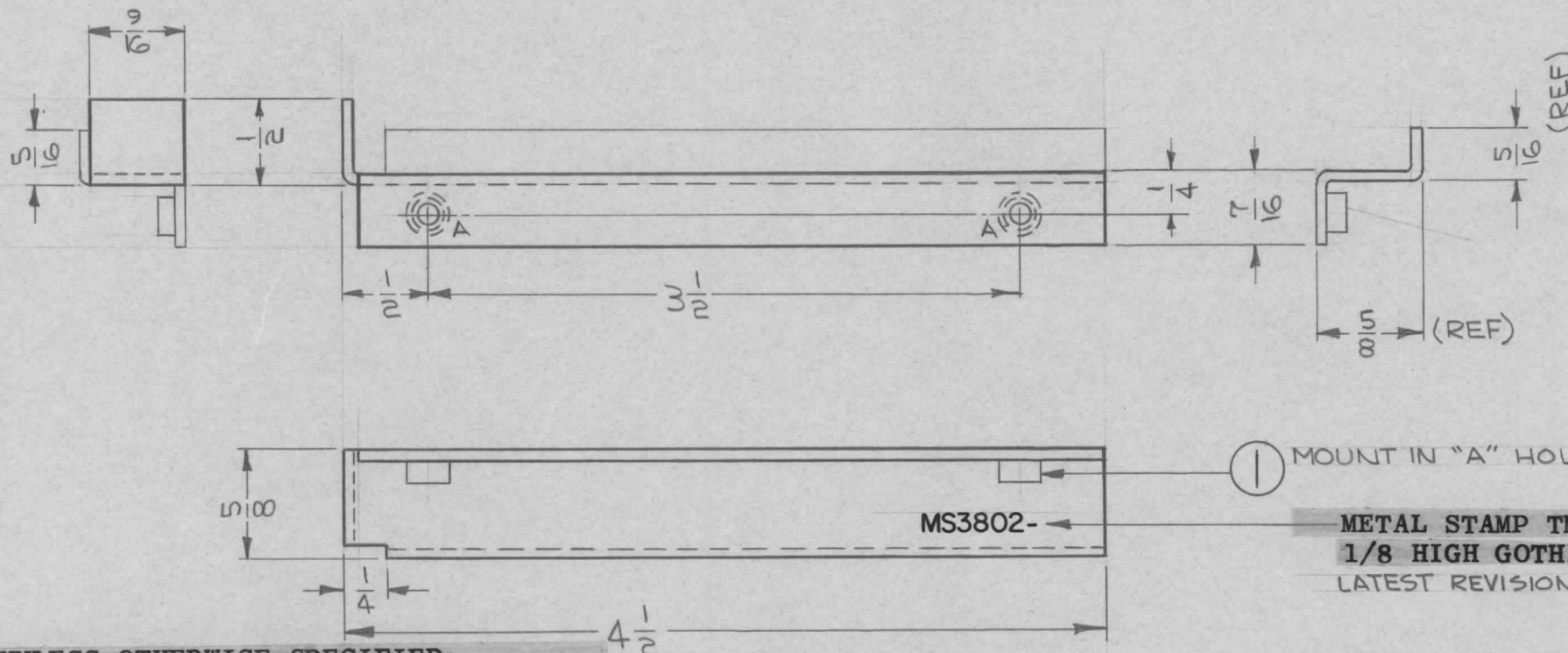


HOLE	DESCRIPTION	REQ.
A	.161 - .164 DIA	2

REQ. PER UNIT	USED ON		
	MODEL	ASS'Y. NO.	DATE
1	SBS-74	A2887	5-8-64

MS3802  $\emptyset$



① MOUNT IN "A" HOLES.

METAL STAMP TMC PART NO. 1/8 HIGH GOTHIC, WITH LATEST REVISION LETTER.

- UNLESS OTHERWISE SPECIFIED:
1. USE MATERIAL THICKNESS FOR MAXIMUM RADIUS ON ALL BENDS.
  2. ALL ANGULAR BENDS 90°.
  3. REMOVE ALL BURRS AND SHARP EDGES.
  4. MOUNT INSERTS AFTER FINISHING.

SYM	DESCRIPTION	DATE	CH. NO.	DRAFTS	CHECKER	ENG. APP.	REQ. ITEM	PART NO.	DESCRIPTION	SYMBOL			
							2	1	NT129-440-4	NUT, ROUND, SWAGE TYPE	A		
									.064 THK STOCK SIZE	THE TECHNICAL MATERIEL CORP. MAMARONECK, NEW YORK			
									ALUMINUM MATERIAL	BRACKET, MOUNTING-RIGHT SIDE			
$\emptyset$	ORIGINAL RELEASE	11/1/65							5052-H32	<i>J. J. Green</i>	<i>J. B.</i>	<i>R. H. King 11/30/65</i>	
									TYPE & TEMPER	HEAT TREAT. SPEC.	DRAWN	CHECKED	FINAL APPROVAL
									S404, YELLOW IRIDITE		<i>J. B.</i>		MS3802 $\emptyset$
									FINISH & SPEC. NO.	ELEC. DES. APP.	MECH. DES. APP.		

UNLESS OTHERWISE SPECIFIED DIMENSIONS ARE IN INCHES AND INCLUDE CHEMICALLY APPLIED OR PLATED FINISHES

DECIMALS  
.X  $\pm$  .05  
.XX  $\pm$  .01  
.XXX  $\pm$  .005

FRACTIONS  
 $\pm$  1/64  
ANGLES  
 $\pm$  0° 30'

TOLERANCES

CODE  
A