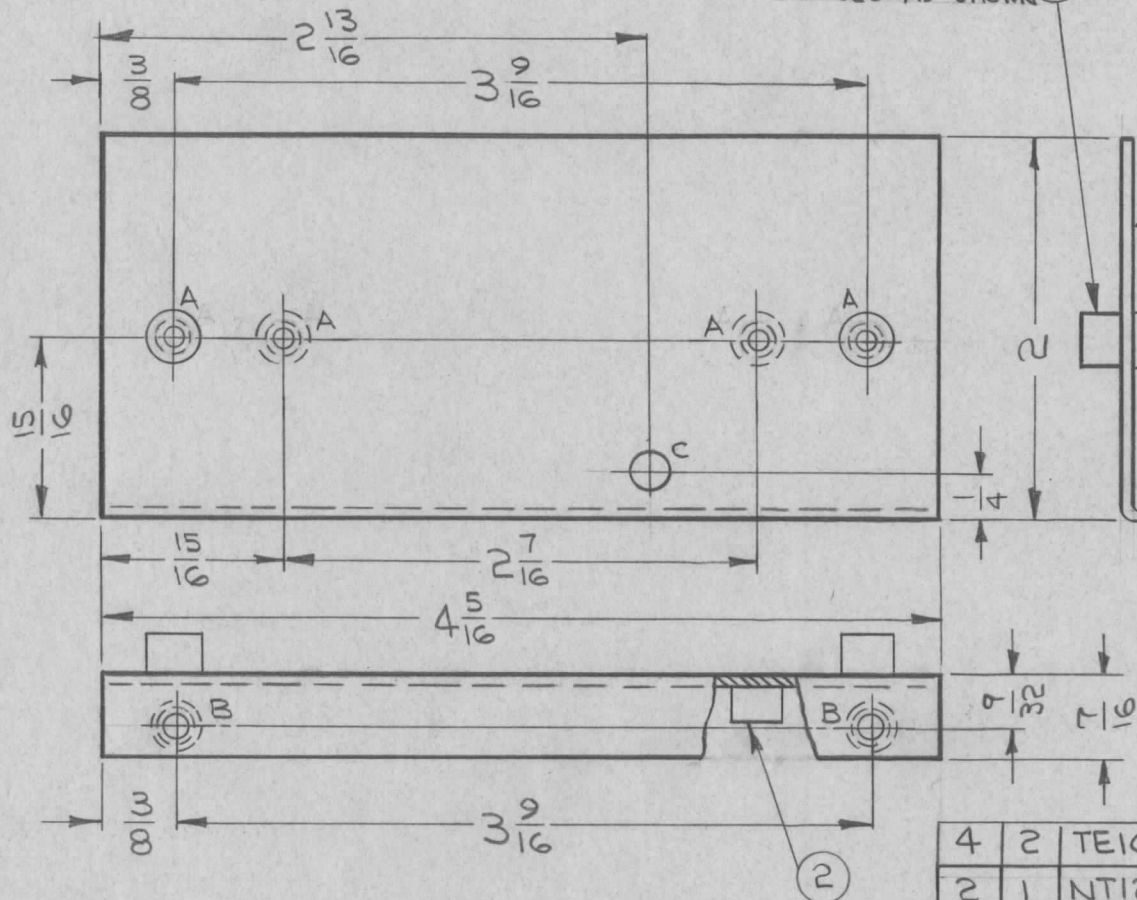


HOLE	DESCRIPTION	REQ
A	.189 DIA.	4
B	.191-.194 DIA.	2
C	3/16 DIA	1

REQ. PER UNIT	USED ON			MS3799 \emptyset
	MODEL	ASS'Y. NO.	DATE	
2	SBS-7	A2890 A2891	5-7-64	

MOUNT IN "A" HOLES AS SHOWN (2)



METAL STAMP TMC PART NO 1/8 HIGH GOTHIC WITH LATEST REVISION LETTER.

MOUNT IN ALL "B" HOLES (1)

UNLESS OTHERWISE SPECIFIED:

1. USE MATERIAL THICKNESS FOR MAXIMUM RADIUS ON ALL BENDS.
2. ALL ANGULAR BENDS 90°.
3. REMOVE ALL BURRS AND SHARP EDGES.
4. MOUNT INSERTS AFTER FINISHING.

REQ.	ITEM	PART NO.	DESCRIPTION	SYMBOL
4	2	TE108-1	STANDOFF, RIVET TYPE	A
2	1	NT129-632-4	NUT, ROUND, SWAGE TYPE	B

\emptyset	ORIGINAL RELEASE	11/1/65				
X1	ITEM (2) # "C" HOLE ADDED	5-18-64	2	G. Jansen		SD
X	EXPER. RELEASE	5-7-64	1	G. Jansen		
SYM	DESCRIPTION	DATE	CH. NO.	DRAFTS	CHECKER	ENG. APP.
UNLESS OTHERWISE SPECIFIED DIMENSIONS ARE IN INCHES AND INCLUDE CHEMICALLY APPLIED OR PLATED FINISHES		SCALE 1:1				
DECIMALS .X \pm .05 .XX \pm .01 .XXX \pm .005	TOLERANCES	FRACTIONS \pm 1/64 ANGLES \pm 0° 30'	CODE A			

.064 THK		THE TECHNICAL MATERIEL CORP. MAMARONECK. NEW YORK		
STOCK SIZE		SHIELD, AUDIO AMP.		
ALUMINUM				
MATERIAL				
5052-H32		G. Jansen	JPB	10/30/65
TYPE & TEMPER	HEAT TREAT. SPEC.	DRAWN	CHECKED	FINAL APPROVAL
S404, YELLOW IRIDITE		SD	J.P.	MS3799 \emptyset
FINISH & SPEC. NO.		ELEC. DES. APP.	MECH. DES. APP.	