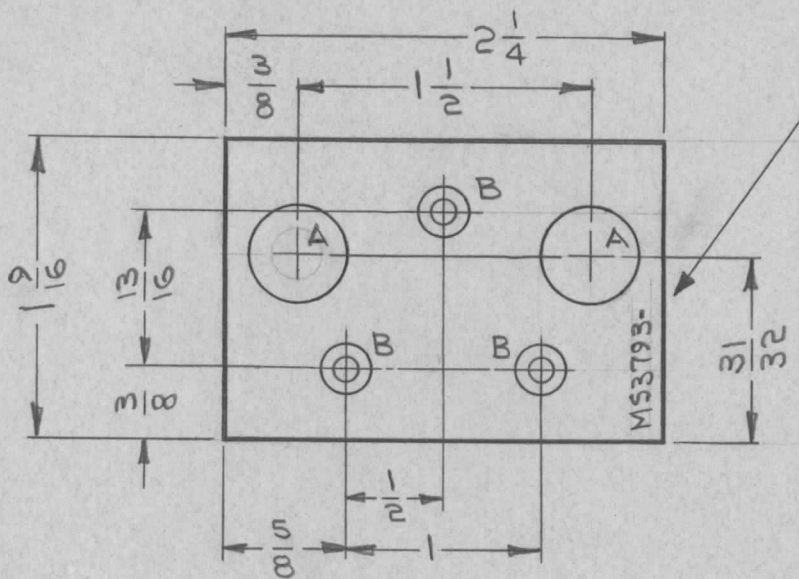


REQ. PER UNIT	USED ON			MS3793 ϕ
	MODEL	ASS'Y. NO.	DATE	
1	SBS-7	A2888	5-20-64	



METAL STAMP TMC PART NO.
 1/8 HIGH GOTHIC, WITH
 LATEST REVISION LETTER.

UNLESS OTHERWISE SPECIFIED:

1. USE MATERIAL THICKNESS FOR MAXIMUM RADIUS ON ALL BENDS.
2. ALL ANGULAR BENDS 90°.
3. REMOVE ALL BURRS AND SHARP EDGES.

HOLE	DESCRIPTION	REQ.
A	1/2 DIA.	2
B	.120 DIA. HOLE, C'SINK 82° TO .230 DIA	3

REF: LDI543 (1)

REQ. ITEM	PART NO.	DESCRIPTION	SYMBOL
	.051 THICK	THE TECHNICAL MATERIEL CORP. MAMARONECK, NEW YORK	
	STOCK SIZE	PLATE, MOUNTING, COMPONENT	
	ALUMINUM		
	MATERIAL		
	5052-H32	—	Eq. Jansen
	TYPE & TEMPER	HEAT TREAT. SPEC.	DRAWN
	S404 YELLOW IRIDITE		CHECKED
	FINISH & SPEC. NO.	ELEC. DES. APP.	MECH. DES. APP.
			MS3793 ϕ

ORIGINAL RELEASE FOR PRODUCTION

XI COMPLETELY REDRAWN

UNLESS OTHERWISE SPECIFIED
 DIMENSIONS ARE IN INCHES AND INCLUDE
 CHEMICALLY APPLIED OR PLATED FINISHES

SCALE 1:1

DECIMALS
 .X ± .05
 .XX ± .01
 .XXX ± .005

FRACTIONS
 ± 1/64
 ANGLES
 ± 0° 30'

TOLERANCES

CODE
 A

9-16-64 ϕ P.L.

5-20-64 2 G. Jansen

DATE CH. NO. DRAFTS CHECKER ENG. APP.

DATE CH. NO. DRAFTS CHECKER ENG. APP.

DATE CH. NO. DRAFTS CHECKER ENG. APP.