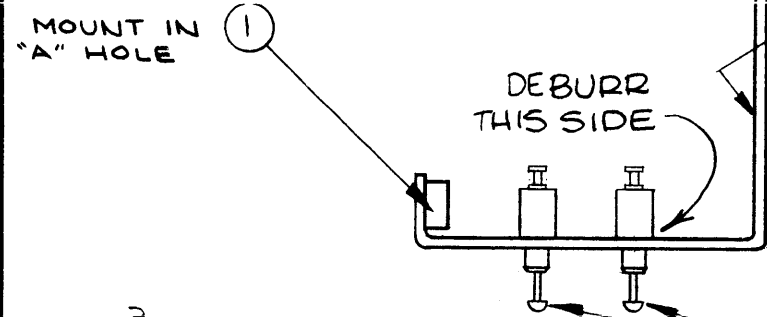
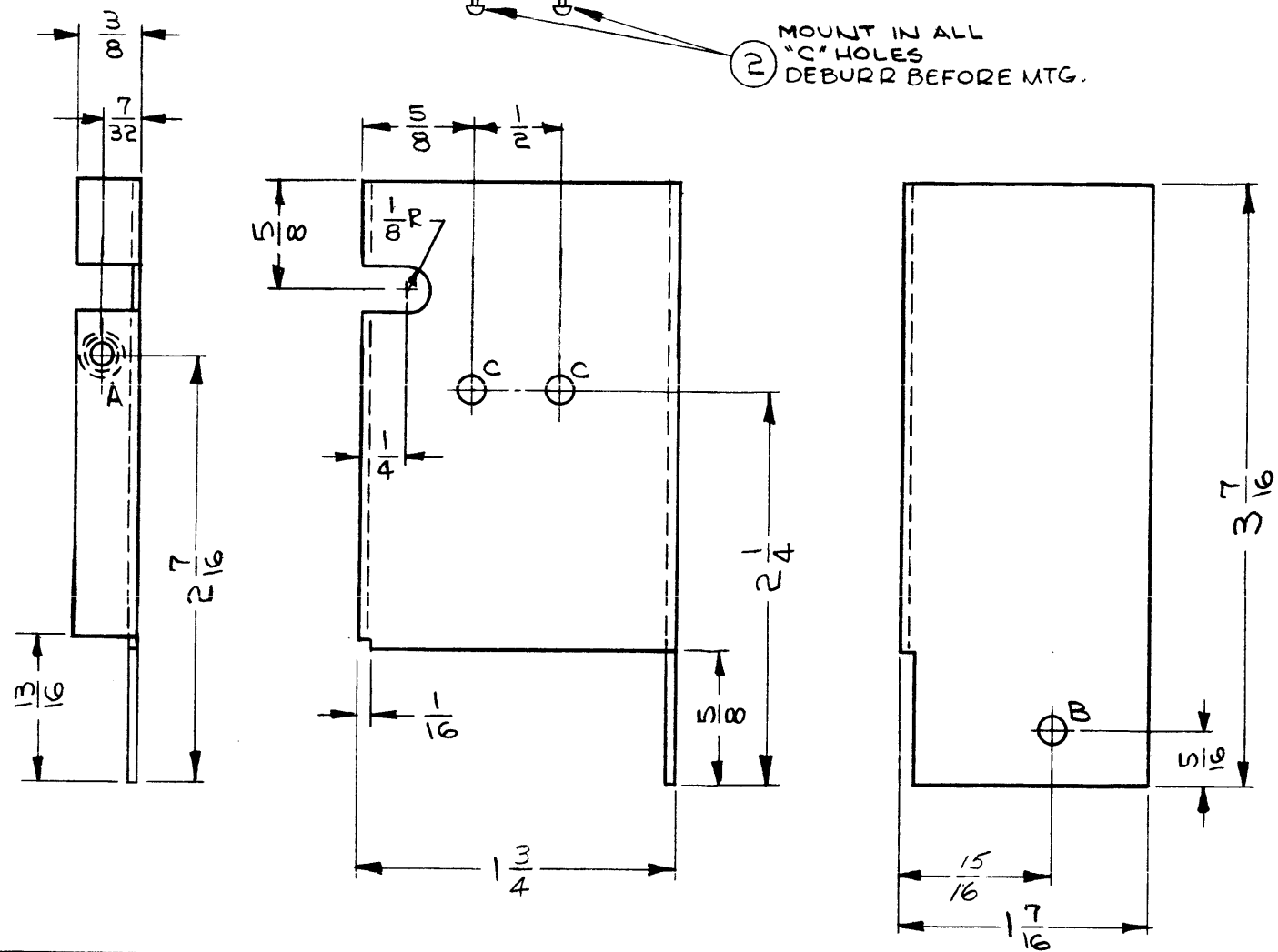


METAL STAND THE PART NO. 1/8
HIGH GOTHIC ON REAR, WITH LATEST
REVISION LETTER.



② MOUNT IN ALL
"C" HOLES
DEBURR BEFORE MTG.



MS3789

REVISIONS					
SYM	DESCRIPTION	DATE	E.M.N. NO.	DRAFT	CHKD APPD
X	EXPER. RELEASE	4-29-64	1	<i>[Signature]</i>	<i>[Signature]</i>
X1	(2) "C" HOLES DELETED; (1) SLOT ADDED; DIMS UPDATED	7-8-64	2	<i>[Signature]</i>	<i>[Signature]</i>
X2	1-3/4 WAS 1-13/16 AND 15/16 WAS 7/8, ADD NOTE TO "C"	9/9/65	3	<i>[Signature]</i>	<i>[Signature]</i>
Ø	ORIGINAL RELEASE FOR PRD	11/1/65	Ø	<i>[Signature]</i>	<i>[Signature]</i>

LEGEND		
HOLE	DESCRIPTION	REQ.
A	.161-.164 DIA	1
B	5/32 DIA.	1
C	.156-.160 DIA. (DEBURR ONE EDGE OF HOLE)	2

- UNLESS OTHERWISE SPECIFIED:**
1. USE MATERIAL THICKNESS FOR MAXIMUM RADIUS ON ALL BENDS.
 2. ALL ANGULAR BENDS 90°.
 3. REMOVE ALL BURRS AND SHARP EDGES.
 4. MOUNT INSERTS AFTER FINISHING.

NOTES

1	SBS-7	A2873
Q'TY./UNIT	MODEL USED ON	ASS'Y. NO.
SCALE 1:1	CODE A	

THE CONTENTS OF THIS DRAWING ARE THE EXCLUSIVE PROPERTY OF THE TECHNICAL MATERIEL CORP. ITS UNAUTHORIZED USE OR REPRODUCTION IN WHOLE OR IN PART IS STRICTLY FORBIDDEN.

REQ'D.	ITEM	PART NUMBER	DESCRIPTION	SYMBOL
2	2	TE169-2	FEED-THRU, TEFLON, PRESS FIT	C
1	1	NT129-440-3	NUT, ROUND, SWAGE TYPE	A

O. POSE		LIST OF MATERIAL	
MATERIAL .051 THK, ALUMINUM 5052-H32		THE TECHNICAL MATERIEL CORP. MAMARONECK, NEW YORK	
FINISH S404, YELLOW IRIDITE		TITLE SHIELD, R.F.	
UNLESS OTHERWISE SPECIFIED DIMENSIONS ARE IN INCHES AND INCLUDE CHEMICALLY APPLIED OR PLATED FINISHES		DRAWN <i>[Signature]</i> DATE 4-29-64	FINAL APPROVAL <i>[Signature]</i> DATE 10/30/65
DECIMALS .X ± .05 .XX ± .01 .XXX ± .005		CHECKED <i>[Signature]</i> DATE 9/19/65	DATE 10/29/65
FRACTIONS ± 1/64 ANGLES ± 0° 30'		ELECT. DES. <i>[Signature]</i>	MS3789
TOLERANCES		MECH. DES. <i>[Signature]</i>	Ø
		DATE 9-29-65	SHEET
		M/L <i>[Signature]</i>	REV. LTR.