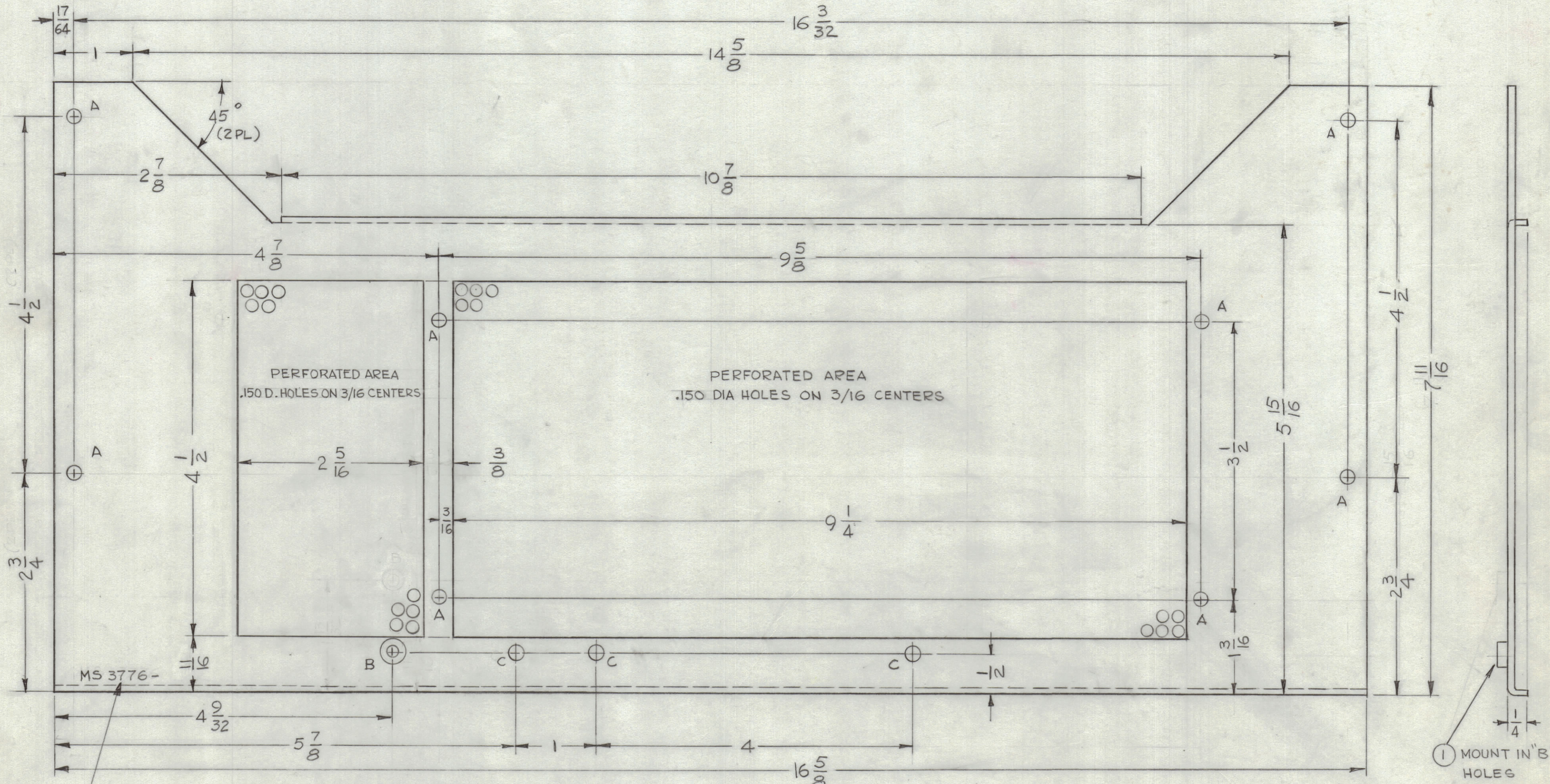


HOLE	DESCRIPTION	REQ.
A	11/64 DIA.	8
B	.221-.224 DIA	1
C	3/16 DIA	3

REVISIONS						
ZONE	SYM	DESCRIPTION	DATE	E.M.N. NO.	DRAFT	CHKD
-	X	EXPERIMENTAL RELEASE	4-21-64	#	G.D.L.	
+	X1	PERFORATED AREA 4 1/2 X 2 5/16 ADDED "B" HOLE RELOCATED	5-22-64	#	G.D.L.	
+	Ø	ORIGINAL RELEASE FOR PRODUCTION	8.11.64	#	JB	



METAL STAMP TMC PART NO. 1/8 HIGH GOTHIC, WITH LATEST REVISION LETTER.

- UNLESS OTHERWISE SPECIFIED:
1. USE MATERIAL THICKNESS FOR MAXIMUM RADIUS ON ALL BENDS.
  2. ALL ANGULAR BENDS 90°.
  3. REMOVE ALL BURRS AND SHARP EDGES.
  4. MOUNT INSERTS AFTER FINISHING.

NOTES

1	HEB-2	
Q'TY./UNIT	MODEL USED ON	ASSY. NO.
SCALE 1:1	CODE A	

THE CONTENTS OF THIS DRAWING ARE THE EXCLUSIVE PROPERTY OF THE TECHNICAL MATERIEL CORP. ITS UNAUTHORIZED USE OR REPRODUCTION IN WHOLE OR IN PART IS STRICTLY FORBIDDEN.

1	1	NT-129-832-4	NUT, ROUND, SWAGE TYPE	B
REQ'D.	ITEM	PART NUMBER	DESCRIPTION	SYMBOL
ANGER LIST OF MATERIAL				
MATERIAL			THE TECHNICAL MATERIEL CORP.	
.081 THK ALUMINUM 5052-H32			MAMARONECK, NEW YORK	
FINISH			TITLE	
S404 IRIDITE 14-2 AL-COAT			COVER, REAR	
UNLESS OTHERWISE SPECIFIED DIMENSIONS ARE IN INCHES AND INCLUDE CHEMICALLY APPLIED OR PLATED FINISHES			DRAWN G.D.L.	DATE 4-17-64
DECIMALS .X ± .05 .XX ± .01 .XXX ± .005			CHECKED @	DATE 7-11-64
FRACTIONS ± 1/64 ANGLES ± 0° 30'			ELECT. DES. Xanger	DATE 7/28/64
TOLERANCES			MECH. DES.	DATE
			MS 3776	Ø
			SHEET	REV. LTR.

MS 3776 Ø

1 MOUNT IN "B" HOLES