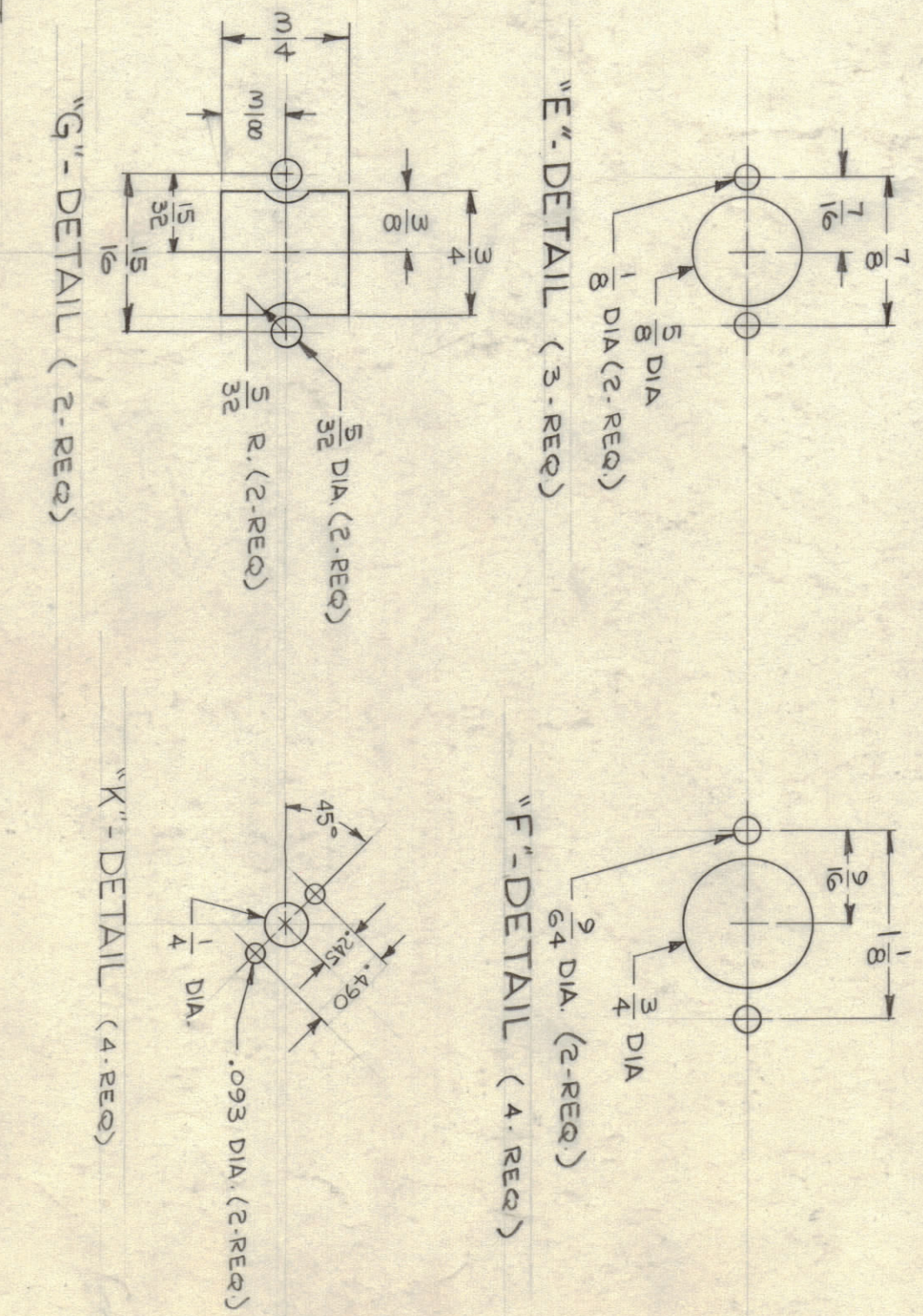
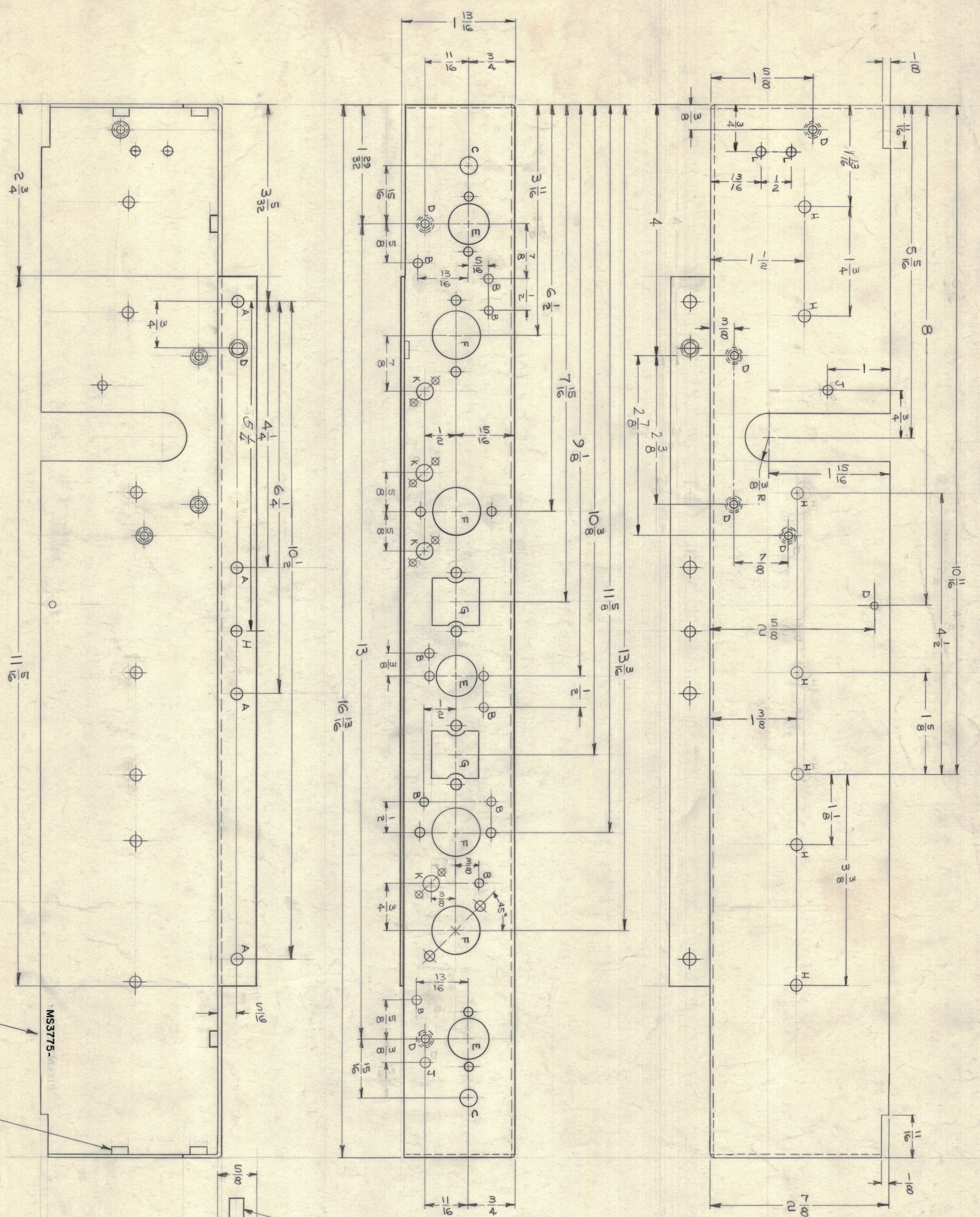


ZONE	SYM	DESCRIPTION	DATE	EMAN NO.	DRAWN	CHECK	APPRO
06	X	EXPER. RELEASE	4-14-64	1			
06	X1	(S) "K" DETAILS WERE (4) "C" HOLES	4-14-64	2			
06	X2	(S) (A) (H) & (J) HOLE ADDED; ITEM 8 WAS 4 REQ	7-5-64	3			
06	X3	(S) (S) 2 "K" HOLES, (S) 3 ADDED (S) 1 (S) 1 (S) 1 (S) 1	11-15-64	4			
06	06	ORIGINAL RELEASE FOR PRODUCTION	11-15-64				
06	06	"K" HOLE ADDED; NOTE: CLAS. RITE	02-24-65	1139	wh		
06	06	"K" HOLE ADDED; NOTE: CLAS. RITE	02-24-65	1139	wh		
06	06	RELOCATE "H" HOLE ON FR & REC. VIEW	2/14/65	20536	GE		

HOLE	DESCRIPTION	REQ
A	.189 DIA.	4
B	1/8 DIA.	8
C	1/4 DIA.	2
D	.191-.194 DIA.	10
E	SEE DETAIL	3
F	SEE DETAIL	4
G	SEE DETAIL	2
H	11/64 DIA.	8
J	9/64 DIA.	2
K	SEE DETAIL	4
L	.158 TO .160	2



METAL STAMP TMC PART NO. 1/8 HIGH GOTHIC, WITH LATEST REVISION LETTER.

UNLESS OTHERWISE SPECIFIED:
 1. USE MATERIAL THICKNESS FOR MAXIMUM RADIIUS ON ALL BENDS.
 2. ALL ANGULAR BENDS 90°.
 3. REMOVE ALL BURNS AND SHARP EDGES.
 4. MOUNT INSERTS AFTER FINISHING.

REF: LD 1518 (4)

QTY	ITEM	DESCRIPTION	SYMBOL
2	3	TE-167-1	L
4	2	TE 108-28	A
9	1	NT 129-632-4	D

LIST OF MATERIAL
 MATERIAL: .064 ALUMINUM
 .5052-H32
 FINISH: S-404, YELLOW IRIDIOTE
 TITLE: CHASSIS, ELECTRICAL, EQUIPMENT
 THE TECHNICAL MATERIEL CORP.
 MANARONCK, NEW YORK

SCALE	MODEL USED ON	ASY. NO.	DATE	BY	CHECKED	APPROVED
1:1	A		12/15/64	MS 3775		

NOTES