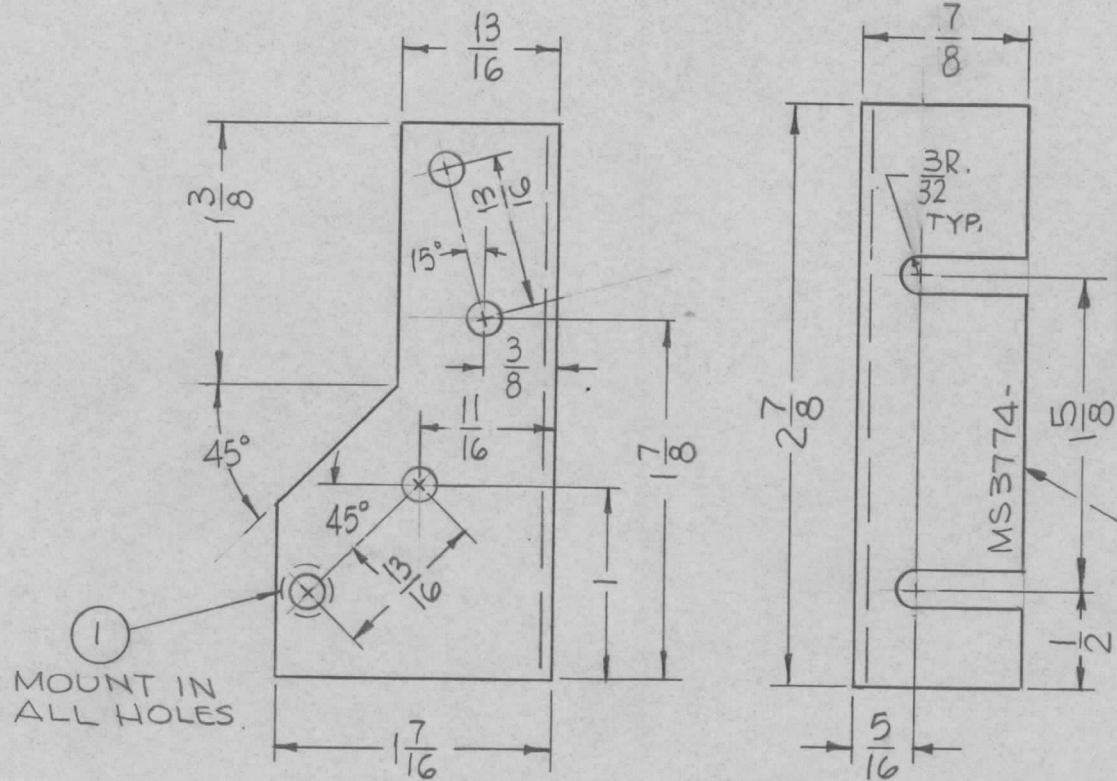


REQ. PER UNIT	USED ON			MS 3774 \emptyset
	MODEL	ASS'Y. NO.	DATE	
1	SWCA-3K		11-18-66	



HOLES:
.161-.164 DIA. (4 REQ.)

- UNLESS OTHERWISE SPECIFIED:
1. USE MATERIAL THICKNESS FOR MAXIMUM RADIUS ON ALL BENDS
 2. ALL ANGULAR BENDS 90 DEGREES
 3. REMOVE ALL BURRS AND SHARP EDGES
 4. MOUNT INSERTS AFTER FINISHING

MARK TMC P/N
1/8" HIGH GOTHIC
W/LATEST REV.
LETTER.

REF. LD1511-

				4	1	NT129-440-4	NUT, PLAIN, SPLINE			
				REQ. ITEM	PART NO.		F. BUDETTI DESCRIPTION			SYMBOL
						.064 THICK		THE TECHNICAL MATERIEL CORP.		
						STOCK SIZE		MAMARONECK, NEW YORK		
						ALUMINUM		BRACKET, MTG. SWITCHES		
						MATERIAL				
						5052-H32				
						TYPE & TEMPER		DRAWN		
						5404 YEL. IRIDITE		CHECKED		
						FINISH & SPEC. NO.		FINAL APPROVAL		
								MS3774 \emptyset		
								ELEC. DES. APP. MECH. DES. APP.		