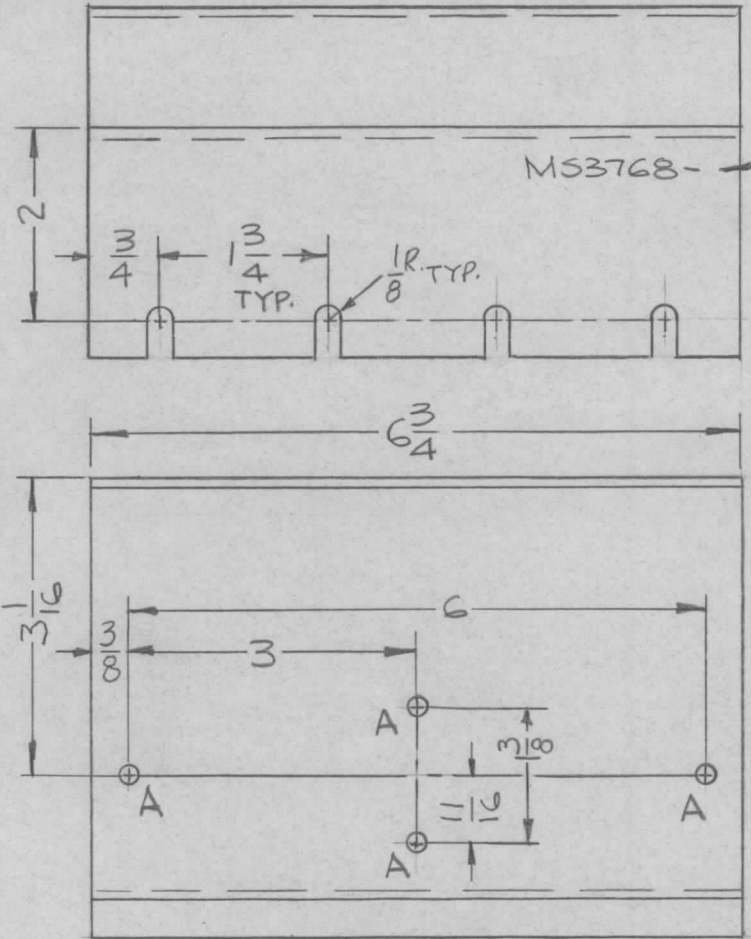


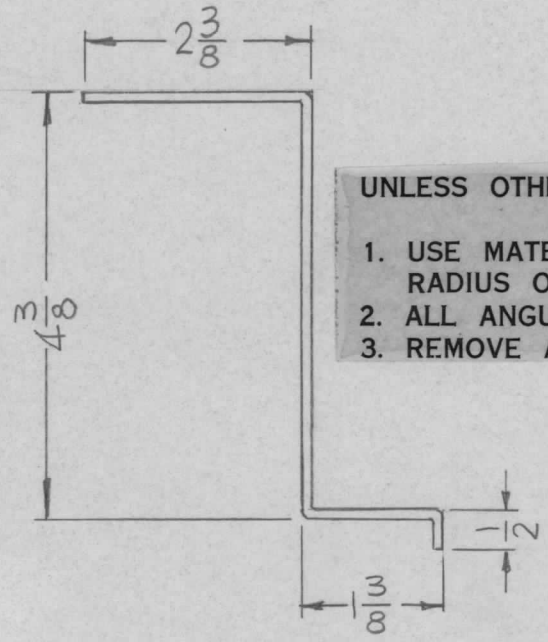
|               |          |            |          |          |
|---------------|----------|------------|----------|----------|
| REQ. PER UNIT | USED ON  |            |          | MS3768 Q |
|               | MODEL    | ASS'Y. NO. | DATE     |          |
|               | RAK110-2 | BMA154     | 11-17-66 |          |



MARK TMC P/N  
1/8" HIGH GOTHIC  
W/LATEST REV.  
LETTER.

HOLES:  
A - 11/64 DIA (4REQ)

- UNLESS OTHERWISE SPECIFIED:
1. USE MATERIAL THICKNESS FOR MAXIMUM RADIUS ON ALL BENDS
  2. ALL ANGULAR BENDS 90 DEGREES
  3. REMOVE ALL BURRS AND SHARP EDGES



| SYM | DESCRIPTION   | DATE                                      | CH. NO.   | DRAFTS | CHECKER | ENG. APP. | REQ. ITEM          | PART NO.          | F. BUDETTI DESCRIPTION                               | SYMBOL          |                |
|-----|---|---|-----------|--------|---------|-----------|--------------------|-------------------|--|-----------------|----------------|
| Q   | ORIGINAL RELEASE FOR PRODUCTION   | 12.1.66                                   | A         | WTD    |         |           | 081 THICK          |                   | THE TECHNICAL MATERIEL CORP.<br>MAMARONECK, NEW YORK |                 |                |
| X   | EXP. RELEASE  | 11-17-66                                  |           |        |         |           | ALUMINUM           |                   | BRACKET, FILTER                                      |                 |                |
|     | UNLESS OTHERWISE SPECIFIED<br>DIMENSIONS ARE IN INCHES AND INCLUDE<br>CHEMICALLY APPLIED OR PLATED FINISHES | SCALE                                     |           |        |         |           | 5052-H32           |                   |  |                 |                |
|     | DECIMALS<br>.X ± .05<br>.XX ± .01<br>.XXX ± .005  | FRACTIONS<br>± 1/64<br>ANGLES<br>± 0° 30' | CODE<br>A |        |         |           | TYPE & TEMPER      | HEAT TREAT. SPEC. | DRAWN  | CHECKED         | FINAL APPROVAL |
|     | TOLERANCES  |   |           |        |         |           | S404 YEL IRIDITE   |                   |  |                 | MS3768 Q       |
|     |   |   |           |        |         |           | FINISH & SPEC. NO. |                   | ELEC. DES. APP.                                      | MECH. DES. APP. |                |