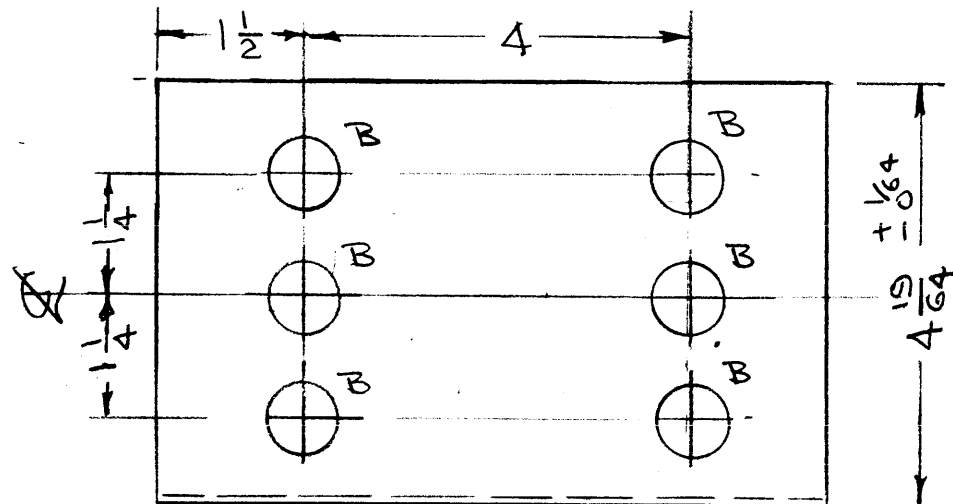
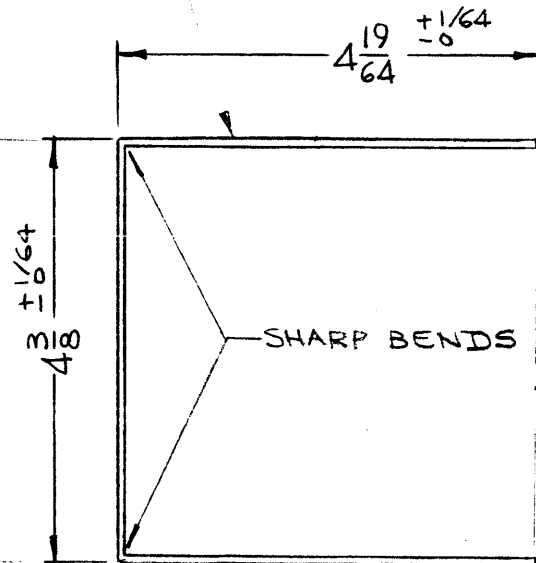
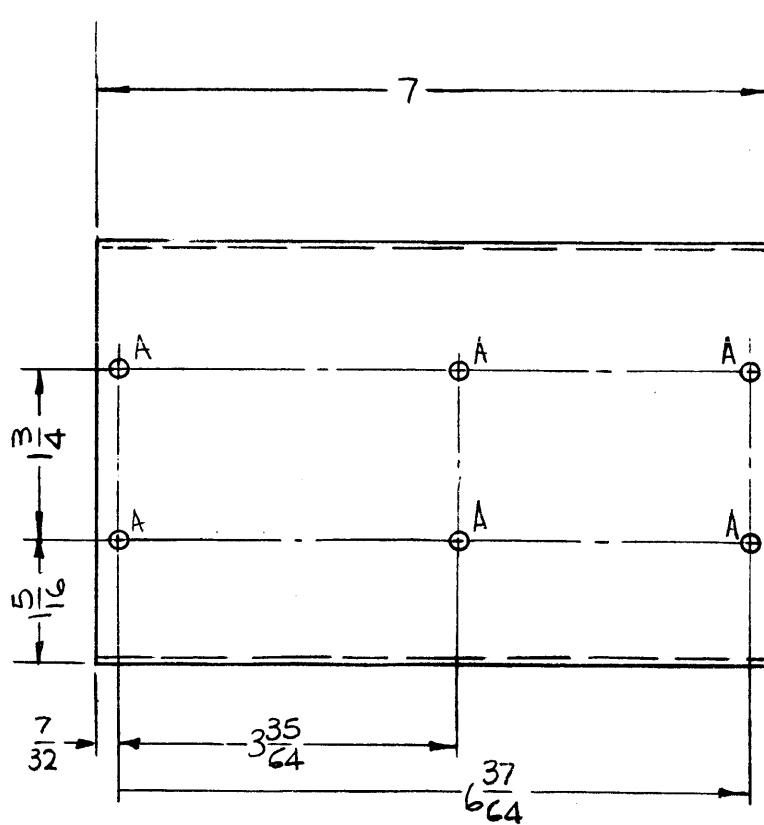


OPPOSITE SIDE SAME



$\pm \frac{1}{64}$   
 $\frac{19}{64}$   
 $4 \frac{19}{64}$

MARK TMC P/N (MS3758-)  
1/8" HIGH GOTHIC W/LATEST  
REV. LETTER



MS3758

REVISIONS					
SYM	DESCRIPTION	DATE	E.M.N. NO.	DRAFT	CHKD APPD
X	EXP. RELEASE	10-10-66	X		
X1	COMPLETELY REVISED	9/12/67	X1		
Ø	ORIGINAL RELEASE FOR PRODUCTION	5/22/69	Ø		

HOLES	DESCRIPTION	REQ.
A	11/64 DIA	6
B	3/4 DIA.	12

UNLESS OTHERWISE SPECIFIED:

1. USE MATERIAL THICKNESS FOR MAXIMUM RADIUS ON ALL BENDS
2. ALL ANGULAR BENDS 90 DEGREES
3. REMOVE ALL BURRS AND SHARP EDGES

NOTES

TFP-2.5K		ASS'Y. NO.
Q'TY./UNIT	MODEL USED ON	
SCALE 2:1	CODE A	S401-451 S401- S401-
THE CONTENTS OF THIS DRAWING ARE THE EXCLUSIVE PROPERTY OF THE TECHNICAL MATERIEL CORP. ITS UNAUTHORIZED USE OR REPRODUCTION IN WHOLE OR IN PART IS STRICTLY FORBIDDEN.		

REQ'D.	ITEM	PART NUMBER	DESCRIPTION	SYMBOL
F. BUDETTI LIST OF MATERIAL				
MATERIAL .051 THICK ALUMINUM 5052-H.32			THE TECHNICAL MATERIEL CORP. MAMARONECK, NEW YORK	
FINISH S404 YEL. IRIDITE			TITLE COVER, BANDSWITCH FILTER	
UNLESS OTHERWISE SPECIFIED DIMENSIONS ARE IN INCHES AND INCLUDE CHEMICALLY APPLIED OR PLATED FINISHES			DRAWN <i>[Signature]</i>	DATE 9-26-66
			CHECKED <i>[Signature]</i>	DATE 10/12/66
			ELECT. DES. <i>[Signature]</i>	DATE
			MECH. DES. <i>[Signature]</i>	DATE 5-22-69
			FINAL APPROVAL <i>[Signature]</i>	
			DATE 5/22/69	
			MS3758	
			Ø	
			SHEET	
			REV. LTR.	