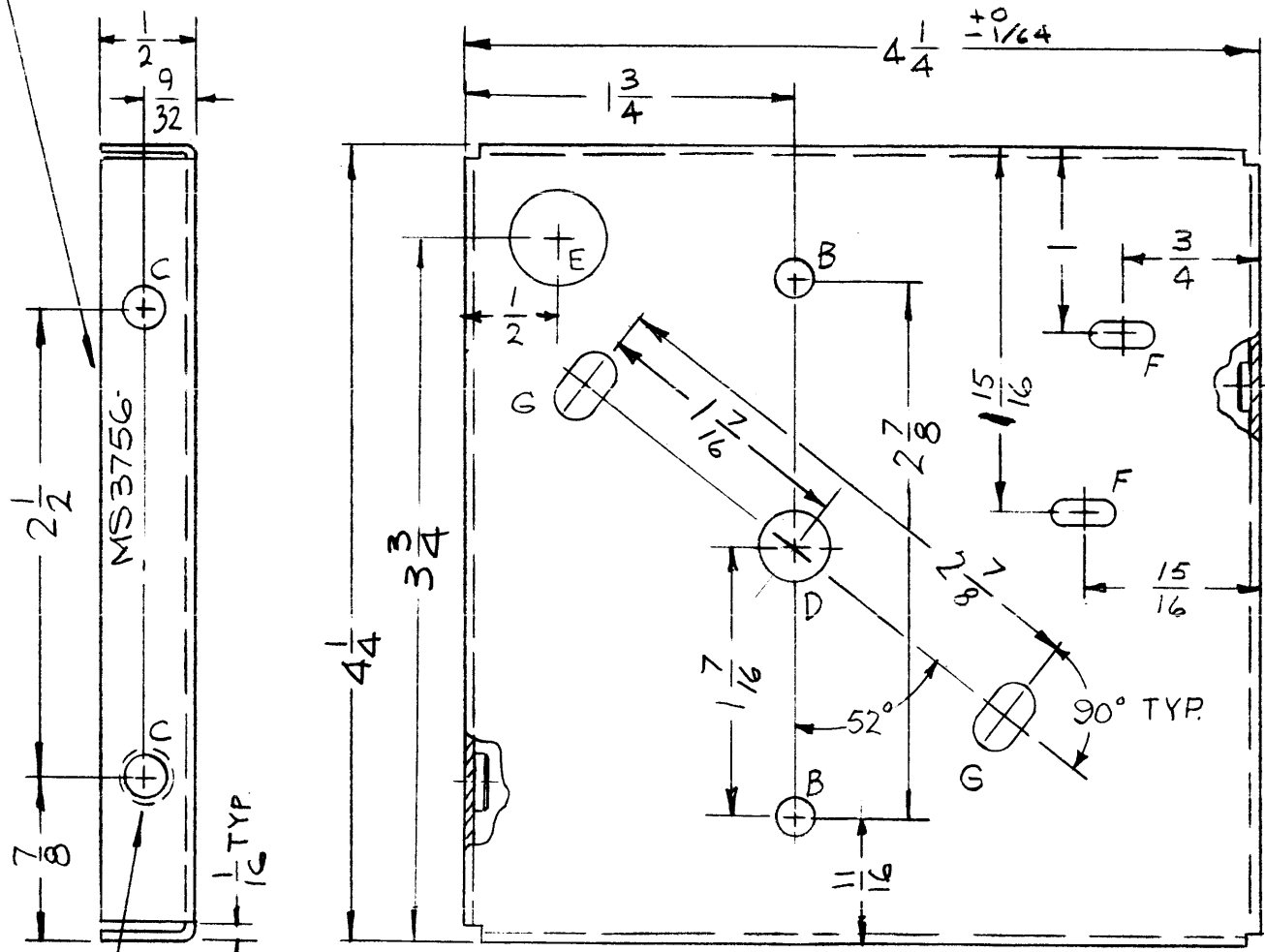
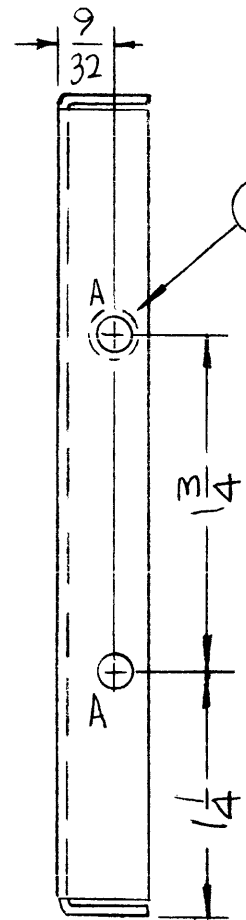


MARK TMC P/N
80-HIGH GOTHIC
W/LATEST REV.
LETTER.



MS3756



① MOUNT IN "A" HOLES

REVISIONS

SYM	DESCRIPTION	DATE	E.M.N. NO.	DRAFT	CHKD	APPD
X	EXP. RELEASE	10-10-66	X	MJD	MJD	RT
XI	ADDED 2 @ "F" & "G" HOLES	10-14-66	C.C.	HS	PO	RT
Ø	ORIGINAL RELEASE FOR PRODUCTION	5/22/69		U	J	

HOLES	DESCRIPTION	REQ.
A	.191-.194 DIA.	2
B	13/64 DIA.	2
C	.221-.224 DIA.	2
D	3/8 DIA.	1
E	33/64 DIA.	1
F	1/8 X 5/16 DIA. SLOT	2
G	7/32 X 3/8 DIA. SLOT	2

② MOUNT IN "C" HOLES.

UNLESS OTHERWISE SPECIFIED:

1. USE MATERIAL THICKNESS FOR MAXIMUM RADIUS ON ALL BENDS
2. ALL ANGULAR BENDS 90 DEGREES
3. REMOVE ALL BURRS AND SHARP EDGES
4. MOUNT INSERTS AFTER FINISHING

NOTES

REQ'D.	ITEM	PART NUMBER	DESCRIPTION	SYMBOL
2	2	NT129-832-3	NUT, PLAIN SPLINE	C
2	1	NT129-632-3	NUT, PLAIN SPLINE	A

F. BUDETTI LIST OF MATERIAL

MATERIAL: .051 THICK ALUMINUM 5052-H 32

FINISH: S404 YEL. IRIDITE

TITLE: PLATE, CENTER, BANDSWITCH FILTER

THE TECHNICAL MATERIEL CORP.
MAMARONECK, NEW YORK

UNLESS OTHERWISE SPECIFIED
DIMENSIONS ARE IN INCHES AND INCLUDE
CHEMICALLY APPLIED OR PLATED FINISHES

DRAWN	DATE	FINAL APPROVAL	DATE
CHECKED	10/10/66	[Signature]	5/22/69
ELECT. DES.	DATE	MS3756	Ø
MECH. DES.	DATE		
	5-22-69		

DECIMALS .X ± .05 .XX ± .01 .XXX ± .005

FRACTIONS ± 1/64 ± 0° 30'

TOLERANCES ANGLES

REPROVAL NO. 440H 23858

1	TFP-2.5K	
Q'TY./UNIT	MODEL USED ON	ASS'Y. NO.
SCALE	CODE	S401-451
1:1	A	S401-
		S401-
THE CONTENTS OF THIS DRAWING ARE THE EXCLUSIVE PROPERTY OF THE TECHNICAL MATERIEL CORP. ITS UNAUTHORIZED USE OR REPRODUCTION IN WHOLE OR IN PART IS STRICTLY FORBIDDEN.		