

REVISIONS					
SYM	DESCRIPTION	DATE	E.M.N. NO.	DRAFT	CHKD
X	EXPER. RELEASE	4-8-64	1	<i>E. L...</i>	@
Ø	ORIGINAL RELEASE FOR PRODUCTION	5-12-64		WB	

MS-3741

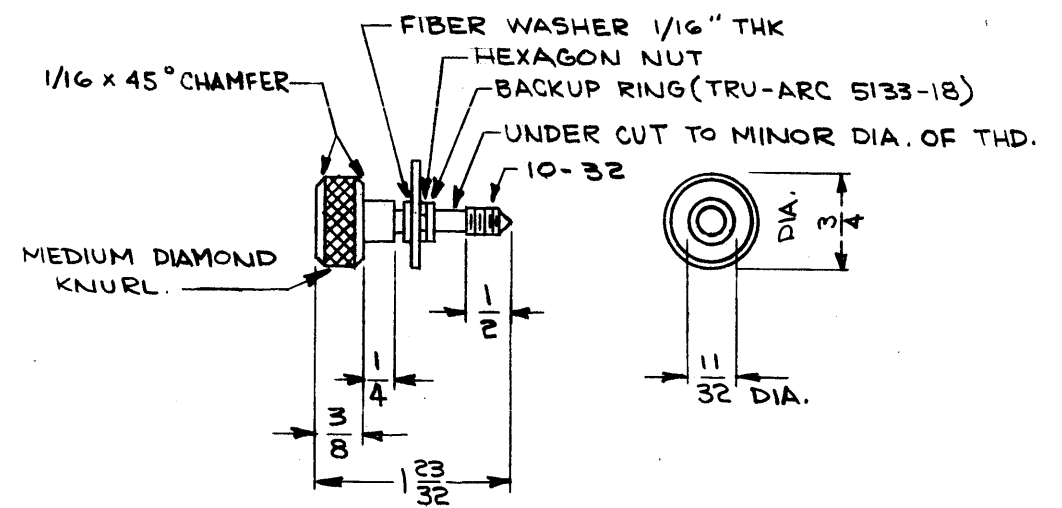
LEGEND		
HOLE	DESCRIPTION	REQ.
A	.203 DIA	4

SEE CAPTIVE SCREW & NUT DETAIL. MOUNT IN ALL "A" HOLES.

METAL STAMP TMC PART NO. MS-3741- W/LATEST REV. LETTER 1/8 HIGH GOTHIC LOCATED ON REAR.

BLACK NEOPRENE CHANNEL. ALL AROUND EDGE AFTER FINISHING. (CONTINENTAL #528)

4 PLACES



CAPTIVE SCREW & NUT DETAIL (4 REQ)

- UNLESS OTHERWISE SPECIFIED:**
1. USE MATERIAL THICKNESS FOR MAXIMUM RADIUS ON ALL BENDS.
 2. ALL ANGULAR BENDS 90°.
 3. REMOVE ALL BURRS AND SHARP EDGES.
 4. MOUNT INSERTS AFTER FINISHING.

FINISH NOTES*
 S-404 - IRIDITE 14-2 AL-COAT.
 S-114 - ZINC CHROMATE PRIMER
 S-520 - BLUE-GRAY TEXTURED VINYL PAINT.

NOTES

1	GPT-10KZ	AX-292
1	GPT-40KH	AX-291
Q'TY./UNIT	MODEL USED ON	ASS'Y. NO.
SCALE 1:4	CODE A	

THE CONTENTS OF THIS DRAWING ARE THE EXCLUSIVE PROPERTY OF THE TECHNICAL MATERIEL CORP. ITS UNAUTHORIZED USE OR REPRODUCTION IN WHOLE OR IN PART IS STRICTLY FORBIDDEN.

REQ'D.	ITEM	PART NUMBER	DESCRIPTION	SYMBOL
F. BUDETTI LIST OF MATERIAL				
MATERIAL .063, ALUMINUM 5052-H32			THE TECHNICAL MATERIEL CORP. MAMARONECK, NEW YORK	
FINISH SEE NOTES			TITLE PANEL, REAR, AUXILIARY FRAME	
UNLESS OTHERWISE SPECIFIED DIMENSIONS ARE IN INCHES AND INCLUDE CHEMICALLY APPLIED OR PLATED FINISHES				
DRAWN <i>E. L...</i>		DATE 4-8-64	FINAL APPROVAL <i>RDE</i>	
CHECKED @		DATE 4-22-64		
ELECTRICAL <i>WB</i>		DATE 5-11-64	MS-3741	
MECH. DES. <i>WB</i>		DATE	Ø	
DECIMALS .X ± .05 .XX ± .01 .XXX ± .005			TOLERANCES ± 1/64 ANGLES ± 0° 30'	
SHEET			REV. LTR.	