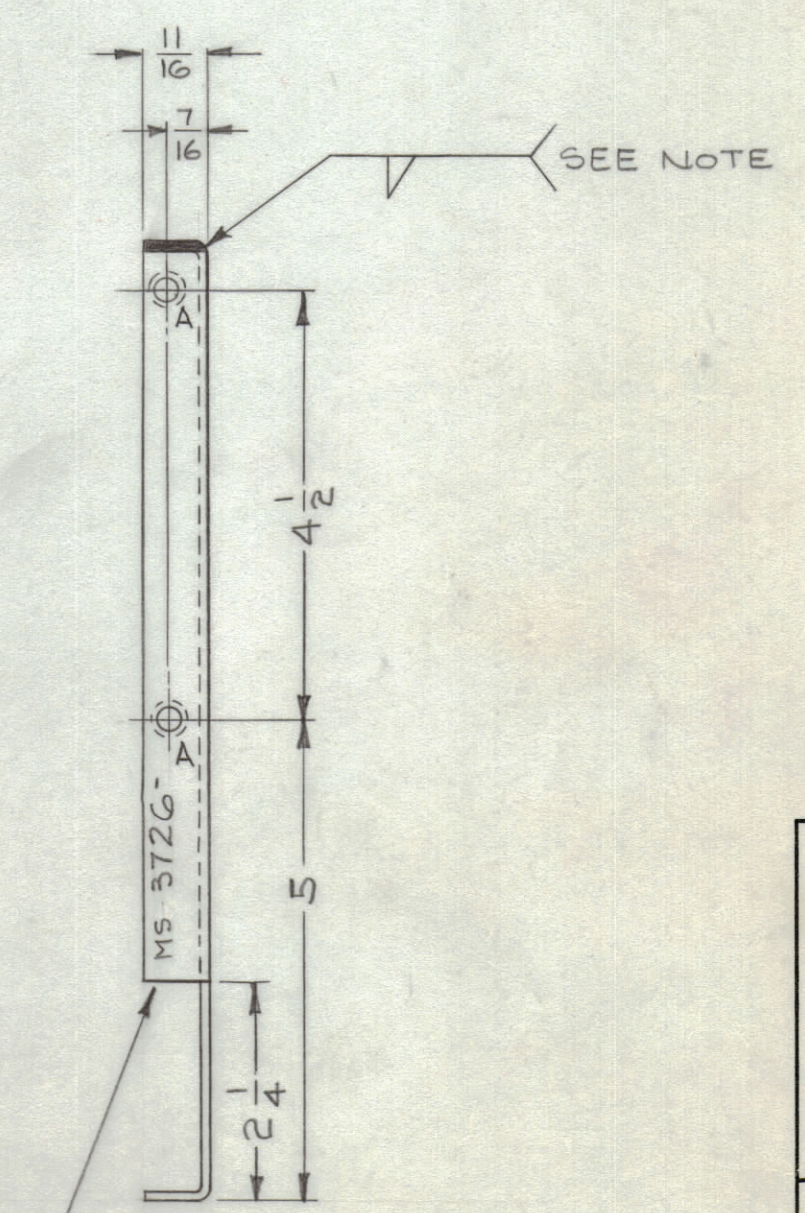
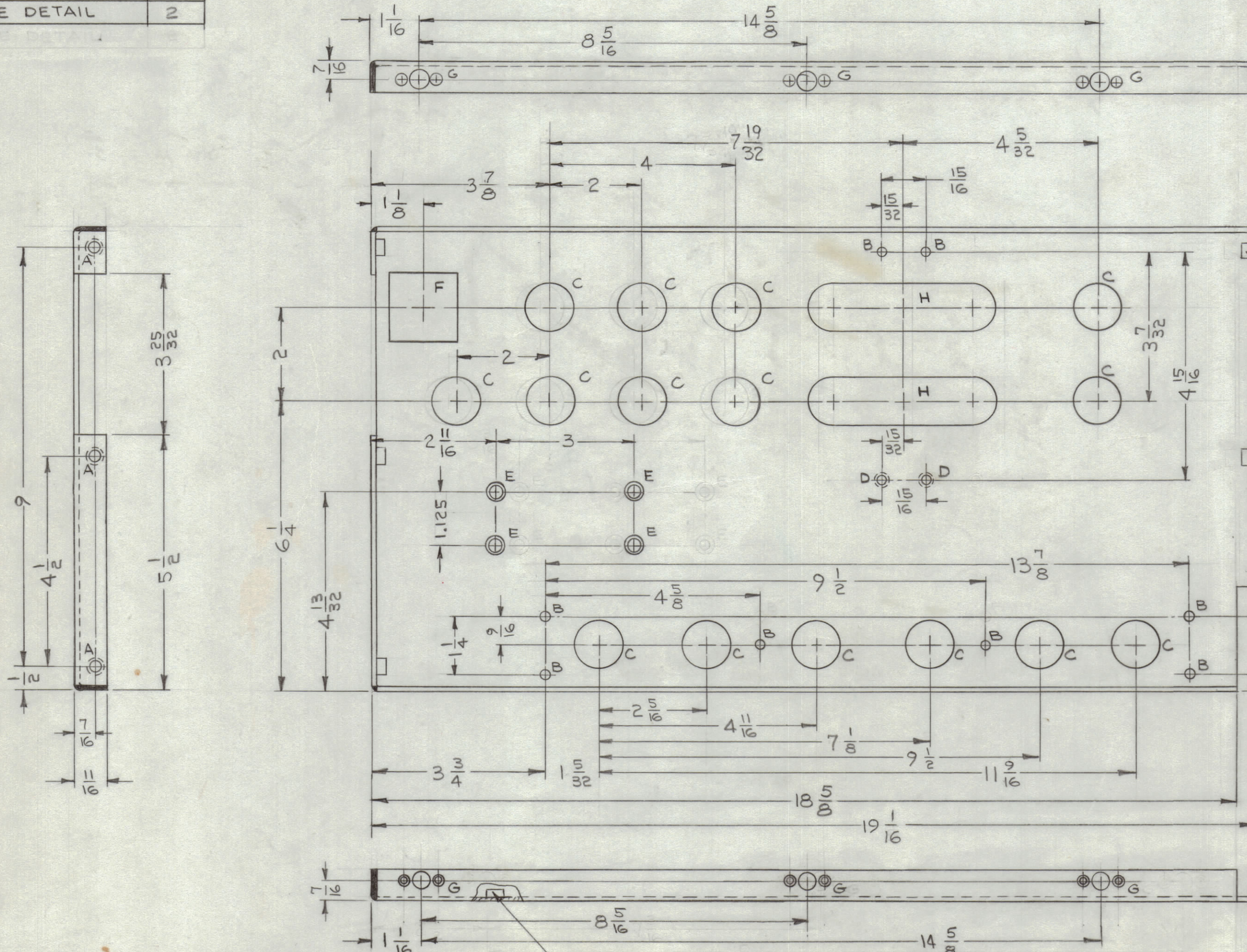
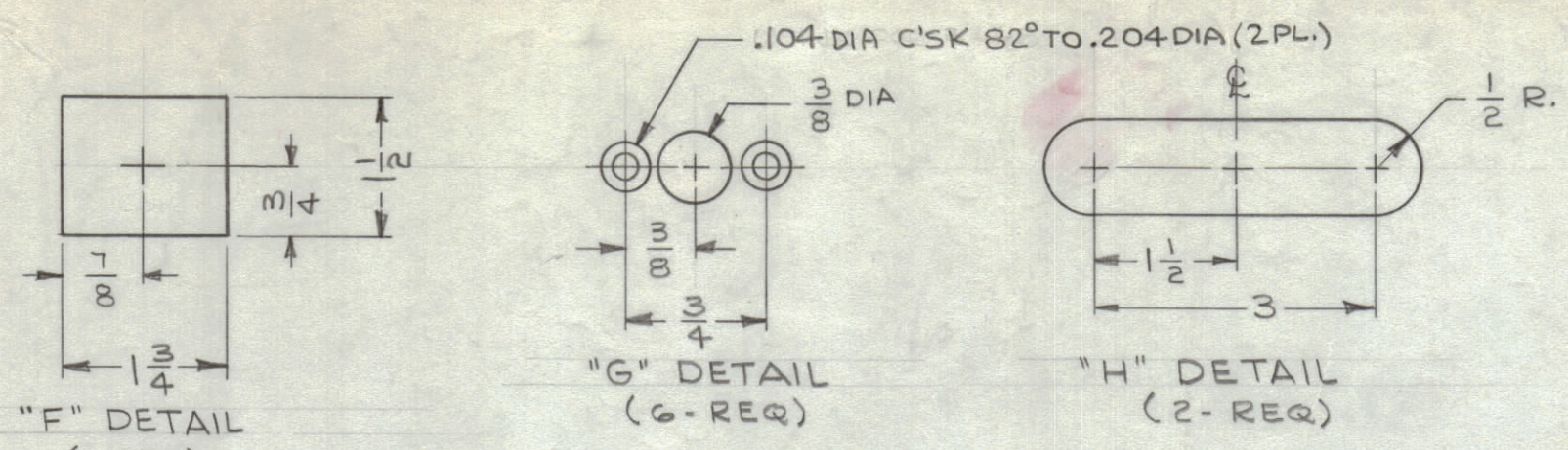


LEGEND		
HOLE	DESCRIPTION	REQ.
A	.221 - .224 DIA.	5
B	11/64 DIA.	8
C	1" DIA	15
D	.144 DIA. HOLE, C'SINK 82° TO .284 DIA.	2
E	.253 - .250 DIA.	4
F	SEE DETAIL	1
G	SEE DETAIL	6
H	SEE DETAIL	2

REVISIONS						
ZONE	SYM	DESCRIPTION	DATE	E.M.N. NO.	DRAFT	CHKD
X	X1	EXPERIMENTAL RELEASE	3/17/64			
X	X1	DIMENSION 19 1/16 WAS 18 1/16 - DIMENSION 18 5/8 ADDED	4/20/64			
X	X2	7 "C" HOLES RELOCATED - "E" HOLES WERE C'SINK	5-1-64			
#	Ø	ORIGINAL RELEASE FOR PRODUCTION	8.11.64			



METAL STAMP TMC PART NO. 1/8 HIGH GOTHIC WITH LATEST REVISION LETTER

NOTE: ALUMINUM FILLET WELD 3 CORNERS.

- UNLESS OTHERWISE SPECIFIED:
1. USE MATERIAL THICKNESS FOR MAXIMUM RADIUS ON ALL BENDS.
  2. ALL ANGULAR BENDS 90°.
  3. REMOVE ALL BURRS AND SHARP EDGES.
  4. MOUNT INSERTS AFTER FINISHING.

1	HFR-2A	ASS'Y. NO.
QTY./UNIT	MODEL USED ON	ASS'Y. NO.
SCALE 1:2	CODE A	

THE CONTENTS OF THIS DRAWING ARE THE EXCLUSIVE PROPERTY OF THE TECHNICAL MATERIEL CORP. ITS UNAUTHORIZED USE OR REPRODUCTION IN WHOLE OR IN PART IS STRICTLY FORBIDDEN.

REQ'D.	ITEM	PART NUMBER	DESCRIPTION	SYMBOL
4	1	NT-129-1032-4	NUT, ROUND, SWAGE TYPE	E
5	1	NT-129-832-4	NUT, ROUND, SWAGE TYPE	A

T. KRUY LIST OF MATERIAL

MATERIAL .081, ALUMINUM 5052-H32

FINISH S-404 IRIDITE, 14-2 AL COAT

THE TECHNICAL MATERIEL CORP. MAMARONECK, NEW YORK

TITLE PLATE, SIDE - LEFT

UNLESS OTHERWISE SPECIFIED DIMENSIONS ARE IN INCHES AND INCLUDE CHEMICALLY APPLIED OR PLATED FINISHES

DECIMALS: .X ± .05, .XX ± .01, .XXX ± .005

FRACTIONS: ± 1/64 ANGLES ± 0° 30'

TOLERANCES

DRAWN G. SANCHEZ, CHECKED @, ELECT./DES. J. KAUFER, MECH./DES. J. KAUFER

DATE 2-18-64, DATE 8/4/64

FINAL APPROVAL [Signature]

MS 3726 Ø

NOTES

MS 3726 Ø