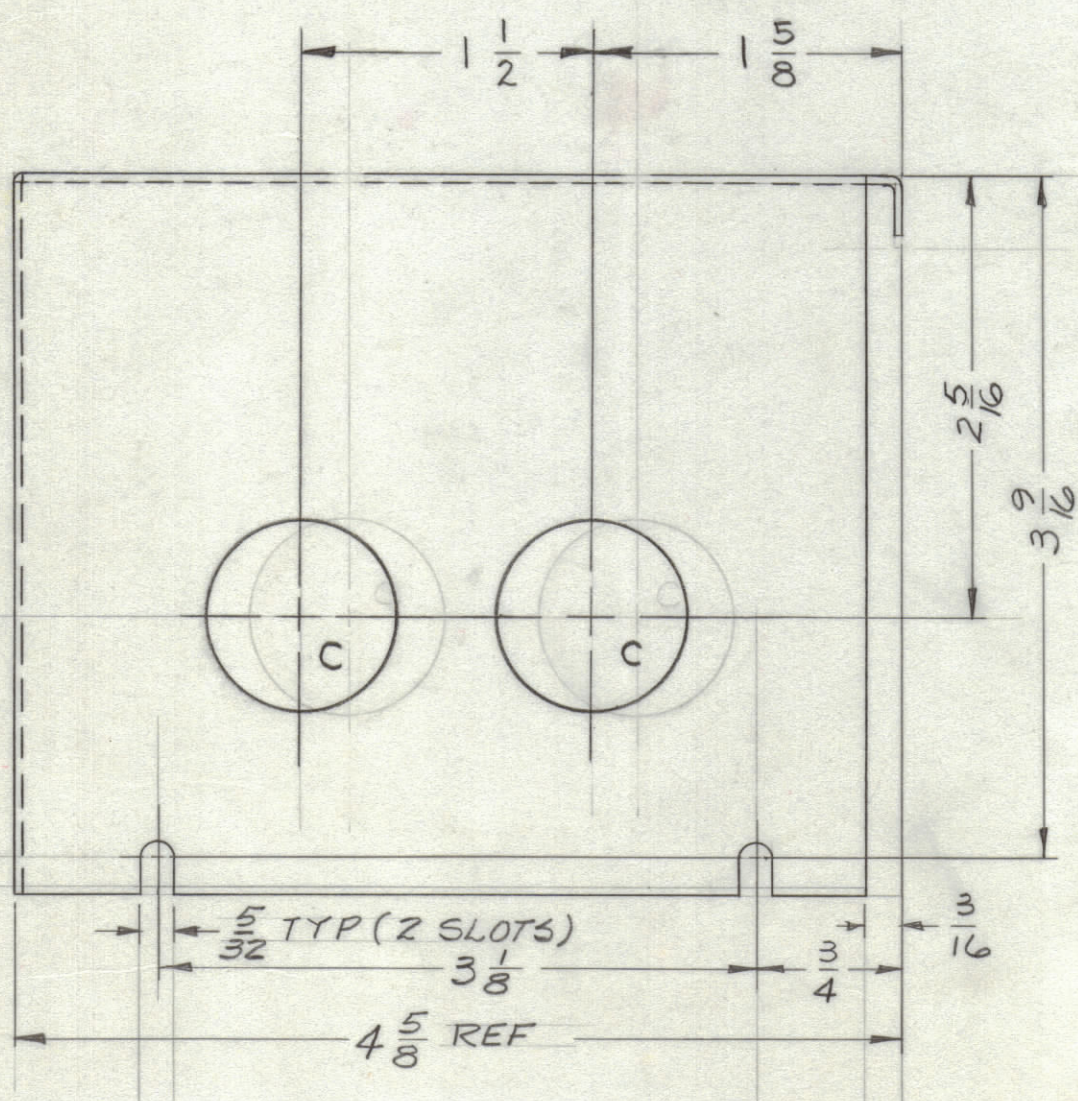
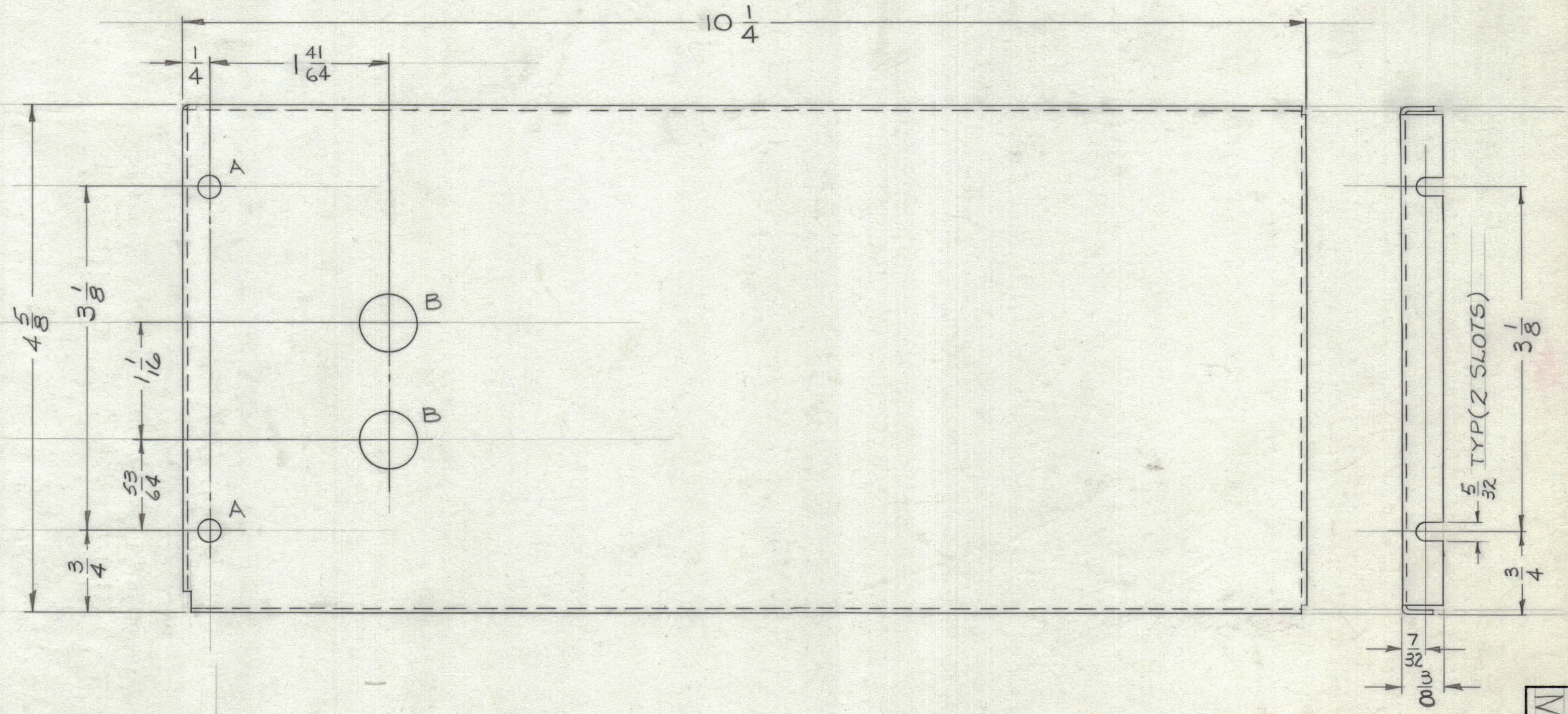


REVISIONS							
ZONE	SYM	DESCRIPTION	DATE	E.M.N. NO.	DRAFT	CHKD	APPD
-#	X	EXPERIMENTAL RELEASE	3/16/64	-#	AD		
+	Ø	ORIGINAL RELEASE FOR PRODUCTION	8.11.64	#	WB		
CG	A	2" C-HOLES RELOC., DIM 15/8 WAS 13/8	9.2.64	12288	WB		
#	B	CLERICAL CHANGE (LD1796 REF ADDED)	3.1.65	#	WB		

HOLE LEGEND		
HOLE	DESCRIPTION	REQ
A	3/16 DIA	2
B	1/2 DIA	2
C	1" DIA	2



METAL STAMP TMC PART NO. 1/8 HIGH GOTHIC, WITH LATEST REVISION LETTER.

- UNLESS OTHERWISE SPECIFIED:
1. USE MATERIAL THICKNESS FOR MAXIMUM RADIUS ON ALL BENDS.
  2. ALL ANGULAR BENDS 90°.
  3. REMOVE ALL BURRS AND SHARP EDGES.

LD1796

REQ'D.	ITEM	PART NUMBER	DESCRIPTION	SYMBOL
	T. KRUY	E3112B	LIST OF MATERIAL	
MATERIAL		THE TECHNICAL MATERIEL CORP. MAMARONECK, NEW YORK		
.040 THK ALUM 5052-H32		TITLE COVER, OUTSIDE TOP, OVEN		
FINISH		S404 YEL IRIDITE		
UNLESS OTHERWISE SPECIFIED DIMENSIONS ARE IN INCHES AND INCLUDE CHEMICALLY APPLIED OR PLATED FINISHES		DRAWN <i>AD Davis</i> DATE 3/16/64 CHECKED <i>WB</i> DATE 8/1/64 ELECT. DES. <i>Ringer</i> DATE 3/16/64 MECH. DES. DATE		
DECIMALS X ± .05 .XX ± .01 .XXX ± .005		TOLERANCES		FINAL APPROVAL <i>WB</i> DATE 3/16/64 MS 3723 B SHEET
		FRACTIONS ± 1/64 ANGLES ± 0° 30'		REV. LTR.

Q'TY./UNIT	MODEL USED ON	ASSY. NO.
SCALE 1:1	CODE A	
THE CONTENTS OF THIS DRAWING ARE THE EXCLUSIVE PROPERTY OF THE TECHNICAL MATERIEL CORP. ITS UNAUTHORIZED USE OR REPRODUCTION IN WHOLE OR IN PART IS STRICTLY FORBIDDEN.		

NOTES

MS-3723 B