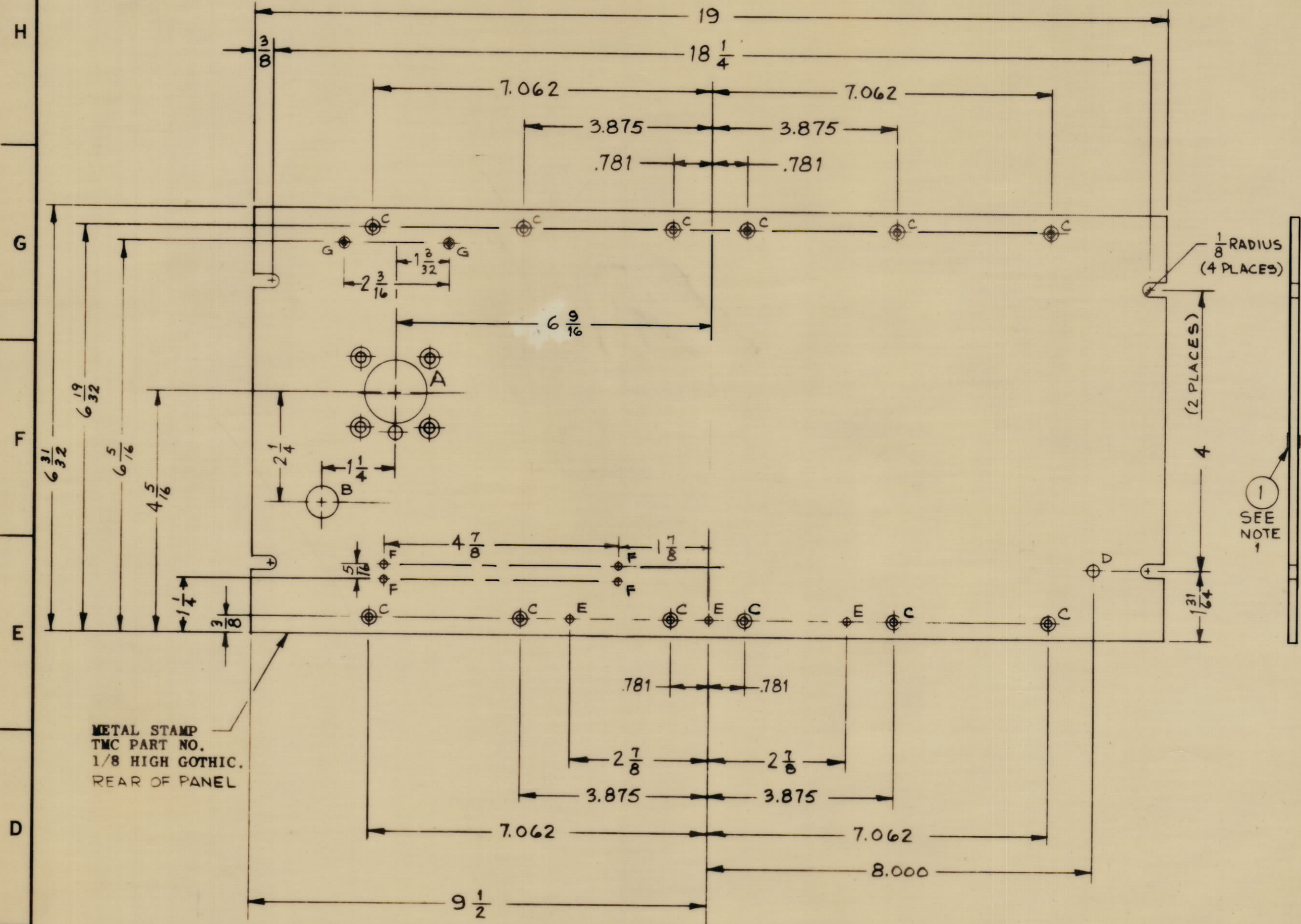


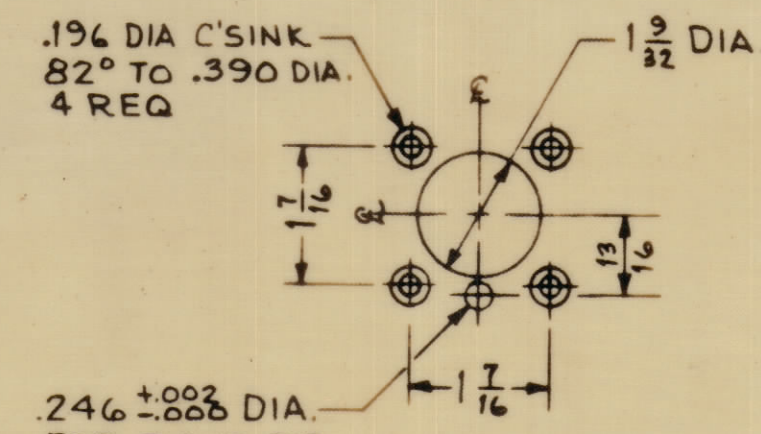
REVISIONS							
ZONE	SYM	DESCRIPTION	DATE	EMN NO	DRAFT	CHKD	APPD
0		ORIGINAL RELEASE FOR PRODUCTION	3-3-64			A.M.	



FRONT VIEW

LEGEND

HOLE	DESCRIPTION	REQ
A	SEE DETAIL	1
B	4/64 DIA	1
C	.144 DIA. C'SINK 82° TO .284 DIA.	12
D	13/64 DIA.	1
E	.070 DIA.	3
F	.144 DIA.	4
G	DRILL & TAP FOR 3-48 AND C'SINK 82° TO .204 DIA.	2



DETAIL "A"

METAL STAMP
TMC PART NO.
1/8 HIGH GOTHIC.
REAR OF PANEL

- MACHINING:**
- MILL ALL EDGES.
 - HOLES MUST BE DRILLED, UNLESS OTHERWISE SPECIFIED.
 - LATERAL BOW OF PANEL MUST BE KEPT TO .031 TOLERANCE.
 - PANEL MUST BE FREE OF ALL MACHINING MARKS, GOUGES AND SCRATCHES. IF NECESSARY, SAND FRONT OF PANEL WITH NO. 120 GRIT SANDPAPER.

- FINISH NOTES:**
- S404 - IRIDITE 14-2 AL-COAT.
 - S114 - ZINC CHROMATE PRIMER) FRONT AND
 - S115 - SMOOTH GRAY ENAMEL) EDGES ONLY

NOTE:

- MOUNT ITEM 1 AS SHOWN AFTER FINISHING. (4 PLACES)

NOTES

1	GDP-PA-105	
QTY/UNIT	MODEL USED ON	ASBY NO
SCALE	CODE	
NTS	A	

THE CONTENTS OF THIS DRAWING ARE THE EXCLUSIVE PROPERTY OF THE TECHNICAL MATERIEL CORP. ITS UNAUTHORIZED USE OR REPRODUCTION IN WHOLE OR IN PART IS STRICTLY FORBIDDEN.

1	1	BB-115	BEARING, OILITE	
REQ'D	ITEM	PART NUMBER	DESCRIPTION	SYMBOL
MARTINENGO		LIST OF MATERIAL		
MATERIAL		THE TECHNICAL MATERIEL CORP.		
ALUMINUM 3/16		MAMARONECK, NEW YORK		
2024-T3		TITLE		
SEE NOTES		PANEL, FRONT		
UNLESS OTHERWISE SPECIFIED DIMENSIONS ARE IN INCHES AND INCLUDE CHEMICALLY APPLIED OR PLATED FINISHES		DRAWN	DATE	FINAL APPROVAL
		M. TANTILLO	2-14-64	RJC
		CHECKED	DATE	
			3-3-64	
DECIMALS		FRACTIONS		
X ± .05		± 1/64		
XX ± .01		ANGLES		
XXX ± .005		± 0° 30'		
TOLERANCES		ELECT. DES.	DATE	
			3-3-64	
		MECH. DES.	DATE	

MS-3715

MS-3715