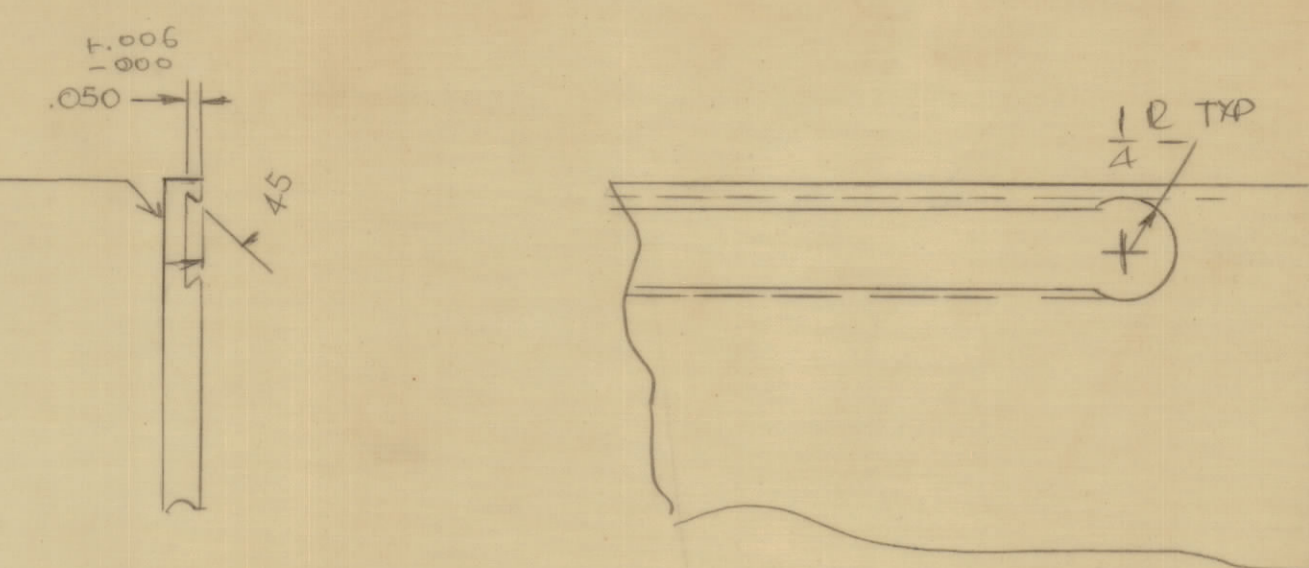
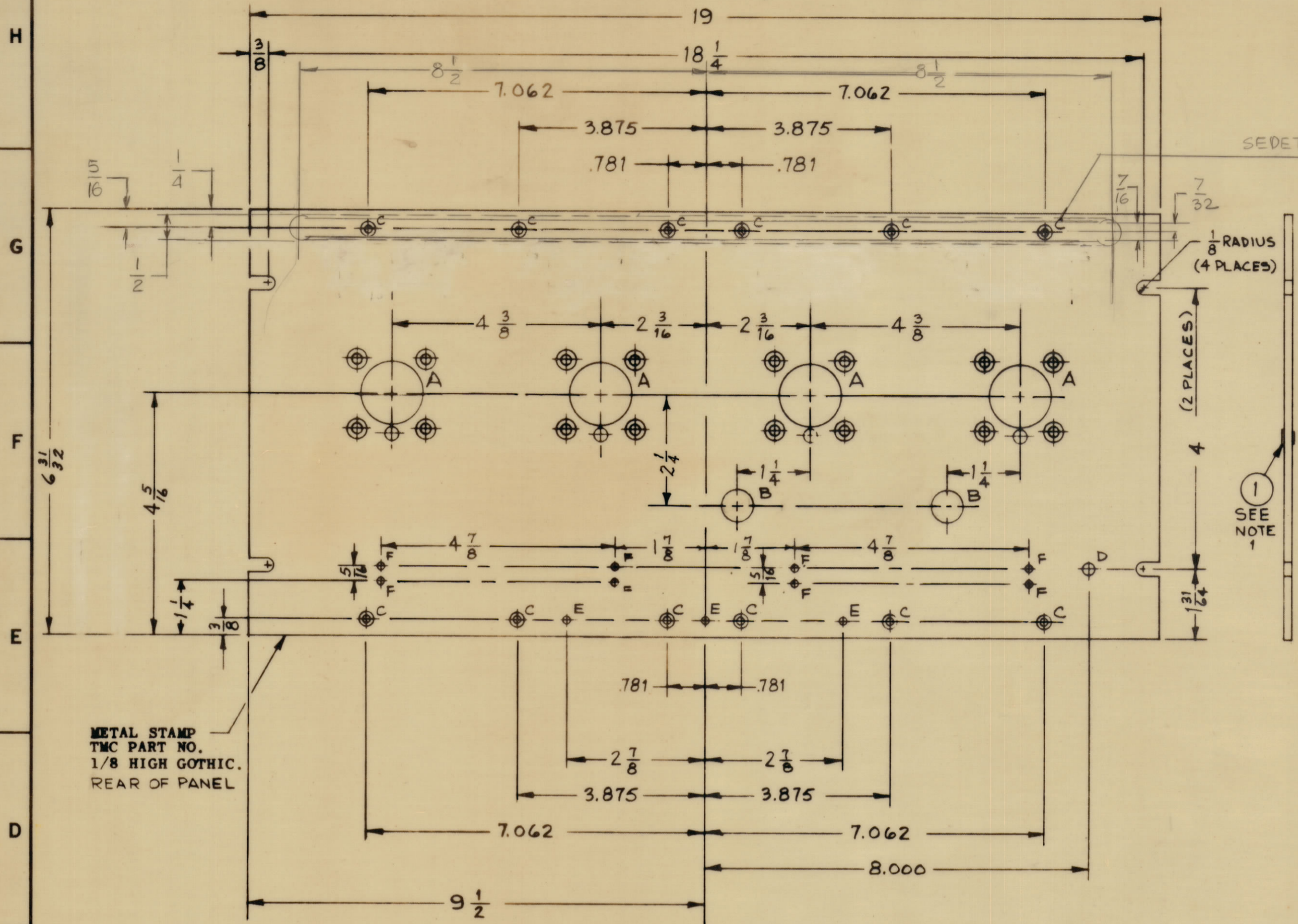
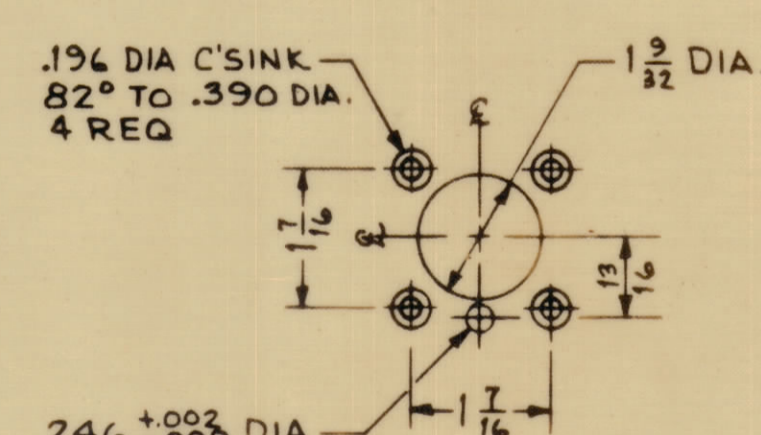


REVISIONS						
ZONE	SYM	DESCRIPTION	DATE	EM N NO	DRAFT	CHKD
		ORIGINAL RELEASE FOR PRODUCTION	3-364		A.M.	
	A	"C" HOLES DRILL & TAP FOR 0348 DLETED SLOT 17" X 1/2" ADD "C" HOLES RELOCATED	5.284	22088	GDL	



LEGEND

HOLE	DESCRIPTION	REQ
A	SEE DETAIL "A"	4
B	4 1/64 DIA	2
C	.144 DIA. C'SINK 82° TO .284 DIA.	12
D	13/64 DIA.	1
E	.070 DIA.	3
F	.144 DIA.	8
G		



.246 ±.002 DIA.
FOR TIGHT FIT
(CLASS 6) OF
ITEM 1

DETAIL "A"

- MACHINING:**
- MILL ALL EDGES.
 - HOLES MUST BE DRILLED, UNLESS OTHERWISE SPECIFIED.
 - LATERAL BOW OF PANEL MUST BE KEPT TO .031 TOLERANCE.
 - PANEL MUST BE FREE OF ALL MACHINING MARKS, GOUGES AND SCRATCHES. IF NECESSARY, SAND FRONT OF PANEL WITH NO. 120 GRIT SANDPAPER.

- FINISH NOTES:**
- S404 - IRIDITE 14-2 AL-COAT.
 - S114 - ZINC CHROMATE PRIMER) FRONT AND
 - S115 - SMOOTH GRAY ENAMEL) EDGES ONLY

NOTE:

- MOUNT ITEM 1 AS SHOWN AFTER FINISHING. (4 PLACES)

1	QDP-PA-103	ASSY NO
QTY/UNIT	MODEL USED ON	
SCALE	CODE	
NTS	A	

4	1	BB-115	BEARING, OILITE	
REQ'D.	ITEM	PART NUMBER	DESCRIPTION	SYMBOL
MARTINENGO LIST OF MATERIAL				
MATERIAL ALUMINUM 3/16 2024-T3			THE TECHNICAL MATERIEL CORP. MAMARONECK, NEW YORK	
FINISH SEE NOTES			TITLE PANEL, FRONT	
UNLESS OTHERWISE SPECIFIED DIMENSIONS ARE IN INCHES AND INCLUDE CHEMICALLY APPLIED OR PLATED FINISHES			DRAWN M. TANTILLO	DATE 2-14-64
DECIMALS X ± .05 XX ± .01 XXX ± .005			CHECKED <i>[Signature]</i>	DATE 3-3-64
FRACTIONS TOLERANCES ± 1/64 ANGLES ± 0° 30'			ELECT. DES. <i>[Signature]</i>	DATE 3-3-64
THE CONTENTS OF THIS DRAWING ARE THE EXCLUSIVE PROPERTY OF THE TECHNICAL MATERIEL CORP. ITS UNAUTHORIZED USE OR REPRODUCTION IN WHOLE OR IN PART IS STRICTLY FORBIDDEN.			MECH DES. <i>[Signature]</i>	DATE 3-3-64
			FINAL APPROVAL <i>[Signature]</i>	
			DATE 3/3/64	
			SHEET MS-3713	
			REV. LTR. A	

NOTES

MS-3713