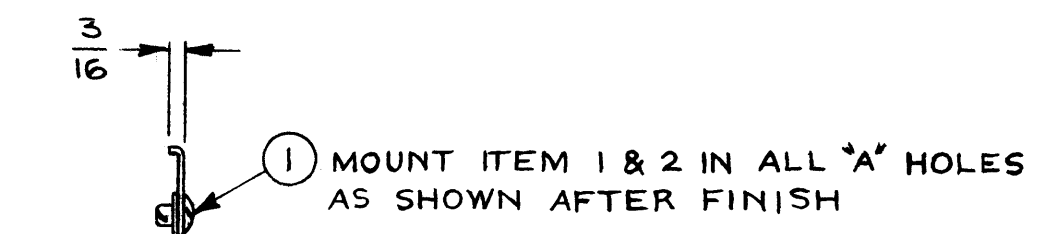
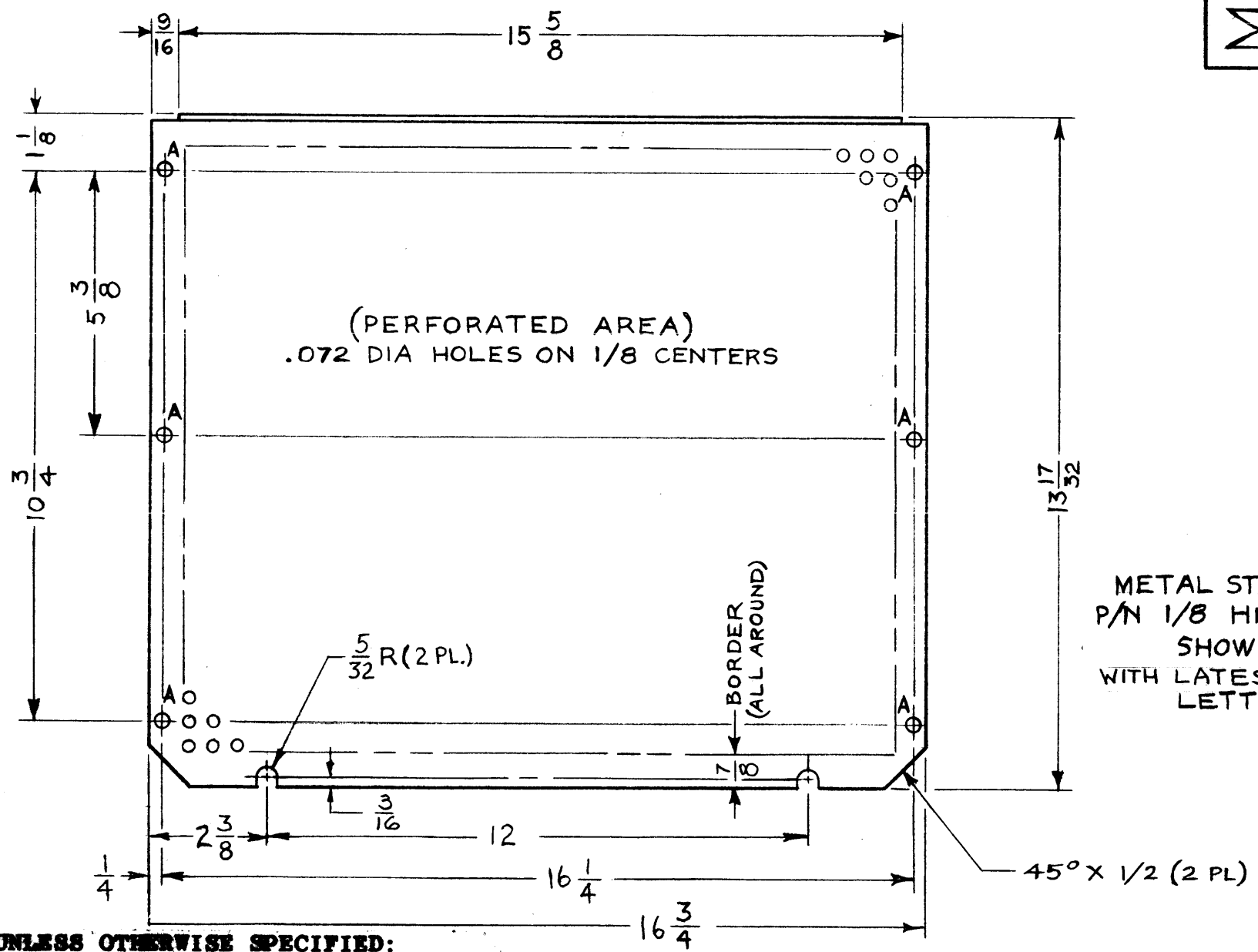


MS 3707 B

REVISIONS

SYM	DESCRIPTION	DATE	E.M.N. NO.	DRAFT	CHKD	APPD
X1	DIM. 3/16 WAS 1/4 (SIDE VIEW)	3-23-64		AS		
Ø	ORIGINAL RELEASE FOR PRODUCTION	6/25/64	Ø	A.M.		
A	ON B/M: IT (2) WAS "FS 109"	12-7-64	13065	92		
B	5/32 R. CUTOUTS & LOC. DIM. ADD. (2 PL.)	1-19-65	13267	92		



LEGEND		
HOLE	DESCRIPTION	REQ'D
A	1/4 DIA	6

- UNLESS OTHERWISE SPECIFIED:**
1. USE MATERIAL THICKNESS FOR MAXIMUM RADIUS ON ALL BENDS.
  2. ALL ANGULAR BENDS 90°.
  3. REMOVE ALL BURRS AND SHARP EDGES.
  4. MOUNT INSERTS AFTER FINISHING.

NOTES

1	CSS-2	
Q'TY./UNIT	MODEL USED ON	ASS'Y. NO.
SCALE 1:3	CODE A	
THE CONTENTS OF THIS DRAWING ARE THE EXCLUSIVE PROPERTY OF THE TECHNICAL MATERIEL CORP. ITS UNAUTHORIZED USE OR REPRODUCTION IN WHOLE OR IN PART IS STRICTLY FORBIDDEN.		

REQ'D.	ITEM	PART NUMBER	DESCRIPTION	SYMBOL
6	2	FS 109-3	RING, STUD RETAINING	A
6	1	FS 110-1	STUD, SLOTTED HEAD	A

M. GELLMAN LIST OF MATERIAL

MATERIAL .052 THICK 5052-H32 ALUMINUM (PERFORATED)

FINISH S404 YELLOW IRIDITE 14-2 AL COAT

UNLESS OTHERWISE SPECIFIED DIMENSIONS ARE IN INCHES AND INCLUDE CHEMICALLY APPLIED OR PLATED FINISHES

DECIMALS .X ± .05 .XX ± .01 .XXX ± .05 TOLERANCES FRACTI NS ± 1/64 ANGLES ± 0° 30'

THE TECHNICAL MATERIEL CORP. MAMARONECK, NEW YORK

TITLE COVER, BOTTOM

DRAWN N. Peter DATE 1-23-64

CHECKED @ DATE 6-24-64

ELECT. DES DATE

MECH. DES M. Peter DATE 6-24-64

FINAL APPROVAL [Signature] DATE

MS 3707 B

SHEET

REV. LTR.