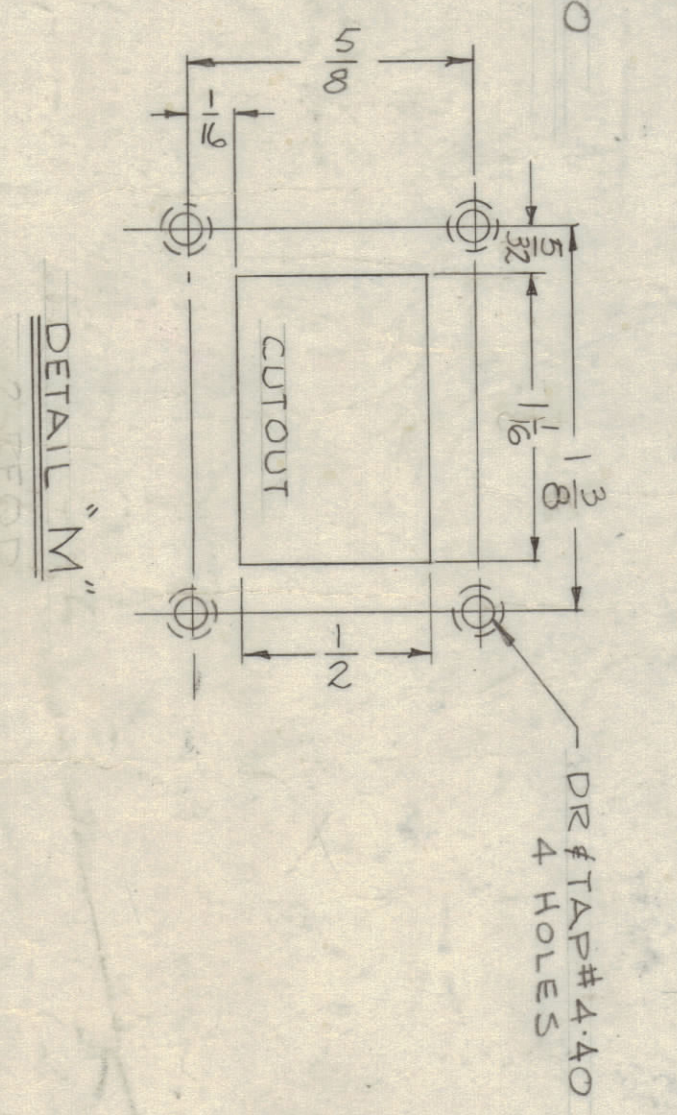
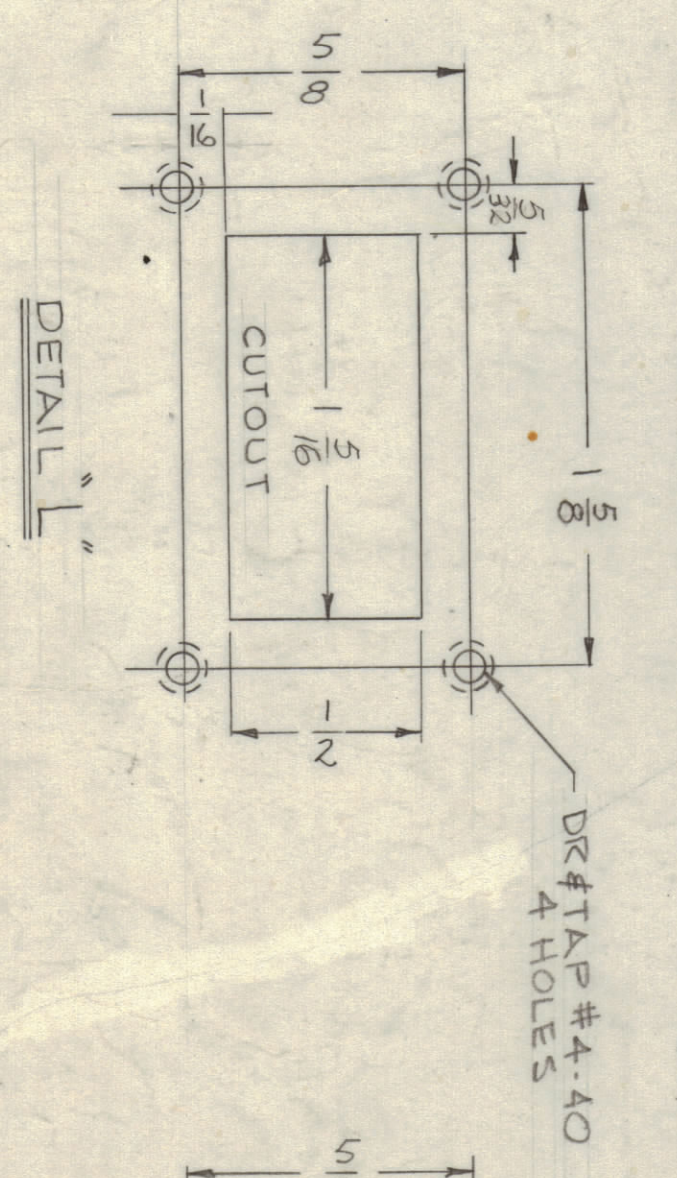
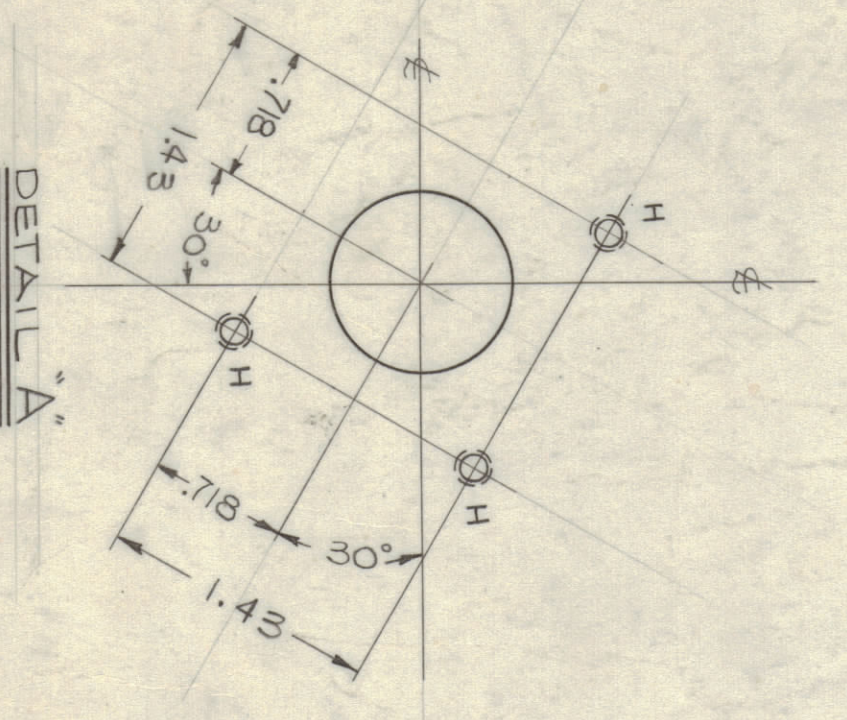
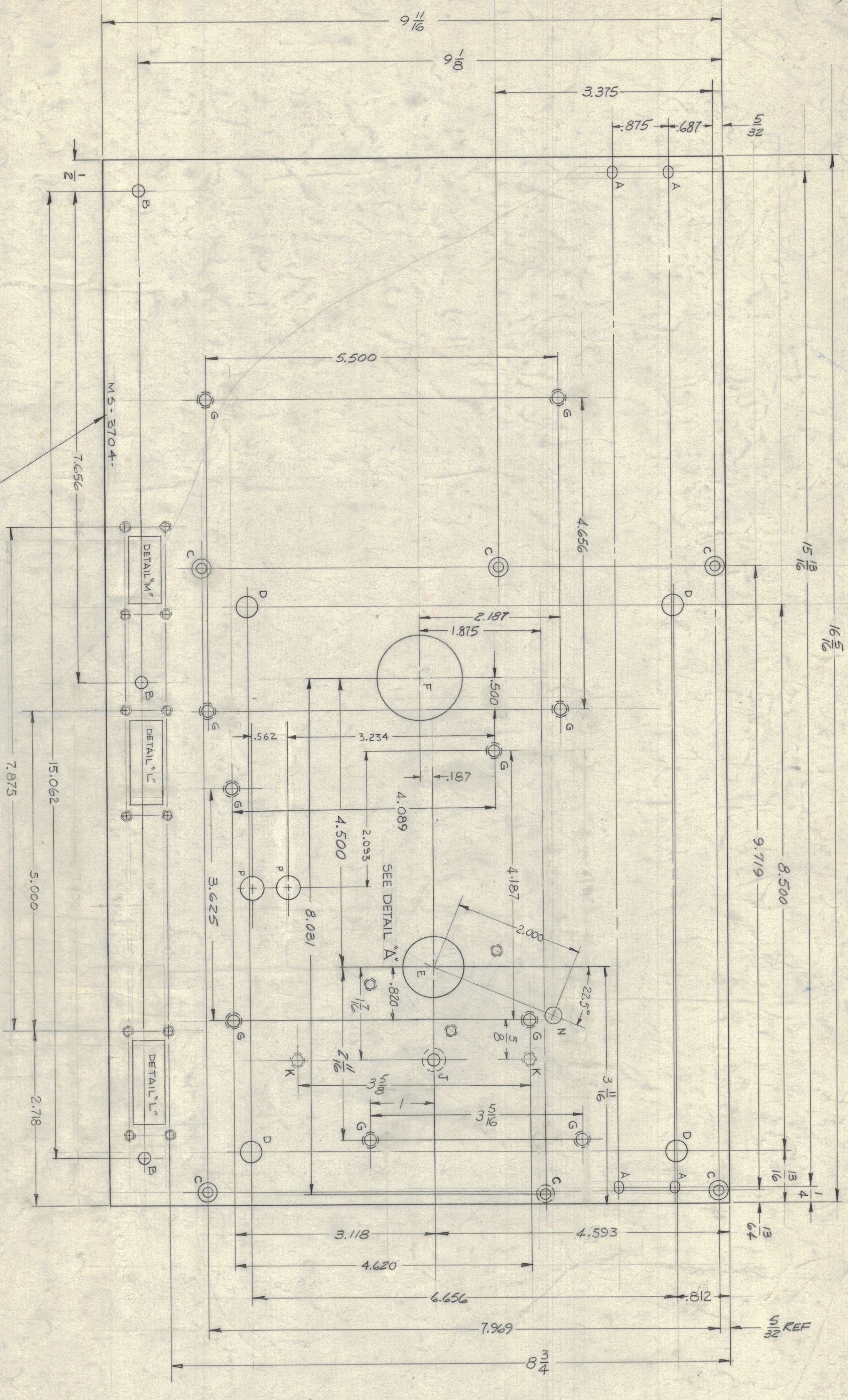


ZONE	SYM	DESCRIPTION	DATE	E.N. NO.	DRAWN	CHKD	APPR
X	X	EXPERIMENTAL RELEASE	3/17/44	-	AK		
X1	X1	DIMENSION 2718 WAS 2.916	5-6-44	-	AK	G.D.L.	
X2	X2	BEAR DELAIDED FROM TITLE	7-3-44	-			
Ø	Ø	UNUSUAL RELEASE FOR PRODUCTION	9-14-44	-			
A	A	ON HOLE LEGEND: HOLE "E" WAS 4 REG. (ERRORS)	12-15-13304	-	JF	JF	918
B	B	HOLE LEGEND: CHGD 4.625 TO 4.620	9-24-44	16884	RME		

REV	DATE	DESCRIPTION
1		
2		
3		
4		

HOLE	DESCRIPTION	REQD
A	1/8 X 3/16 SLOT	4
B	1 1/2 DIA	3
C	.144 DIA - CSK 82° X .284 DIA	6
D	.312 DIA	4
E	.938 ± .001 DIA	1
F	1 5/16 DIA	1
G	DR # TAP # 8 (1.64) - 32	10
H	.120 DIA - CSK 82° X .230 DIA (4-40)	3
J	.169 DIA - CSK 82° X .337 DIA	1
K	DR # TAP # G-32 THRU	2
L	SEE DETAIL	1
M	SEE DETAIL	1
N	3/8 (.375) DIA	2

UNLESS OTHERWISE SPECIFIED:  
1.- REMOVE ALL BURRS & SHARP EDGES



REV	DATE	DESCRIPTION
1		
2		
3		
4		

ITEM	PART NUMBER	DESCRIPTION	SYMBOL
1	HFRR-2	AL-305	
2	HFK-2A	A3024	
3			
4			

SCALE	QTY/UNIT	MODEL USED ON	ASBY NO.
1:1		A	

FINISH	DRAWN	DATE	FINAL APPROVAL	DATE
5404 YELLOW IRIDITE	AK	3/17/44	AK	3/17/44
	JF	12-15-13304	JF	12-15-13304
	RME	9-24-44	RME	9-24-44

NOTES

METAL STAMP TMC PART NO. 1/8 HIGH GOTHIC WITH LATEST REV LETTER

DR # TAP # 4-40  
4 HOLES

DR # TAP # 4-40  
4 HOLES

M.S.-3704 B