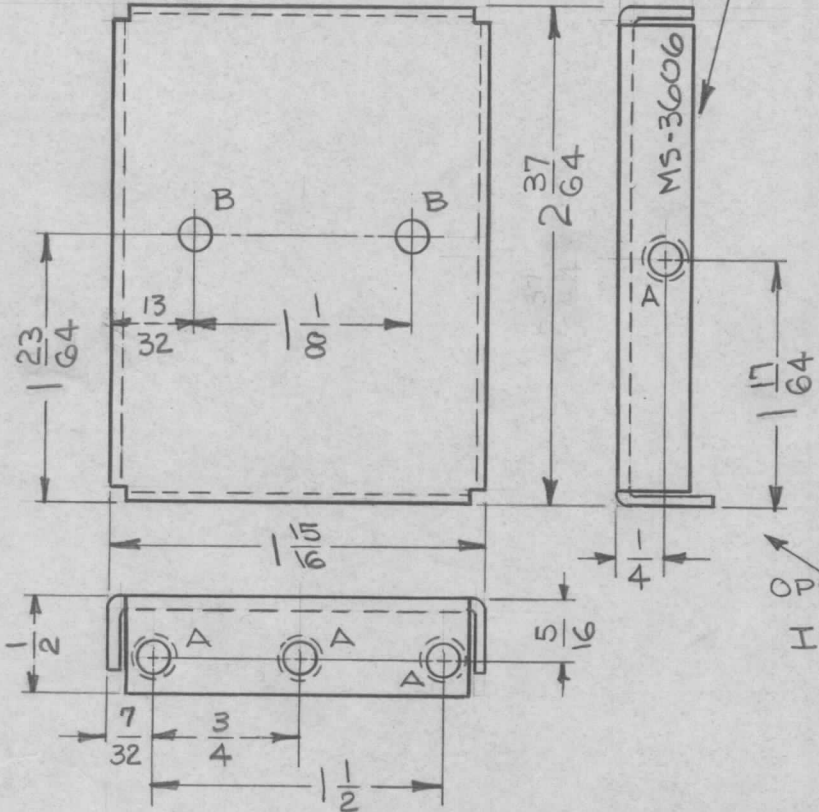


METAL STAMP TMC PART NO.
1/8 HIGH GOTHIC, WITH
LATEST REVISION LETTER.

REQ. PER UNIT	USED ON			MS-3606	Φ
	MODEL	ASS'Y. NO.	DATE		
5	LFS-1		8-10-63		

HOLE	DESCRIPTION	REQ
A	.161-.164 DIA	7
B	5/32 DIA.	2



OPPOSITE SIDE IDENTICAL

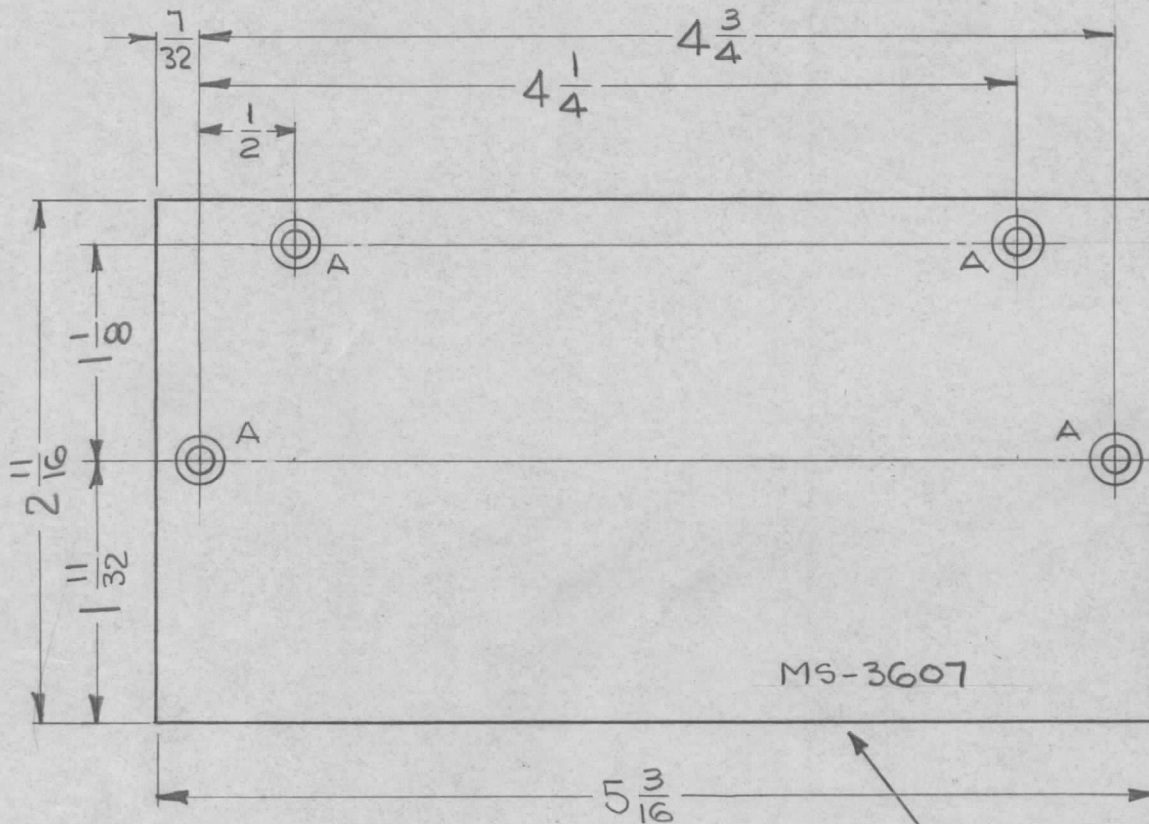
UNLESS OTHERWISE SPECIFIED:

1. USE MATERIAL THICKNESS FOR MAXIMUM RADIUS ON ALL BENDS.
2. ALL ANGULAR BENDS 90°.
3. REMOVE ALL BURRS AND SHARP EDGES.
4. MOUNT INSERTS AFTER FINISHING.

7	1	NT-129-0440-3	NUT, ROUND, SWAGE TYPE	A
REQ. ITEM		PART NO.	DESCRIPTION	SYMBOL
		.040	THE TECHNICAL MATERIEL CORP. MAMARONECK, NEW YORK	
		ALUMINUM	PLATE, REAR (SPECTRUM FILTER)	
		5052-H32	—	G. Sencar
		3404-YEL. IRIDITE	—	MS-3606
		SCALE 1:1		
		UNLESS OTHERWISE SPECIFIED DIMENSIONS ARE IN INCHES AND INCLUDE CHEMICALLY APPLIED OR PLATED FINISHES		
		DECIMALS .X ± .05 .XX ± .01 .XXX ± .005		
		FRACTIONS ± 1/64 ANGLES ± 0° 30'		
		TOLERANCES		
		CODE A		
		FINISH & SPEC. NO.	ELEC. DES. APP.	MECH. DES. APP.

Φ	ORIGINAL RELEASE FOR PRODUCTION	1-27-64	Φ	—		
XI	SLOT ADDED TO TOP VIEW	2/24/64	1	ES		
SYM	DESCRIPTION	DATE	CH. NO.	DRAFTS	CHECKER	ENG. APP.

REQ. PER UNIT	USED ON			MS-3607 Φ
	MODEL	ASS'Y. NO.	DATE	
10	LFS-1		8-10-63	



LEGEND		
HOLE	DESCRIPTION	REQ
A	.120 DIA. HOLE, C'SINK 82° TO .230 DIA.	4

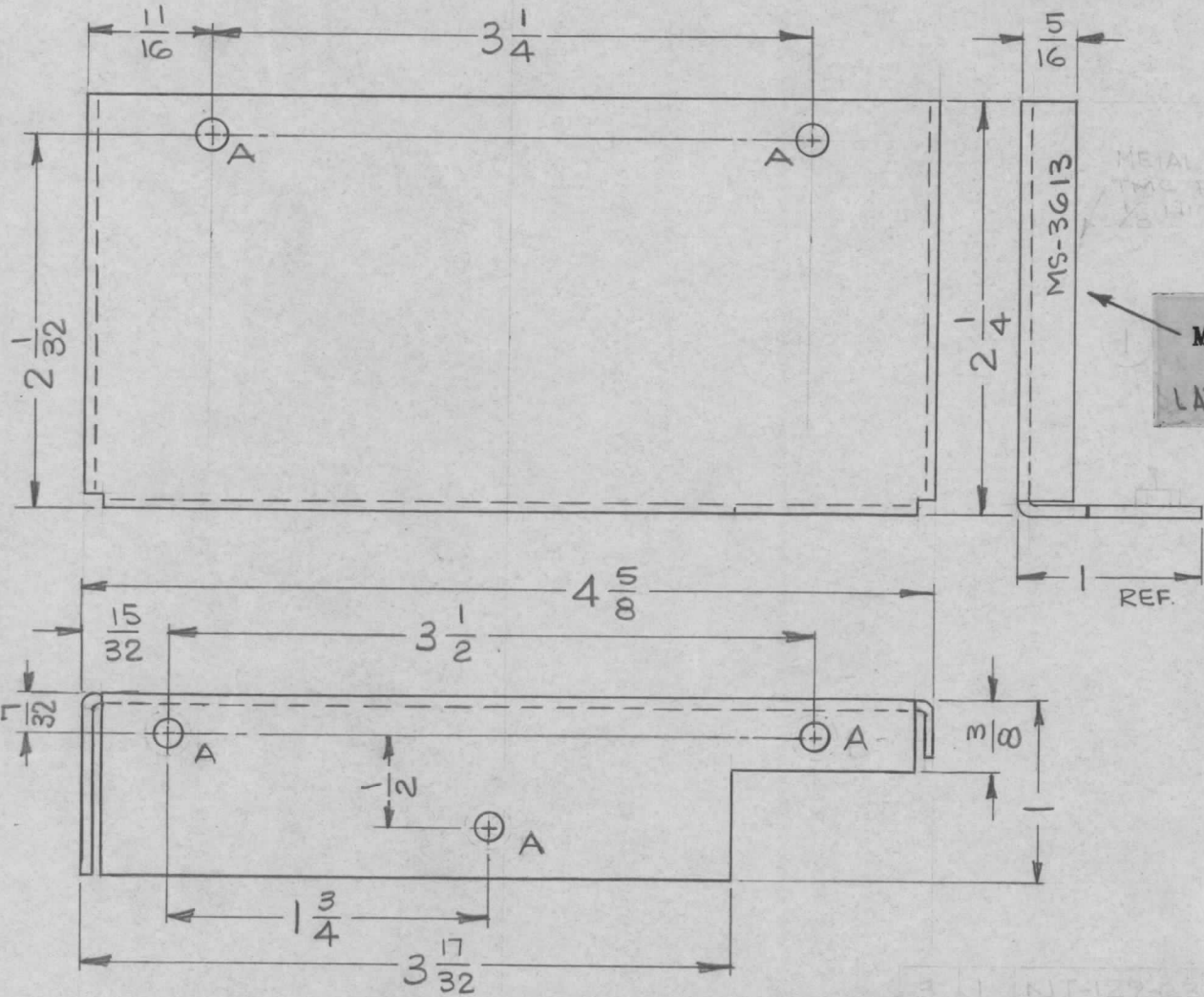
UNLESS OTHERWISE SPECIFIED:

1. USE MATERIAL THICKNESS FOR MAXIMUM RADIUS ON ALL BENDS
2. ALL ANGULAR BENDS 90 DEGREES
3. REMOVE ALL BURRS AND SHARP EDGES
4. MOUNT INSERTS AFTER FINISHING

METAL STAMP TMC PART NO.
1/8 HIGH GOTHIC, WITH
LATEST REVISION LETTER

SYM	DESCRIPTION	DATE	CH. NO.	DRAFTS	CHECKER	ENG. APP.	REQ. ITEM	PART NO.	M. GELLMAN DESCRIPTION	SYMBOL
Φ	ORIGINAL RELEASE FOR PRODUCTION	7-27-64	Φ	<i>Jim</i>						
								.031	THE TECHNICAL MATERIEL CORP. MAMARONECK, NEW YORK	
								STOCK SIZE		
								ALUMINUM	COVER, SIDE	
								MATERIAL	(SPECTRUM FILTER)	
							5052-H32	<i>—</i>	<i>G. Jensen</i>	<i>@</i>
							TYPE & TEMPER	HEAT TREAT. SPEC.	DRAWN	CHECKED
							S404 - YELLOW IRIDITE		<i>MS</i>	<i>RFZ</i>
							FINISH & SPEC. NO.	ELEC. DES. APP.	MECH. DES. APP.	MS-3607 Φ
UNLESS OTHERWISE SPECIFIED DIMENSIONS ARE IN INCHES AND INCLUDE CHEMICALLY APPLIED OR PLATED FINISHES		SCALE								
		1:1								
DECIMALS .X \pm .05 .XX \pm .01 .XXX \pm .005	TOLERANCES	FRACTIONS \pm 1/64 ANGLES \pm 0° 30'	CODE							
			A							

REQ. PER UNIT	USED ON			MS-3613	Φ
	MODEL	ASS'Y. NO.	DATE		
1	LFS-1		8-13-63		



LEGEND		
HOLE	DESCRIPTION	REQ
A	5/32 DIA.	5

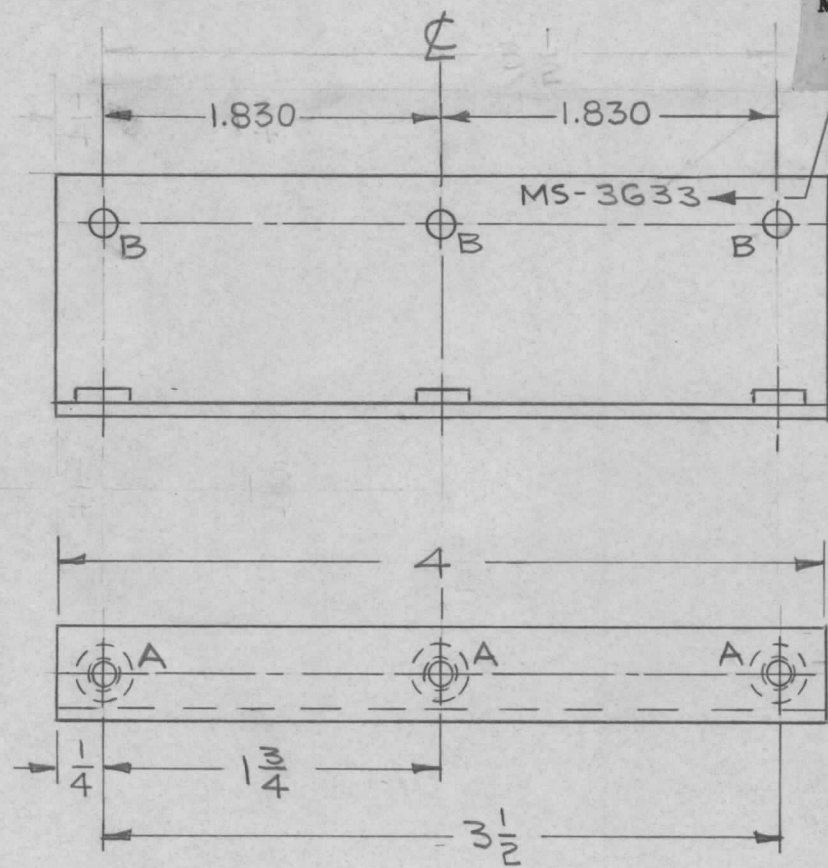
METAL STAMP TMC PART NO. 1/8 HIGH GOTHIC, WITH LATEST REVISION LETTER.

- UNLESS OTHERWISE SPECIFIED:
1. USE MATERIAL THICKNESS FOR MAXIMUM RADIUS ON ALL BENDS.
 2. ALL ANGULAR BENDS 90°.
 3. REMOVE ALL BURRS AND SHARP EDGES.

						REQ. ITEM	PART NO.	M. GELLMAN DESCRIPTION	SYMBOL
Φ	ORIGINAL RELEASE FOR PRODUCTION	7/27/64	Φ	Green			.062 THK.	THE TECHNICAL MATERIEL CORP. MAMARONECK, NEW YORK	
X1	SWAGE NOT DELETED FROM PICTORIAL	2/24/64	1	ES			ALUMINUM	BRACKET, SUPPORT (POWER SUPPLY)	
SYM	DESCRIPTION	DATE	CH. NO.	DRAFTS	CHECKER	ENG. APP.	MATERIAL		
UNLESS OTHERWISE SPECIFIED DIMENSIONS ARE IN INCHES AND INCLUDE CHEMICALLY APPLIED OR PLATED FINISHES		SCALE		1:1			5052-H32	G. Sauer	@
DECIMALS .X ± .05 .XX ± .01 .XXX ± .005	TOLERANCES	FRACTIONS ± 1/64 ANGLES ± 0° 30'	CODE				340A-YELLOW IRIDITE		
			A				FINISH & SPEC. NO.	ELEC. DES. APP.	MECH. DES. APP.
									MS-3613 Φ

HOLE	DESCRIPTION	REQD
A	.191-.194 DIA	3
B	9/64 DIA	3

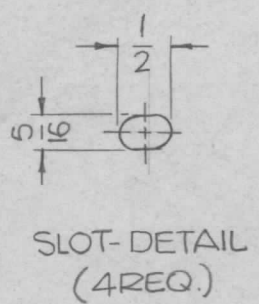
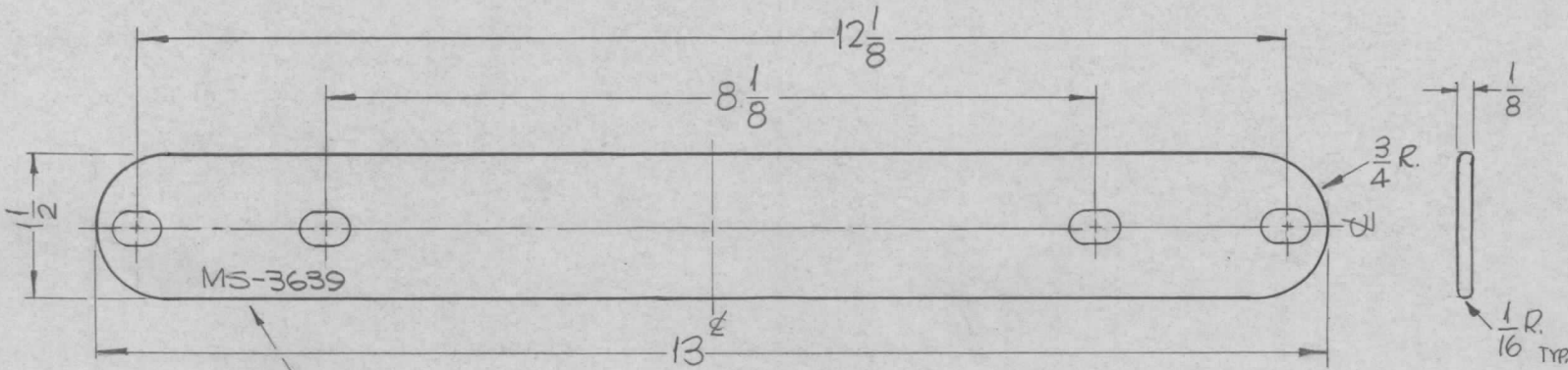
REQ. PER UNIT	USED ON		MS-3633	○
	MODEL	DATE		
2	LPP-4	10-15-63		



1. USE MATERIAL THICKNESS FOR MAXIMUM RADIUS ON ALL BENDS.
2. ALL ANGULAR BENDS 90°.
3. REMOVE ALL BURRS AND SHARP EDGES.

SYM	DESCRIPTION	DATE	CH. NO.	DRAFTS	CHECKER	ENG. APP.	REQ. ITEM	PART NO.	DESCRIPTION	SYMBOL	
							3	1	NT-129-632-4	NUT, ROUND, SWAGE TYPE	A
									.064 THK	THE TECHNICAL MATERIEL CORP. MAMARONECK. NEW YORK	
									ALUMINUM		BRACKET,
										TERMINAL BOARD	
									5052-H32	#	JAB @ 3-10-64
									S-404 YEL IRIDITE		MS-3633 ○
UNLESS OTHERWISE SPECIFIED DIMENSIONS ARE IN INCHES AND INCLUDE CHEMICALLY APPLIED OR PLATED FINISHES							SCALE				
							1:1				
DECIMALS .X ± .05 .XX ± .01 .XXX ± .005		FRACTIONS ± 1/64 ANGLES ± 0° 30'		TOLERANCES			CODE				
				A							

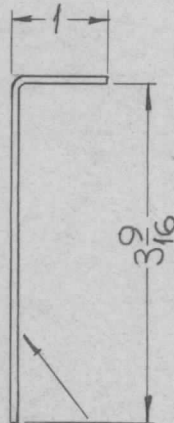
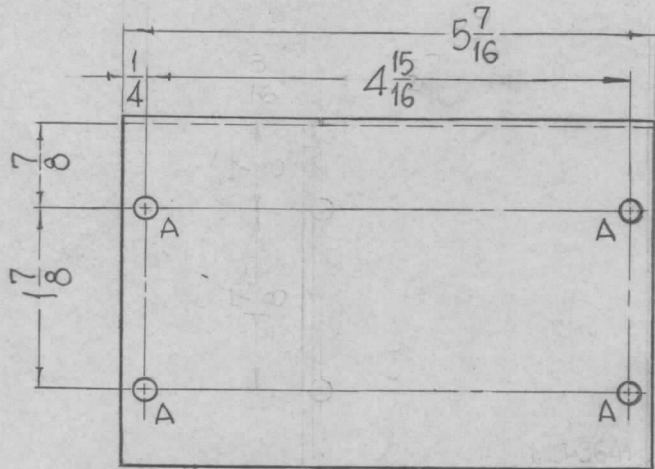
REQ. PER UNIT	USED ON			MS-3639	O
	MODEL	ASS'Y. NO.	DATE		
1	GPT-200K	AX-395	11-22-63		



METAL STAMP TMC PART NO.
1/8 HIGH GOTHIC.

REQ.	ITEM	PART NO.	F. BUDETTI DESCRIPTION				SYMBOL
		1/8 THICK	THE TECHNICAL MATERIEL CORP.				
		STOCK SIZE	MAMARONECK, NEW YORK				
0	ORIGINAL RELEASE	5.16.64	WJB	HOT ROLLED COPPER			STRAP, CONNECTOR ELEC.
SYM	DESCRIPTION	DATE	CH. NO.	DRAFTS	CHECKER	ENG. APP.	MATERIAL
UNLESS OTHERWISE SPECIFIED DIMENSIONS ARE IN INCHES AND INCLUDE CHEMICALLY APPLIED OR PLATED FINISHES		SCALE	1/2" = 1"				
DECIMALS	FRACTIONS	CODE	S-245 SILVER PLATE				
.X ± .05	± 1/64		FINISH & SPEC. NO.				
.XX ± .01	ANGLES		ELEC. DES. APP.				
.XXX ± .005	± 0° 30'		MECH. DES. APP.				
						SRG	aa
						DRWN	CHKD
						FINAL APPROVAL	
						MS-3639	O

REQ. PER UNIT	USED ON			MS-3641	0
	MODEL	ASS'Y. NO.	DATE		
1	GPT-200K (AX-395)	A-3478	12-4-63		



HOLES~
A- 11/64 DIA. — 4REQ.

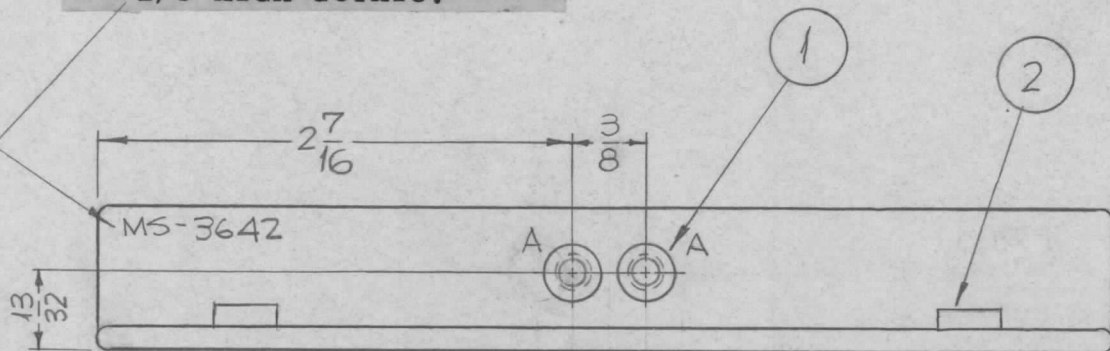
METAL STAMP TMC PART NO.
1/8 HIGH GOTHIC, ON REAR

- UNLESS OTHERWISE SPECIFIED:
1. USE MATERIAL THICKNESS FOR MAXIMUM RADIUS ON ALL BENDS.
 2. ALL ANGULAR BENDS 90°.
 3. REMOVE ALL BURRS AND SHARP EDGES.

SYM	DESCRIPTION	DATE	CH. NO.	DRAFTS	CHECKER	ENG. APP.	REQ. ITEM	PART NO.	F. BUDETTI	DESCRIPTION	SYMBOL	
								.064 THICK		THE TECHNICAL MATERIEL CORP. MAMARONECK, NEW YORK		
								STOCK SIZE				
○	ORIGINAL RELEASE FOR PRODUCTION	3/23/64						ALUMINUM		COVER FRONT, SHORTING RELAY		
	UNLESS OTHERWISE SPECIFIED DIMENSIONS ARE IN INCHES AND INCLUDE CHEMICALLY APPLIED OR PLATED FINISHES	SCALE	1/2" = 1"					5052-H32		SRG	aa qrb	RDC 3/23/64
							TYPE & TEMPER	HEAT TREAT. SPEC.	DRAWN	CHECKED	FINAL APPROVAL	
	DECIMALS .X ± .05 .XX ± .01 .XXX ± .005	FRACTIONS ± 1/64 ANGLES ± 0° 30'	CODE					5-404 YELLOW IRIDITE		23 LB	aw 2/26	MS-3641 0
	TOLERANCES		A					FINISH & SPEC. NO.		ELEC. DES. APP.	MECH. DES. APP.	

REQ. PER UNIT	USED ON			MS-3642 0
	MODEL	ASS'Y. NO.	DATE	
2	GPT-200K	AS-124	12-11-63	

METAL STAMP TMC PART NO.
1/8 HIGH GOTHIC.



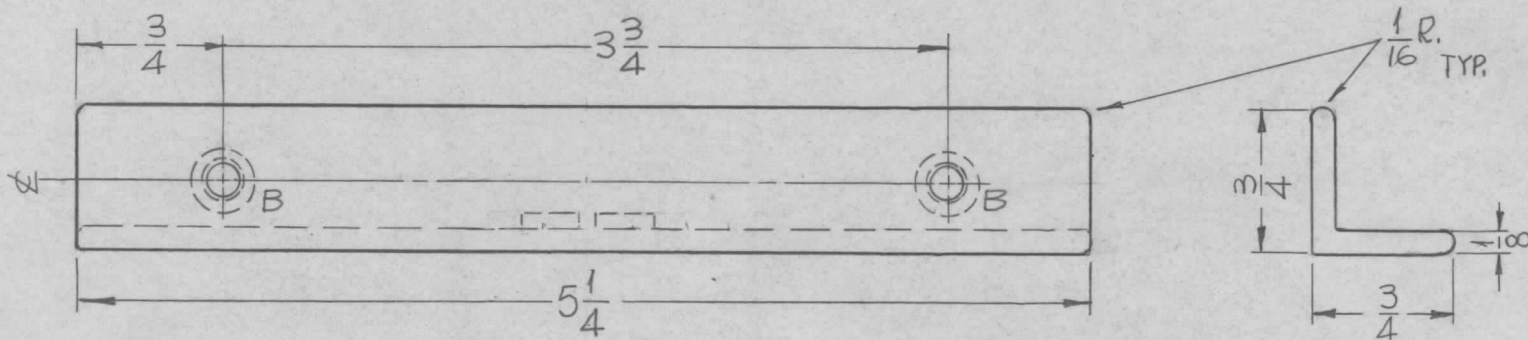
HOLES:

A-.224-.221 DIA.—2REQ

B-.250-.253 DIA.—2REQ.

NOTE:

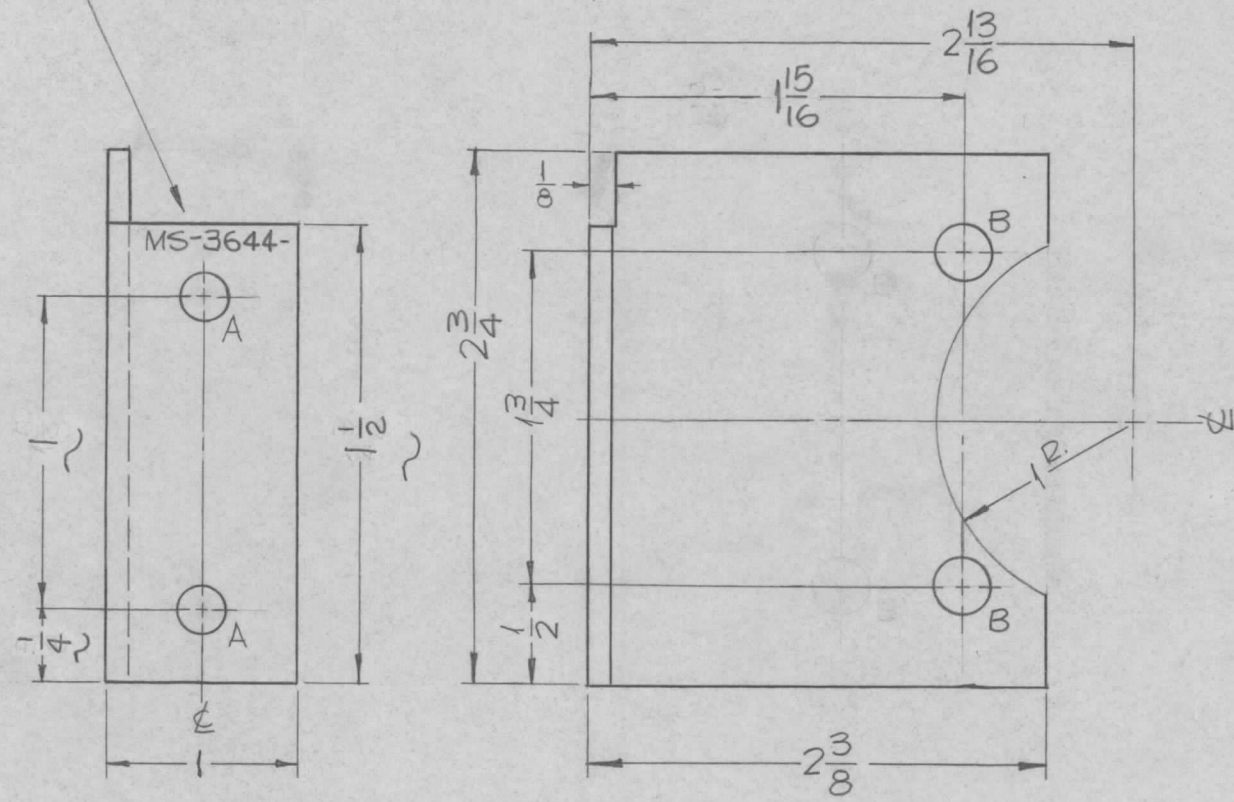
MOUNT INSERTS AFTER FINISHING.



2	2	NT-129-1032-6	NUT ROUND, SWAGE TYPE	
2	1	NT-129-832-6	NUT ROUND, SWAGE TYPE	
REQ. ITEM		PART NO.	F. BUDETTI DESCRIPTION	SYMBOL
AS NOTED			THE TECHNICAL MATERIEL CORP.	
STOCK SIZE			MAMARONECK, NEW YORK	
ALUMINUM			BRACKET, SPRING MTG	
MATERIAL				
UNLESS OTHERWISE SPECIFIED DIMENSIONS ARE IN INCHES AND INCLUDE CHEMICALLY APPLIED OR PLATED FINISHES		SCALE	1"=1"	
0	ORIG. RELEASE FOR PROD.	5-16-64	SRG	
SYM	DESCRIPTION	DATE	CH. NO.	DRAFTS
				CHECKER
				ENG. APP.
DECIMALS		FRACTIONS		CODE
.X ± .05		± 1/64		A
.XX ± .01		ANGLES		
.XXX ± .005		± 0° 30'		
TOLERANCES				
5052-H32		SRG		aa
TYPE & TEMPER		HEAT TREAT. SPEC.		FINAL APPROVAL
S-404 YELLOW IRIDITE		DRAWN		MS-3642 0
FINISH & SPEC. NO.		ELEC. DES. APP.		MECH. DES. APP.

REQ. PER UNIT	USED ON			MS-3644 A
	MODEL	ASS'Y. NO.	DATE	
1	GPT-200K	AX-395	11-22-63	

METAL STAMP TMC PART NO. W/LATEST REV. LETTER.
1/8 HIGH GOTHIC.

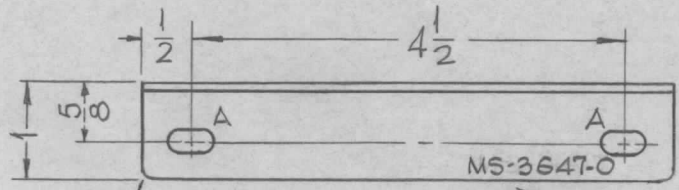


HOLES:
A - 15/64 DIA. ——— 2 REQ.
B - 9/32 DIA. ——— 2 REQ.

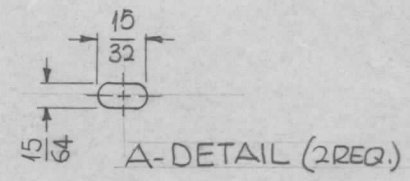
UNLESS OTHERWISE SPECIFIED:
USE MATERIAL THICKNESS FOR
MAXIMUM RADIUS ON ALL BENDS
ALL ANGULAR BENDS 90°.
REMOVE ALL BURRS AND SHARP
EDGES.

SYM	DESCRIPTION	DATE	CH. NO.	DRAFTS	CHECKER	ENG. APP.	REQ. ITEM	PART NO.	F. BUDETTI	DESCRIPTION	SYMBOL	
							1/8 THICK			THE TECHNICAL MATERIEL CORP. MAMARONECK, NEW YORK		
A	DIM. 1/4 WAS 3/8, 1 W. 1 5/8, 1/2 W. 2 3/8	7.13.64	11754	WJB	JCS		STOCK SIZE					
O	ORIGINAL RELEASE	5.16.64		WJB			ALUMINUM			BRACKET, SUPPORT		
							MATERIAL			1 5/8 LINE		
	UNLESS OTHERWISE SPECIFIED DIMENSIONS ARE IN INCHES AND INCLUDE CHEMICALLY APPLIED OR PLATED FINISHES	SCALE	1" = 1"					5052-H32		SRG	aa	Rt
							TYPE & TEMPER	HEAT TREAT. SPEC.	DRAWN	CHECKED	FINAL APPROVAL	
	DECIMALS .X ± .05 .XX ± .01 .XXX ± .005	FRACTIONS ± 1/64 ANGLES ± 0° 30'	CODE				S404 YELLOW IRIDITE					
	TOLERANCES						FINISH & SPEC. NO.		ELEC. DES. APP.	MECH. DES. APP.	MS-3644 A	

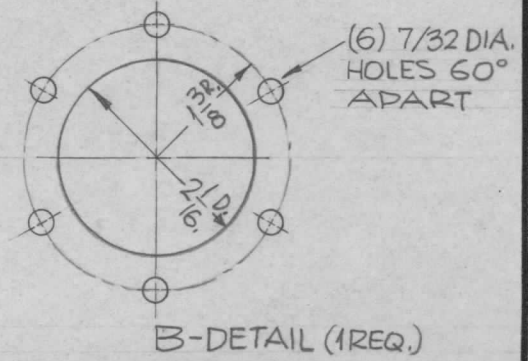
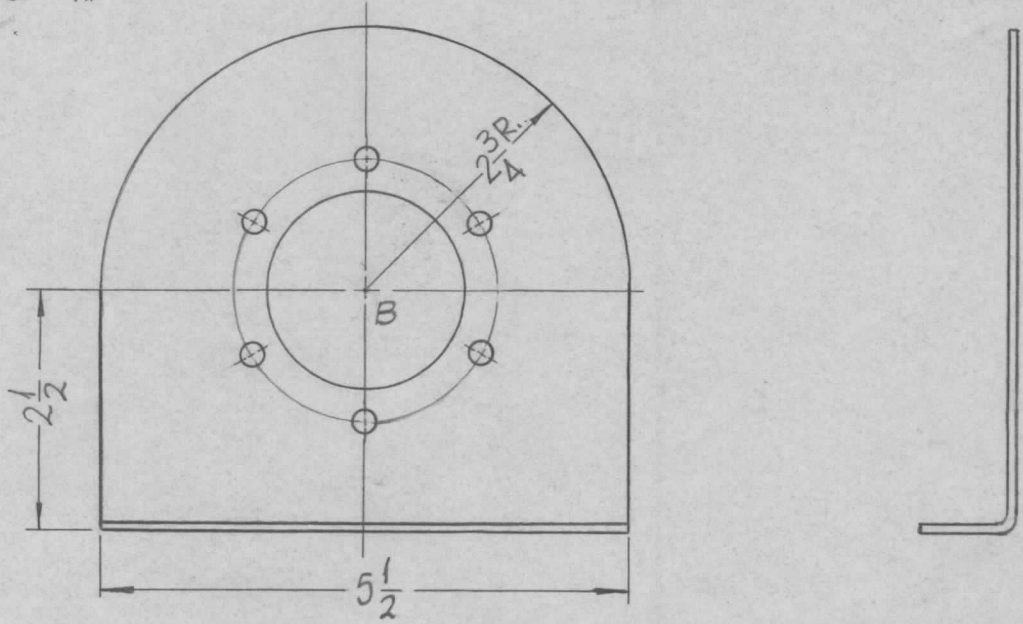
REQ. PER UNIT	USED ON			MS-3647 0
	MODEL	ASS'Y. NO.	DATE	
1	GPT-200K(AK-392)	A-3159	12-27-63	



METAL STAMP TMC PART NO. 1/8 HIGH GOTHIC.



3 R. 32 TYP

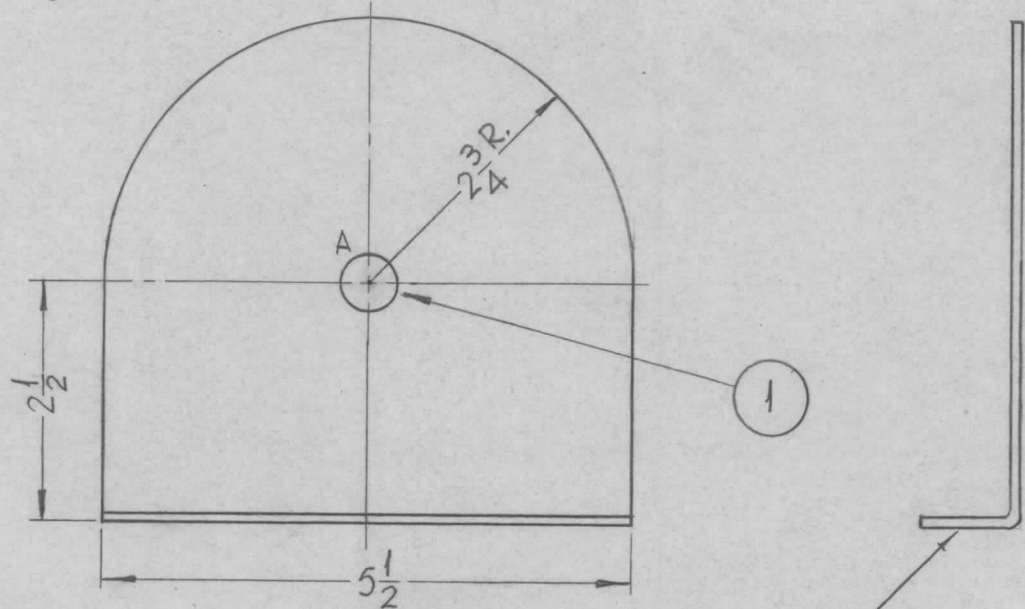
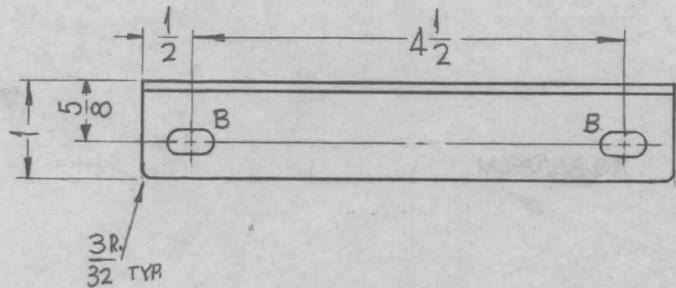


- UNLESS OTHERWISE SPECIFIED:
1. USE MATERIAL THICKNESS FOR MAXIMUM RADIUS ON ALL BENDS.
 2. ALL ANGULAR BENDS 90°.
 3. REMOVE ALL BURRS AND SHARP EDGES.

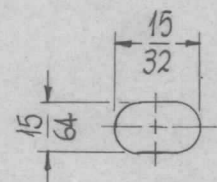
REF-TMC NO. LD-1454

SYM	DESCRIPTION	DATE	CH. NO.	DRAFTS	CHECKER	ENG. APP.	REQ. ITEM	PART NO.	F. BUDETTI	DESCRIPTION	SYMBOL	
							1/8 THICK			THE TECHNICAL MATERIEL CORP. MAMARONECK, NEW YORK		
							STOCK SIZE					
							ALUMINUM				BRACKET, CAPACITOR MTG.	
○	ORIGINAL RELEASE FOR PRODUCTION	3-6-64										
	UNLESS OTHERWISE SPECIFIED DIMENSIONS ARE IN INCHES AND INCLUDE CHEMICALLY APPLIED OR PLATED FINISHES	SCALE	1/2" = 1"					5052-H32		SRG	aa	RJC 4-7-64
	DECIMALS .X ± .05 .XX ± .01 .XXX ± .005	FRACTIONS ± 1/64 ANGLES ± 0° 30'	CODE	A				5404 YELLOW IRIDITE		OB PB		MS-3647 0
	TOLERANCES						FINISH & SPEC. NO.		ELEC. DES. APP.	MECH. DES. APP.		

REQ. PER UNIT	USED ON			MS-3648 0
	MODEL	ASS'Y. NO.	DATE	
1	GPT-2001K(A-X-392)	A-3159	12-27-63	



HOLE:
A- 9/16 DIA. (1REQ.)



B-DETAIL
(2REQ.)

METAL STAMP TMC PART NO.
1/8 HIGH GOTHIC.
MS-3648-0

- UNLESS OTHERWISE SPECIFIED:
1. USE MATERIAL THICKNESS FOR MAXIMUM RADIUS ON ALL BENDS.
 2. ALL ANGULAR BENDS 90°.
 3. REMOVE ALL BURRS AND SHARP EDGES

						1	1	BB-117-14	BEARING, NYLON	
						REQ. ITEM		PART NO.	F. BUDETTI	DESCRIPTION
								1/8 THICK	THE TECHNICAL MATERIEL CORP. MAMARONECK, NEW YORK	
								ALUMINUM	BRACKET SUPPORT, CAPACITOR	
								MATERIAL		
								5052-H32	SRG	aa gcb
								TYPE & TEMPER	HEAT TREAT. SPEC.	FINAL APPROVAL
								5404 YELLOW IRIDITE	DBTB	MS-3648 0
								FINISH & SPEC. NO.	ELEC. DES. APP.	MECH. DES. APP.

UNLESS OTHERWISE SPECIFIED
DIMENSIONS ARE IN INCHES AND INCLUDE
CHEMICALLY APPLIED OR PLATED FINISHES

DECIMALS
.X ± .05
.XX ± .01
.XXX ± .005

FRACTIONS
± 1/64
ANGLES
± 0° 30'

TOLERANCES

CODE
A

SCALE
1/2" = 1"

DATE
3-2-64

CH. NO.

DRAFTS

CHECKER

ENG. APP.

5052-H32

TYPE & TEMPER

HEAT TREAT. SPEC.

5404 YELLOW IRIDITE

FINISH & SPEC. NO.

SRG

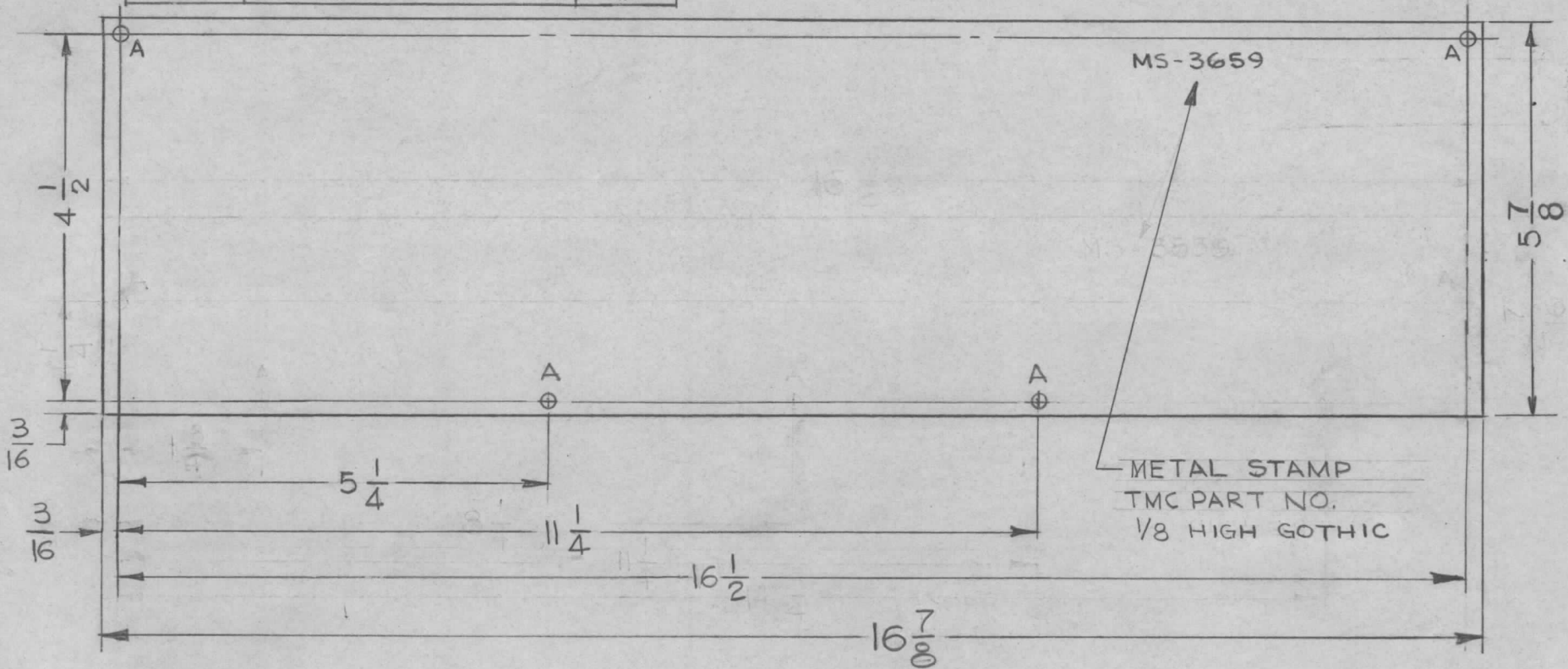
aa gcb

MECH. DES. APP.

MS-3648 0

HOLE	DESCRIPTION	REQ.
A	11/64 DIA.	4

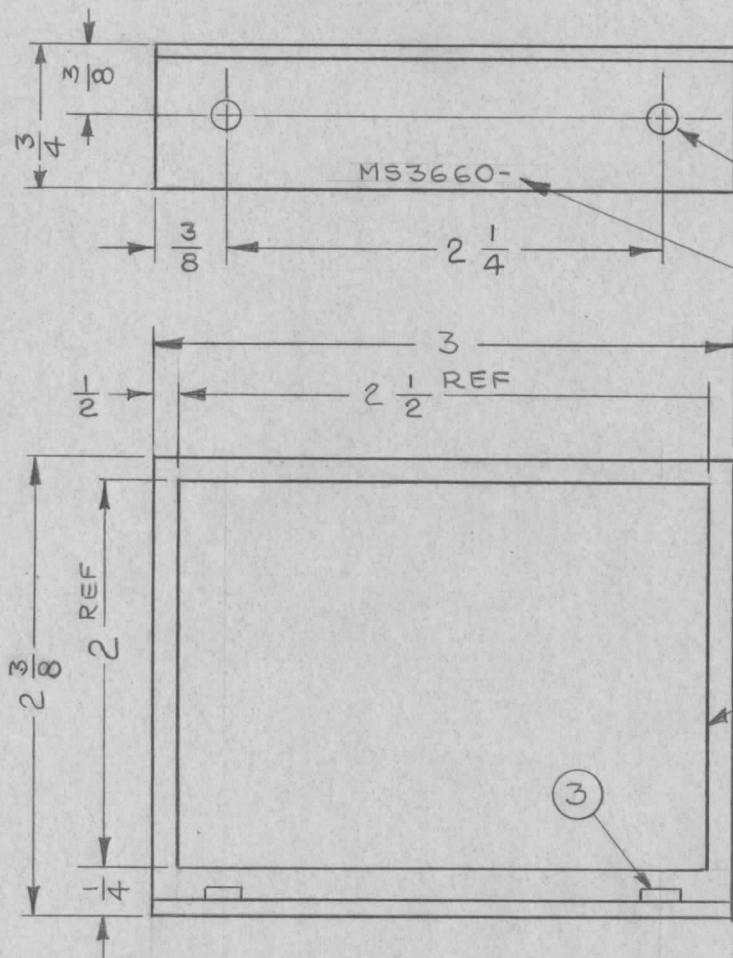
REQ. PER UNIT	USED ON			MS-3659	0
	MODEL	ASS'Y. NO.	DATE		
2	MPS-1		12-30-63		



REMOVE ALL BURRS AND SHARP EDGES.

REQ.	ITEM	PART NO.	AALTONEN				DESCRIPTION	SYMBOL	
0	ORIGINAL RELEASE FOR PRODUCTION	4-20-64	0	A.M.	@				
X2	5 7/8 WAS 2 7/16, 4 1/2 WAS 1 1/4	2-6-64		T.R.					
X1	3 "A" HOLES DELETED	1-6-63		G.D.L.					
SYM	DESCRIPTION	DATE	CH. NO.	DRAFTS	CHECKER	ENG. APP.			
UNLESS OTHERWISE SPECIFIED DIMENSIONS ARE IN INCHES AND INCLUDE CHEMICALLY APPLIED OR PLATED FINISHES		SCALE		DO NOTE SCALE					
DECIMALS .X ± .05 .XX ± .01 .XXX ± .005		FRACTIONS ± 1/64 ANGLES ± 0° 30'		TOLERANCES		CODE A			
		5052-H32		— # —		G.D.L.	JDe 1/14/64 Rde		
		S404 IRIDITE 14-2AL COAT		FINISH & SPEC. NO.		DRAWN		CHECKED	FINAL APPROVAL
						ELEC. DES. APP.		MECH. DES. APP.	MS-3659 0

REQ. PER UNIT	USED ON			MS3660	Ø
	MODEL	ASS'Y. NO.	DATE		
	BSU-1				
	BPS(-)-1				



.191-.194 DIA.
(2 PLACES)

METAL STAMP
TMC PART NO.,
WITH LATEST
REVISION LETTER.

UNLESS OTHERWISE SPECIFIED:

1. USE MATERIAL THICKNESS FOR MAXIMUM RADIUS ON ALL BENDS.
2. ALL ANGULAR BENDS 90°.
3. REMOVE ALL BURRS AND SHARP EDGES.
4. MOUNT INSERTS AFTER FINISHING.

REF: LD1565

2	3	NT-129-632-4	NUT, PLAIN SPLINE TYPE
X	2	GL-101	CEMENT, PLIOBOND
X	1	IM-179-4	INSULATION SHEET ELEC

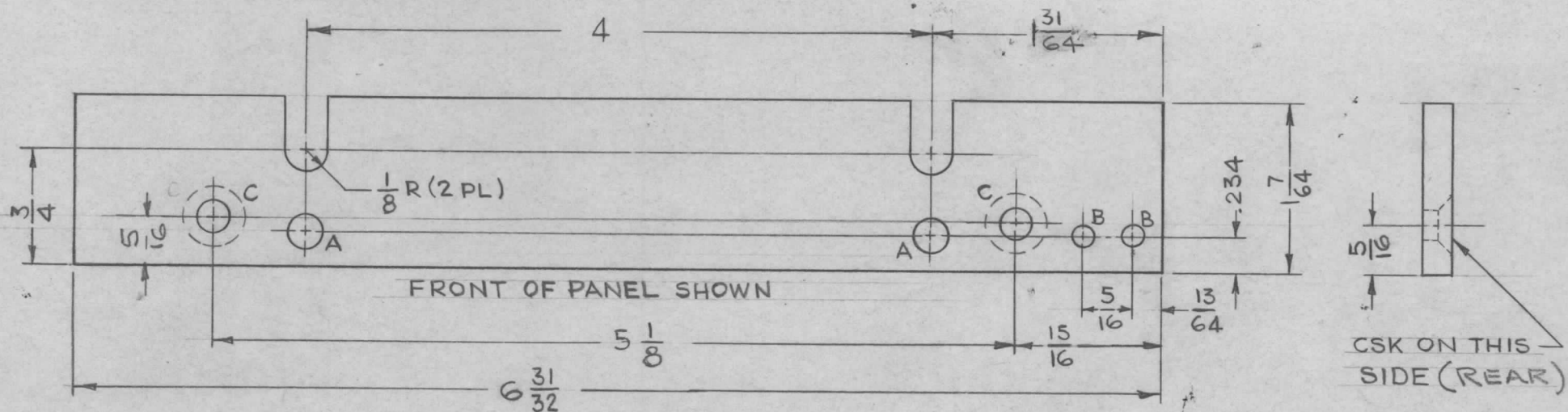
Ø	ORIGINAL RELEASE FOR PRODUCTION	10-29-64	Ø	g.f.		
X	EXPER. RELEASE	7.13.64		hjb		
SYM	DESCRIPTION	DATE	CH. NO.	DRAFTS	CHECKER	ENG. APP.
UNLESS OTHERWISE SPECIFIED DIMENSIONS ARE IN INCHES AND INCLUDE CHEMICALLY APPLIED OR PLATED FINISHES		SCALE				
DECIMALS .X ± .05 .XX ± .01 .XXX ± .005		FRACTIONS ± 1/64 ANGLES ± 0° 30'		CODE A		
TOLERANCES						

REQ. ITEM	PART NO.	M. GELLMAN	DESCRIPTION	SYMBOL
	.081 THK	THE TECHNICAL MATERIEL CORP. MAMARONECK, NEW YORK		
	STOCK SIZE			
	ALUMINUM	BRACKET, SHIELD-METER		
	MATERIAL			
5052-H32		hjb	7.13.64 @ 10-29-64	RJC
TYPE & TEMPER	HEAT TREAT. SPEC.	DRAWN	CHECKED	FINAL APPROVAL
	YELLOW IRIDITE			
FINISH & SPEC. NO.	ELEC. DES. APP.	MECH. DES. APP.	MS3660 Ø	

HOLE	DESCRIPTION	REQ'D
A	.201 DIA.	2
B	1/8 DIA.	2
C	.196 DIA., CSK 82° TO .390 DIA.	2

REQ. PER UNIT	USED ON		
	MODEL	ASS'Y. NO.	DATE
1	MNF-1		12-27-63

MS-3661



FINISH NOTES:

1. S404 - IRIDITE 14-2 AL-COAT.
2. S114 - ZINC CHROMATE PRIMER) FRONT AND
3. S115 - SMOOTH GRAY ENAMEL) EDGES ONLY

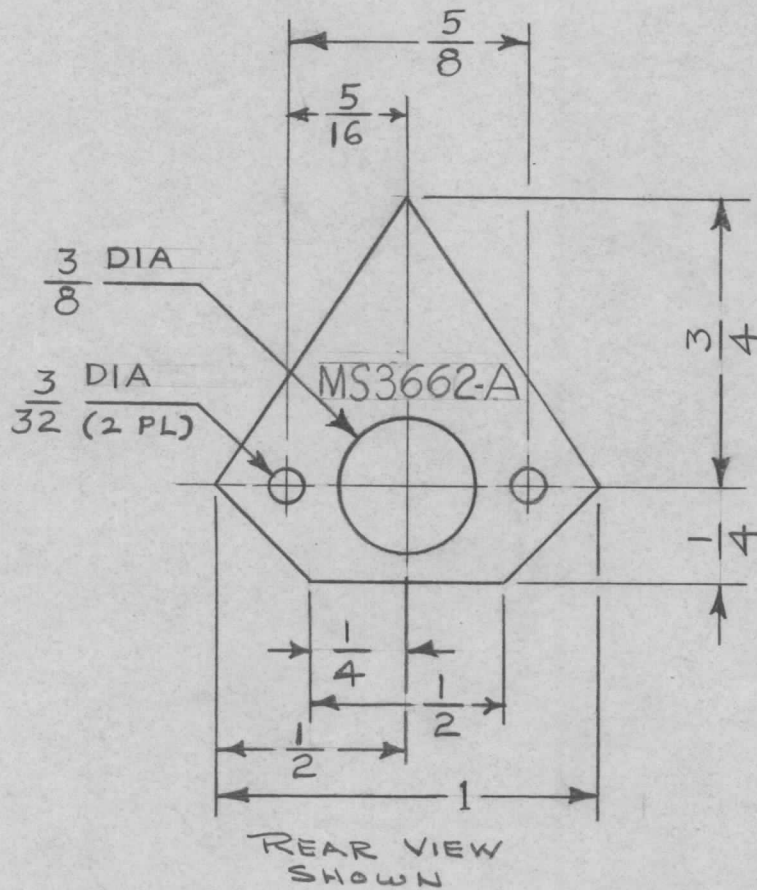
MS-3661

METAL STAMP TMC PART NO.
1/8 HIGH GOTHIC.

REMOVE ALL BURRS AND SHARP EDGES.

REQ.	ITEM	PART NO.	AALTONEN	DESCRIPTION	SYMBOL	
		3/16 THICK		THE TECHNICAL MATERIEL CORP.		
		STOCK SIZE		MAMARONECK, NEW YORK		
		ALUMINUM		PANEL, FRONT END		
		MATERIAL		LEFT HAND		
SYM	DESCRIPTION	DATE	CH. NO.	DRAFTS	CHECKER	ENG. APP.
	UNLESS OTHERWISE SPECIFIED DIMENSIONS ARE IN INCHES AND INCLUDE CHEMICALLY APPLIED OR PLATED FINISHES	SCALE	1-1			
	DECIMALS .X ± .05 .XX ± .01 .XXX ± .005	FRACTIONS ± 1/64 ANGLES ± 0° 30'	CODE	A		
	TOLERANCES					
		2024-T3	—			
		TYPE & TEMPER	HEAT TREAT. SPEC.	DRAWN	CHECKED	FINAL APPROVAL
		SEE NOTE		TRAMIREZ	12/27/63	RAC 2/21/64
		FINISH & SPEC. NO.		ELEC. DES. APP.	MECH. DES. APP.	MS-3661

REQ. PER UNIT 4	USED ON			MS-3662	A
	MODEL MNF-1	ASS'Y. NO.	DATE 12-27-63		



FINISH NOTES:

1. S404 - IRIDITE 14-2 AL-COAT.
2. S114 - ZINC CHROMATE PRIMER.
3. LUSTERLESS WHITE, NO. 37875, PER FED. STD-595.

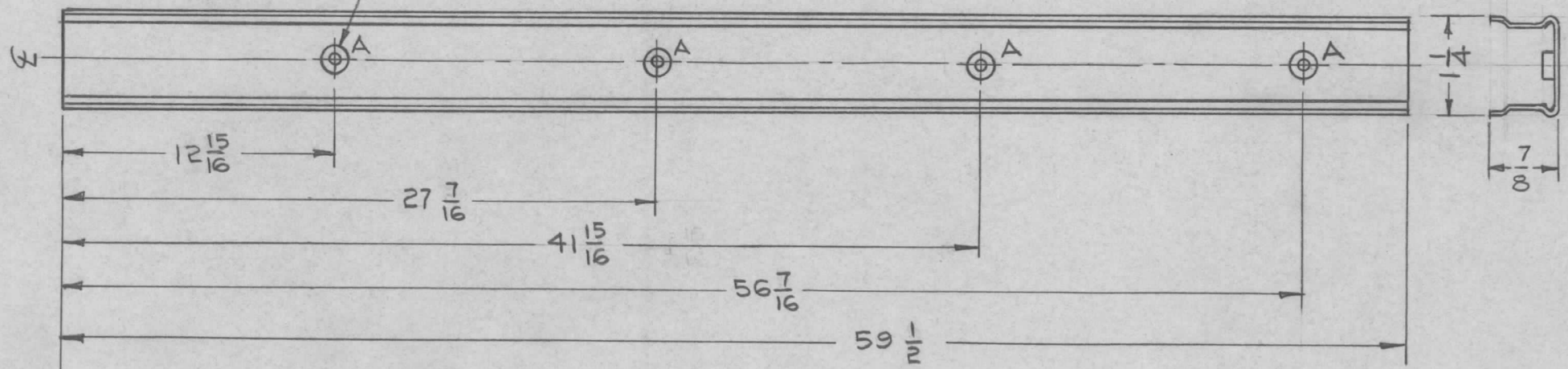
METAL STAMP TMC PART NO.
3/32 HIGH GOTHIC,
LOCATED AS SHOWN.

REQ.	ITEM	PART NO.	AALTONEN DESCRIPTION			SYMBOL
		.040 THK	THE TECHNICAL MATERIEL CORP.			
		STOCK SIZE	MAMARONECK, NEW YORK			
A	S404 & S114 ADDED MARKING PROCESS WAS S727	ALUMINUM	POINTER, DIAL			
SYM	DESCRIPTION	DATE	CH. NO.	DRAFTS	CHECKER	ENG. APP.
	UNLESS OTHERWISE SPECIFIED DIMENSIONS ARE IN INCHES AND INCLUDE CHEMICALLY APPLIED OR PLATED FINISHES	SCALE	2:1			
DECIMALS .X ± .05 .XX ± .01 .XXX ± .005	TOLERANCES	FRACTIONS ± 1/64 ANGLES ± 0° 30'	CODE A			
		5052-H32		TYPE & TEMPER	HEAT TREAT. SPEC.	
	SEE NOTE			DRAWN	CHECKED	FINAL APPROVAL
				ELEC. DES. APP.	MECH. DES. APP.	MS-3662 A

REQ. PER UNIT	USED ON			MS 3663	Ø
	MODEL	ASS'Y. NO.	DATE		
	RAK-33A		12-29-63		

1 MOUNT ITEM 1 IN ALL "A" HOLES AS SHOWN

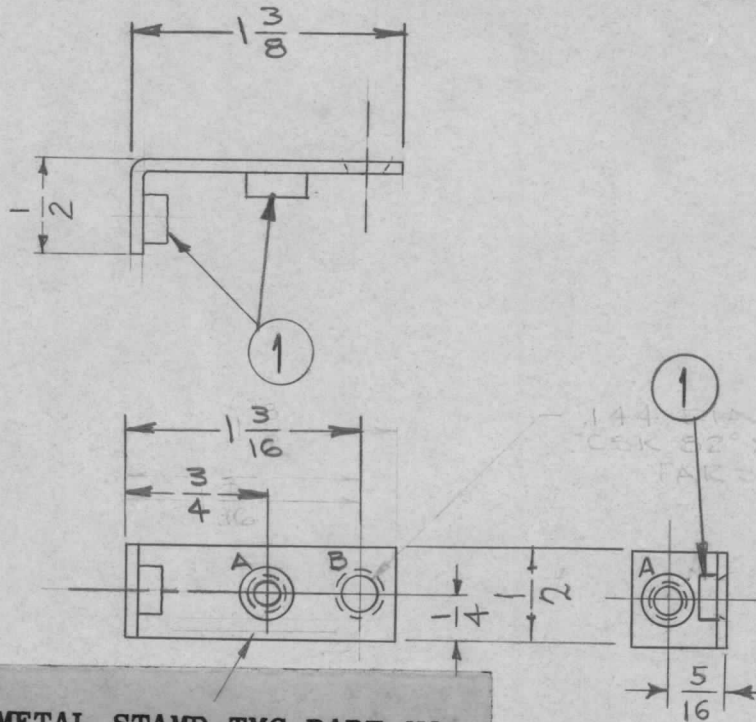
A HOLE = .191-.194 DIA, 4 REQD



REF: TMC PART NO. PO 160

						4	1	NT-129-632-3	NUT, ROUND, SWAGE TYPE	A		
						REQ. ITEM		PART NO.	STURMER DESCRIPTION	SYMBOL		
								SEE REF PART NO.	THE TECHNICAL MATERIEL CORP. MAMARONECK, NEW YORK			
								STOCK SIZE				
Ø	ORIGINAL RELEASE FOR PRODUCTION	8.27.64	+	JB				SEE REF PART NO.	CHANNEL, STRIP, A.C.			
SYM	DESCRIPTION	DATE	CH. NO.	DRAFTS	CHECKER	ENG. APP.		MATERIAL	RAK-33A			
	UNLESS OTHERWISE SPECIFIED DIMENSIONS ARE IN INCHES AND INCLUDE CHEMICALLY APPLIED OR PLATED FINISHES	SCALE	NONE									
	DECIMALS .X ± .05 .XX ± .01 .XXX ± .005	FRACTIONS ± 1/64 ANGLES ± 0° 30'	CODE	A								
	TOLERANCES							TYPE & TEMPER	HEAT TREAT. SPEC.	DRAWN	CHECKED	FINAL APPROVAL
								SEE REF PART NO.				
								FINISH & SPEC. NO.	ELEC. DES. APP.	MECH. DES. APP.	MS 3663	Ø

REQ. PER UNIT	USED ON			MS-3665	A
	MODEL	ASS'Y. NO.	DATE		
4	RAK-35A		1-25-64		



A- .191 - .194 DIA. - 2 REQ. F.H.S. 110
 B- .144 DIA THRU, C'SINK 82° X
 .284 DIA - 1 REQ.

METAL STAMP TMC PART NO.
 1/8 HIGH GOTHIC, WITH
 LATEST REVISION LETTER.

UNLESS OTHERWISE SPECIFIED:

1. USE MATERIAL THICKNESS FOR MAXIMUM RADIUS ON ALL BENDS.
2. ALL ANGULAR BENDS 90°.
3. REMOVE ALL BURRS AND SHARP EDGES.
4. MOUNT INSERTS AFTER FINISHING.

						2	1	NT-129-632-4	NUT, SWAGE	A
						REQ. ITEM	PART NO.		I. JOHNSON DESCRIPTION	SYMBOL
						.064 THK			THE TECHNICAL MATERIEL CORP.	
						STOCK SIZE			MAMARONECK, NEW YORK	
						ALUMINUM			BRACKET, MOUNTING	
						MATERIAL				
						5052-H32	---		Drawn @ 3-10-64	3/10/64
						TYPE & TEMPER	HEAT TREAT. SPEC.	DRAWN	CHECKED	FINAL APPROVAL
						3404 YEL IRIDITE		MS-3665		A
						FINISH & SPEC. NO.		ELEC. DES. APP.	MECH. DES. APP.	
UNLESS OTHERWISE SPECIFIED DIMENSIONS ARE IN INCHES AND INCLUDE CHEMICALLY APPLIED OR PLATED FINISHES						SCALE				
						1:1				
DECIMALS		FRACTIONS		CODE						
.X ± .05		± 1/64		A						
.XX ± .01		ANGLES								
.XXX ± .005		± 0° 30'								
TOLERANCES										

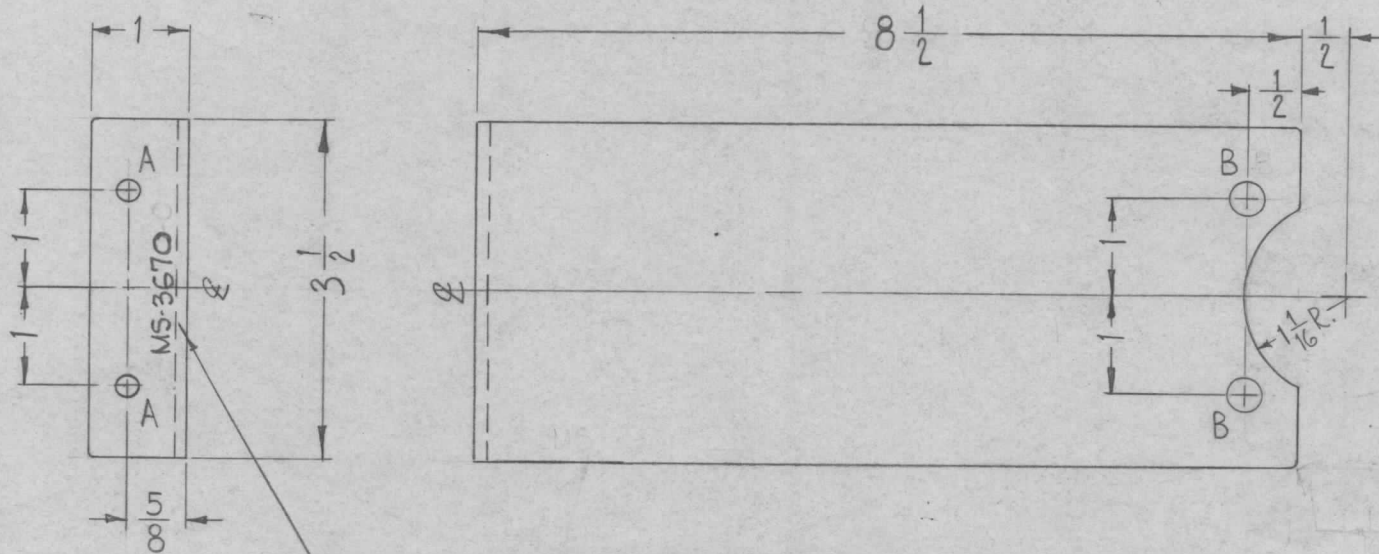
HOLE	DESCRIPTION	REQ.
A	7/32 DIA.	2
B	11/32 DIA.	2

REQ. PER UNIT	USED ON		
	MODEL	ASS'Y. NO.	DATE
	GPT4DK() 4 (AX510)	A3424	12-28-63

MS-3670 0

UNLESS OTHERWISE SPECIFIED:

1. USE MATERIAL THICKNESS FOR MAXIMUM RADIUS ON ALL BENDS.
2. ALL ANGULAR BENDS 90°.
3. REMOVE ALL SHARP EDGES.



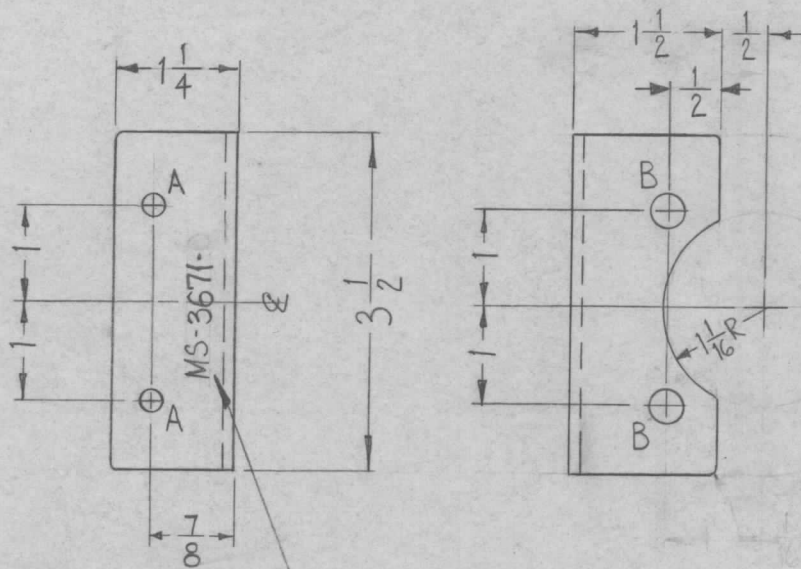
METAL STAMP TMC PART NO.
& LATEST REV.
1/8 HIGH, GOTHIC

REQ.	ITEM	PART NO.	F. BUDETTI	DESCRIPTION	SYMBOL
		1/8 THK		THE TECHNICAL MATERIEL CORP. MAMARONECK, NEW YORK	BRACKET, SUPPORT
		STOCK SIZE			
		ALUMINUM			
		MATERIAL			
		5052-H32	W.A. FRANCO	JCB	RAC
		TYPE & TEMPER		CHECKED	FINAL APPROVAL
		S404 YELLOW IRIDITE		MECH. DES. APP.	MS-3670 0
		FINISH & SPEC. NO.		ELEC. DES. APP.	

HOLE	DESCRIPTION	REQ.
A	7/32 DIA.	2
B	11/32 DIA.	2

REQ. PER UNIT	USED ON		
	MODEL	ASS'Y. NO.	DATE
	GPT-40K()4 (AX510)	A3424	12-28-63

MS-3671 0



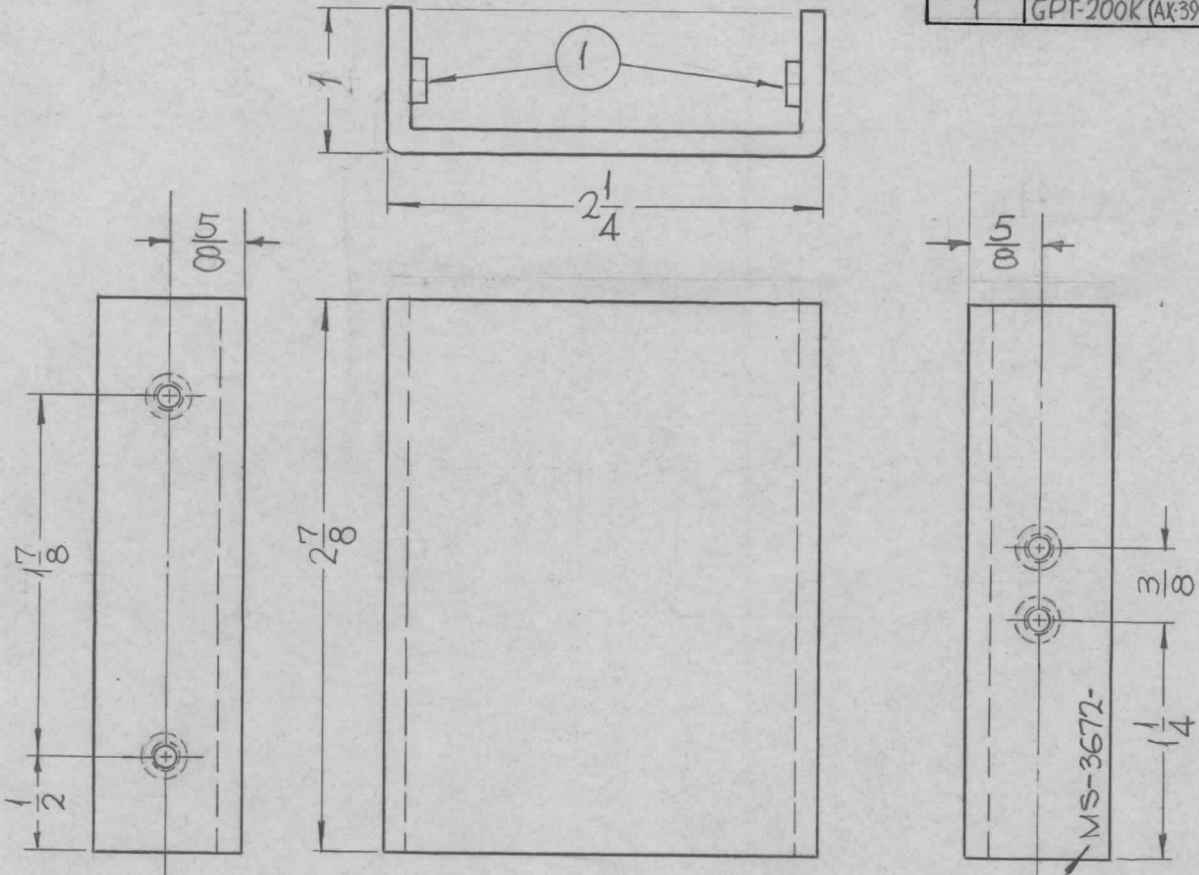
UNLESS OTHERWISE SPECIFIED:

1. USE MATERIAL THICKNESS FOR MAXIMUM RADIUS ON ALL BENDS.
2. ALL ANGULAR BENDS 90°.
3. REMOVE ALL SHARP EDGES.

METAL STAMP TMC PART NO. & LATEST REV.
1/8 HIGH GOTHIC.

REQ.	ITEM	PART NO.	F. BUDETTI DESCRIPTION			SYMBOL
		1/8 THK.	THE TECHNICAL MATERIEL CORP. MAMARONECK, NEW YORK			BRACKET, SUPPORT
		STOCK SIZE				
		ALUMINUM				
		MATERIAL				
		5052-H32	W.A. FRANCO	gcb	RAL	
		TYPE & TEMPER	HEAT TREAT. SPEC.	DRAWN	CHECKED	FINAL APPROVAL
		S404 YELLOW IRIDITE			arc 2/26/64	MS-3671 0
		FINISH & SPEC. NO.	ELEC. DES. APP.	MECH. DES. APP.		

REQ. PER UNIT	USED ON			MS-3672 0
	MODEL	ASS'Y. NO.	DATE	
1	GPT-200K (AX-395)	A-3258	1-7-64	



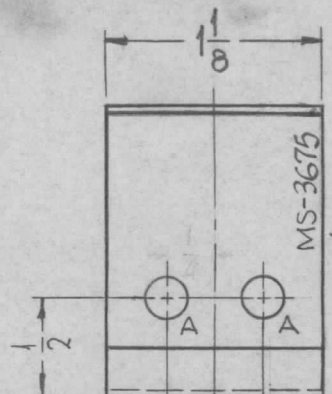
HOLES:
.221-.224 DIA. (4REQ.)

METAL STAMP TMC PART NO.
W/LATEST REV. LETTER
1/8 HIGH GOTHIC.

- UNLESS OTHERWISE SPECIFIED:
1. USE MATERIAL THICKNESS FOR MAXIMUM RADIUS ON ALL BENDS.
 2. ALL ANGULAR BENDS 90°.
 3. REMOVE ALL BURRS AND SHARP EDGES
 4. MOUNT INSERTS AFTER FINISHING.

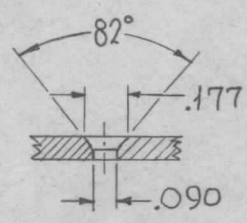
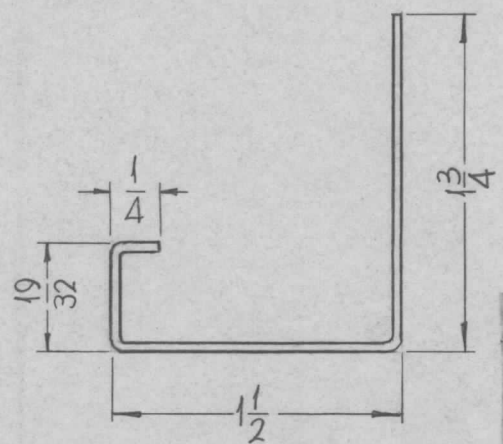
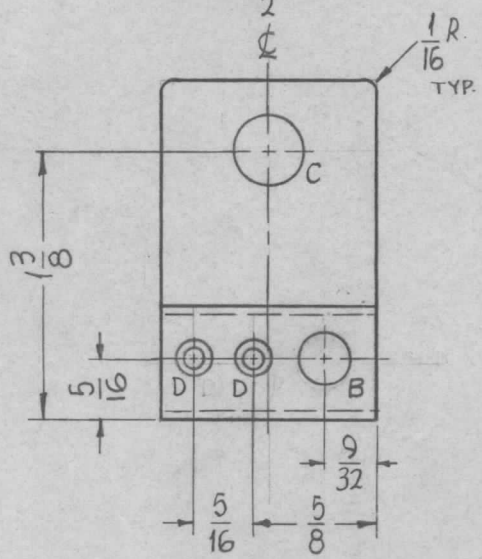
4	1	NT-129-832-6	NUT, ROUND, SWAGE TYPE		
REQ.	ITEM	PART NO.	F. BUDETTI DESCRIPTION		SYMBOL
		1/8 THICK	THE TECHNICAL MATERIEL CORP.		
		STOCK SIZE	MAMARONECK, NEW YORK		
0	ORIG. RELEASE FOR PROD.	5-6-64	SRG	BRACKET, SPRING SUPPORT	
SYM	DESCRIPTION	DATE	CH. NO.	DRAFTS	CHECKER
UNLESS OTHERWISE SPECIFIED DIMENSIONS ARE IN INCHES AND INCLUDE CHEMICALLY APPLIED OR PLATED FINISHES		SCALE	1"=1"		
DECIMALS	TOLERANCES	FRACTIONS	CODE	5052-H32	
.X ± .05		± 1/64	A	TYPE & TEMPER	HEAT TREAT. SPEC.
.XX ± .01		ANGLES		S404 YELLOW IRIDITE	
.XXX ± .005		± 0° 30'		FINISH & SPEC. NO.	
				SRG	aa
				DRAWN	CHECKED
				MS-3672 0	FINAL APPROVAL
				ELEC. DES. APP.	MECH. DES. APP.

REQ. PER UNIT	USED ON			MS-3675 ○
	MODEL	ASS'Y. NO.	DATE	
1	GPT-200K (AT-105)	A-2765	3-16-64	



METAL STAMP TMC PART NO. 1/8 HIGH GOTHIC.

HOLES:
 A~ 3/16 DIA. (2REQ.)
 B~ 1/4 DIA. (1REQ.)
 C~ 11/32 DIA. (1REQ.)
 D~ SEE DETAIL



D-DETAIL (2REQ.)

- UNLESS OTHERWISE SPECIFIED:
1. USE MATERIAL THICKNESS FOR MAXIMUM RADIUS ON ALL BENDS.
 2. ALL ANGULAR BENDS 90°.
 3. REMOVE ALL BURRS AND SHARP EDGES.

REF: LD-1452

SYM	DESCRIPTION	DATE	CH. NO.	DRAFTS	CHECKER	ENG. APP.	REQ. ITEM	PART NO.	F. BUDETTI	DESCRIPTION	SYMBOL
							.062 THICK		THE TECHNICAL MATERIEL CORP.		
							STOCK SIZE		MAMARONECK. NEW YORK		
							ALUMINUM		BRACKET, CONNECTOR MTG.		
							MATERIAL				
							5052-H32	SRG	aa	RJC	
							TYPE & TEMPER	HEAT TREAT. SPEC.	DRAWN	CHECKED	FINAL APPROVAL
							S-404 YELLOW IRIDITE				
							FINISH & SPEC. NO.		ELEC. DES. APP.	MECH. DES. APP.	MS-3675 ○

ORIGINAL RELEASE FOR PRODUCTION 4/27/64

UNLESS OTHERWISE SPECIFIED DIMENSIONS ARE IN INCHES AND INCLUDE CHEMICALLY APPLIED OR PLATED FINISHES

SCALE 1"=1"

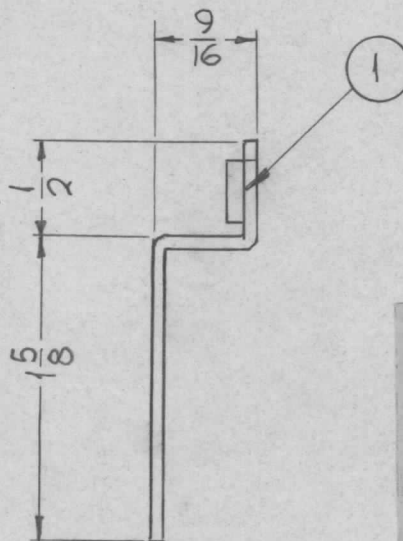
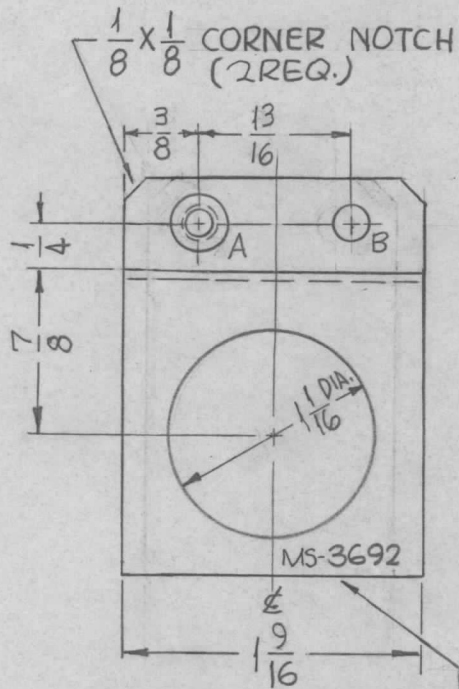
DECIMALS
 .X ± .05
 .XX ± .01
 .XXX ± .005

FRACTIONS
 ± 1/64
 ANGLES
 ± 0° 30'

TOLERANCES

CODE
 A

REQ. PER UNIT	USED ON			MS-3692 0
	MODEL	ASS'Y. NO.	DATE	
6	GPT-200K	AX-395	2-20-64	



HOLE:
 A - .191 DIA. (1 REQ.)
 B - 9/64 DIA. (1 REQ.)

METAL STAMP TMC PART NO. 1/8 HIGH GOTHIC.

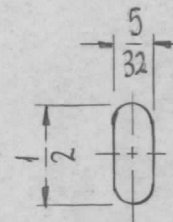
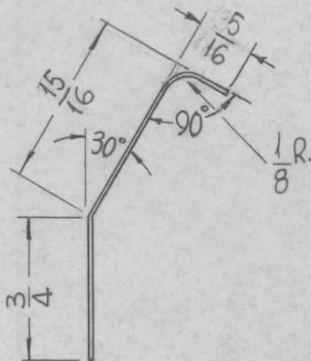
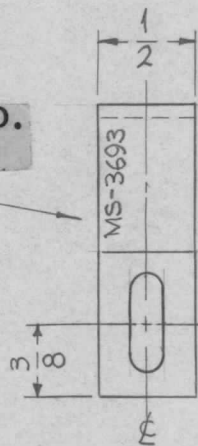
- UNLESS OTHERWISE SPECIFIED:
1. USE MATERIAL THICKNESS FOR MAXIMUM RADIUS ON ALL BENDS.
 2. ALL ANGULAR BENDS 90°.
 3. REMOVE ALL BURRS AND SHARP EDGES.
 4. MOUNT INSERTS AFTER FINISHING.
 5. 1/16 RADIUS ON ALL CORNERS.

1	1	NT-129-632-3	NUT ROUND, SWAGE TYPE			
REQ. ITEM	PART NO.		F. BUDETTI DESCRIPTION		SYMBOL	
	.051 THICK		THE TECHNICAL MATERIEL CORP. MAMARONECK, NEW YORK			
	STOCK SIZE		BRACKET, RESISTOR MTG. PA. DECK			
	ALUMINUM					
MATERIAL						
5052-H32		SRG		aa	RDC	
TYPE & TEMPER		HEAT TREAT. SPEC.		DRAWN		
S404 YELLOW IRIDITE		PBB		CHECKED		
FINISH & SPEC. NO.		ELEC. DES. APP.		MECH. DES. APP.		
				MS-3692 0		

0	ORIGINAL RELEASE	5.16.64				
X1	B HOLE WAS .171	2-24-64				
SYM	DESCRIPTION	DATE	CH. NO.	DRAFTS	CHECKER	ENG. APP.
UNLESS OTHERWISE SPECIFIED DIMENSIONS ARE IN INCHES AND INCLUDE CHEMICALLY APPLIED OR PLATED FINISHES		SCALE		1"=1"		
DECIMALS .X ± .05 .XX ± .01 .XXX ± .005		FRACTIONS ± 1/64 ANGLES ± 0° 30'		TOLERANCES		

REQ. PER UNIT	USED ON			MS-3693 0
	MODEL	ASS'Y. NO.	DATE	
4	GPT-200K	AX-395	3-2-64	

METAL STAMP TMC PART NO.
1/8 HIGH GOTHIC.

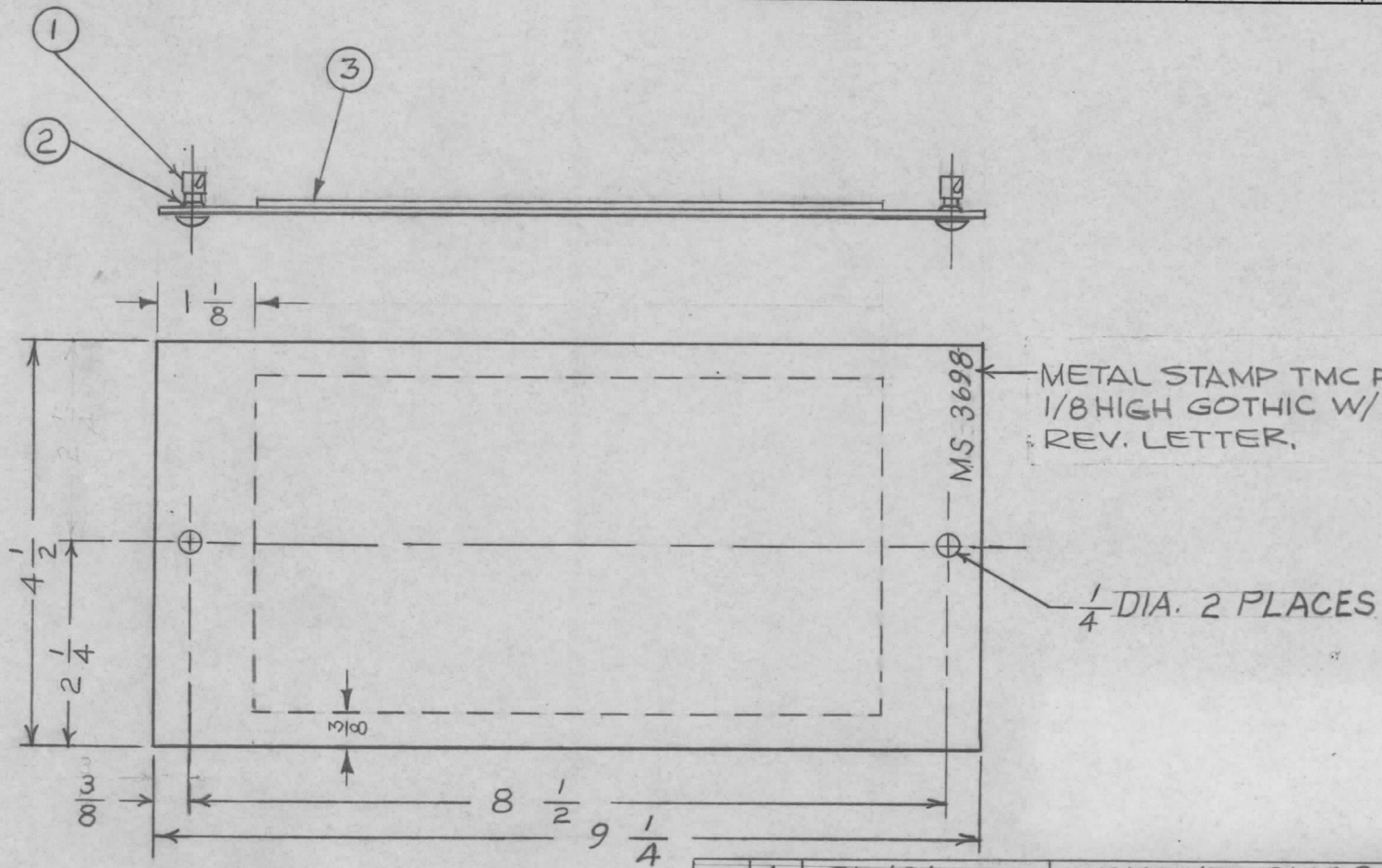


SLOT-DETAIL

NOTE
HEAT TREAT AFTER BENDING

REQ. ITEM	PART NO.	F. BUDETTI	DESCRIPTION	SYMBOL						
	.030 THICK		THE TECHNICAL MATERIEL CORP. MAMARONECK, NEW YORK							
	STOCK SIZE									
0 ORIGINAL RELEASE	5-16-64	JTB	CONTACT, GROUND							
XI 5/16 WAS 3/16, 5/32 WAS 3/16 MATL WAS BER. COPPER, S245 ADDED	5-13-64	SRG								
SYM	DESCRIPTION	DATE	CH. NO.	DRAFTS	CHECKER	ENG. APP.	MATERIAL			
UNLESS OTHERWISE SPECIFIED DIMENSIONS ARE IN INCHES AND INCLUDE CHEMICALLY APPLIED OR PLATED FINISHES		SCALE		1"=1"		SEE NOTE	SRG	aa	Bce	
DECIMALS .X ± .05 .XX ± .01 .XXX ± .005	FRACTIONS ± 1/64 ANGLES ± 0° 30'	TOLERANCES	CODE	TYPE & TEMPER	HEAT TREAT. SPEC.	DRAWN	CHECKED	FINAL APPROVAL		
				S245 SILVER PLATE		SRG	aa	MS-3693 0		
				FINISH & SPEC. NO.		ELEC. DES. APP.	MECH. DES. APP.			

REQ. PER UNIT	USED ON			MS 3698	Ø
	MODEL	ASSY. NO.	DATE		
1	MFP-1		2/6/64		



REMOVE ALL BURRS AND SHARP EDGES

~	4	GL 101	CEMENT, PLIOBOND
1	3	IM 179-12	INSULATOR, FISH PAPER
2	2	FS 109-3	RING, STUD RETAINING
2	1	FS 110-1	STUD, SLOTTED HEAD

REQ. ITEM	PART NO.	T. AALTONEN	DESCRIPTION	SYMBOL
.063 THK.		THE TECHNICAL MATERIEL CORP.		
STOCK SIZE		MAMARONECK, NEW YORK		
ALUMINUM		COVER, BOTTOM		
MATERIAL				
5052-H32		A.M.	@	
TYPE & TEMPER		DRAWN	CHECKED	FINAL APPROVAL
HEAT TREAT. SPEC.				
5404 IRIDITE 14-2 AL-COAT				MS 3698 Ø
FINISH & SPEC. NO.		ELEC. DES. APP.	MECH. DES. APP.	

Ø	ORIG. RELEASE FOR PROD.	8-18-64	-	SRG		
X	ITEMS #3 & #4 ADDED	3.25.64		WB		
SYM	DESCRIPTION	DATE	CH. NO.	DRAFTS	CHECKER	ENG. APP.
UNLESS OTHERWISE SPECIFIED DIMENSIONS ARE IN INCHES AND INCLUDE CHEMICALLY APPLIED OR PLATED FINISHES		SCALE 1:2				
DECIMALS .X ± .05 .XX ± .01 .XXX ± .005	TOLERANCES	FRACTIONS ± 1/64 ANGLES ± 0° 30'	CODE A			

