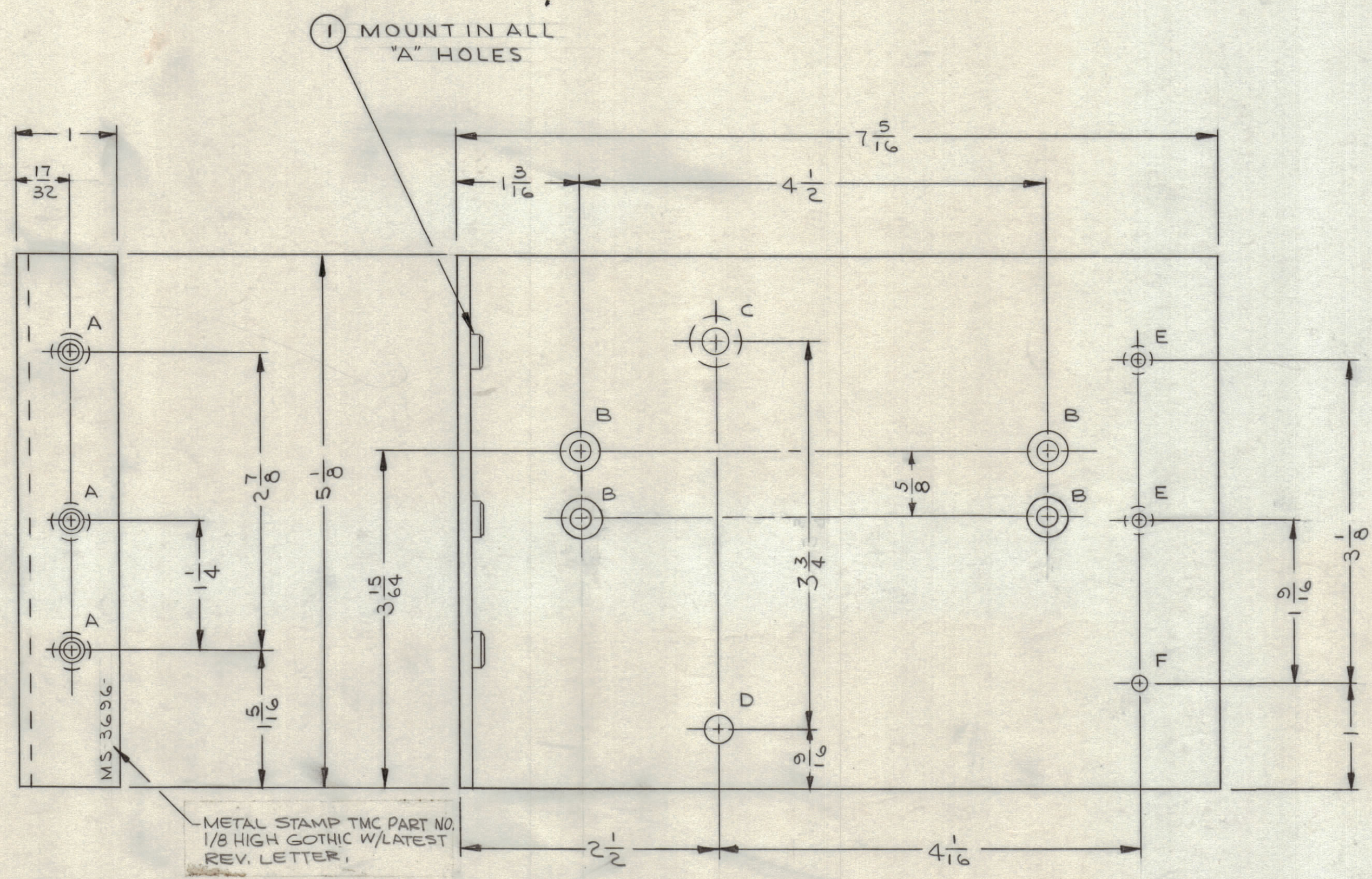


REVISIONS							
ZONE	SYM	DESCRIPTION	DATE	E.M.N. NO.	DRAFT	CHKD	APPD
E-4,5	X ₁	ADDED 2 "B" HOLES	3.16.64		hfb		
-	Ø	ORIGINAL RELEASE FOR PRODUCTION	8-18-64		SEG		
B7,6	A	"E"-HOLE WAS .144 DIA & C'SK 82° X .284 DIA. "F"-HOLE WAS 5/32 DIA	10.12.64	12582	hfb		



METAL STAMP TMC PART NO. 1/8 HIGH GOTHIC W/LATEST REV. LETTER.

HOLE LEGEND		
HOLE	DESCRIPTION	REQ'D
A	.250-.253 DIA	3
B	.196 DIA. & C'SINK 82° X .330 DIA.	4
C	.254 DIA & C'SINK 82° X .470 DIA.	1
D	9/32 DIA	1
E	.169 DIA & C'SINK 82° X .337 DIA.	2
F	3/16 DIA	1

- UNLESS OTHERWISE SPECIFIED:
- USE MATERIAL THICKNESS FOR MAXIMUM RADIUS ON ALL BENDS.
 - ALL ANGULAR BENDS 90°.
 - REMOVE ALL BURRS AND SHARP EDGES.
 - MOUNT INSERTS AFTER FINISHING.

FINISH NOTES:
1. S404 - IRIDITE 14-2 AL-COAT.

NOTES

1	MFP-1	
Q'TY./UNIT	MODEL USED ON	ASS'Y. NO.
SCALE 1:1	CODE A	
THE CONTENTS OF THIS DRAWING ARE THE EXCLUSIVE PROPERTY OF THE TECHNICAL MATERIEL CORP. ITS UNAUTHORIZED USE OR REPRODUCTION IN WHOLE OR IN PART IS STRICTLY FORBIDDEN.		

3	1	NT-129-1032-6	NUT, ROUND, SWAGE TYPE	
REQ'D	ITEM	PART NUMBER	DESCRIPTION	SYMBOL
T. AALTONEN LIST OF MATERIAL				
MATERIAL		THE TECHNICAL MATERIEL CORP.		
1/8 THK ALUMINUM		MAMARONECK, NEW YORK		
5052-H32		TITLE		
FINISH		SEE NOTE		
SEE NOTE		PLATE, SIDE - LEFT		
DRAWN		DATE	FINAL APPROVAL	
J. LESHINSKI		2/4/64	Ror	
CHECKED		DATE		
@		8-17-64		
ELECT. DES.		DATE		
726		8-17-64	MS-3696-A	
MECH. DES.		DATE		
3/17-64		8-17-64	SHEET	
DECIMALS		FRACTIONS		REV. LTR.
.XX ± .01		± 1/64		
.XXX ± .005		ANGLES ± 0° 30'		

MS-3696A