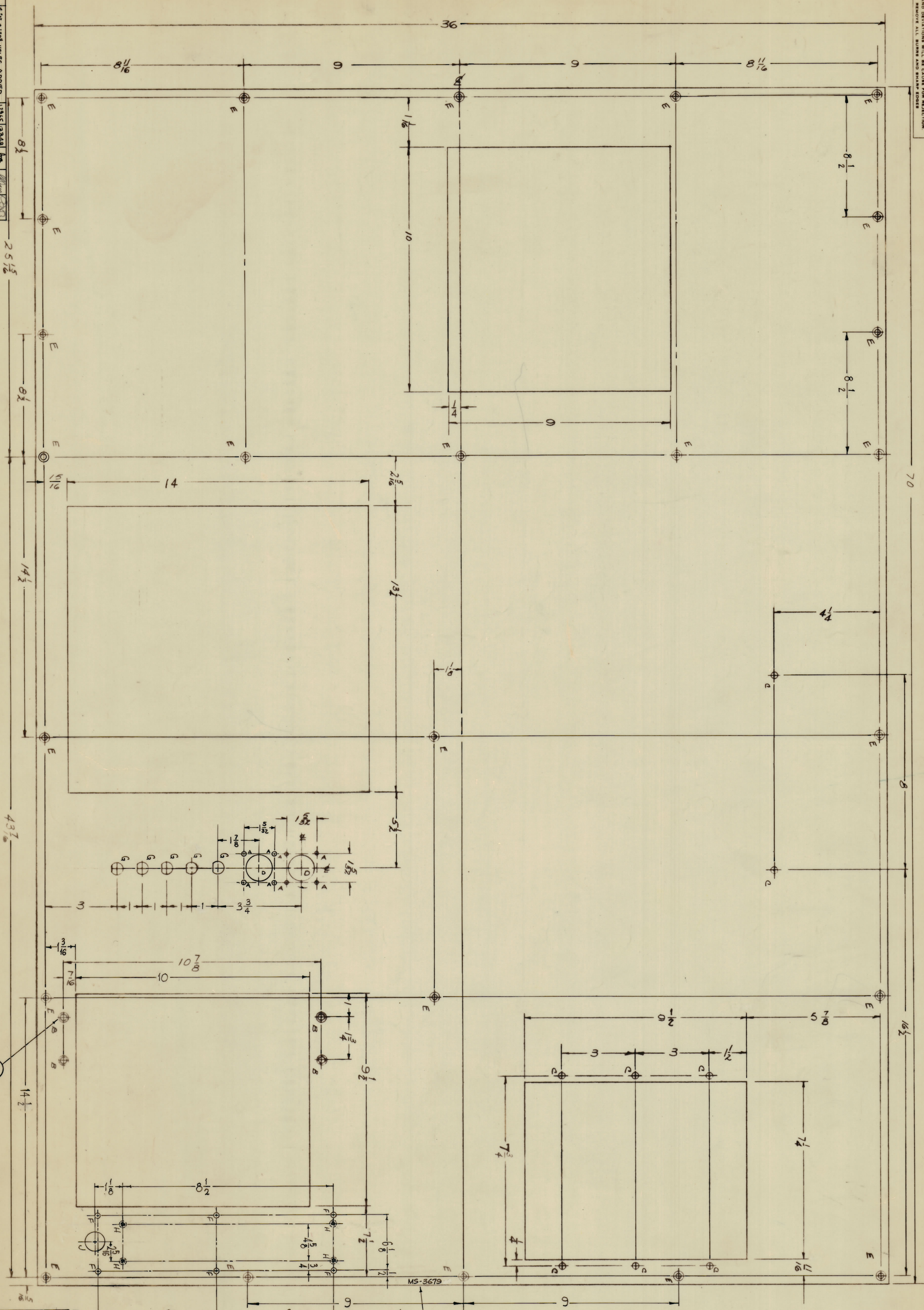
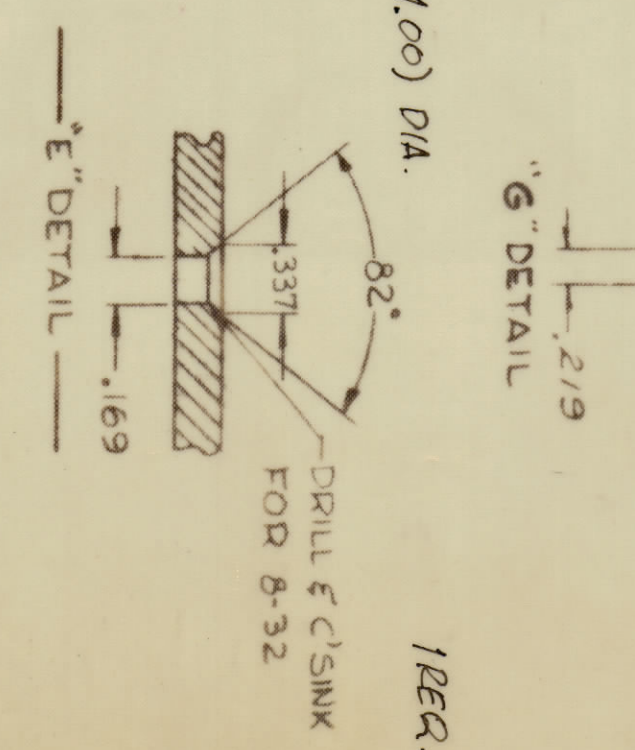


IF IT IS FOUND DESIRABLE TO CHANGE ANY TOLERANCES OR DIMENSIONS FROM THE DRAWING NOTES, THE PURCHASER ACCEPTS THE RESPONSIBILITY FOR THE MAXIMUM ALLOWABLE TOLERANCES HAVE BEEN DETERMINED AND DEVIATIONS WILL BE CAUSED FOR REJECTION REMOVE ALL BURRS AND SHARP EDGES



HOLE LEGEND

- A $\frac{1}{8}$ (125) DIA. 8 REQ.
- B: .221 - .224 DIA. RAD NT-129-892-4 4 REQ.
- C: $\frac{13}{64}$ (.203) DIA. 8 REQ.
- D: $\frac{1}{8}$ (.125) DIA. 2 REQ.
- E SEE DETAIL 25 REQ.
- F: .15/.14 DIA. 6 REQ.
- G SEE DETAIL 5 REQ.
- H: .250 MIN., .253 MAX. DIAS. FOR MTS. 4 REQ.
- WT-129-1058-4.



MARK TMC PART NO. WITH LATEST REVISION LETTER

REF. LD-1361

4	2	NT-129-1032-4	NUT, ROUND, SWAGE TYPE
4	1	NT-129-892-4	NUT, ROUND, SWAGE TYPE
F. BUDETTI			
THE TECHNICAL MATERIAL CORP.			
MARSHORCK, NEW YORK			

ALL DIMENSIONS ARE IN INCHES UNLESS OTHERWISE SPECIFIED	DATE	BY
ORIGINAL PUNCH COMPANY, STOCK TOLERANCES ARE NOT INCLUDED	5/6/64	O. A.M.
EXPERIMENTAL RELEASE	5/6/64	O. A.M.
ORIGINAL RELEASE	5/6/64	O. A.M.
4" X 8" X .061 THK ALUMINUM		

1	GR-100K J1 (A113)	PROJECT NO.	4887	DATE	1-27-64
S404 YELLOW IRIDIUM					
MS-3679 A					