

7

6

5

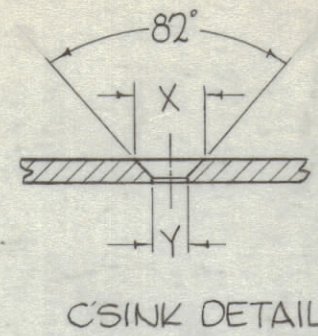
4

3

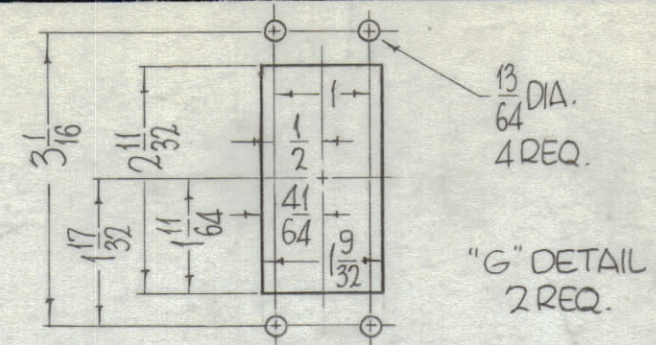
2

1

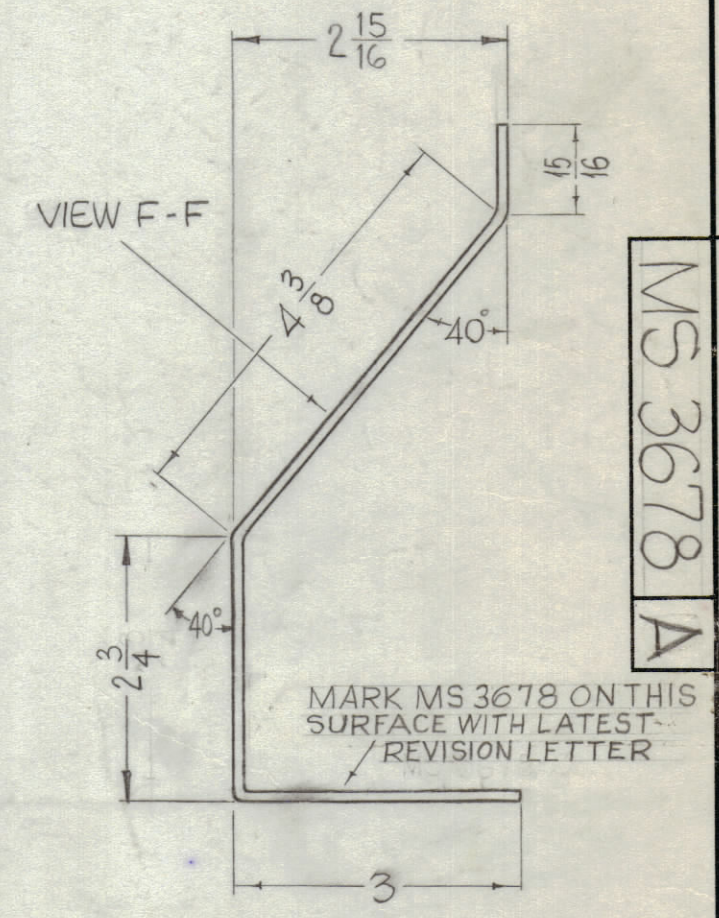
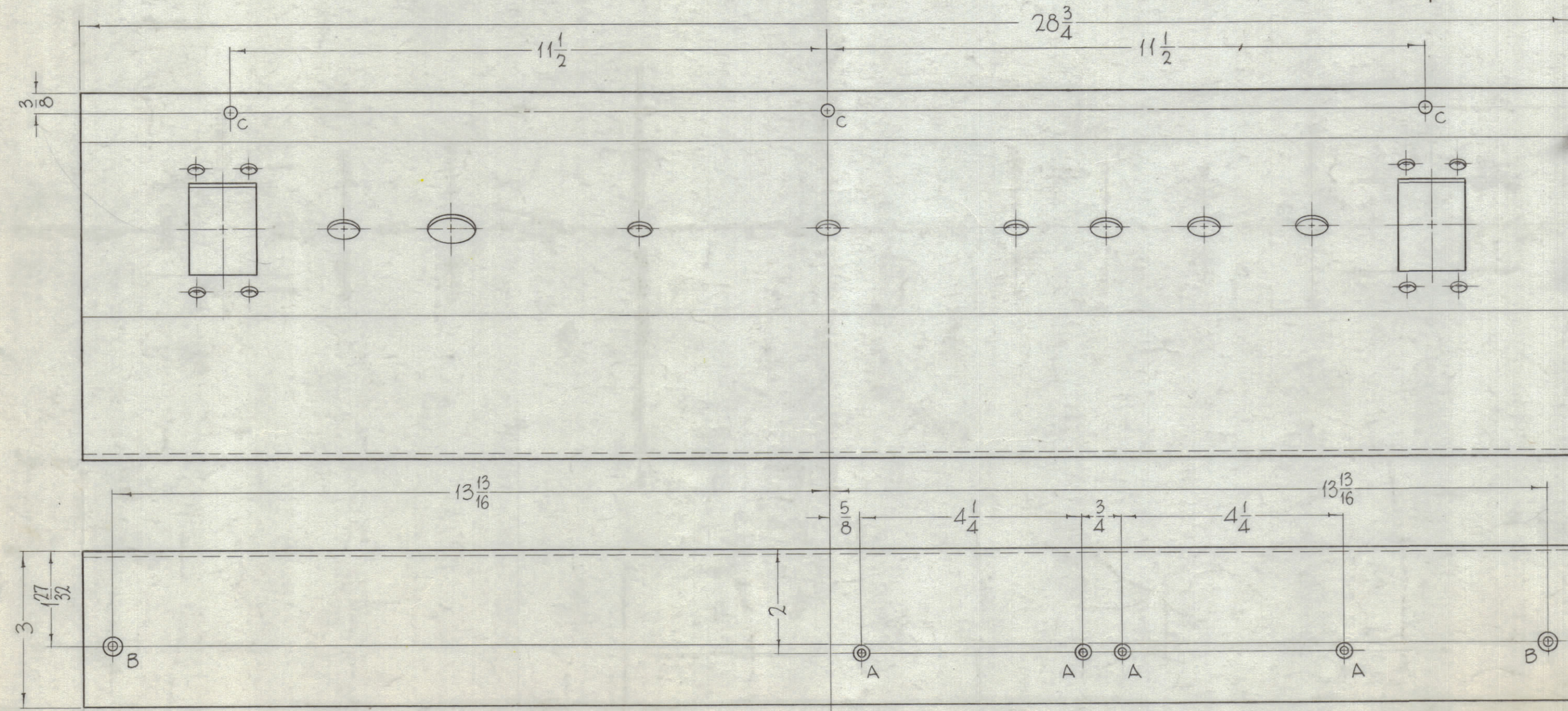
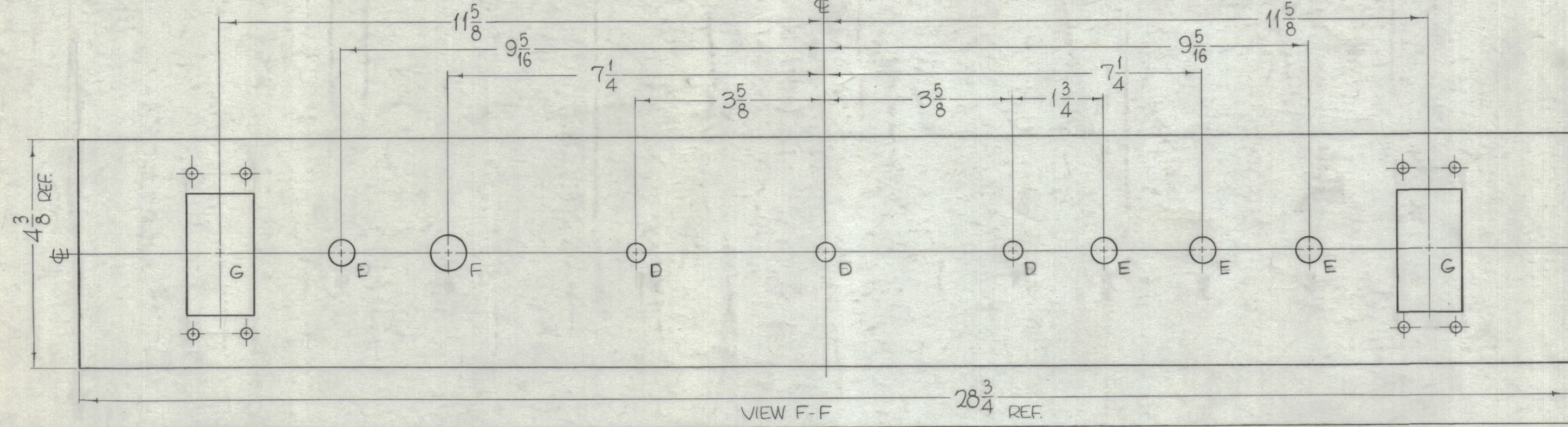
HOLES	REQ.
A - SEE C'SINK DETAIL	4
B - SEE C'SINK DETAIL	2
C - 13/64 DIA.	3
D - 3/8 DIA.	3
E - 1/2 DIA.	4
F - 11/16	1



HOLE	X	Y
A	.337	.169
B	.390	.196



REVISIONS					
ZONE	SYM	DESCRIPTION	DATE	E.M.N. NO.	APPD
	X	EXPERIMENTAL RELEASE	5/9/64		
	O	ORIGINAL RELEASE FOR PRODUCTION	5/6/64	0	A.M.
	A	CLERICAL CHANGES	1/24/64	-4	HLA



MS 3678 A

REF. TMC NO. LD 1379, LD 2041

**UNLESS OTHERWISE SPECIFIED:**

- USE MATERIAL THICKNESS FOR MAXIMUM RADIUS ON ALL BENDS.
- ALL ANGULAR BENDS 90°.
- REMOVE ALL BURRS AND SHARP EDGES.

**MACHINING:**

- MILL ALL EDGES.
- HOLES MUST BE DRILLED, UNLESS OTHERWISE SPECIFIED.
- LATERAL BOW OF PANEL MUST BE KEPT TO .031 TOLERANCE.
- PANEL MUST BE FREE OF ALL MACHINING MARKS, GOUGES AND SCRATCHES. IF NECESSARY, SAND FRONT OF PANEL WITH NO. 120 GRIT SANDPAPER.

**FINISH NOTES:**

- S404 - IRIDITE 14-2 AL-COAT.
- S114 - ZINC CHROMATE PRIMER) FRONT AND
- S115 - SMOOTH GRAY ENAMEL ) EDGES ONLY

**NOTES**

REQ'D.	ITEM	PART NUMBER	DESCRIPTION	SYMBOL
F. BUDETTI LIST OF MATERIAL				
MATERIAL			THE TECHNICAL MATERIEL CORP.	
1/8" THICK, ALUMINUM, 5052, H-32			MAMARONECK, NEW YORK	
FINISH			TITLE	
SEE NOTES			PANEL, FRONT	
UNLESS OTHERWISE SPECIFIED DIMENSIONS ARE IN INCHES AND INCLUDE CHEMICALLY APPLIED OR PLATED FINISHES		DRAWN	DATE	FINAL APPROVAL
		John C. Biele	1-23-64	RL
		CHECKED	DATE	DATE
		EB		5-6-64
		ELECT. DES.	DATE	
		EB		
		MECH. DES.	DATE	
		EB		
		MS 3678		A
		SHEET		REV. LTR.

THE CONTENTS OF THIS DRAWING ARE THE EXCLUSIVE PROPERTY OF THE TECHNICAL MATERIEL CORP. ITS UNAUTHORIZED USE OR REPRODUCTION IN WHOLE OR IN PART IS STRICTLY FORBIDDEN.

DECIMALS: X ± .05, XX ± .01, XXX ± .005  
FRACTIONS: ± 1/64, ANGLES: ± 0° 30'