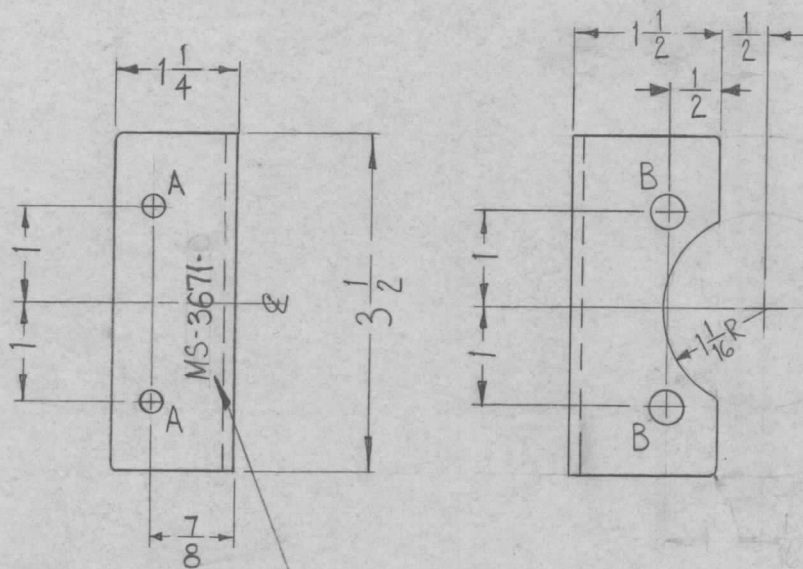


| HOLE | DESCRIPTION | REQ. |
|------|-------------|------|
| A | 7/32 DIA. | 2 |
| B | 11/32 DIA. | 2 |

| REQ. PER UNIT | USED ON | | | MS-3671 | 0 |
|---------------|------------------------|------------|----------|---------|---|
| | MODEL | ASS'Y. NO. | DATE | | |
| | GPT-40K()4 (AX510) | A3424 | 12-28-63 | | |



UNLESS OTHERWISE SPECIFIED:

1. USE MATERIAL THICKNESS FOR MAXIMUM RADIUS ON ALL BENDS.
2. ALL ANGULAR BENDS 90°.
3. REMOVE ALL SHARP EDGES.

METAL STAMP TMC PART NO. & LATEST REV.
1/8 HIGH GOTHIC.

| REQ. | ITEM | PART NO. | F. BUDETTI DESCRIPTION | | | SYMBOL |
|------|------|---------------------|--|-----------------|--------------------|------------------|
| | | 1/8 THK. | THE TECHNICAL MATERIEL CORP. MAMARONECK, NEW YORK | | | BRACKET, SUPPORT |
| | | STOCK SIZE | | | | |
| | | ALUMINUM | | | | |
| | | MATERIAL | | | | |
| | | 5052-H32 | W.A. FRANCO | <i>gcb</i> | <i>RAL</i> | |
| | | TYPE & TEMPER | HEAT TREAT. SPEC. | DRAWN | CHECKED | FINAL APPROVAL |
| | | S404 YELLOW IRIDITE | | | <i>arc 2/26/64</i> | MS-3671 0 |
| | | FINISH & SPEC. NO. | ELEC. DES. APP. | MECH. DES. APP. | | |