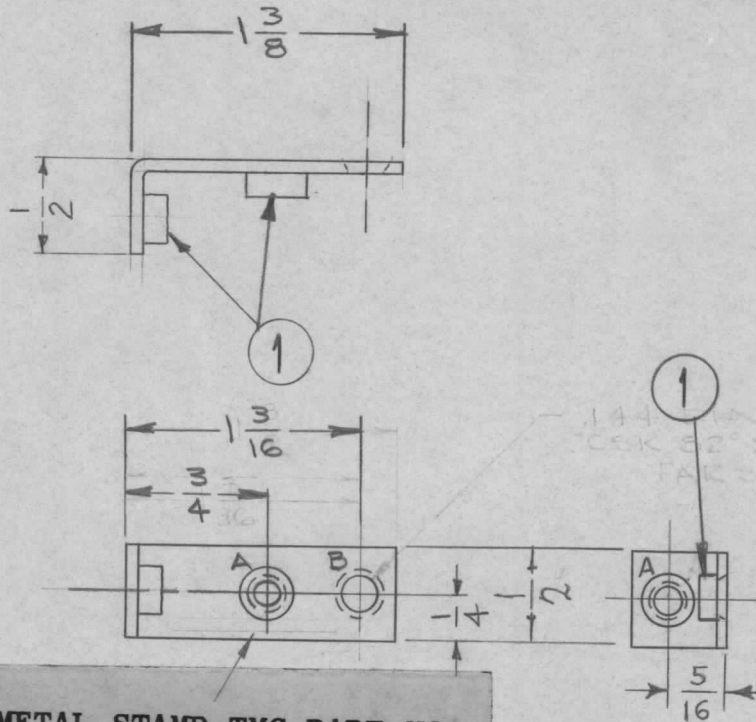


REQ. PER UNIT	USED ON			MS-3665	A
	MODEL	ASS'Y. NO.	DATE		
4	RAK-35A		1-25-64		



A- .191 - .194 DIA. - 2 REQ.

B- .144 DIA THRU, C'SINK 82° X .284 DIA - 1 REQ.

METAL STAMP TMC PART NO. 1/8 HIGH GOTHIC, WITH LATEST REVISION LETTER.

- UNLESS OTHERWISE SPECIFIED:
1. USE MATERIAL THICKNESS FOR MAXIMUM RADIUS ON ALL BENDS.
 2. ALL ANGULAR BENDS 90°.
 3. REMOVE ALL BURRS AND SHARP EDGES.
 4. MOUNT INSERTS AFTER FINISHING.

						2	1	NT-129-632-4	NUT, SWAGE	A
						REQ. ITEM	PART NO.		I. JOHNSON DESCRIPTION	SYMBOL
						.064 THK			THE TECHNICAL MATERIEL CORP.	
						STOCK SIZE			MAMARONECK, NEW YORK	
						ALUMINUM			BRACKET, MOUNTING	
						MATERIAL				
						5052-H32	---		Drawn @ 3-10-64	3/10/64
						TYPE & TEMPER	HEAT TREAT. SPEC.	DRAWN	CHECKED	FINAL APPROVAL
						3404 YEL IRIDITE		MS-3665		A
						FINISH & SPEC. NO.		ELEC. DES. APP.	MECH. DES. APP.	
UNLESS OTHERWISE SPECIFIED DIMENSIONS ARE IN INCHES AND INCLUDE CHEMICALLY APPLIED OR PLATED FINISHES		SCALE		1:1						
DECIMALS .X ± .05 .XX ± .01 .XXX ± .005		FRACTIONS ± 1/64 ANGLES ± 0° 30'		CODE		A				
TOLERANCES										