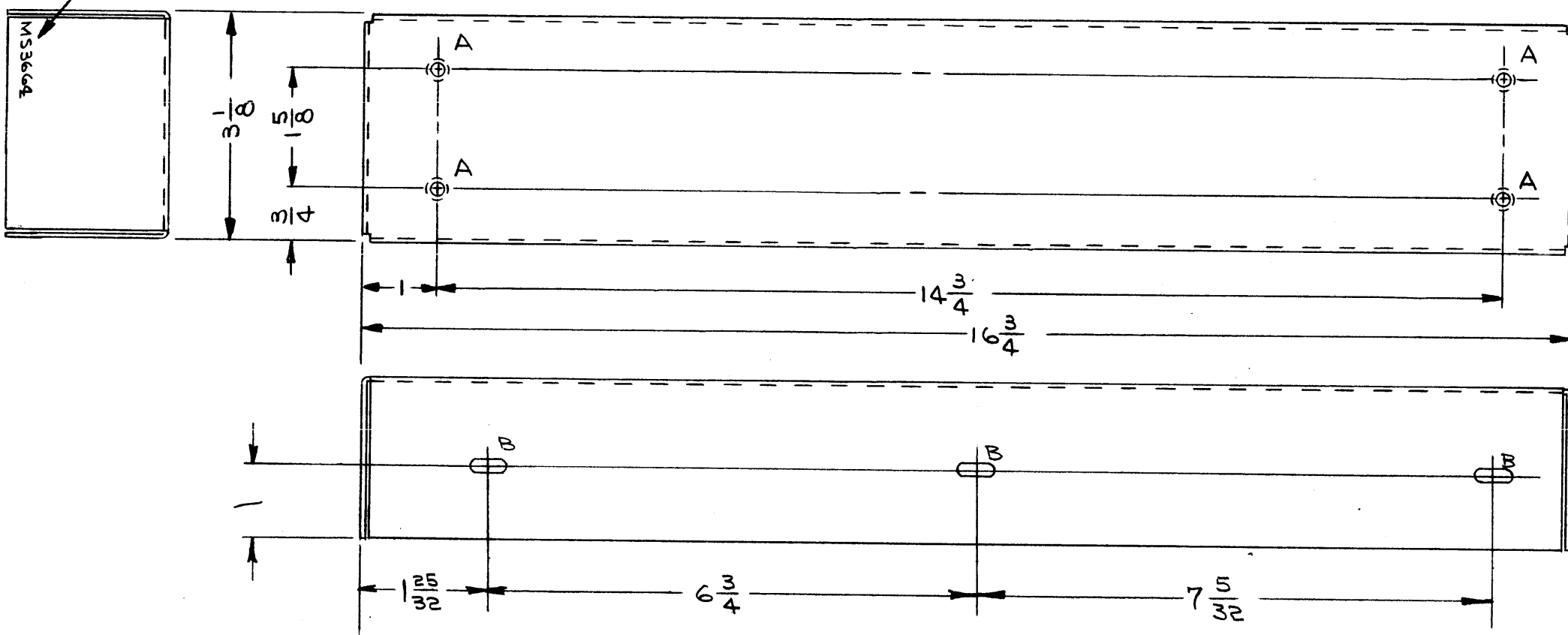


MS-3664 A

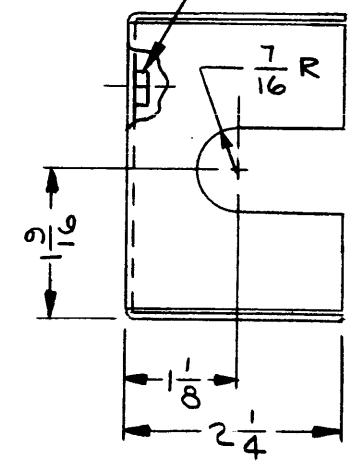
REVISIONS

SYM	DESCRIPTION	DATE	E.M.N. NO.	DRAFT	CHKD	APPD
A	(6) "B" HOLES DELETED, (3) RELOCATED; (1) "C" HOLE DELETED (1) SLOT ADDED TO SIDE VIEW (RIGHT)	7-16-64	11877		JCS	JCS

METAL STAMP TMC PART NO.
1/8 HIGH GOTHIC, WITH
LATEST REVISION LETTER



① MOUNT IN ALL "A" HOLES



HOLE LEGEND		
HOLE	DESCRIPTION	REQ'D
A	.191 - .194 DIA.	4
B	11/64 X 11/32 SLOT	6
C	—	—

(ALL DIMENSIONS ARE TYPICAL)
ON OPPOSITE SIDE

UNLESS OTHERWISE SPECIFIED:

1. USE MATERIAL THICKNESS FOR MAXIMUM RADIUS ON ALL BENDS.
2. ALL ANGULAR BENDS 90°.
3. REMOVE ALL BURRS AND SHARP EDGES.
4. MOUNT INSERTS AFTER FINISHING.

4	1	NT-129-632-4	NUT, ROUND, SWAGE TYPE	A
REQ'D.	ITEM	PART NUMBER	DESCRIPTION	SYMBOL

I. JOHNSON		LIST OF MATERIAL		
MATERIAL		THE TECHNICAL MATERIEL CORP. MAMARONECK, NEW YORK		
.062 THK ALUMINUM 5052-H32		TITLE		
FINISH		CHASSIS, ELECTRICAL		
YELLOW IRIDITE PER TMC SPEC. S-404		DRAWN		
UNLESS OTHERWISE SPECIFIED DIMENSIONS ARE IN INCHES AND INCLUDE CHEMICALLY APPLIED OR PLATED FINISHES		J. LESHINSKI	DATE	FINAL APPROVAL
			1/8/64	
		CHECKED	DATE	DATE
		@	3-10-64	3/10/64
		ELECT. DR.	DATE	
			3-10-64	
		MECH. DR.	DATE	
			3-10-64	

1	RAK-35A	
Q'TY./UNIT	MODEL USED ON	ASS'Y. NO.
SCALE	CODE	
1:2	A	
THE CONTENTS OF THIS DRAWING ARE THE EXCLUSIVE PROPERTY OF THE TECHNICAL MATERIEL CORP. ITS UNAUTHORIZED USE OR REPRODUCTION IN WHOLE OR IN PART IS STRICTLY FORBIDDEN.		

DECIMALS	FRACTIONS
.X ± .05	± 1/64
.XX ± .01	ANGLES
.XXX ± .005	± 0° 30'

DATE	3/10/64
DATE	3-10-64
DATE	3-10-64
DATE	3-10-64
MS-3664	A
SHEET	REV. LTR.

NOTES