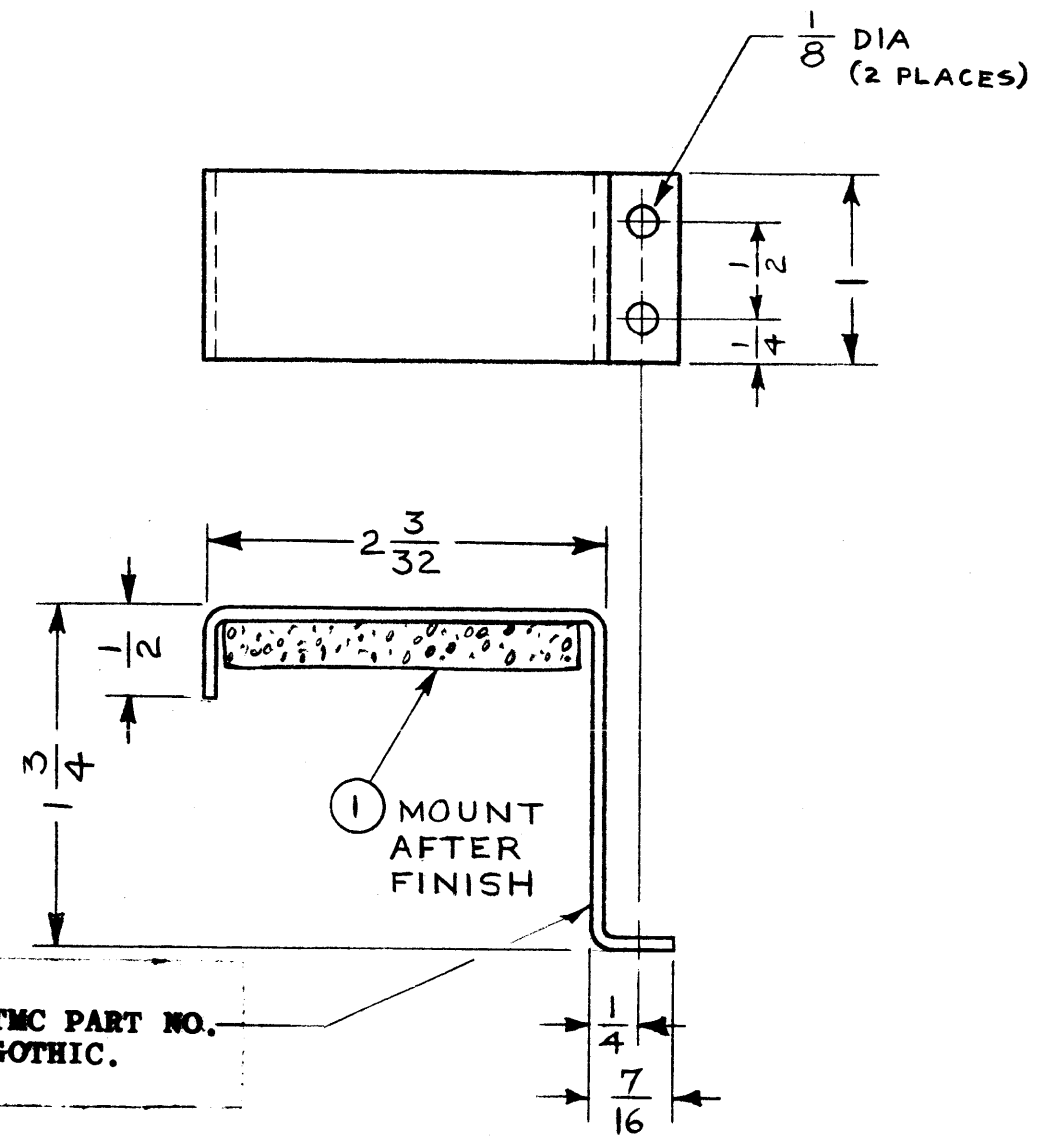


MS-3638 0

REVISIONS						
SYM	DESCRIPTION	DATE	E.M.N. NO.	DRAFT	CHKD	APPD
0	ORIGINAL RELEASE FOR PRODUCTION	4/13/64	0	A.M.	@	



METAL STAMP TMC PART NO.
1/8 HIGH GOTHIC.

- UNLESS OTHERWISE SPECIFIED:**
1. USE MATERIAL THICKNESS FOR MAXIMUM RADIUS ON ALL BENDS.
 2. ALL ANGULAR BENDS 90°.
 3. REMOVE ALL BURRS AND SHARP EDGES.

NOTES

1	MCG-1	
QTY./UNIT	MODEL USED ON	ASSY. NO.
SCALE 1:1	CODE A	

THE CONTENTS OF THIS DRAWING ARE THE EXCLUSIVE PROPERTY OF THE TECHNICAL MATERIEL CORP. ITS UNAUTHORIZED USE OR REPRODUCTION IN WHOLE OR IN PART IS STRICTLY FORBIDDEN.

1	1	TA-111-2-8-1.87-A	TAPÉ, URETHANE	
REQ'D.	ITEM	PART NUMBER	DESCRIPTION	SYMBOL
AALTONEN LIST OF MATERIAL				
MATERIAL .084 THICK 5052-H32 ALUMINUM			THE TECHNICAL MATERIEL CORP. MAMARONECK, NEW YORK	
FINISH YEL IRIDITE 14-2 ALCOAT			TITLE BRACKET, CRYSTAL	
UNLESS OTHERWISE SPECIFIED DIMENSIONS ARE IN INCHES AND INCLUDE CHEMICALLY APPLIED OR PLATED FINISHES			DRAWN <i>H. Peterson</i> DATE 12-4-63	FINAL APPROVAL <i>RJ</i> DATE 4/22/64
DECIMALS .X ± .05 .XX ± .01 .XXX ± .005			TOLERANCES	FRACTIONS ± 1/64 ANGLES ± 0° 30'
ELECT. DES. <i>A. R. G.</i> DATE 1/29/64			MS-3638 0	
MECH. DES. <i>M. Selinger</i> DATE 1-30-64			SHEET	
REV. LTR.				