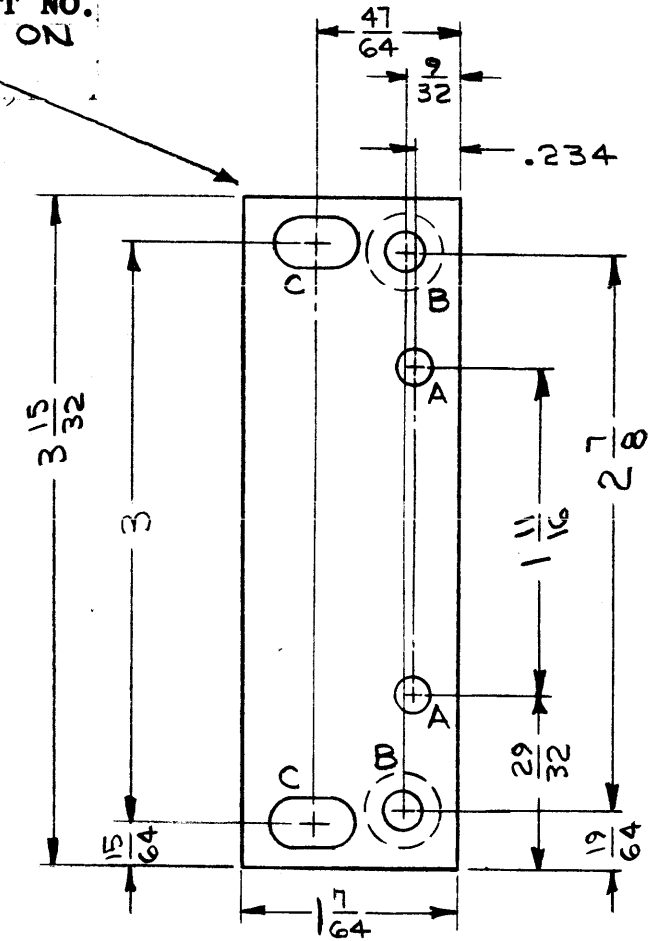


TMC PART NUMBER	DESCRIPTION	"A" DIA	"B" COUNTERSINK	"C" SLOT	MS-3623-0
MS-3623-1	LEFT END	$\frac{11}{64}$	.196 DIA HOLE, C'SINK 82° TO .390 DIA.	$\frac{1}{4} \times \frac{29}{64}$	
MS-3623-2	RIGHT END	$\frac{11}{64}$	.196 DIA. HOLE, C'SINK 82° TO .390 DIA.	$\frac{1}{4} \times \frac{29}{64}$	

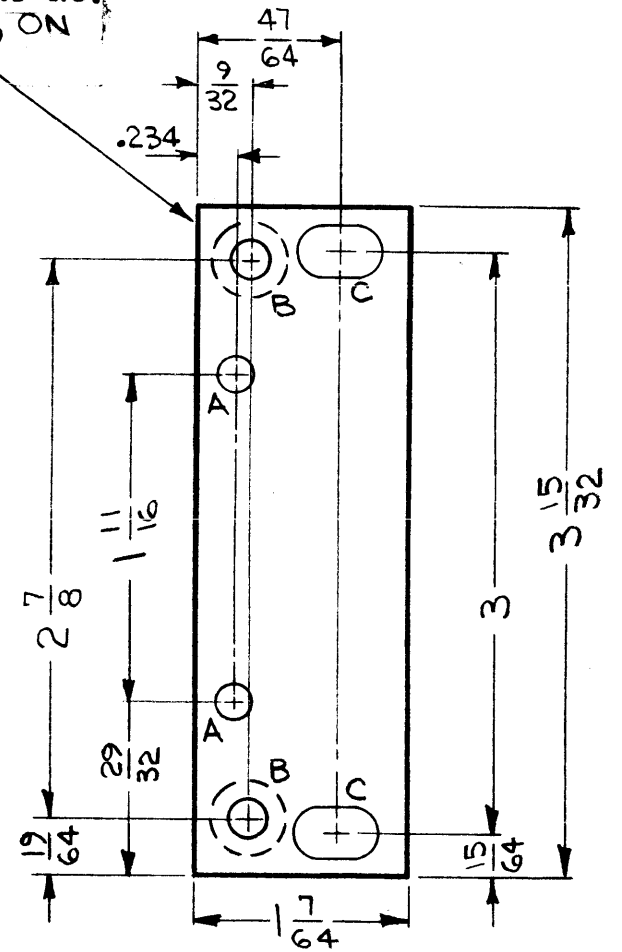
REVISIONS						
SYM	DESCRIPTION	DATE	E.M.N. NO.	DRAFT	CHKD	APPD
X1	COMPLETELY REDRAWN (CLARIFICATION)	12-11-63	1	G.S.		
0	ORIGINAL RELEASE FOR PRODUCTION	4-24-64		AM		

METAL STAMP TMC PART NO. 1/8 HIGH GOTHIC, ON REAR (MS-3623-1)



MS-3623-1  
FRONT OF PANEL  
SHOWN

METAL STAMP TMC PART NO. 1/8 HIGH GOTHIC, ON REAR (MS-3623-2)



MS-3623-2  
FRONT OF PANEL  
SHOWN

**MACHINING:**

1. MILL ALL EDGES.
2. HOLES MUST BE DRILLED, UNLESS OTHERWISE SPECIFIED.
3. LATERAL BOW OF PANEL MUST BE KEPT TO .031 TOLERANCE.
4. PANEL MUST BE FREE OF ALL MACHINING MARKS, GOUGES AND SCRATCHES. IF NECESSARY, SAND FRONT OF PANEL WITH NO. 120 GRIT SANDPAPER.

**FINISH NOTES:**

1. S404 - IRIDITE 14-2 AL-COAT.
2. S114 - ZINC CHROMATE PRIMER) FRONT AND
3. S115 - SMOOTH GRAY ENAMEL ) EDGES ONLY

**NOTES**

1	MAF-1	
Q'TY./UNIT	MODEL USED ON	ASS'Y. NO.
SCALE 1:1	CODE A	

THE CONTENTS OF THIS DRAWING ARE THE EXCLUSIVE PROPERTY OF THE TECHNICAL MATERIEL CORP. ITS UNAUTHORIZED USE OR REPRODUCTION IN WHOLE OR IN PART IS STRICTLY FORBIDDEN.

REQ'D.	ITEM	PART NUMBER	DESCRIPTION	SYMBOL
<b>AALTONEN LIST OF MATERIAL</b>				
MATERIAL			THE TECHNICAL MATERIEL CORP. MAMARONECK, NEW YORK	
3/16, ALUMINUM 2024-T4				
FINISH			TITLE	
SEE NOTES			END PANEL, FRONT	
UNLESS OTHERWISE SPECIFIED DIMENSIONS ARE IN INCHES AND INCLUDE CHEMICALLY APPLIED OR PLATED FINISHES			DRAWN G. Smeen	DATE 12-11-63
			CHECKED @	DATE 4-23-64
			ELECT. DES. JLW	DATE 4/23/64
			MECH. DES. M.F.	DATE 4-23-64
			FINAL APPROVAL RDL	
			DATE 4/29/64	
			MS-3623	
			0	
			SHEET	
			REV. LTR.	