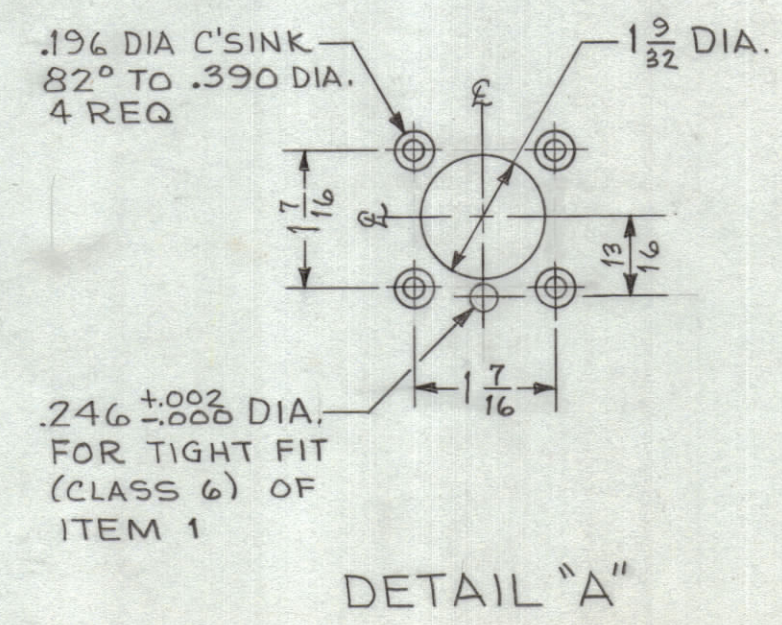


LEGEND

HOLE	DESCRIPTION	REQ
A	SEE DETAIL	4
B	5/8 DIA	4
C	.144 DIA. C'SINK 82° TO .284 DIA.	12
D	13/64 DIA.	1
E	.070 DIA.	3
F	.144 DIA.	8
G	DRILL & TAP FOR 3-48 AND C'SINK 82° TO .204 DIA.	8



MACHINING:

1. MILL ALL EDGES.
2. HOLES MUST BE DRILLED, UNLESS OTHERWISE SPECIFIED.
3. LATERAL BOW OF PANEL MUST BE KEPT TO .031 TOLERANCE.
4. PANEL MUST BE FREE OF ALL MACHINING MARKS, GOUGES AND SCRATCHES. IF NECESSARY, SAND FRONT OF PANEL WITH NO. 120 GRIT SANDPAPER.

FINISH NOTES:

1. S404 - IRIDITE 14-2 AL-COAT.
2. S114 - ZINC CHROMATE PRIMER) FRONT AND
3. S115 - SMOOTH GRAY ENAMEL) EDGES ONLY

NOTES:

1. MOUNT ITEM 1 AS SHOWN AFTER FINISHING. (4 PLACES)

NOTES

4	1	BB-115	BEARING, OILITE	
REQ'D.	ITEM	PART NUMBER	DESCRIPTION	SYMBOL
MARTINENGO LIST OF MATERIAL				
MATERIAL		THE TECHNICAL MATERIEL CORP.		
ALUMINUM 3/16		MAMARONECK, NEW YORK		
2024 - T3		TITLE		
SEE NOTES		PANEL, FRONT		
FINISH		DRAWN		
		M. TANTILLO		
		DATE 11-8-63		
		CHECKED		
		Hoe		
		DATE 11-22-63		
		ELECT. DES.		
		DATE		
		MECH. DES.		
		DATE 11-22-63		
		SHEET		
		REV. LTR.		

1	QDP-9E2S4B	
Q'TY./UNIT	MODEL USED ON	ASS'Y. NO.
SCALE 1:2	CODE A	
THE CONTENTS OF THIS DRAWING ARE THE EXCLUSIVE PROPERTY OF THE TECHNICAL MATERIEL CORP. ITS UNAUTHORIZED USE OR REPRODUCTION IN WHOLE OR IN PART IS STRICTLY FORBIDDEN.		

MS-3615