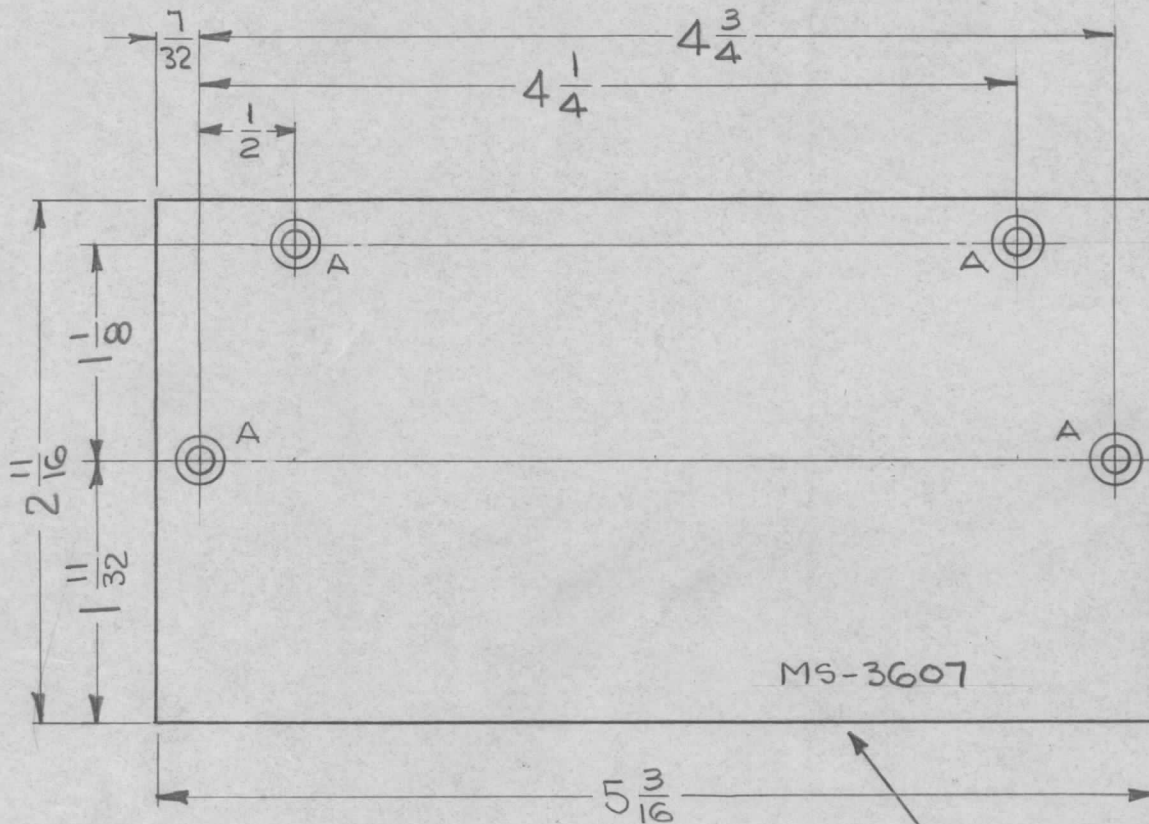


REQ. PER UNIT	USED ON			MS-3607 Φ
	MODEL	ASS'Y. NO.	DATE	
10	LFS-1		8-10-63	



LEGEND		
HOLE	DESCRIPTION	REQ
A	.120 DIA. HOLE, C'SINK 82° TO .230 DIA.	4

UNLESS OTHERWISE SPECIFIED:

1. USE MATERIAL THICKNESS FOR MAXIMUM RADIUS ON ALL BENDS
2. ALL ANGULAR BENDS 90 DEGREES
3. REMOVE ALL BURRS AND SHARP EDGES
4. MOUNT INSERTS AFTER FINISHING

METAL STAMP TMC PART NO.
1/8 HIGH GOTHIC, WITH
LATEST REVISION LETTER

SYM	DESCRIPTION	DATE	CH. NO.	DRAFTS	CHECKER	ENG. APP.	REQ. ITEM	PART NO.	M. GELLMAN DESCRIPTION	SYMBOL		
								.031	THE TECHNICAL MATERIEL CORP. MAMARONECK, NEW YORK			
								ALUMINUM		COVER, SIDE		
										(SPECTRUM FILTER)		
	ORIGINAL RELEASE FOR PRODUCTION	7-27-64	Φ					5052-H32	G. Jensen	@	RAL	
	UNLESS OTHERWISE SPECIFIED DIMENSIONS ARE IN INCHES AND INCLUDE CHEMICALLY APPLIED OR PLATED FINISHES	SCALE	1:1									
	DECIMALS .X \pm .05 .XX \pm .01 .XXX \pm .005	FRACTIONS \pm 1/64 ANGLES \pm 0° 30'	CODE	A					S404 - YELLOW IRIDITE			
	TOLERANCES							FINISH & SPEC. NO.	ELEC. DES. APP.	MECH. DES. APP.	MS-3607 Φ	