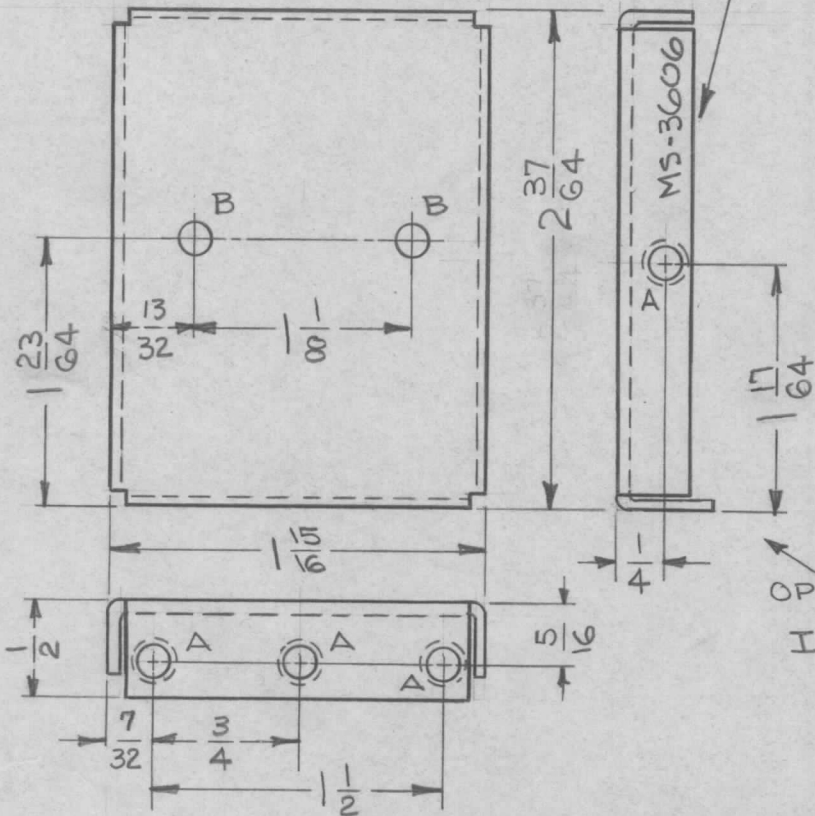


METAL STAMP TMC PART NO.  
1/8 HIGH GOTHIC, WITH  
LATEST REVISION LETTER.

HOLE	DESCRIPTION	REQ
A	.161-.164 DIA	7
B	5/32 DIA.	2



OPPOSITE SIDE  
IDENTICAL

UNLESS OTHERWISE SPECIFIED:

1. USE MATERIAL THICKNESS FOR MAXIMUM RADIUS ON ALL BENDS.
2. ALL ANGULAR BENDS 90°.
3. REMOVE ALL BURRS AND SHARP EDGES.
4. MOUNT INSERTS AFTER FINISHING.

7	1	NT-129-0440-3	NUT, ROUND, SWAGE TYPE	A
REQ. ITEM		PART NO.	DESCRIPTION	SYMBOL
		.040	THE TECHNICAL MATERIEL CORP. MAMARONECK, NEW YORK	
		ALUMINUM	PLATE, REAR (SPECTRUM FILTER)	
		5052-H32	—	G. Sencar
		3404-YEL. IRIDITE	—	MS-3606
		FINISH & SPEC. NO.	ELEC. DES. APP.	MECH. DES. APP.

SYM	DESCRIPTION	DATE	CH. NO.	DRAFTS	CHECKER	ENG. APP.
Ø	ORIGINAL RELEASE FOR PRODUCTION	1-27-64	Ø			
XI	SLOT ADDED TO TOP VIEW	2/24/64	1			
UNLESS OTHERWISE SPECIFIED DIMENSIONS ARE IN INCHES AND INCLUDE CHEMICALLY APPLIED OR PLATED FINISHES		SCALE 1:1				
DECIMALS .X ± .05 .XX ± .01 .XXX ± .005	TOLERANCES	FRACTIONS ± 1/64 ANGLES ± 0° 30'	CODE A			

REQ. PER UNIT	USED ON		
	MODEL	ASS'Y. NO.	DATE
5	LFS-1		8-10-63

MS-3606 Ø