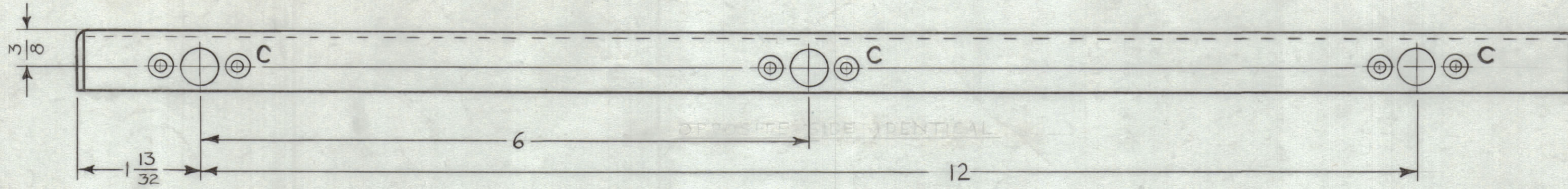
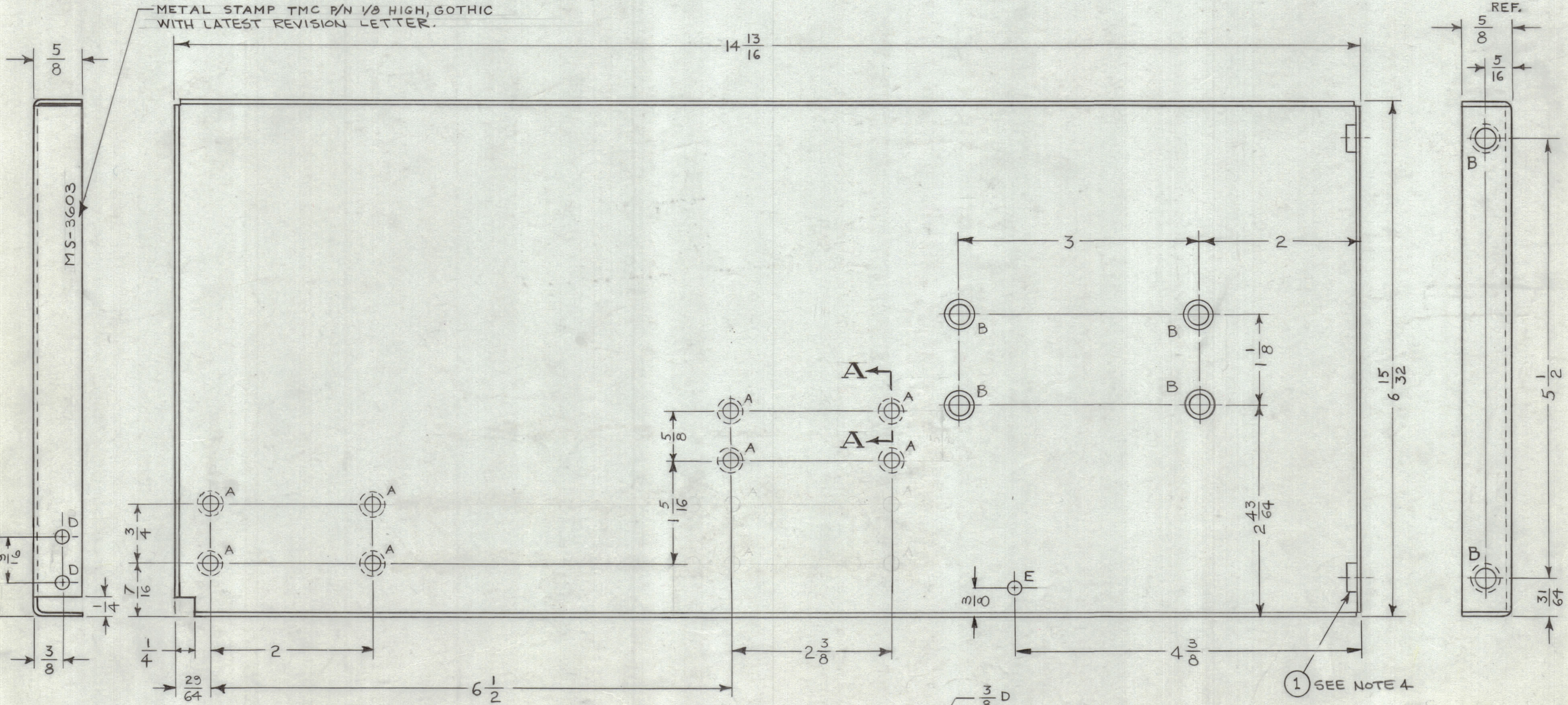


REVISIONS						
ZONE	SYM	DESCRIPTION	DATE	E.M.N. NO.	DRAFT	CHKD
C7	X1	1" DIM. WAS 13/16; ADDED 3/16 DIM. 3" D" HOLE QTY WAS (1); ADDED (1) "E" HOLE.	4/6/64	1	JL	
1	2	ORIGINAL RELEASE FOR PRODUCTION	12/64	2		

OPPOSITE SIDE IDENTICAL



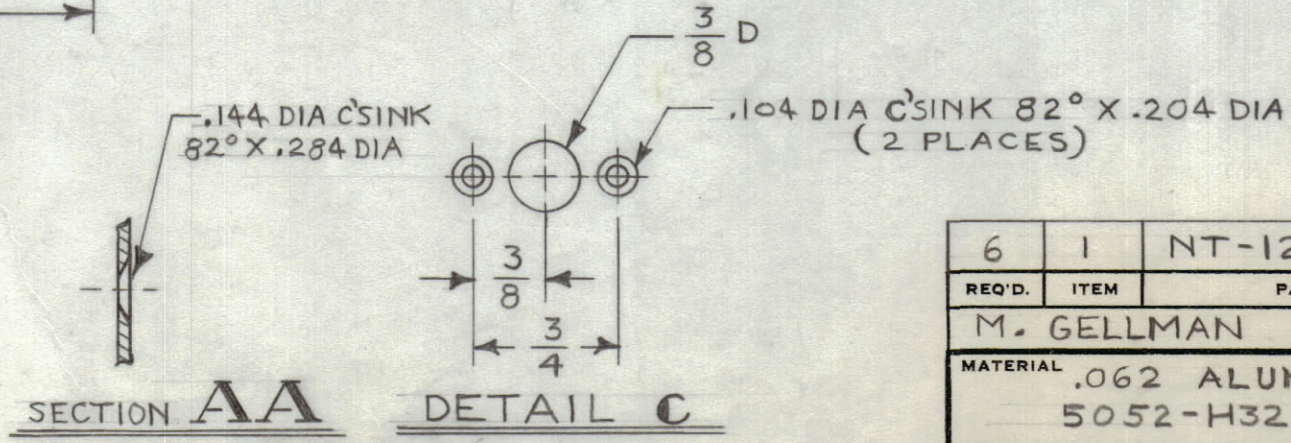
METAL STAMP TMC P/N 1/8 HIGH, GOTHIC WITH LATEST REVISION LETTER.



1 SEE NOTE 4

LEGEND		
HOLE	DESCRIPTION	REQD
A	SEE SECTION A-A	8
B	.250-.253 DIA	6
C	SEE DETAIL	6
D	3/16 DIA	2
E	1/16 DIA.	1

- UNLESS OTHERWISE SPECIFIED:
1. USE MATERIAL THICKNESS FOR MAXIMUM RADIUS ON ALL BENDS.
 2. ALL ANGULAR BENDS 90°.
 3. REMOVE ALL BURRS AND SHARP EDGES.
 4. MOUNT INSERTS AFTER FINISHING.



SECTION AA DETAIL C

REQ'D	ITEM	PART NUMBER	DESCRIPTION	SYMBOL
6	1	NT-129-1032-4	NUT, ROUND, SWAGE TYPE	B

M. GELLMAN LIST OF MATERIAL

MATERIAL .062 ALUMINUM 5052-H32	THE TECHNICAL MATERIEL CORP. MAMARONECK, NEW YORK
FINISH YEL IRIDITE PER S404	TITLE PLATE, SIDE - RIGHT

UNLESS OTHERWISE SPECIFIED DIMENSIONS ARE IN INCHES AND INCLUDE CHEMICALLY APPLIED OR PLATED FINISHES	DRAWN [Signature]	DATE 8-14-63	FINAL APPROVAL [Signature]	DATE
DECIMALS X ± .05 XX ± .01 XXX ± .005	TOLERANCES	FRACTIONS ± 1/64 ± 0° 30'	ELECT. DES. [Signature]	DATE
THE CONTENTS OF THIS DRAWING ARE THE EXCLUSIVE PROPERTY OF THE TECHNICAL MATERIEL CORP. ITS UNAUTHORIZED USE OR REPRODUCTION IN WHOLE OR IN PART IS STRICTLY FORBIDDEN.		MECH. DES. [Signature]	DATE 7-27-64	SHEET

MS-3603

NOTES

1 LFS-1
QTY./UNIT MODEL USED ON ASSY. NO.
SCALE 1:1 CODE A

MS-3603