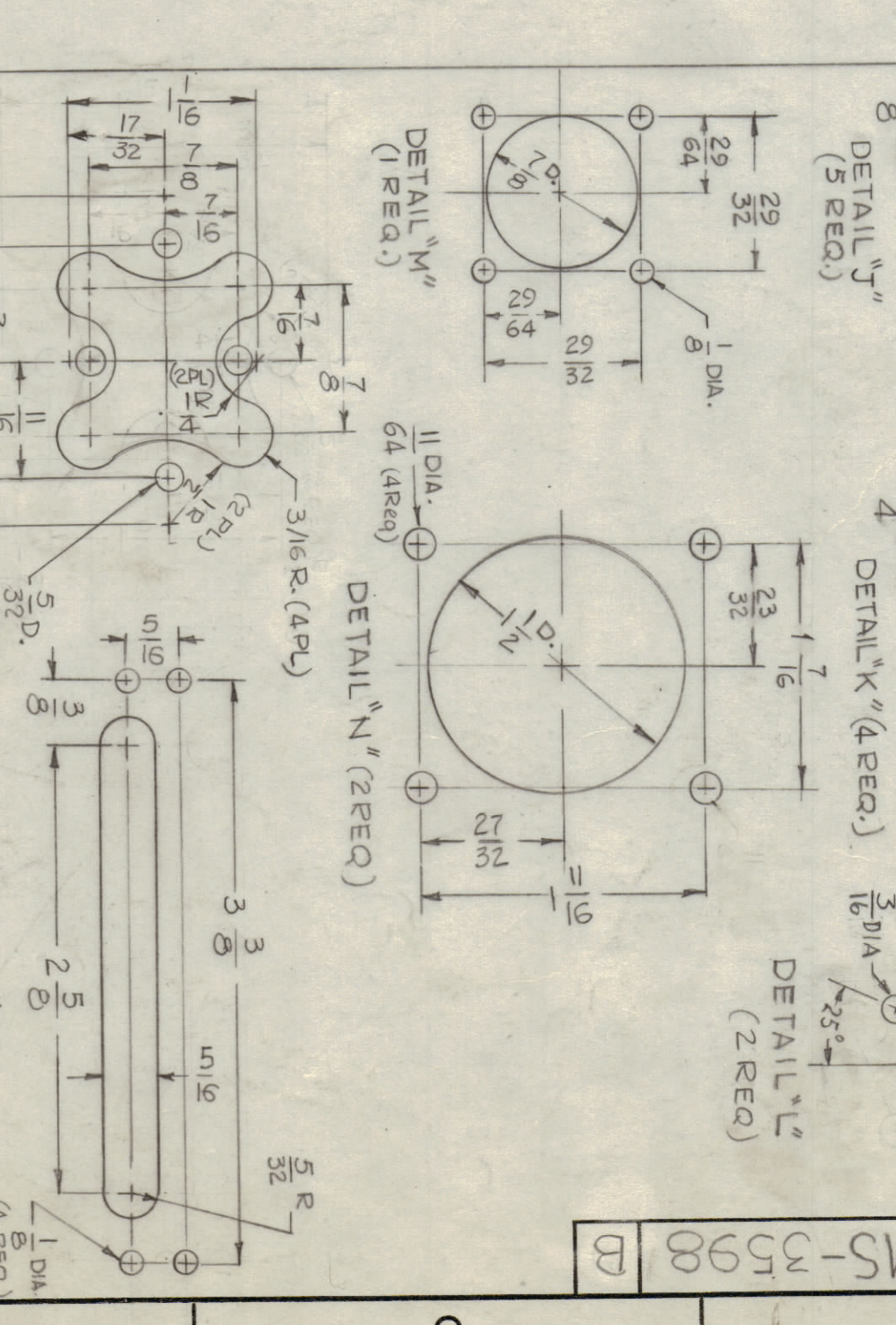


ZONE	SYM	DESCRIPTION	DATE	EMP. NO.	DRAWN	CHKD	APPD.
A		ON BUYER'S APPROVAL SET DATE OF THE TECHNICAL DRAWING AND THE EXCLUSIVE PROPERTY OF THE TECHNICAL DRAWING SHALL REMAIN IN THE ZONE OF THE TECHNICAL DRAWING IN WHOLE OR IN PART IS STRICTLY FORBIDDEN.	1/25/59	13589	MS-3598		
B		"U" HOLE 1/8 DIA WAS 1/7 DIA					

HOLE	DESCRIPTION	REQ.
A	1/8 DIA.	4
B	11/64 DIA.	18
C	13/64 DIA.	14
D	SEE DETAIL "D"	3
E	SEE DETAIL "E"	1
F	3/8 DIA.	4
G	SEE DETAIL "G"	1
H	15/32 DIA.	1
J	SEE DETAIL "J"	3
K	SEE DETAIL "K"	2
L	SEE DETAIL "L"	2
M	SEE DETAIL "M"	1
N	SEE DETAIL "N"	2
P	1/4 DIA.	1
Q	SEE DETAIL "Q"	1
R	SEE DETAIL "R"	1
S	SEE DETAIL "S"	1
T	SEE DETAIL "T"	2
U	1/4 DIA. 1/8 DIA. CS59K 82* 102 DIA	2
V	3/8 DIA. 1/4 DIA. (A9 DIA)	1
W	7/8 DIA. (A9 DIA)	1
Z	1/8 DIA. FOR ITEM # 1	2

DETAIL	DESCRIPTION	REQ.
DETAIL "A"	8 DIA.	(3 REQ.)
DETAIL "D"	8 DIA. (REQ.)	(3 REQ.)
DETAIL "J"	8 DIA. (REQ.)	(5 REQ.)
DETAIL "E"	3/16 DIA. (REQ.)	(1 REQ.)
DETAIL "G"	5/16 DIA. (REQ.)	(1 REQ.)
DETAIL "L"	1/4 DIA. (2 REQ.)	(2 REQ.)
DETAIL "M"	3/8 DIA. (REQ.)	(1 REQ.)
DETAIL "N"	1/4 DIA. (REQ.)	(2 REQ.)
DETAIL "P"	3/16 DIA. (4 REQ.)	(4 REQ.)
DETAIL "R"	5/16 DIA. (4 REQ.)	(4 REQ.)
DETAIL "S"	3/16 DIA. (4 REQ.)	(4 REQ.)
DETAIL "T"	3/16 DIA. (2 REQ.)	(2 REQ.)

LIST OF MATERIAL	DESCRIPTION	QUANTITY
1	NUT, SWAGE, ROUND TYPE	4
2	MS-3598-1	1



NOTES

REF - LD - 1415

MS-3598-1

MOUNT AS SHOWN IN 'Z' HOLES AFTER FINISHING

REF - LD - 1415

MS-3598

MS-3598