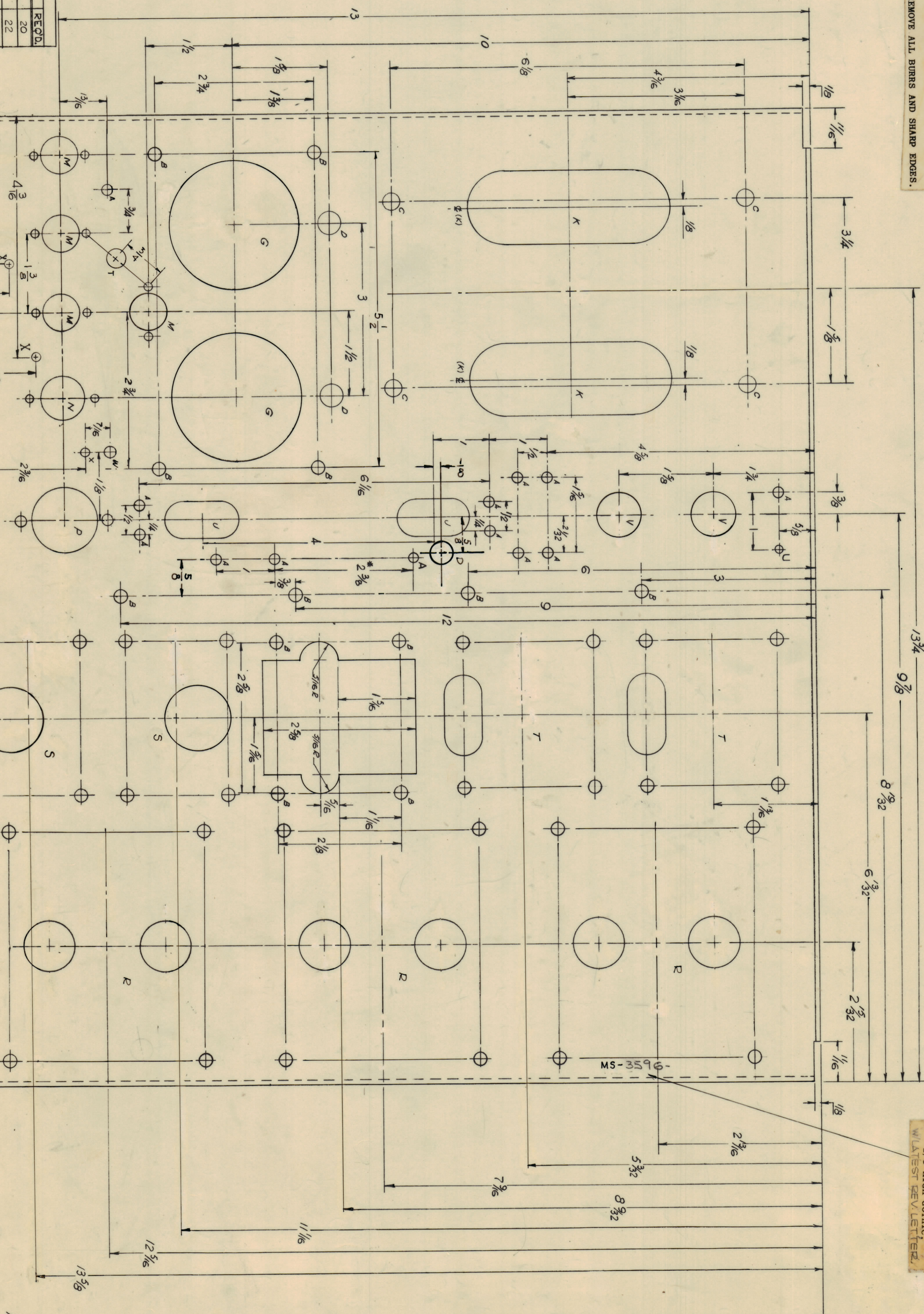
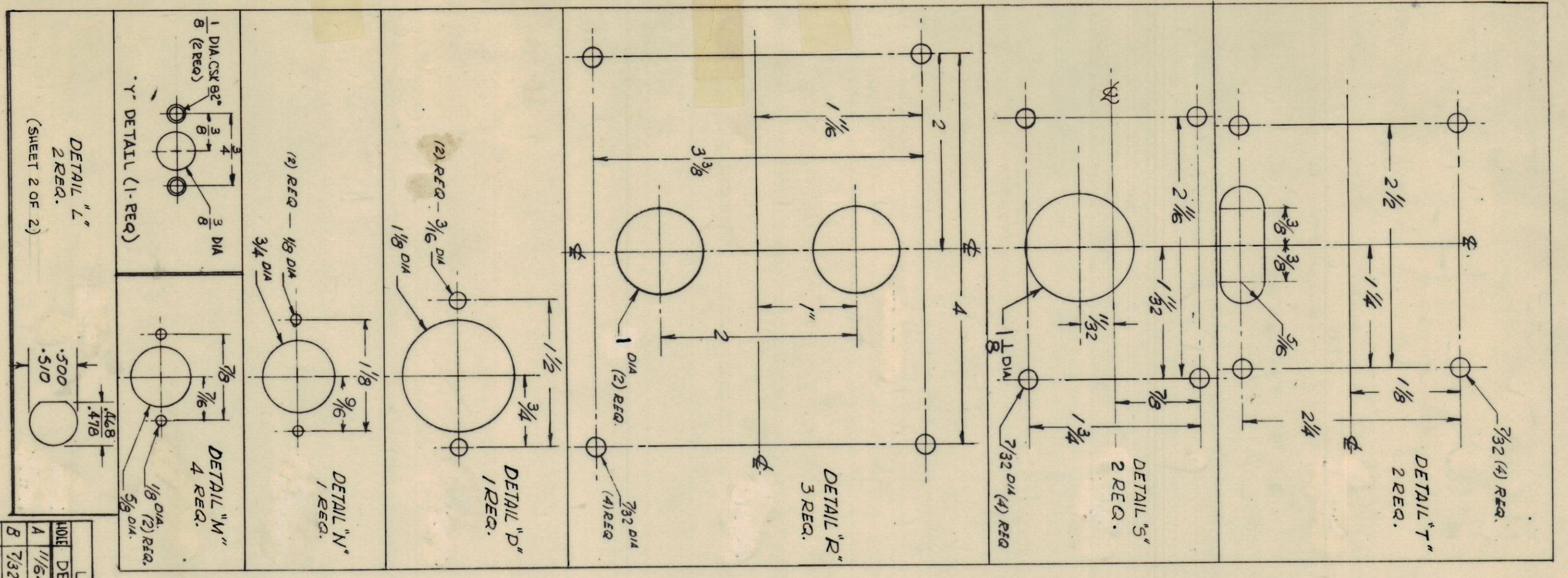


IF IT IS FOUND NECESSARY TO CHANGE ANY TOLERANCE OR OTHER DETAIL SPECIFIED ON THIS DRAWING NOTIFY THE PURCHASER PROMPTLY.
 MAXIMUM ALLOWABLE TOLERANCES HAVE BEEN SET ON THIS DRAWING.
 MINOR TOLERANCES MAY BE OBTAINED BY THE PURCHASER.
 REMOVE ALL BURRS AND SHARP EDGES.

UNLESS OTHERWISE SPECIFIED:
 1. USE MATERIAL THICKNESS FOR MAXIMUM RADII ON ALL BENDS.
 2. ALL ANGULAR BENDS 90°.
 3. REMOVE ALL BURRS AND SHARP EDGES.



REV	DESCRIPTION	DATE	BY	CHK
1	REVISED FROM	11/3/61	W.D.	W.D.
2	CHANGED FROM	4-14-64	W.D.	W.D.

NO.	DESCRIPTION	REQD.
A	1/16" DIA	20
B	7/32" DIA	22
C	9/32" DIA	4
D	3/8" DIA	3
E	3/32" DIA	1
F	1/8" DIA	1
G	3/4" DIA	2
H	1/16" x 3/32" SLOT	11
I	1/4" x 3/2" SLOT	2
J	1/8" DIA.	4
K	3/4" DIA.	2
L	3/16" DIA.	2
M	5/8" DIA.	2
N	5/16" DIA.	2
O	5/8" x 1-1/4" SLOT	2
P	5/16" DIA.	1

LEGEND

NOTE FOR LEFT & RIGHT SIDE VIEWS SEE SHEET 2.

1/6 31/32

13 1/2

REF. NO.	1408
SYMBOL	
DESCRIPTION	R. HART TMC (Yeaman) LIMITED OTTAWA ONTARIO
MATERIAL	ALUMINIUM
WEIGHT PER PC.	5032-H-32
TYP. & TOLER.	
HEAT TREAT. SPEC.	5404 REV'DITE 14-2 AL 047
DATE	10-8-63
PROJECT NO.	E 3105
MODEL	PSP-3504
USED ON	
ASBY NO.	
DATE	
FRONT & REAR NO.	
SHEET	1 OF 2
MS-3596	B

METAL STAMP TMC PART NO. 1/8 HIGH GOTHIC, WILKES REV' LETTER

MS-3596 B