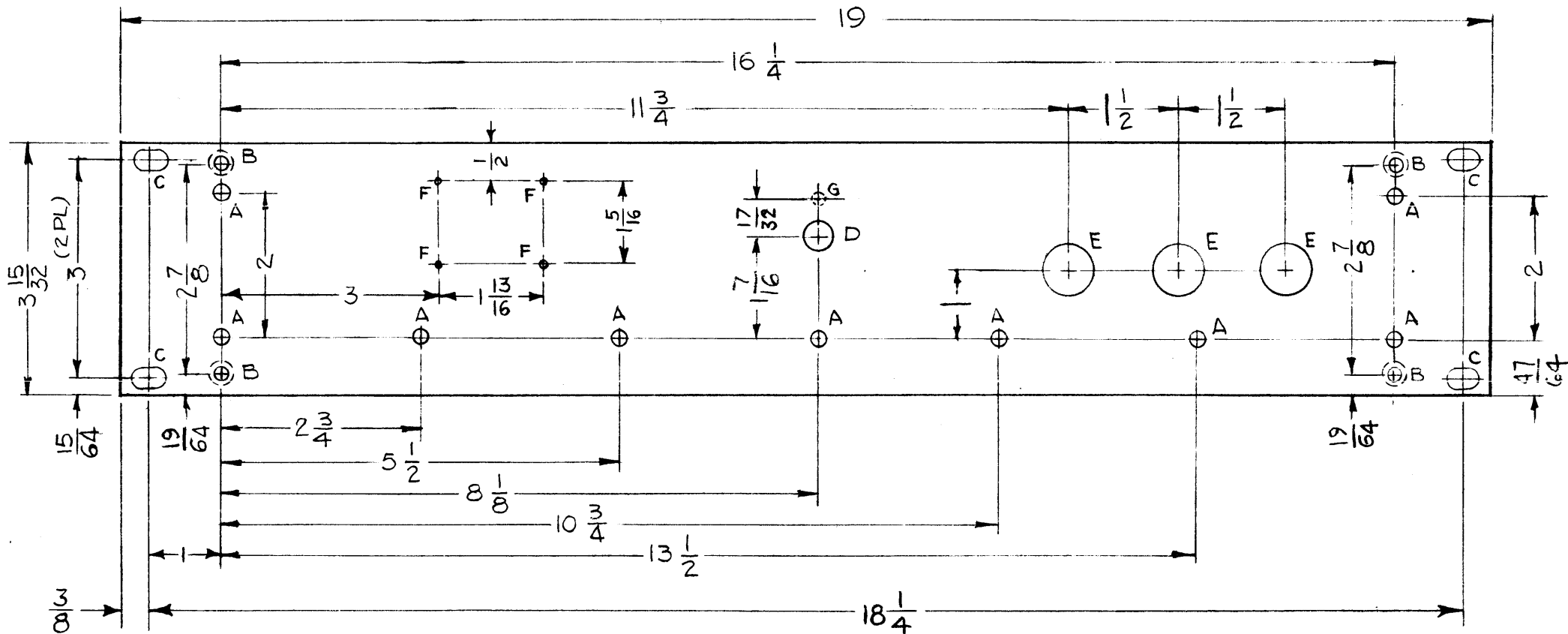


MS-3594 0

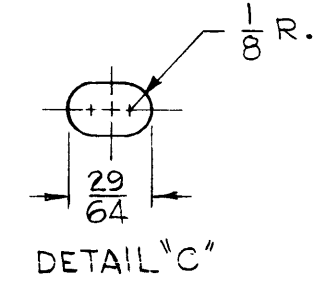
REVISIONS

SYM	DESCRIPTION	DATE	E.M.N. NO.	DRAFT	CHKD	APPD
X1	.196 X .390 CSK WAS .144 X .284, ADDED "G" HOLE (12/11/62)	4/2/63		T.R.		
0	ORIGINAL RELEASE FOR PRODUCTION	4/13/64	HT	A.M.	@	



METAL STAMP TMC PART NO. 1/8 HIGH GOTHIC ON REAR OF PANEL

HOLE	DESCRIPTION	REQ'D
A	11/64 DIA.	9
B	.196 DIA. C/SINK 82° TO .390 DIA.	4
C	SEE DETAIL	4
D	3/8 DIA.	1
E	11/16 DIA.	3
F	.070 DIA	4
G	5/32 DIA, 1/8 DP ON REAR	1



FRONT VIEW SHOWN

MACHINING:

1. MILL ALL EDGES.
2. HOLES MUST BE DRILLED, UNLESS OTHERWISE SPECIFIED.
3. LATERAL BOW OF PANEL MUST BE KEPT TO .031 TOLERANCE.
4. PANEL MUST BE FREE OF ALL MACHINING MARKS, GOUGES AND SCRATCHES. IF NECESSARY, SAND FRONT OF PANEL WITH NO. 120 GRIT SANDPAPER.

FINISH NOTES:

1. S404 - IRIDITE 14-2 AL-COAT.
2. S114 - ZINC CHROMATE PRIMER) FRONT AND
3. S115 - SMOOTH GRAY ENAMEL) EDGES ONLY

NOTES

1	MCG-1	
Q'TY./UNIT	MODEL USED ON	ASS'Y. NO.
SCALE 1:2	CODE A	

THE CONTENTS OF THIS DRAWING ARE THE EXCLUSIVE PROPERTY OF THE TECHNICAL MATERIEL CORP. ITS UNAUTHORIZED USE OR REPRODUCTION IN WHOLE OR IN PART IS STRICTLY FORBIDDEN.

REF: LD-1406

REQ'D.	ITEM	PART NUMBER	DESCRIPTION	SYMBOL
AALTONEN LIST OF MATERIAL				
MATERIAL 3/16 ALUMINUM 2024-T4			THE TECHNICAL MATERIEL CORP. MAMARONECK, NEW YORK	
FINISH SEE NOTE			TITLE PANEL, FRONT MACHINING	
UNLESS OTHERWISE SPECIFIED DIMENSIONS ARE IN INCHES AND INCLUDE CHEMICALLY APPLIED OR PLATED FINISHES				
DRAWN G.D.L	DATE 8-29-63	FINAL APPROVAL		DATE 4/22/64
CHECKED <i>a Turner</i>	DATE 1-29-64			
ELECT. DES. <i>1 RL</i>	DATE 1/29/64	MS-3594		0
MECH. DES. <i>M. Zetina</i>	DATE 1-31-64	SHEET		REV. LTR.