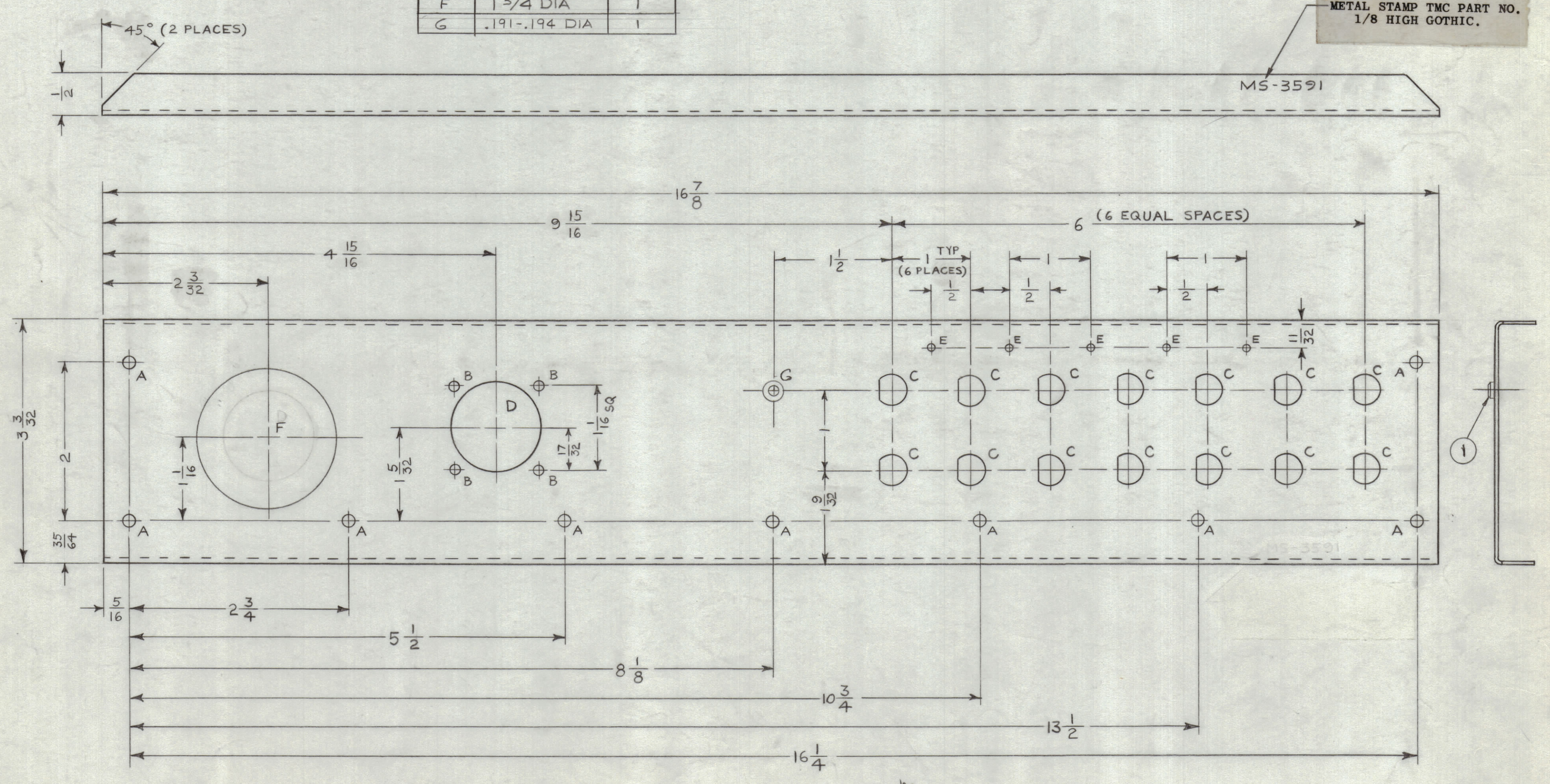


REVISIONS							
ZONE	SYM	DESCRIPTION	DATE	E.M.N. NO.	DRAFT	CHKD	APPD
0		RELEASED FOR PRODUCTION	2/29/64	-	AM	Ⓢ	

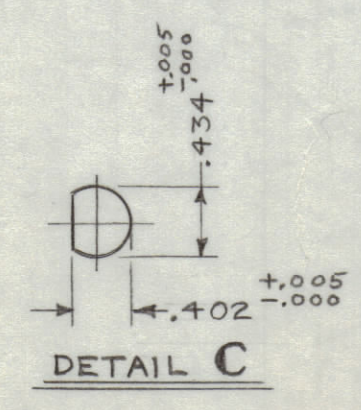
LEGEND		
HOLE	DESCRIPTION	REQD
A	11/64 DIA	9
B	.129 DIA	4
C	SEE DETAIL	14
D	11/16 DIA	1
E	9/64 DIA	5
F	1 3/4 DIA	1
G	.191-.194 DIA	1

METAL STAMP TMC PART NO.  
1/8 HIGH GOTHIC.



UNLESS OTHERWISE SPECIFIED:

1. USE MATERIAL THICKNESS FOR MAXIMUM RADIUS ON ALL BENDS.
2. ALL ANGULAR BENDS 90°.
3. REMOVE ALL BURRS AND SHARP EDGES.
4. MOUNT INSERTS AFTER FINISHING.



REF: LD-1413

REQ'D	ITEM	PART NUMBER	DESCRIPTION	SYMBOL
1	1	NT-129-632-4	NUT, ROUND, SWAGE TYPE	G

AALTONEN		LIST OF MATERIAL	
MATERIAL	.064 ALUMINUM 5052-H32	THE TECHNICAL MATERIEL CORP. MAMARONECK, NEW YORK	
FINISH	S404 -IRIDITE H 2 AL COAT	TITLE PANEL, REAR	

SCALE	CODE	ASS'Y. NO.	DATE	DATE
1:1	A		10/30/63	4/20/64

UNLESS OTHERWISE SPECIFIED		DIMENSIONS ARE IN INCHES AND INCLUDE CHEMICALLY APPLIED OR PLATED FINISHES	
DECIMALS	FRACTIONS	ANGLES	TOLERANCES
.X ± .05	± 1/64	± 0° 30'	
.XX ± .01			
.XXX ± .005			

DRAWN	CHECKED	ELECT. DES.	MECH. DES.	DATE	DATE	DATE	DATE
<i>M. Patten</i>	<i>G. Turai</i>	<i>JRC</i>	<i>M. Patten</i>	2-17-64	2-17-64	2-17-64	2-17-64

FINAL APPROVAL	DATE	REV. LTR.
<i>RDC</i>	MS-3591	0

NOTES

THE CONTENTS OF THIS DRAWING ARE THE EXCLUSIVE PROPERTY OF THE TECHNICAL MATERIEL CORP. ITS UNAUTHORIZED USE OR REPRODUCTION IN WHOLE OR IN PART IS STRICTLY FORBIDDEN.

MS-3591  
0