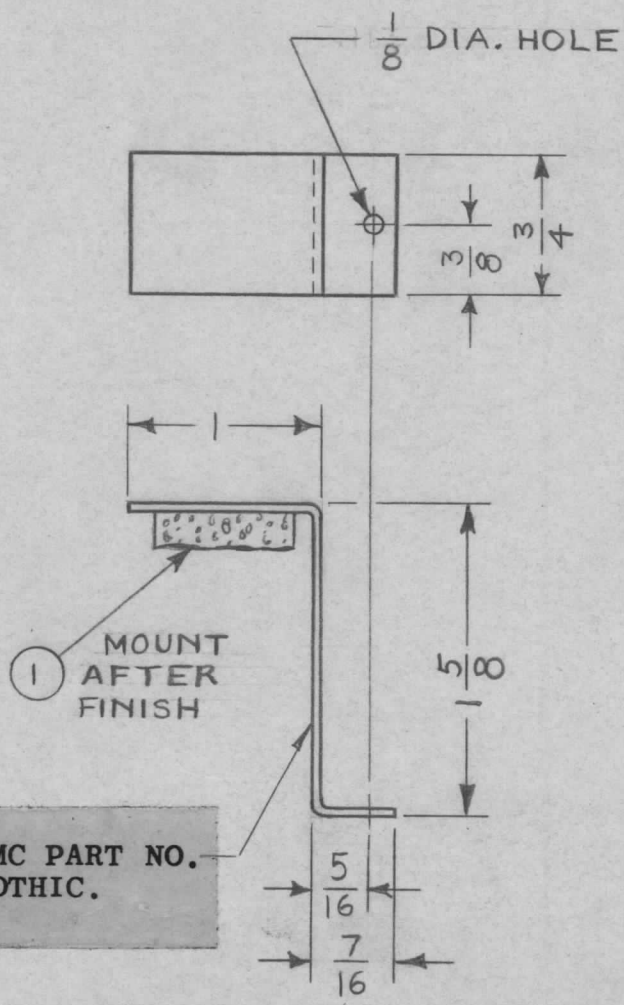


REQ. PER UNIT	USED ON			MS-3588 ○
	MODEL	ASS'Y. NO.	DATE	
2	MCG-1		11-20-63	



UNLESS OTHERWISE SPECIFIED:

1. USE MATERIAL THICKNESS FOR MAXIMUM RADIUS ON ALL BENDS.
2. ALL ANGULAR BENDS 90°.
3. REMOVE ALL BURRS AND SHARP EDGES.

METAL STAMP TMC PART NO. 1/8 HIGH GOTHIC.

1	1	TA-III-2-6-75-A	TAPE, URETHANE		
REQ. ITEM	PART NO.		AALTONEN DESCRIPTION		SYMBOL
	.062 THICK		THE TECHNICAL MATERIEL CORP.		
	STOCK SIZE		MAMARONECK, NEW YORK		
0	ORIGINAL RELEASE FOR PRODUCTION		BRACKET, OVEN		
SYM	DESCRIPTION	DATE	CH. NO.	DRAFTS	CHECKER
		4/13/64	#	AM	@
UNLESS OTHERWISE SPECIFIED DIMENSIONS ARE IN INCHES AND INCLUDE CHEMICALLY APPLIED OR PLATED FINISHES		SCALE			
		1:1			
DECIMALS	FRACTIONS	CODE	5052-H32	—H—	N. Peter
.X ± .05	± 1/64	A	TYPE & TEMPER	HEAT TREAT. SPEC.	1-29-64
.XX ± .01	ANGLES		YEL IRIDITE 14-2		RDL
.XXX ± .005	± 0° 30'		AL COAT		
TOLERANCES			FINISH & SPEC. NO.	ELEC. DES. APP.	MECH. DES. APP.
					MS-3588 ○