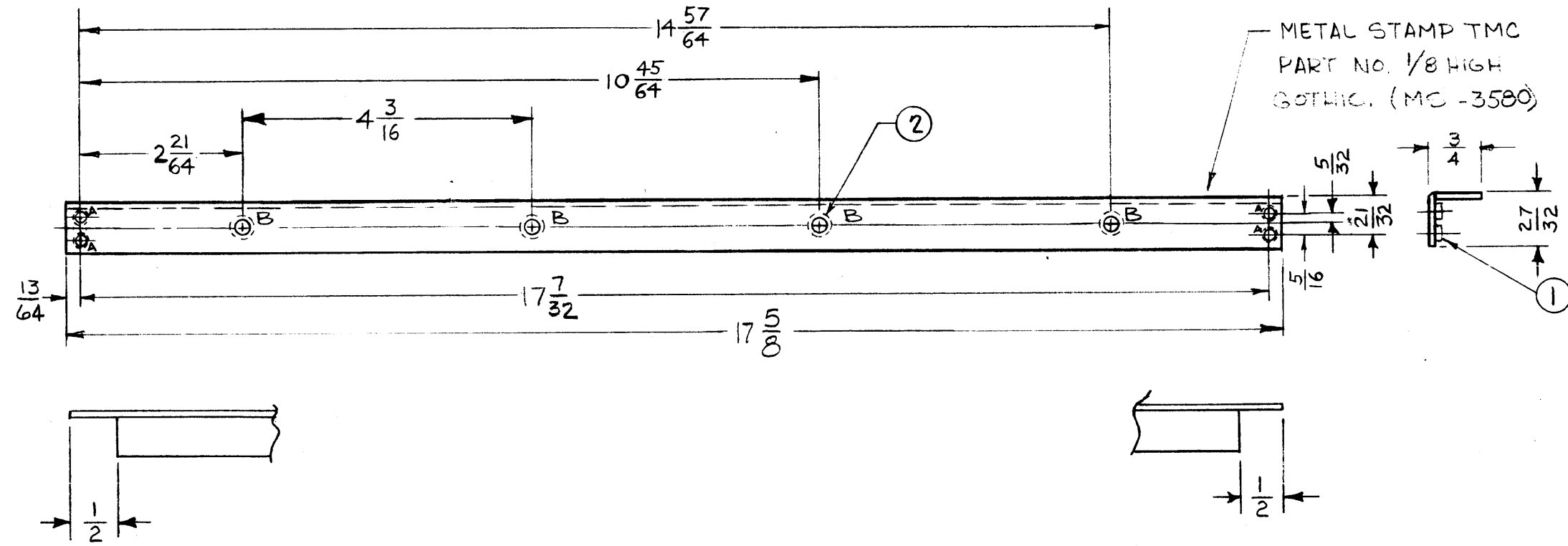


MS-3580

REVISIONS

SYM	DESCRIPTION	DATE	E.M.N. NO.	DRAFT	CHKD	APPD

LEGEND		
HOLE	DESCRIPTION	REQ
A	.161-.164 DIA.	4
B	.221-.224 DIA	4



UNLESS OTHERWISE SPECIFIED:

1. USE MATERIAL THICKNESS FOR MAXIMUM RADIUS ON ALL BENDS.
2. ALL ANGULAR BENDS 90°.
3. REMOVE ALL BURRS AND SHARP EDGES.
4. MOUNT INSERTS AFTER FINISHING.

NOTES

1	MNF-1	
Q'TY./UNIT	MODEL USED ON	ASS'Y. NO.
SCALE 1:2	CODE A	
THE CONTENTS OF THIS DRAWING ARE THE EXCLUSIVE PROPERTY OF THE TECHNICAL MATERIEL CORP. ITS UNAUTHORIZED USE OR REPRODUCTION IN WHOLE OR IN PART IS STRICTLY FORBIDDEN.		

REQ'D.	ITEM	PART NUMBER	DESCRIPTION	SYMBOL
4	2	NT-129-8-32-4	NUT, ROUND, SWAGE TYPE	B
4	1	NT-129-4-40-4	NUT, ROUND, SWAGE TYPE	A

AALTONEN		LIST OF MATERIAL	
MATERIAL .080 THK. ALUM. 5052 H32		THE TECHNICAL MATERIEL CORP. MAMARONECK, NEW YORK	
FINISH S404-IRIDITE 14-2 AL-COAT		TITLE SUPPORT, MOUNTING, MODULE	
UNLESS OTHERWISE SPECIFIED DIMENSIONS ARE IN INCHES AND INCLUDE CHEMICALLY APPLIED OR PLATED FINISHES		DRAWN <i>Ge Sencer</i>	DATE 5-10-63
DECIMALS .X ± .05 .XX ± .01 .XXX ± .005		CHECKED <i>A. Tami</i>	DATE 1-9-64
FRACTIONS ± 1/64 ANGLES ± 0° 30'		ELECT. DES. <i>TMC</i>	DATE 1/21/64
TOLERANCES		MECH. DES. <i>M. J. ...</i>	DATE 1-9-64
		FINAL APPROVAL <i>R. ...</i>	
		DATE 2/11/64	
		MS-3580	
		SHEET	
		REV. LTR.	