

THE CONTENTS OF THIS DRAWING ARE THE EXCLUSIVE PROPERTY OF THE TECHNICAL MATERIEL CORP. ITS UNAUTHORIZED USE FOR REPRODUCTION IN WHOLE OR IN PART IS STRICTLY FORBIDDEN.

REQ. PER UNIT

USED ON

MODEL

ASS'Y. NO.

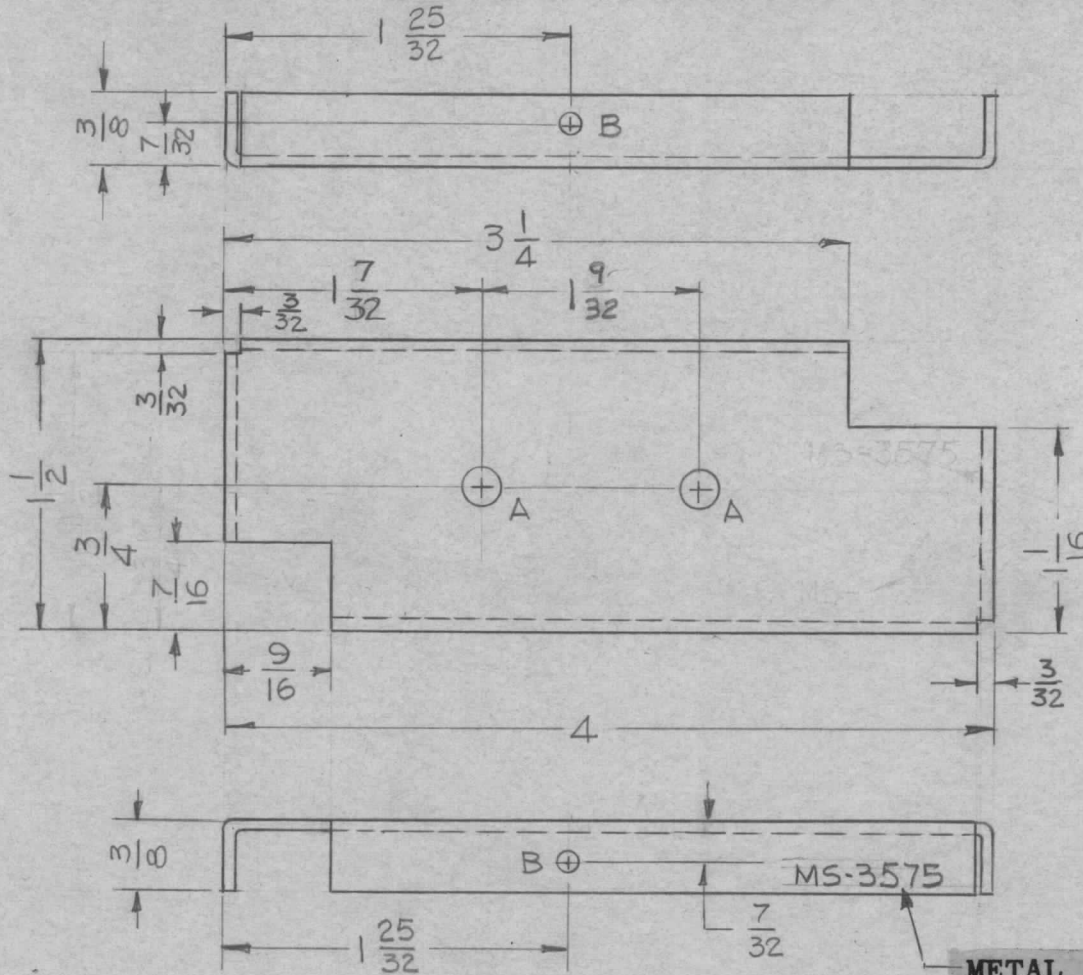
DATE

MS-3575

1

MNF-1

6-29-63



HOLE	DESCRIPTION	REQ'D
A	3/16 DIA.	2
B	3/32 DIA.	2

METAL STAMP TMC PART NO. 1/8 HIGH, GOTHIC

UNLESS OTHERWISE SPECIFIED:

1. USE MATERIAL THICKNESS FOR MAXIMUM RADIUS ON ALL BENDS.
2. ALL ANGULAR BENDS 90°.
3. REMOVE ALL BURRS AND SHARP EDGES.

METAL STAMP TMC PART NO. 1/8 HIGH, GOTHIC.

SYM	DESCRIPTION	DATE	CH. NO.	DRAFTS	CHECKER	ENG. APP.	REQ. ITEM	PART NO.	AALTONEN DESCRIPTION	SYMBOL
							1/16 THK		THE TECHNICAL MATERIEL CORP. MAMARONECK, NEW YORK	
							STOCK SIZE			
							ALUMINUM		BRACKET, ELECTRICAL SHIELD	
							MATERIAL		FILTER	
							5052-H32	-H-	G.D.L. @ 1-7-64	2/21/64
							TYPE & TEMPER	HEAT TREAT. SPEC.	DRAWN	CHECKED
							5404 IRIDITE (YELLOW)			
							FINISH & SPEC. NO.	ELEC. DES. APP.	MECH. DES. APP.	MS-3575

UNLESS OTHERWISE SPECIFIED DIMENSIONS ARE IN INCHES AND INCLUDE CHEMICALLY APPLIED OR PLATED FINISHES

SCALE 1:1

DECIMALS .X ± .05 .XX ± .01 .XXX ± .005

FRACTIONS ± 1/64 ANGLES ± 0° 30'

TOLERANCES

CODE A