

THE CONTENTS OF THIS DRAWING ARE THE EXCLUSIVE PROPERTY OF THE TECHNICAL MATERIEL CORP. ITS UNAUTHORIZED USE FOR REPRODUCTION IN WHOLE OR IN PART IS STRICTLY FORBIDDEN.

REQ. PER UNIT

USED ON

MODEL

ASS'Y. NO.

DATE

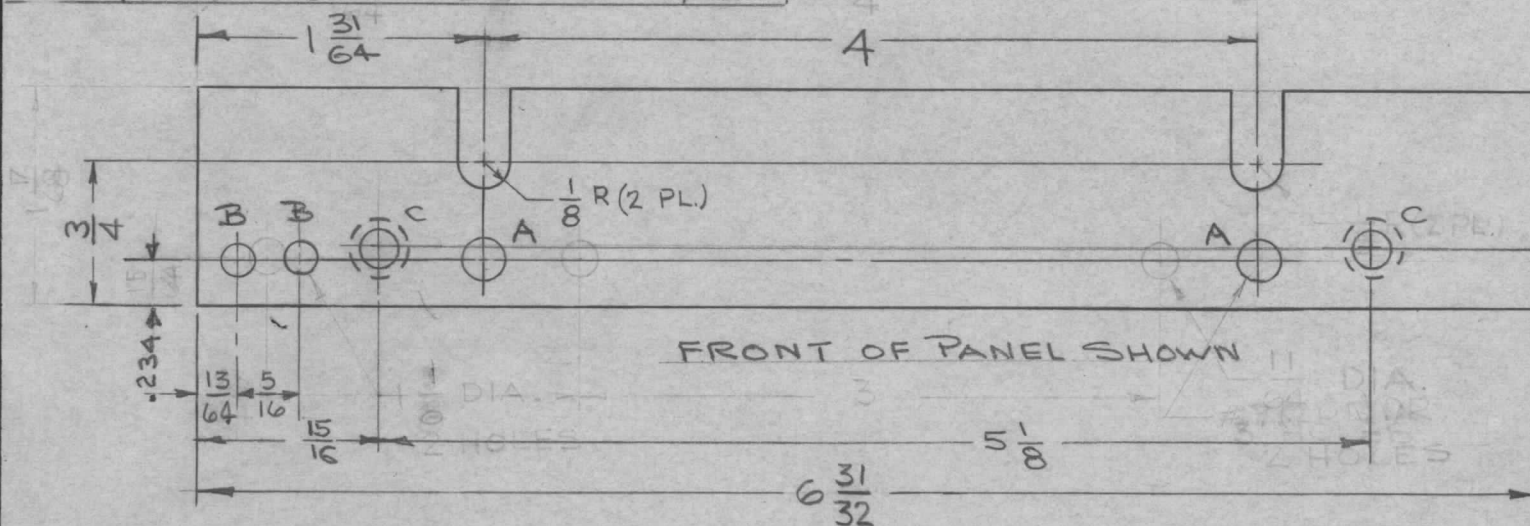
1

MNF-1

6-12-63

MS-3574

SYM	HOLE DESCRIPTION	REQ
A	.201 DIA	2
B	1/8 DIA	2
C	.196 DIA. CSK 82° TO .390 DIA.	2



NOTE: CSNK ON REAR OF PANEL

FINISH NOTE:

1. S404 - YEL. IRIDITE ALL OVER
2. S114 - ZINC CHROMATE PRIMER } ON FRONT
3. S115 - SMOOTH GRAY, ENAMEL } & EDGES ONLY

MS-3574

METAL STAMP TMC PART NO. 1/8 HIGH GOTHIC.

REMOVE ALL BURRS AND SHARP EDGES.

SYM	DESCRIPTION	DATE	CH. NO.	DRAFTS	CHECKER	ENG. APP.	REQ. ITEM	PART NO.	AALTONEN	DESCRIPTION	SYMBOL
							3/16 THK			THE TECHNICAL MATERIEL CORP.	
							STOCK SIZE			MAMARONECK.	
							ALUMINUM			NEW YORK	
										PANEL, FRONT END	
										RIGHT HAND	
							2024-T3		T. RAMIREZ	12/21/63	RWC 2/21/64
							TYPE & TEMPER	HEAT TREAT. SPEC.	DRAWN	CHECKED	FINAL APPROVAL
							SEE NOTE				MS-3574
							FINISH & SPEC. NO.		ELEC. DES. APP.	MECH. DES. APP.	