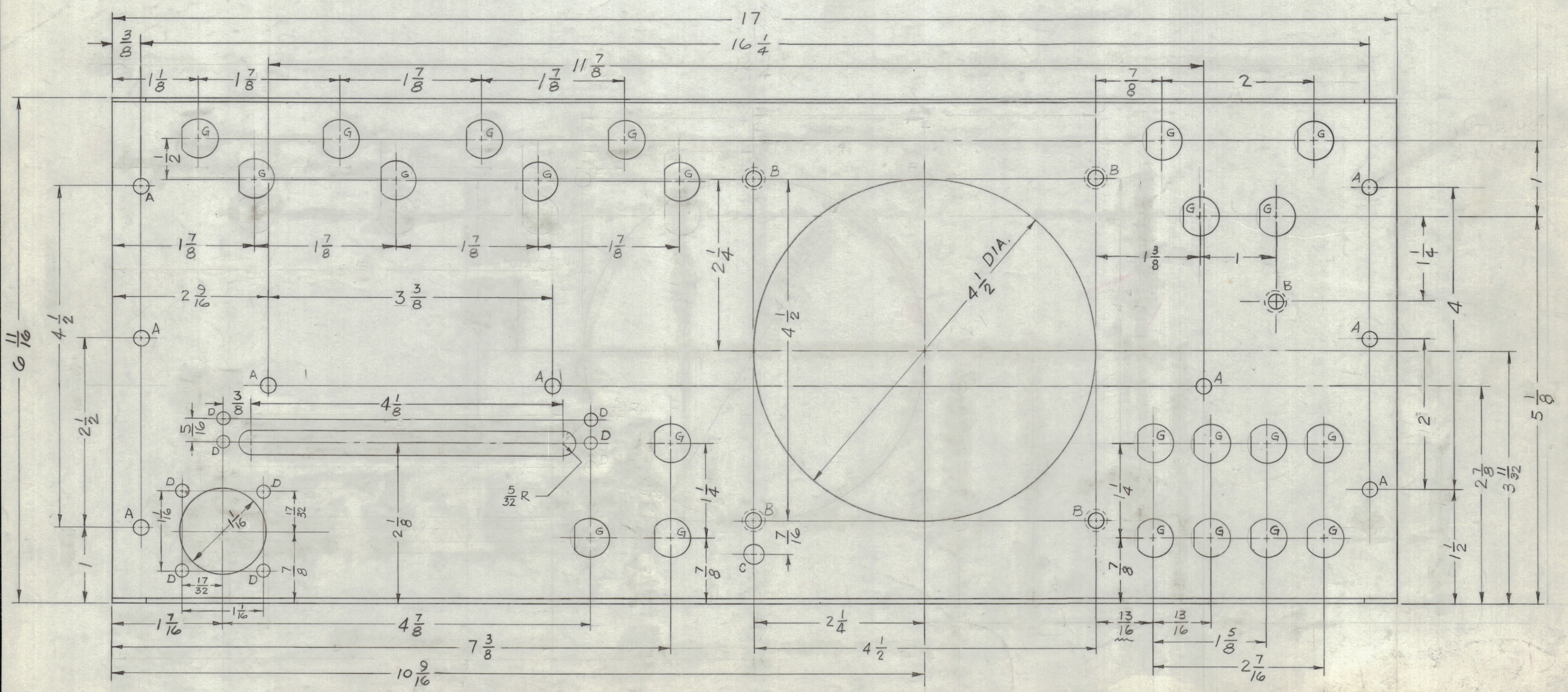
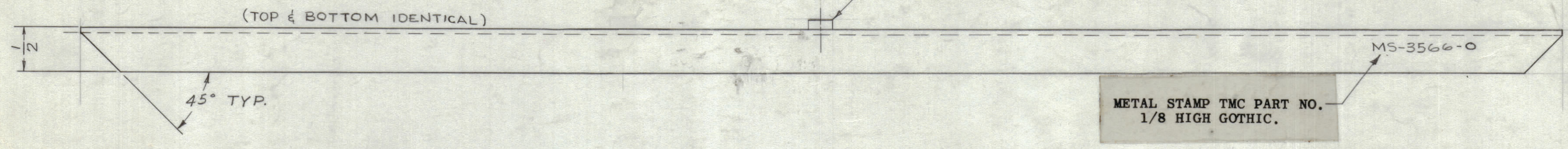


REVISIONS							
ZONE	SYM	DESCRIPTION	DATE	E.M.N. NO.	DRAFT	CHKD	APPD
B-6	X1	10 7/8 WAS 10 3/4	11/8/63		TR.		TSC
	X2	10 7/16 WAS 10 7/8. 15/16 WAS 7/8	11/11/63		TR.		TSC
D-6	X3	2 1/8 WAS 2 1/4. INVERTED TERM. STRIP MOUNTING	12/5/63		TR.		TSC
	0	ORIGINAL RELEASE FOR PRODUCTION	4-20-64	0	A.M.	@	



MS-3566-0

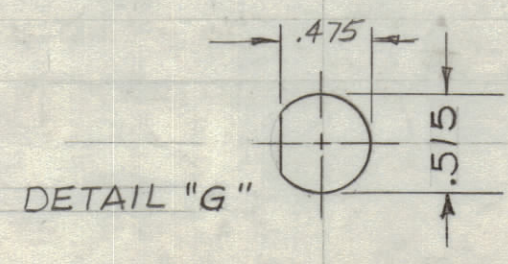
REF: LD-1435

5	1	NT-129-632-4	NUT, ROUND, SWAGE TYPE	B
REQ'D.	ITEM	PART NUMBER	DESCRIPTION	SYMBOL
AALTONEN LIST OF MATERIAL				
MATERIAL			THE TECHNICAL MATERIEL CORP.	
.064 ALUMINUM			MAMARONECK, NEW YORK	
5052 H 32			TITLE	
FINISH			PLATE, REAR	
5404 YEL. IRIDITE			DRAWN	
UNLESS OTHERWISE SPECIFIED			T. RAMIREZ	
DIMENSIONS ARE IN INCHES AND INCLUDE			DATE	
CHEMICALLY APPLIED OR PLATED FINISHES			3-1-64	
ELECT. DES.			DATE	
7/26			12/6/63	
MECH. DES.			DATE	
3/26			5-11-69	
DECIMALS			SHEET	
.X ± .05			MS-3566-0	
.XX ± .01			REV. LTR.	
.XXX ± .005				
FRACTIONS				
± 1/64				
ANGLES				
± 0° 30'				

LEGEND

HOLE	DESCRIPTION	REQ'D
A	3/16 DIA	9
B	.194-.191 DIA.	5
C	1/4 DIA.	1
D	11/64 DIA.	8
G	SEE DETAIL	23

- UNLESS OTHERWISE SPECIFIED:
1. USE MATERIAL THICKNESS FOR MAXIMUM RADIUS ON ALL BENDS.
 2. ALL ANGULAR BENDS 90°.
 3. REMOVE ALL BURRS AND SHARP EDGES.
 4. MOUNT INSERTS AFTER FINISHING.



1	MSA-1	A-3402.
Q'TY./UNIT	MODEL USED ON	ASS'Y. NO.
SCALE	CODE	
1:1	A	

THE CONTENTS OF THIS DRAWING ARE THE EXCLUSIVE PROPERTY OF THE TECHNICAL MATERIEL CORP. ITS UNAUTHORIZED USE OR REPRODUCTION IN WHOLE OR IN PART IS STRICTLY FORBIDDEN.

NOTES